

out about town

responsibility outside of the "higher" power 12-step programs. (7:30 pm, Thursdays, 415 SW 13th Ave., 241-9268.)

Co-Dependents Anonymous for Gay Men and Lesbians meets weekly. (7:30 pm, Sundays, Live and Let Live Club, 2804 SE Ankeny St., Portland, 97214, 231-3760.)

Facilitated group for lesbians working on issues of abstinence from drugs, alcohol, relationships and more. Sliding scale. (Call for details, 242-1456.)

Gay Men's Adult Children of Alcoholics. (7:30-9 pm, Tuesdays, Live and Let Live Club, 2804 SE Ankeny St., Portland, 97214, 231-3760.)

Gay men's non-smoking AA group. Emphasis on recovery. (10 am, Sundays, Sixth Floor, Good Samaritan Hospital, 1015 NW 22nd Ave.)

Lavender Lesbian NA Meeting with child care available. (7 pm, Mondays, 12-Step Haven, Small Group Room, 4160 SE Division St.)

Lesbians with Depression is a support and validation group for lesbians who find it difficult to hold a job due to depressive disorders. Join us for discussion groups and more. (771-0348 or 236-8850.)

Madwomyn is a non-political peer-support group for lesbians and bisexual women with mental and emotional health issues. Meets second and fourth Wednesdays in Vancouver, Wash. (All calls are returned, 206-750-4707.)

McMinnville Lesbian and Gay Support Group understands that people strive to be whole human beings and addresses spiritual, sexual, political and interpersonal issues. Lesbians, gay men, people living with HIV/AIDS and their families and allies are welcome. Meets second and fourth Mondays at the First Baptist Church. (7:30 pm, call Pastor Mary Beth, 472-7941.)

Meridian Psychotherapy Associates is currently offering the following support groups: lesbian partners of survivors of childhood sexual trauma; women's therapy; exploring women's relationships; gay men recreating relationships; male sexual abuse; and play therapy for children with absent fathers. (Suite 106, 1331 SW Broadway, 274-2206.)

New Beginning Sex Addicts Anonymous group meets Tuesdays at the HIV Day Center. (7:30 pm, 3835 SW Kelly St., 223-3444.)

Portland Area Lesbian and Gay 12-Step Program. Call for calendar and meeting times. (Live and Let Live Club, 2304 SE Ankeny St., Portland, 97214, 231-3760.)

Sex and Love Addicts Anonymous. The only requirement for membership is a desire to stop living out a pattern of sex and love addiction. (650-7009.)

A **Therapy Group for Gay Men** is intended to provide gay men with a means of understanding themselves through the process of interacting with others. The ongoing group will be facilitated by therapists John Cardinali and Tony DuBose. (6:30 pm, Wednesdays, Pacific University Psychological Service Center, Suite 400, 511 SW 10th Ave., sliding scale, call for details, 220-0390.)

Triangle Project is gay-specific individual and group counseling for alcohol and drug problems, available through ASAP Treatment Services, Inc. Sliding scale treatment is offered regardless of ability to pay. When calling the Intake Coordinator please specify Triangle Project. (2130 SW 5th Ave., 224-0075.)

Women of all ages who have experienced sexual abuse are invited to take part in a **Womens' Therapy Group for Survivors of Sexual Abuse**. The ongoing group will be facilitated by Sue Chenoweth, BA and Tana Paget, MSW with group supervision by Donald Fromme, PhD. Group is limited to 8 participants. (6:30 pm, Tuesdays, Pacific University Psychological Center, Suite 400, 511 SW 10th Ave., sliding scale, call for details, 220-0390.)

SOCIAL

Ample Opportunities organizes many activities for large women. (245-1524.)

Bad Girls. Portland's newest women's SM group is available to all women interested in exploring the deeper part of their psyches. All levels of experience welcome. A social and educational group. (Bad Girls, c/o NLA, PO Box 5161, Portland, OR 97208.)

Cascade AIDS Project offers the monthly Plus Club Social Hour for people with HIV/AIDS to meet each other in a social setting the first Friday of every month. (5-8 pm, Hobo's Lounge, 120 NW 3rd Ave., Graham or Dan, 223-5907.)

Cascade Bears is looking for new members. (Suite 125, 1101 SW Washington St., Portland, OR 97205, Bear Line, 323-6071.)

Cascade Guild—Health Care Chapter is a networking group for gay and lesbian medical, social and mental health workers that meets monthly. (Ted., 232-1655; Debbie 206-892-1426 or Chris, 297-4314.)

Chaps is an organization devoted to teaching men new to the leather community the tenets of safe, sane and consensual S/M. Learn the how-tos from more experienced players. (Send name, address and a brief statement of interest to: Chaps, PO Box 5161, Portland, OR 97208.)

Columbia Gorge Social Group is for gays and lesbians of all ages. Activities include potlucks, outdoor activities and recreational functions. Meetings are twice a month, and support group discussions are weekly. (Jon, 296-5700.)

Dykes with Tykes is an informal social networking group for lesbians with preschoolers and children in primary grades. (246-8555.)

Forest Grove GLUE (Gays and Lesbians United for Enrichment) is a support group giving lesbians, gay men, bisexuals, their families and friends a safe and discreet place to meet and socialize. Meets the first and third Mondays of each month. Coffee and snacks served. (7:30 pm, call Maureen, 985-3593.)

Funny Ladies Afternoon Tea and Posey Society offers monthly get-togethers for all lesbian singles and couples 35 and over. (232-9714.)

Gay and Lesbian Mahjong Club meets several times a month to play mahjong and socialize. We are always looking for new players—singles, pairs, groups—beginners or advanced. (Call Paul for details, 693-0963.)

Gay and lesbian writers are invited to join a new writer's group. Come for encouragement, criticism, marketing advice, support and fun. (Call for details, 282-7928.)

Gentle Giants of Oregon is a social club for fat gay men and their admirers. (Write Jim, c/o Gentle Giants of Oregon, PO Box 412, Wilsonville, OR 97070.)

High Tech Gays is a social, support and networking group for gays and lesbians employed in high-tech companies. Confidentiality assured. (Bill, 274-7017, ext. 1500.)

K-9 Club. Join kindred folks and their dogs on the first and third Sunday of the month to walk, talk and enjoy each other's company in Portland area parks. (285-2986.)

Lesbian Activity and Social Group forming. Meet new people. Sunday afternoons/evenings. (Call 232-4820.)

Lesbian Garden Club gets together to visit interesting gardens and nurseries, exchange seeds and plants and help one another in their own gardens. (Sandi, 761-3979.)

Lesbian Mothers and Children is a social, networking and support group for lesbians who have children, who want to have children and who want to be around children. Meetings are the third Sunday of the month. Bring goodies. (2-4 pm, call Autumn, 777-7980.)

Lesbian Poetry Group. "If Wishes Were Horses..." meets on the first and third Fridays of every month. (Pam, 282-8412.)

Lesbian Psychotherapist Study Group meets every third Sunday for discussion of feminist psychoanalytic theory. (Sky, 238-0655.)

Lesbian Support Group for women 50 and over meets the third Saturday of every month. (7-10 pm, Mary, 281-4424.)

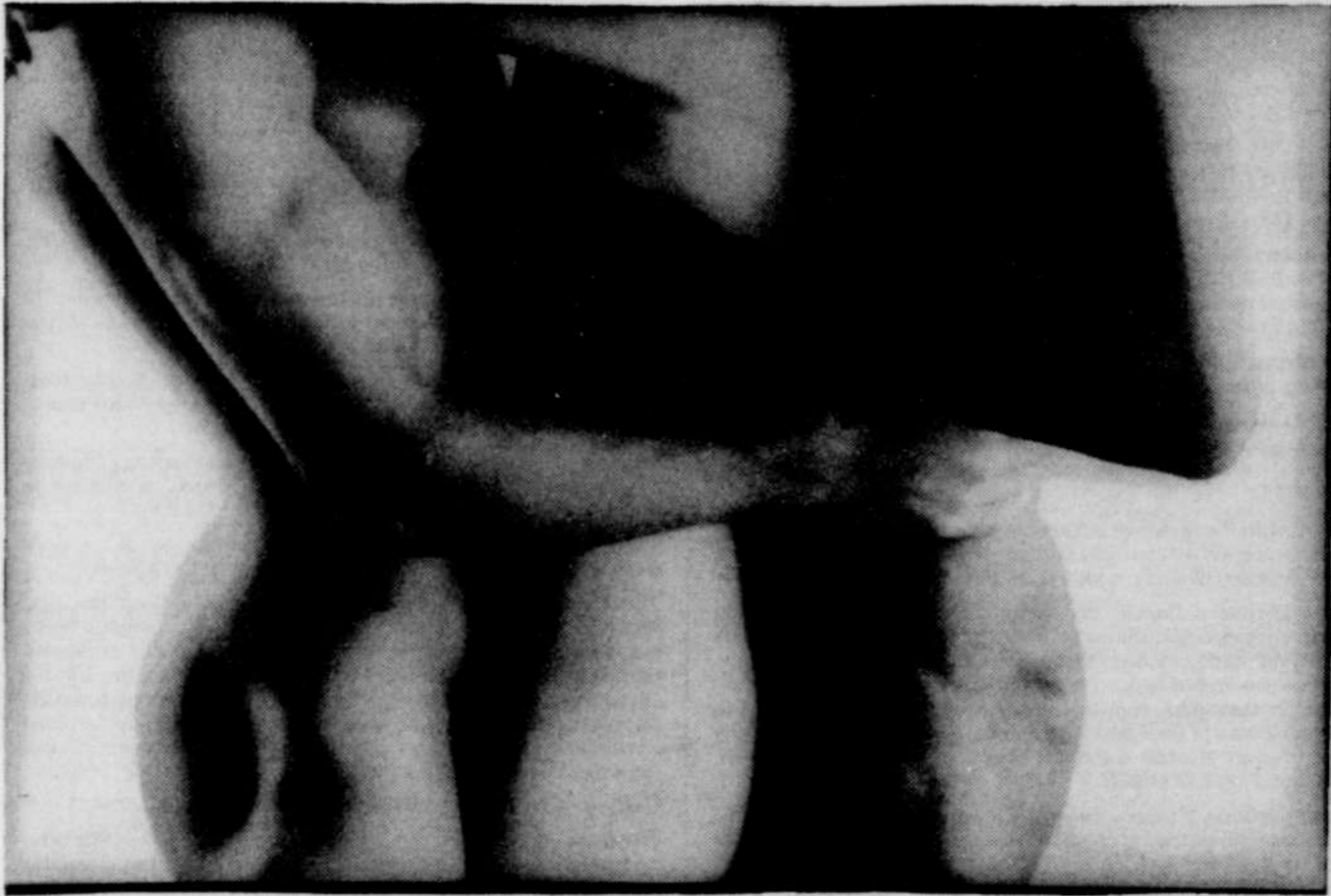
Lesbian Visual Artists Support Group meets regularly for vision, exploration and fun. We welcome new members. Meetings are held on the second Thursday and last Sunday of each month. (Call Margaret, 285-0340.)

Metro Club is a social group for gay men 40 and over and those who appreciate them. Potlucks monthly on the fourth Sunday. (234-0353.)

National Transvestite-Transsexual Hotline Service is a free information service for female impersonators, transsexuals and transvestites. (206-623-1549.)

New to Portland? An informal social group for lesbian and bisexual women new to the area meets the second Saturday of each month for brunch. (Call for time and place, Deirdre, 232-3835.)

North Portland Dykes support and social group. (Write PO Box 83892, Portland, OR 97283-0892.)



Work by Paul Dahlquist shows at the Photographic Image Gallery, Feb. 3-March 12, 208 SW 1st Ave., 224-3543.

Northwest Oregon Lesbian Artists Support Group meets the third Thursday of each month. (7-9 pm, Lorraine, 289-2510, or Willow, 625-7739.)

Northwest Scenic Cruisers is a group of gay and lesbian car enthusiasts dedicated to traveling the bygone highways of yesterday. Those with a fondness for "fins and flash" are invited to call for information on meetings and events. All club activities are alcohol-free. (Glenn, 656-0423, or Charlie, 253-5649.)

Oregon Guild Activists of S/M (ORGASM) includes people of all sexual orientations. Activities include dungeon parties, educational workshops, demonstrations and fantasy and erotica shows. (Oregon Guild, PO Box 5702, Portland, OR 97208.)

Out Loud Men's Reading Circle is forming to read aloud from literature, poetry, spirituality, politics and so on in a home setting. (Bob, PO Box 2126, Portland, OR 97208.)

Park Avenue Social Club is a weekly social group for gay men 18 to 30 years old. Other events include holiday parties, potluck socials and movie outings. (7:30 pm, Tuesdays, First Congregational Church, 1126 SW Park Ave., use Madison entrance and ring the bell, or write PO Box 2294, Portland, OR 97204; 238-0334.)

Portland Area Business Association is a group for lesbians, gays and friends in business, encouraging networking among community business professionals and creating awareness in the general public. Luncheons with guest speakers are held the second Monday of each month. (11:30 am-1:30 pm, Lower level, Portland Marriott Hotel, 1401 SW Front Ave., 223-2984 for reservations.)

Portland Imperial Rose Court is a social, charitable and community service organization. (Rose Emperor and Empress, PO Box 23, Portland, OR 97207; 287-7058.)

Portland Power and Trust, a women's S/M social group, is open for novice to experienced players. (PO Box 3781, Portland, OR 97208.)

Portlandia's Pride is a monthly social group of gay and lesbian employees of the City of Portland, Multnomah County and Metro. (245-2634.)

The Real Connection is a social gathering of men who are artistically and musically inclined. Meets the second Friday of every month. (282-0107.)

35 Plus for women meets for discussions, social support and activities. (Call Joan, 252-0762.)

Uncircumcised Society of America—Northwest Chapter is a social group dedicated to the interests of uncircumcised men and their admirers. (USA NW, PO Box 33190, Portland, OR 97233.)

VOICES (Voices of Individual and Community Empowerment from the Streets) is a rap group for queer youth. Meets weekly. Free pizza. (Phoenix Rising, 223-8299 or Outside In, 223-4121.)

Westside Organization of Women, now in its seventh year as a social organization for lesbians, invites you to join us. If you love to laugh, dance, camp, enjoy nature, gab and eat...you'll love our group. (Send \$10 for one-year subscription to newsletter, WOW, PO Box 5584, Aloha, OR 97006.)

Women in Academia Salon is a tea and discussion group, focusing on stimulating and varied topics. Everyone welcome. (3-5 pm, call for location, 223-2670 or 224-0537.)

Women's drumming group meets second and fourth Saturdays. Drums rentable for \$2. (7-9 pm, second and fourth Saturdays, The Healing Movement Center, 4703 N Albina Ave., \$2 donation, 299-9779.)

SPIRITUALITY

A Year And A Day, a gay and bisexual men's study group focusing on the pagan traditions and magical practices of the Celtic nations, is now forming. If you are interested in blending these religious qualities into an everyday working spirituality, please join us. (Dalydd, 774-8433.)

St. Philip Neri's Paulist Center sponsors **Catholic Gay and Lesbian Outreach** with Mass, followed by socializing. (7:30 pm, Fridays, 2408 SE 16th Ave., 231-4955.)

Congregation Neveh Shalom (conservative) sponsors gay and lesbian outreach. Meetings, services and other events are held monthly. (Shen Cordova, 246-8831.)

Dignity/Portland, the national organization of gay and lesbian Catholics, welcomes all to come to weekly Masses. Dignity believes that gay men and lesbians can express their sexuality in a manner that is consonant with Christ's teaching. Dignity/Portland sponsors an annual spiritual retreat at the Oregon coast and publishes a monthly

newsletter, *The Rose City*. (Mass: 7:30 pm, Saturdays, St. Stephen's Episcopal Church, Southwest Thirteenth Avenue and Clay Street; Mailing address, PO Box 6708, Portland, OR 97228-6708, or call 295-4868.)

First Congregational Church of the United Church of Christ is an open and affirming congregation that welcomes all people, regardless of sexual orientation. Wheelchair accessible and childcare available. (Worship 10:30 am, Sundays, 1126 SW Park Ave., 228-7219.)

Salem's First Congregational Church of the United Church of Christ is led by ordained lesbian minister Shelley R. Wagener. (700 Marion St. NE, 363-3660.)

First Unitarian Church of Portland welcomes lesbians, gays and bisexuals. (Services, 8:30, 10, and 11:30 am, Sundays, 1011 SW 12th Ave., Bill, 236-2830, or Kate, 224-5283.)

Friends for Lesbian and Gay Concerns Quaker Spiritual Support Group. Monthly potlucks on third Sundays. (Call for details, Bob, 777-2623, or Mary, 282-4961.)

Gay and Lesbian Atheists of Oregon meet the second Sunday of every month to promote the values of honesty, justice, compassion and love. (Atheist Community Center, 415 SW 13th Ave., 241-9268.)

The God Connection, a Center for New Thought Christianity, Rev. Casey Chaney and Rev. Berdell Moffett, Senior Ministers. (Worship 10 am, Sundays, 12525 SW Canyon Road, Beaverton, 643-7591.)

Heart in Hand: People Affected by AIDS in Prayer, gathers once a week for an hour of shared prayer. Guided by the tradition of St. Francis of Assisi. (7:30-8:30 pm, Thursdays, Franciscan House, 827 NE Alberta St., David Reinders, 287-9223.)

Integrity is a gay and lesbian ministry in the Anglican Communion. (Mass and potluck, 7 pm, second Fridays, St. David's Episcopal Church, 2800 SE Harrison St., 774-1064.)

Lake Oswego United Church of Christ, an open and affirming congregation, invites and encourages into its life and ministry all people, regardless of sexual orientation. (Worship 10:30 am, Sundays, 111 SW Country Club Rd., 635-4348.)

Lutherans Concerned/North America, is a pan-Lutheran association of lesbians and gays. (227-5431.)

Mass in Time of AIDS is held every Monday and provides spiritual assistance for those living with AIDS. (6 pm, 3835 SW Kelly St., Fr. Gary McInnis, 223-3444.)

Meditation Group for Women is a Saturday noon group for meditators or would-be meditators who like to sit together in silence. (Judy, 287-1539.)

Metanois Peace Community is a Reconciling Congregation of the United Methodist Church that welcomes lesbians and gay men in

its life and ministry. (Activity schedule, 284-7996; Co-pastors Joyce McManus, 284-3426 and John Schwiebert, 281-3697.)

Metropolitan Community Church of Portland is an ecumenical Christian church open to all people. Pastor Dennis Chappell. (Worship, 10 am, Sundays, office hours, 11 am-5 pm, Monday-Thursday, 1644 NE 24th Ave., 281-8868.)

Milwaukie United Church of Christ is a congregation that is open and affirming, and welcomes all people regardless of sexual orientation. (Worship, 10:30 am, Sundays, 4790 SE Logus Road, Milwaukie, 654-6770.)

People of Faith Against Bigotry is an interfaith group united to oppose hatred, fear and intolerance, especially in the political arena. (Dan, 230-9430.)

Potter's House is an evangelical and charismatic Christian Church open to everyone, with special emphasis on meeting the needs of the community. Join with pastor Bill Roberts. (Services, 9:30 am, Sundays, 7:30 pm, Wednesdays, 3830 SE 62nd Ave., 775-5024.)

Radical Faeries co-create their spirituality with nature, subvert uniformity and practice the politics of play. (235-0826.)

Reach Out is a support group for gay and lesbian former Jehovah's Witnesses and Mormons. (PO Box 1173, Clackamas, OR 97015; 657-0620.)

The Sacred Band is a spiritual brotherhood providing fellowship and support to gay and pagan men. (PO Box 13072, Portland, OR 97213.)

SDA Kinship is a monthly support and fellowship group for lesbian and gay Seventh-day Adventists. (PO Box 33104, Portland, OR 97233; 244-0286.)

Shalom Ministries is a United Methodist outreach ministry to and with the gay and lesbian community and supporters. Coming Out support group. (6:30 pm, Wednesdays.) Worship and discussion. (7:45 pm, Wednesdays.) Grief support group. (7:30 pm, first and third Tuesdays.) HIV/AIDS support group. (7:30 pm, second and fourth Tuesdays.) (United Methodist Church, 5145 SE Lincoln St., 760-4215.)

Sisterspirit is women sharing spirituality. All women welcome. Most events wheelchair accessible. Feminist Christian Community. Wheelchair accessible. (7:30 pm, Wednesday, Feb. 26, Queen of Heaven Gnostic Chapel, 2229 SE Market St.) (PO Box 9246, Portland, OR 97207; 294-0645.)

Spiritual Support Group for Lesbians is now forming. Our purpose is to explore and share our journeys of spiritual growth, and support one another in this process. Let's honor our diversity and celebrate our unity. (Call 520-0358.)

St. Mark Presbyterian Church welcomes you! Join us for worship. (10 am, Sundays, call for location, 244-8177.)

St. Stephen's Episcopal Church is an open and affirming congregation. Rector, the Rev. Constance A. Hammond. Eucharist and Healing service. (12:10 pm, Wednesdays.) Inclusive Language Eucharist. (5:30 pm, Thursdays.) Eucharist. (7:45 pm, Sundays.) Eucharist with choir, Sunday school and Nursery. (10 am, Sundays.) (1432 SW 13th Ave., 223-6424.)

Trinity Episcopal Church invites people with AIDS or HIV disease and friends to a monthly celebration of Evensong and Service of Healing. Every second Sunday. (5 pm, 147 NW 19th Ave., 222-9811.)

Unitarian Universalists for Lesbian and Gay Concerns meets for worship and meetings. Come where you are appreciated for being you. (First Unitarian Church, 1011 SW 12th Ave., 228-6389.)

United Methodists for Gay and Lesbian Concerns (Affirmation) meets monthly for potlucks and fellowship. (PO Box 12673, Portland, OR 97212; call Dick, 692-9019.)

University Park United Methodist Church is a reconciling Congregation which welcomes and affirms all persons regardless of sexual orientation. (Worship, 9:55 am, Sundays, 4775 N Lombard St., Karen Crooch, pastor, 289-7843.)

SPORTS

Adventure Group meets for outdoor activities. Mountain biking every Saturday at 10 am, meet by the OMSI red sign. Hiking every Sunday at 8 am, meet in front of the Lloyd Center Cinemas. (Recorded message, Friday through Sunday, 234-2941.)

Bicycle Decide and Ride for men and women meets Saturday mornings for rides of 30-50 miles. (9 am, Wallace Park, Northwest Raleigh Street and 25th Avenue, weather permitting, 227-1756.)

Dameel Fly Fishermen of all skill levels meet regularly to plan fishing trips, practice casting, fly fishing and having a good time! (Call 669-3492.)

The **Echo Theatre** offers classes in acrobatics, trapeze, improvisation, juggling and unicycling for children and adults. Call for class times. (1515 SE 37th Ave., 231-1232.)

Equus is a gay men's equestrian group for those who have horses, enjoy riding, or both. (Meets third Sundays, call 289-1323.)

Forest Group outings are cooperative adventures for women only. Participants are responsible for providing their own equipment and choosing outings appropriate for their skill and fitness level. (Call 253-3631.)

Gay and Lesbian ABC/WIBC Sanctioned Bowling Leagues meet September to April. New members always welcome. (7 pm, Fridays, Pro 300 Lanes, 3031 SE Powell Blvd., Rich, 233-6480.)

Lesbian's Volleyball is the place to go to get exercise, work off stress, have fun and socialize. Ends Feb. 11. (6:50-8:30 pm, Fridays, Abernethy Community School, 2421 SE Orange St., entrance and parking around back of school, \$1, call Renee, 232-4456.)

Portland Frontrunners meet Tuesday evenings, Saturday and some Sunday mornings. Runners and walkers at all levels are invited to join. (6:30 pm, Tuesdays, chin-up bars, Duniway Park track, SW Barbur Blvd. by the Metro YMCA; 9:30 am, Saturdays, Duniway Park track, 10 am, first and third Sundays of the month, Laurelhurst Park, Northeast 39th Avenue and Ankeny Street, call Tamara, 233-4937.)

Portland Gay and Lesbian Community Bowling Association (11 am, Sundays, Pro 300 Lanes, 3031 SE Powell Blvd.; call Tom, 293-0438, or write PCBA, PO Box 851, Portland, OR 97207.)

Pride of Portland Men's Softball plays in the Portland Park and Recreation League. (Call 659-1682.)

Rosetown Ramblers, Portland's gay and lesbian square dance club, dances at mainstream, plus and advanced levels. (7-9:30 pm, Wednesdays, basement, Trinity Methodist Church, Southeast Thirtieth Avenue and Steele Street, PO Box 5352, Portland, OR 97228; Doug, 331-0745, or Michael, 297-6416.)

Team Portland is readying teams and individuals for Gay Games IV in New York, June 1994. Join us the third Thursday of each month. (Call 795-9496, or write PO Box 6803, Portland, OR 97228.)