

out about town

november

1 MONDAY

Cygnnet Productions presents **Variations on a Bard**, performed by Ted Roisum with improvisational musical commentary by Andre St. James, Larry Natwick and Gail Verdurmen. (8 pm, Morrison Books, 1420 SE 37th Ave., \$5, 230-8827.)

2 TUESDAY

First Tuesday Coffeehouse features Gwen Thomas, Tanya and Liz of "Riversong," and Shannon Houston. Carol Steinel emcees. Interpreted for the hearing impaired. (7:30 pm, Bijou Cafe, 132 SW 3rd Ave., \$3, 233-2047.)

Internationally acclaimed vocalist, composer and activist **Diamanda Galas** performs her *Plague Mass*, challenging society's response to the AIDS epidemic. (8 pm, Grand Ballroom, North Wing [formerly the Masonic Temple], Portland Art Museum, 1219 SW Park Ave., \$13 regular, \$10 members, working artists and students, 226-2811.)

4 THURSDAY

Salem Theater of Performing Arts stages a production of Erik J. Hendrickson's **All Our Lives**. Friends, lovers and parents tell the story of Billy Williams, who has died of AIDS. Benefits the Mid-Willamette Valley Hospice and the Grand Theatre. (The Grand Theatre, Salem, \$10 [at the door or charge by phone, 390-7469], call for details, 588-7002.)

The **First Thursday Gallery Walk** features single panels of the NAMES Project AIDS Memorial Quilt made by local panelmakers. Several galleries in the Pearl District are participating.

5 FRIDAY

You've seen her on Comedy Central, on A&E's "An Evening at the Improv," on Olivia cruises and at women's music festivals. Now see **Suzanne Westenhoefer** in "Nothing in My Closet but My Clothes." (8 pm, Clinton St. Theater, 26th and Southeast Clinton, \$11 advance [tickets: Fred Meyer Fastixx outlets, 224-8499 and It's My Pleasure, 236-0505] \$13 at the door.)

"**Greater Tuna**" plays the Theatre Paris, with the original Portland cast. This hilarious evening of entertainment has played off and on around Oregon and now they're back for a limited engagement! (8 pm, Fridays and Saturdays, 6 SW 3rd Ave., through Nov. 27, \$13.50, call Fastixx for reservations, 224-8499.)

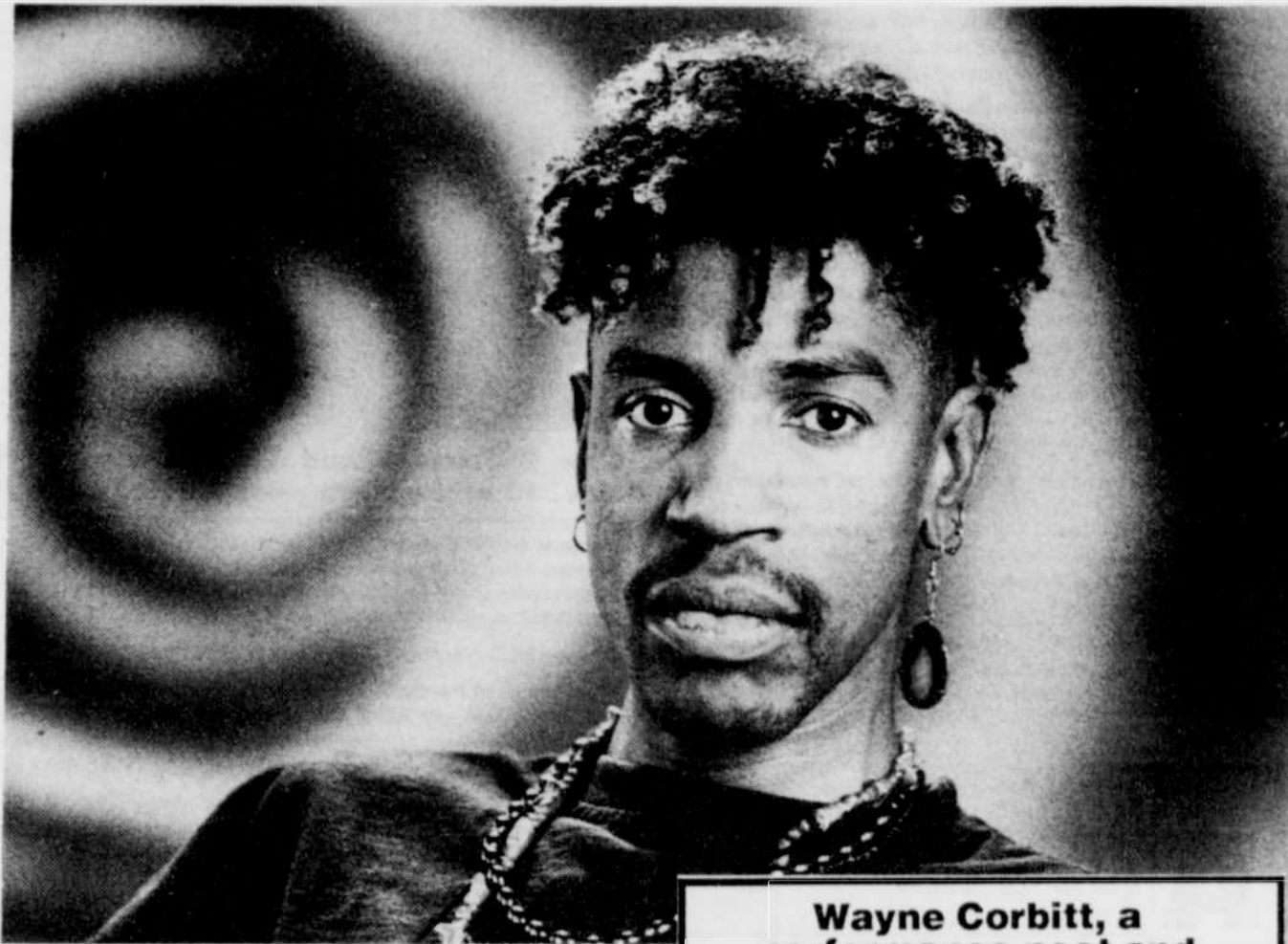
Do Jump Movement Theatre continues its fall extravaganza for viewers of all ages. See trapeze work, whimsical costumes, unicycling, illusion, mischief, clowning and lots of humanity. Through Nov. 20. (8 pm, Fridays and Saturdays; 2 pm, Sundays, Echo Theatre, 1515 SE 37th Ave., \$7-11 [tickets: Echo Theatre, 231-1232 or Fastixx, 244-8499].)

Forest Group planning potluck for women only. Bring your own place setting. (Call for details, 235-3242.)

Artists Repertory Theatre hosts the Portland premiere of Scott McPherson's play, **Marvin's Room**. Created while both the playwright and his partner battled AIDS, *Marvin's Room* is a touching family story. Sign-interpreted performance Nov. 28 and discussions with the artists on Nov. 7 and 14. (7 pm, Wednesdays; 8 pm, Thursdays-Saturdays; 2 pm, Sundays, 1111 SW 10th Ave., \$15-20 [tickets: box office or call, 242-9043].)

6 SATURDAY

The Tri-County Domestic and Sexual Violence Intervention Network announces a **Domestic Violence**



Wayne Corbitt, a performance poet and playwright appears in Sex Is a film playing at Cinema 21 Nov. 5-8.

ence Institute. The day-long series of workshops will focus on issues of interest to educators, health care and alcohol and drug treatment professionals and other social service providers. Wheelchair accessible. Free childcare and parking available. (8 am-5 pm, Cramer Hall, Portland State University, \$25-\$50 sliding scale, call for information or registration forms, Jamie Cathey, 223-6281, ext 3020; Dottie Smith, 222-6222.)

BPA Gay, Lesbian and Bisexual Employees are holding a potluck. Other federal employees welcome. (Call for details, 293-2483.)

Forest Group hikes Mt. Hood. (Call 253-3631.)

Singer/songwriters **Bill Morrissey** and **Erica Wheeler** perform at the Blue Heart Cafe. 21 and over. (8 pm, Melody Ballroom, 615 SE Alder St., \$10 [tickets: Artichoke Music and Fastixx, 244-8499], \$12 door.)

Benefit for the **Rural Organizing Project** features musicians Barbara Bernstein, Connie Cohen, Kathleen Fallon and Terri Grayum. Wheelchair accessible. (7:30-10:30 pm, Laughing Horse Books, 3652 SE Division St., donation at the door.)

Zoa Smith performs new work, including collaborations with keyboardist B.J. Castleman. Folk rocker Clarence Goodman opens. (7:30-9 pm, Third World Coffee Co., 3588 SE Division St., no cover, 233-8968.)

Working group meeting for the **Lesbian, Gay and Bisexual Cultural Resource Center**. (10 am-noon, Smith Center, Portland State University, call 295-9732 to confirm room number.)

Gay and Lesbian Mahjong Club meets. (Call Paul for location and details, 693-0963.)

All Our Lives closes. (See Nov. 4.)

7 SUNDAY

Museum Family Sunday features demonstrations of traditional Japanese arts including: classical dance, flower arranging, bonsai, martial arts, tea ceremonies and origami. (1-5 pm, 1219 SW Park Ave., free to children, \$4.50 adult admission charge for non-members.)

The Cutting Crew is hosting a **benefit cut-a-thon** with all proceeds going to the NAMES Project AIDS Memorial Quilt. Call for an appointment. (10am-5 pm, 3621 SE Hawthorne Blvd., \$15, 232-2402.)

8 MONDAY

A drop-in group for **HIV-negative gay and bisexual men** will offer support and provide a safe place for HIV-negative men to communicate their

needs around such issues as dating and intimacy, safe sex and feelings of survivor's guilt. (7-9 pm, Cascade AIDS Project, Suite 300, 620 SW 5th Ave., 223-5907.)

Final performance of **Variations on a Bard**. (See Nov. 1.)

9 TUESDAY

Donald Jenkins, Curator of Asian Art at the Portland Art Museum, presents a lecture on "**Layers of Meaning: The Interplay of Art and Literature in Late 18th Century Ukiyo-e**." (5:30 pm, Berg Swann Auditorium, Portland Art Museum, 1219 SW Park Ave., \$5 general; \$3 members and seniors, 226-2811.)

10 WEDNESDAY

A **Benefit for Leonard Peltier** includes a free showing of the film *Incident at Oglala*. Following the film, Steve Robideau, first cousin to Peltier and the regional organizer of northwest Leonard Peltier support groups, will speak. (6 pm, Room 126, Smith Memorial Center, Portland State University, free, donations accepted.)

AIDS Forum Live airs monthly on Portland Cable Access. November's topic: "Cascade AIDS Project, the Wellness Program." (8-9 pm, Channel 11, and in parts of Clackamas County, Channel 2.)

11 THURSDAY

Award-winning print and broadcast journalist **Linda Ellerbee** presents a talk entitled, "Move On... Adventures in a Real World." Part of a four-part lecture series which includes appearances by Sarah Brady, Geri Jewell and Cicely Tyson. A percentage of proceeds will be donated to the Reach for a Star Fund, which supports non-profit organizations that work with women and children. (7:30 pm, First Congregational Church, 1126 SW Park Ave., \$94 general admission to series, \$144 patron admission which includes reserved seats and post-lecture receptions with speakers [tickets: Ticket Master, 224-4400 or Voices, Inc., 294-7994].)

Dr. Irene Campos Carr speaks on "**The Sociology of Hispanic Women in Prose and Poetry**." Part of the Latina Experience lecture series sponsored by the Miracle Theatre. Through Nov. 12. (Call for details, 236-7253.)

12 FRIDAY

"**LuRain Penny: The Wonder, a Seasonal Tale**" benefits The Arc of Multnomah County, advocating for people with developmental disabilities. Wheelchair accessible. (8 pm, Fridays and Saturdays, Theatre on the Park, 904 SW Main St., through Dec. 18, \$14-18 [tickets: by reservation, 226-6544 or at the door].)

Science, Technology and Society Lectures present "**Virtual Reality: From Cyberspace to Virtual Communities**" with Howard Rheingold. (7:30 pm, Arlene Schnitzer Concert Hall, call 224-8499.)

13 SATURDAY

Cris Williamson and Tret Fure celebrate the release of their first album together, "Postcard From Paradise." Wheelchair accessible and ASL interpreted. (8 pm, Northwest Service Center, 1819 NW Everett, \$13 in advance [tickets: Fred Meyer Fastixx outlets, 224-8499 and It's My Pleasure, 236-0505] \$15 at the door, 224-8499.)

Boka Marimba plays two shows at Mt. Tabor Pub. Come and enjoy dance music of Zimbabwe. (All ages show, 7:30-9 pm; over 21 show, 9:15-11 pm, 4811 SE Hawthorne Blvd., \$6, children 12 and under free.)

Forest Group hikes today. Women only. (Call 768-9104.)

Stark Raving Theatre's productions of **The Only Game in Town** and **Adult Orgasmo Escapes from the Zoo**, close tonight. Wheelchair accessible. (8 pm, 4319 SE Hawthorne Blvd., \$8, 232-7072.)

Galloway and Luckett perform at Whitehorse Coffee. No smoking, no alcohol. (8 pm, 2055 SW Tualatin Valley Highway, Hillsboro, no cover, 640-4961.)

14 SUNDAY

Potluck brunch for **Women with Women with Infants and Toddlers**. (10 am-noon, call 777-5307.)

Jewish Lesbian and Bisexual potluck brunch. (11 am, call 284-7570 or 282-4733.)

Concord Choir opens their ninth concert season with "**Nation of Nations**," an all-American concert with a sampling of contemporary and traditional pieces. Features a performance of Tomas Svoboda's "Separate Solitude." (8 pm, Scottish Rite Temple, 709 SW 15th Ave., \$12-15 [tickets: Artichoke Music, Classical Millennium, New Renaissance Bookstore or call the Concord ticket line, 760-3722].)

15 MONDAY

Quarterly meeting of the **Oregon Sexual Minority Youth Network** general membership. People of all ages are invited to help design programs to meet the needs of gay, lesbian and bisexual youth. (6:30 pm, Multnomah County Youth Program Office, 421 SW Fifth Ave., 2nd floor, Portland, free, Jim Clay, 248-5464.)

20 SATURDAY

"**The Way Back**" an all-day celebration of creative work by women survivors of childhood abuse includes visual art, poetry, a symposium on creativity and music. (Westminster Presbyterian, 1624 NE Hancock St.)