

# out about town

## ATHLETICS

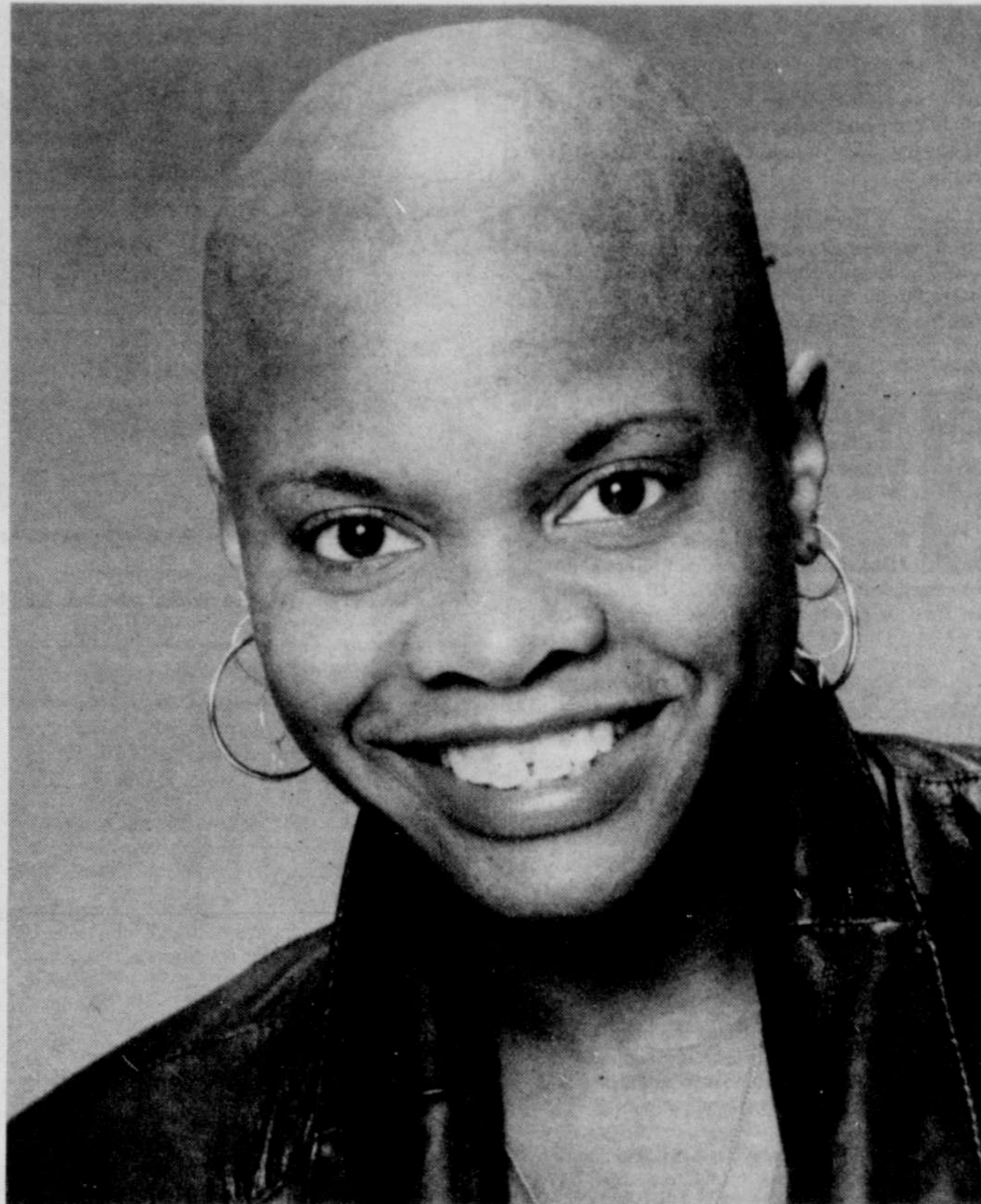
The **Adventure Group** is beginning its fifth year with a full schedule of cross-country skiing trips, hikes, and other outdoor activities (see Groups). All activities are open to women and men. Work off some of those holiday turkey blues and enjoy the great Oregon outdoors!

The **Portland Gay Community Bowling Association** begins its 13th annual bowling season starting Jan. 6 (see Calendar and Groups). The 1990 season saw an overflow crowd on opening day and a waiting list to join! Portland's gay leagues are the largest in the state. The season runs about 15 weeks and includes a wide variety of events. Call 293-0428 or write PCBA at PO Box 851, Portland, OR 97207.

## COMMUNITY

Great American Youth sponsors the second annual **Mr. and Ms. Gay Teenage Oregon Pageant** on Dec. 16 at the City Nightclub (see Calendar). The pageant's aim is to recognize those persons who can best represent Oregon's gay and lesbian teenagers and to help people understand what it's like to be a gay teenager today. Contestants will be judged by a distinguished panel of gay community activists. Categories include a dress and sports look, a talent competition, a one minute speech on growing up gay, and answering questions from the panel. Prizes include over \$1000 in cash and prizes to the winners! Darcelle hosts. Call Jeff Hood at 224-2489 or Lanny Swerdlow at 239-0760.

Don't forget to visit the **Quilt** while it stays in Portland. It will be displayed at the Convention Center through Dec. 2. There are activities planned at Metropolitan Community Church throughout the weekend in honor of the Quilt (see Calendar). This will be the largest such event in the world on Dec. 1, World AIDS Day. It is a beautiful and very touching memorial to those who have died in the struggle against this pandemic.



Comedienne Renee Hicks appears at Northwest Service Center with **Two Nice Girls** Dec. 8 at 8 pm.

## MUSIC

You can expect the best from the **Portland Lesbian Choir** as they present **Solar Invocation, A Solstice Celebration** on Dec. 15. Tickets are \$10-\$14 at the door, sliding scale. Advance tickets are \$8-\$12 at Ladd's Editions. The PLC has been growing which will make their beautiful sound even more beautiful. Don't miss this one (see Calendar).

The **Portland Gay Men's Chorus** presents their holiday concert **"Home for the Holidays"** on Dec. 2. The music ranges from classical to contemporary to popular, and from sacred to irreverent. New direc-

tor Jon Rollins will be conducting (see Calendar). Two performances at 4 and 7:30 pm.

**Two Nice Girls** and comic **Renee Hicks** appear at the Northwest Service Center on Dec. 8 at 8 pm. Two Nice Girls are actually four women from Austin, Texas. San Francisco comedienne Renee Hicks opens (see Music).

## THEATER

Check out **Carol Steinel's** own unique brand of humor and music at the Columbia Theater on Jan. 5. Deeply involved in political organizing, theater, social service, a six-year relationship, two kids, and her business, Steinel will make you laugh as she draws from her experiences (see Calendar).

The production of **An Invitation from the Queen: Alice Underground**, Dec. 7 and 8, directed by Tanya Ignacio, should be a lot of fun. An original multi-media adaptation of Lewis Carrol's *Alice in Wonderland*, the production combines drama, dance, and film and focuses on the inconsistencies, incongruities, and funkiness of *Alice*. Music is by Vance Galloway and ranges from rap to waltz (see Calendar).

**Susie Bright** appears at the Northwest Service Center on Dec. 14 speaking about "Sex in Public: Erotic Representation, Censorship and Sex in the 90's." Bright takes a celebratory approach to lesbian sex in all its forms. Worth catching (see Theater).

## COMING UP

Got your New Year's resolutions ready yet? 1991 is the year for weight loss, weight gain, health, happiness, relationships, career, money, whatever you want. And you can start the New Year off right at the **Sober Fair 1991 New Year's dance** (see Calendar). Your donation at the door helps fund Sober Fair 1991.



Leapin' lesbians! It's the **Great Lesbian New Year's Eve party** at Echo Theatre! Sponsored by the Lesbian Community Project and the Portland Lesbian Choir, this promises to be the last fun event of 1990 and the first one of 1991! So put on those party hats and celebrate the New Year with your sisters (see Calendar)! Tickets are \$7 in advance (LCP, PLC, Catbird's Seat, Ladd's Editions) or \$8 at the door. The party takes place at Echo Theatre on New Year's Eve.

**Happy New Year from Just Out!** May all your dreams come true in 1991.