

feeling  
a little

insane?



Win a trip for two in sunny Acapulco



Drawing to be held Feb. 28th, drop in for details.

brought to you by Portland's first non-tipping salon...

at Gary Luckey on Broadway,  
we won't accept a tip from any body.

1323 NE Broadway 281-7831 288-7831

**GARY  
LUCKEY**



AS WE ENTER 1990, we would like to give recognition to our staff members who have given you so many years of good service!

Charlie Kirby  
Mary Gates-King  
Rick Brodner  
(since 1986)

Anne Laufe  
John Kilbourne  
Laurie Huntwork  
(Since 1987)

Myriam Baker  
Ron Edmonds  
Mark Furstenberg  
Jennie Sherwood  
(Since 1988)

During 1990, we will offer expanded seating in our new south "quiet" dining room opening in late January and a completely remodelled main dining room by summer.

Holly Hart, Proprietor & General Manager  
Paddy Collins, Chef      Kate Johnson, Sous Chef  
Maude Goin, Dining Room Manager  
Sherrie Carrero, Asst. Dining Room Manager

**Old Wives Tales Restaurant**

1300 EAST BURNSIDE  
PORTLAND • 238-0470



Rejuvenation  
House Parts Co.  
and the  
Historic Preservation  
League of Oregon

present

1990 Winter Lecture Series  
**THE ENGLISH INFLUENCE:**

Tudor Revival Homes  
and English Cottages.

An Historical Review of Pre-War  
Oregon Architecture.

Lectures and slide presentations by  
Historic Preservation Professionals.

Thu., Feb. 8 7:30-9:30 pm **Origins of the Styles**  
Richard Longstreth, Director of Grad Program  
in Historic Preservation, George  
Washington Univ.

Tue., Feb. 13 7:30-9:30 pm **Regional Architects and the English  
Influence**  
Alfred M. Staehli, Architectural Conservator  
William John Hawkins II, Architect and  
author on Architectural History.

Tue., Feb. 20 7:30-9:30 pm **English Style Gardens in the Northwest**  
Wallace K. Huntington, Landscape Architect  
Gretchen Hall Carnaby, Garden Designer

Tue., Feb. 27 7:30-9:30 pm **Tudor and English Cottage Interiors**  
Paula M. Madden, Antique and  
Fine Arts Appraiser.

Sun., Mar. 4 2:00-5:00 pm **Tour of Historic Homes in Laurelhurst**  
(open to season ticket holders only)

LOCATION: Northwest Service Center  
1819 NW Everett

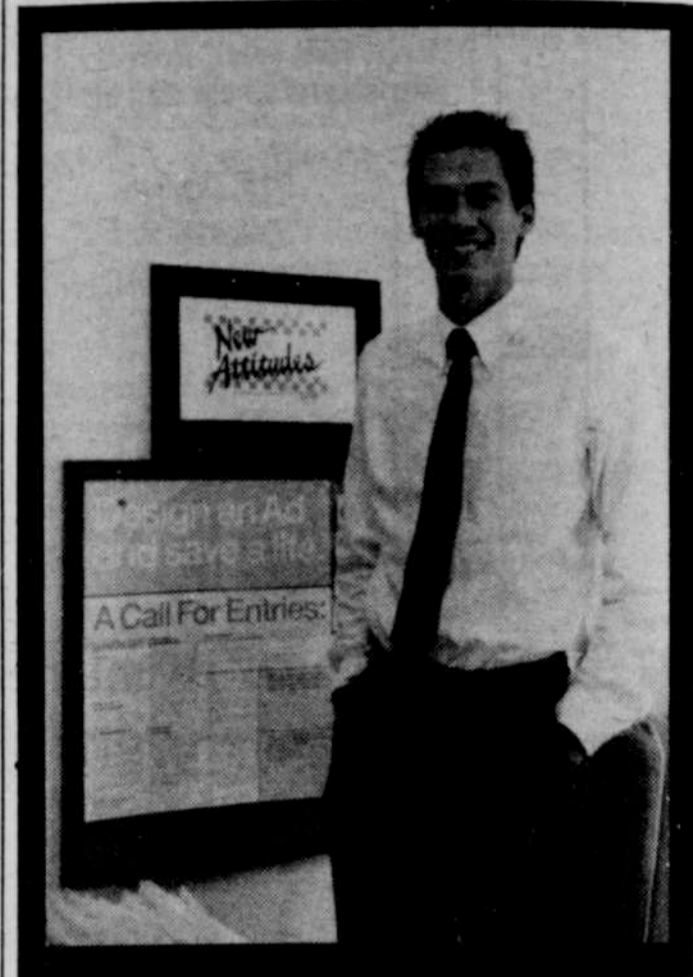
TICKET \$35.00 General Admission  
INFO: \$ 7.00 Single Evening

Make check payable to HPL/O; Send with self-addressed,  
stamped envelope to: HPL/O, P.O. Box 40053,  
Portland, OR 97240 (Phone 243-1923)

Supported by a contribution from  
Rejuvenation House Parts Co.,  
901 N. Skidmore — (503) 249-2038



I N  
M E M O R I A M



Stephen Randall "Randy" Ponce  
(1960 - 1989)

Randy Ponce died peacefully at home on December 6, 1989 of hepatic failure as a result of AIDS. He was in the company of loved ones at the time of his journey and was blessed with the support of many friends in the preceding weeks and months.

When Randy was diagnosed with HIV disease he quickly became involved in learning all he could about its potential complications to his life. During this search, he was somewhat surprised to discover its many blessings.

In 1986, Randy returned to California where he was very involved in many AIDS-related groups and organizations; including the weekly Louise Hay "Hay-rides," AIDS Mastery, and Orange County AIDS Services Foundation. Fortunately, in late 1987, a longing for Oregon and loved ones brought Randy back to Portland. Utilizing much of what he learned in California, he became the Education Coordinator at the Cascade AIDS Project. During his tenure there he touched many throughout the community with his ready smile and constant humor as the need for information about AIDS experienced rapid changes and growth.

At the AIDS Memorial on Memorial Day, 1989, Randy spoke eloquently about the positive changes AIDS may bring into our lives as it had his. Proof of this was borne out as his disease process continued, for over thirty friends and family came together unselfishly and provided Randy care twenty-four hours a day and sustained him with love and care, as he had always done for us.

Randy is survived by many loving people. Survivors include his parents, Donna and Cal Hall, and Steve and Koni Ponce, and grandmother, Billie. Portland family includes Kelly and Joan Chronister, Mimi Luther, Fred Allemann, Scott Stein, and the "Care Team."

Randy, we'll all miss you dearly. You now know the secret that we all will share someday. It hurts us all to not hear your laughter or see your smile. But there are many who don't share our pain and sorrow, and for them we all feel sadness, for they were never lucky enough to know and to love you.

"...I know a passion still more deeply  
charming that fever'd youth e'er felt: and  
that is love, by long experience mellow'd  
into friendship..."

— James Tomson

## The Coffee Merchants

The finest imported coffee  
beans, teas, chocolates, and  
beverage brewing accessories.

THE BROADWAY COFFEE MERCHANT  
1637 N.E. Broadway • 284-9209

THE HAWTHORNE COFFEE MERCHANT  
3562 S.E. Hawthorne • 230-1222

THE HILLSDALE COFFEE MERCHANT  
Hillsdale Shopping Center • 244-4822



Advertising in just out works . . .

"Our ads in just out have brought  
the most favorable response of  
anything we've ever done."

Ron Joy  
Hal Jones Automotive