

out about town

G R O U P S

Portland Leathermen is an informal social group that gathers regularly to wear and enjoy black leather. (10 pm, Fridays, Dirty Duck Tavern, 439 NW 3rd Ave.)

The Healing Connection is a breakfast gathering of lay people and professionals who come together to hear speakers, enjoy good food, meet and network with others, and start the day with a positive focus on personal and planetary healing. (7-8:30 am, first and third Thursdays, Ezekiel's Wheel, 2106 NW Northrup St., 281-0332.)

The Funny Ladies Afternoon Tea and Posey Society is a social organization of gay women 35 and over that offers monthly get-togethers, including trips to the theater, concerts, skiing, swimming and potluck dinner. (Elaine, 659-8778.)

A support group for **Gay Dads** meets twice a month to share problems and solutions and good times and bad. The group is for dads who may or

may not have custody or who are trying to adopt. (7:30 pm, first Tuesdays and third Thursdays, Glenn, 223-5951.)

Westside Organization of Women is a social group for west-side women who identify as gay and lesbian. A seasonal newsletter announces the group's events. (\$6 subscription, 17275 SW Blanton, Aloha, OR 97007, 643-9345.)

Debtors Anonymous is a 12-step recovery program for compulsive debtors and overspenders that uses methods similar to those of Alcoholics Anonymous. (7-8:30 pm, Tuesdays, Room 5; Thursdays, Room 4, fifth floor, Holladay Park Medical Center, 774-8048 or 220-0743.)

SPIRITUALITY

The **Buddhist Association of the Gay/Lesbian Community** serves for the spiritual growth of gay and lesbian Buddhists; acts as a medium for the exchange of ideas and experiences about the unfolding of the Buddhidharma; and believes that the Buddha, Dharma and Sangha have special relevance to lesbians and gays. (PO Box 1974, Bloomfield, NJ 07003.)

Metropolitan Community Church of the Gentle Shepherd is a small, loving congregation that worships together in Vancouver, Washington, and welcomes those looking for a spiritual community with a family feeling. (4:30 pm, Sundays, 4505 E 18th St., Vancouver, [206] 232-2512.)

Gay Men's Pagan Circle is a new group that meets monthly for socialization, networking, discussion of pagan spirituality, weekend wilderness retreats and ritual celebration. (The Sacred Band, PO Box 13072, Portland, OR 97213, Mark, 254-5048.)

Genesis is a weekly support group for men who advocate healing the conditions caused by AIDS through positive imagery, affirmations, unconditional love and camaraderie. (7 pm, Tuesdays, 287-8858.)

Affirmation is a social and support group for lesbian and gay Mormons, their families and friends. (Portland/Vancouver Group, PO Box 2917, Vancouver, WA 98668, [206] 696-9396.)

United Methodists for Gay and Lesbian Concerns (Affirmation) meets monthly for potluck and fellowship. (Affirmation, PO Box 12673, Portland, OR 97212, Paul, 287-6719.)

"That's What Friends Are For" is the monthly meeting of the Society of Friends. This is a lesbian and gay meeting. (11:30 am, first Sunday, 4312 SE Stark St., Mike, 236-6558.)

SISTERSPIRIT

Sisterspirit is women sharing spirituality. All women are welcome. There is no charge.

Dec. 5, Monday: Sistersong. (7 pm, Gabriele, 288-2380.)

Dec. 6, Tuesday: Group Meditation. (7:30 pm, 2804 NE 42nd, Sally, 282-8615.)

Dec. 15, Thursday: Healing Circle. (7:30 pm, 2804 NE 42nd, Gayle, 283-2764.)

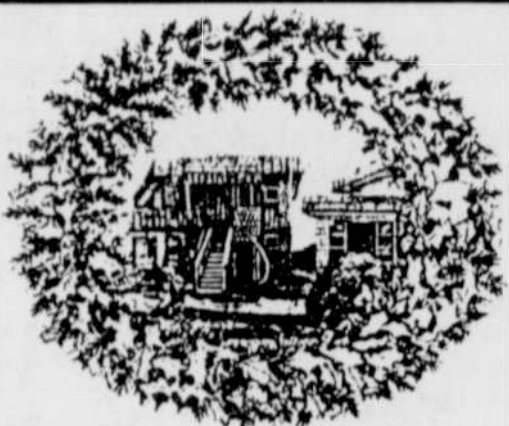
Dec. 21, Wednesday: Wiccan Discussion Group. (7:30 pm, Pat, 774-3622.)

Dec. 27, Tuesday: Christian Discussion Group. (7:30 pm, 1431 NE Broadway, 287-3379.)

Jewish Women's Group. (Shulamit, 232-8237.)

Dignity is a spiritual support group for lesbian and gay Roman Catholics. (Saturdays, 7:30 pm, St. Francis Church, Southeast 12th and Pine Streets.)

SDA Kinship is a support and fellowship group for lesbian and gay Seventh-day Adventists. (Meets monthly, PO Box 334, Hillsboro, OR 97123, 244-0286.)

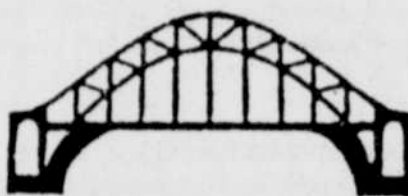


The See Vue

Lodging — where mountain meets the sea

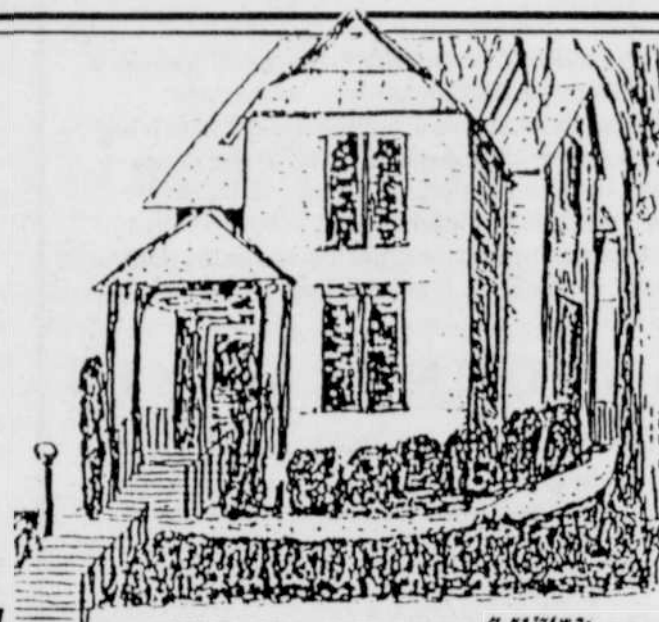
95590 Highway 101
6.2 miles south of
Yachats, Oregon 97498
(503) 547-3227

Joyous
Holiday
Greetings
From the Staff of



Bridgetown Realty

1431 NE Weidler St.
Portland, OR 97232



287-9370



**GIFTS
FOR YOUR
GARDENER**

POTTED PAPERWHITES • BOOKS • TOOLS
BAY WREATHS • PLANTS • CHRISTMAS GIFTS
DRAGONFLY GARDENS
2230 SE Hawthorne Blvd.
235-9150

Hours: Mon.-Sat. 10-6
Sun. 10-5

YES! WE GIVE YOU THE BEST OF
WHAT WE KNOW

- Wardrobe Color Analysis and Consultation
- Half & Full Hour Therapeutic Massage Sessions
- A Full Range of Natural & Chemical Hair Design Possibilities



Open Hands

For an Appointment
Call 236-1607
8707 SE 17th
Open Tuesday-Saturday
Gift Certificates Available

E A T I N G O U T

Lunch & Sunday Brunch

STARKY'S
fine dining & lounge



230-7980

2913 SE Stark, Portland

HAPPY HARVEST

G R O C E R S

HIP FOODS FOR HEALTHY PEOPLE

STOP IN AND SAVOR THE DIFFERENCE!
OUR VEGETARIAN CAFE IS SERVING
HOMEMADE SOUP, CHILI, DAILY SPECIALS AND
MORE FOR LUNCH AND SUPPER
NOW SERVING ESPRESSO DRINKS

235-5358
2348 SE ANKENY

SAY YOU SAW IT IN JUST OUT
ONE BLOCK S. OF BURNSIDE

Karen Harding's

Cup & Saucer



Come & Enjoy our casual
coffeehouse atmosphere
for a continental breakfast,
lunch or just a cappuccino
to go with your favorite novel.
Full breakfast weekends.

• Homemade Soups • Espresso Bar •
T-TH 7a-6p, F-S 7a-9p, Sun 8a-2p
3566 SE Hawthorne • 236-6001