

Professional and quality service for your special needs.



Kathy Tysinger
Res. 665-2936

- Residential, HUD Properties, Business Opportunities/Commercial.
- Free consultation: The Buying Process, Earnest Money Agreements, Competitive Market Analysis, Financing.
- Buying or Selling.
- City or Country.



Bridgetown Realty
(503) 287-9370
2305 N.E. Broadway
Portland, OR 97232

*Draw yourself out
with the art of
conversation —
My eyes will
be listening and
your pictures...
worth a thousand
words.*

*Ann Hinds
Art medium 274-9591*



The City Nightclub

Portland's only
all-age, gay nightclub.

The best in music,
lights and action.

SHOWTIME
Saturday - Midnight

Hollyrock Lounge

Before Hours &
After Hours

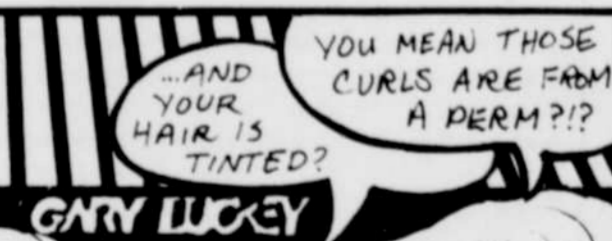
624 S.W. 13th
(between Morrison
& Alder)
Portland, Oregon
Info? 224-CITY



COMMUTING TO WORK....



... LATER THAT WEEK



GARY LUCKY 1323 NE Broadway 281-7831 288-7831

out about town

PUBLIC INTEREST

A **women's book discussion group** meets once every three weeks at A Woman's Place Bookstore. *That's What She Said: Native American Women's Poetry and Fiction* will be discussed March 17. (7 pm, Joli, 284-1110.)

Gay Men Together is a lively discussion group that is open to all supportive PSU students, faculty and general community. This month's topics: March 2, "Are You A Slut?"; March 9, "Carry On My Wayward Son: Dealing With Parents"; March 16, "Age Before Beauty: Growing Old In The Gay Culture"; March 23, "How To Make Safer Sex Fun"; March 30, "Dominance and Submission." (7-10 pm, Wednesdays, Room 103, Cramer Hall, Portland State University, 228-6935.)

Tea and Lesbians provides a monthly chance to ponder, meditate, muse and ruminate over those timely topics of our lives in a thoroughly genteel environment. (Pat, 775-5888.)

Portland Big Mountain Support Group meets to discuss direct action, food and supply drives, and work brigades for the Spring Gathering on April 14-17. (7 pm, March 8 and 22, 3029 SE 21st Ave., 236-0399.)

Roseburg resources: Gay and Lesbian Youth Group meets weekly. (1-3 pm, Sundays, Gay and Lesbian Community Center [GLCC], 3856 Carnes Road, Roseburg, 679-9144.) HIV Support Group. (7:30 pm, Mondays, GLCC, 3856 Carnes Road, 679-9144.) Gay and lesbian discussion group meets weekly. (7:30 pm, Tuesdays, First United Methodist Church, 1771 West Harvard Blvd., 679-9144.) **Gay and Lesbian Alliance** meets monthly. (7:30 pm, second Thursdays, GLCC, 3856 Carnes Road, 679-9144.)

Forest Group events are open to all women interested in hiking, bicycling and other outdoor activities. Participants must provide their own equipment.

Friday, March 4: Potluck at 6:30 pm; meeting at 7:30. (5005 NE Killingsworth St., Ella, 287-2459.)

Saturday, March 5: Potluck brunch before International Women's Day Celebration. (282-6391.)

Sunday, March 6: Cross-country skiing, advanced beginner to intermediate. (Catherine, 238-2759.)

Monday, March 21: Bowling! (6 pm, Sarah, 282-6391.)

The **Portland Park Bureau** spring program guide will be available March 14. The spring term is April 4-June 3. (Free guides available at Room 502, 1120 SW 5th Ave., Multnomah County libraries and Fred Meyer stores.)

Contributions are sought for **Dykes, Disability and Stuff**, a networking newsletter that will provide fiction, art, poetry, comics, news, views, reviews, arts, letters and verse, as well as controversy, ideas, resources and friendship possibilities. This newsletter is still in the formative stages and aspires to network nationally and internationally among women with an interest in health, ability, visibility and disability. (Send contributions of articles, news and money to UPE, PO Box 6194, Boston, Mass. 02114-6194.)

The Women's Studies Program at Portland State University has announced a call for presentations for the annual **Northwest Women's Studies Association Conference**, to be held at PSU, October 7-9, 1988. Presentations may be panel discussions, workshops, performance pieces, media presentations or academic papers. The topic should relate to the theme "Joining at the Crossroads: Women's Thoughts, Actions and Community." (Send a one- to two-page proposal to Women's Studies Program, Portland State University, PO Box 751, Portland, Ore. 97207, by April 1, 1988.)

Women with preschool children will meet for support and children's group playtime. (Holly, 282-1529.)

Moms and Dads! Now you'll have time to browse! **Children's story time** at A Woman's Place Bookstore. (4 pm, Tuesdays, 1431 NE Broadway, 284-1110.)

Debtors Anonymous is a 12-step recovery program for compulsive debtors and overspenders. Using methods similar to Alcoholics Anonymous, thousands of people nationwide have recovered from the disease of compulsive debting. (7-8 pm, Thursdays, Live and Let Live Club, 2403 SE Ankeny St., Jeff, 635-1592.)

Parents and Friends of Lesbians and Gays (PFLAG) meets on the fourth Wednesday of the month. (Marge, 233-5415.)

The **Portland Lesbian Choir** is open to all women. Accompanists, musicians, songwriters and enthusiasts are encouraged to join. (6 pm, Sundays, 2nd floor, YWCA, 1111 SW 10th Ave., Cathryn, 239-7716.)

SPIRITUALITY

United Methodists for Gay and Lesbian Concerns (Affirmation) meets monthly for potluck and fellowship. (Affirmation, PO Box 12673, Portland, Ore. 97212, Paul, 287-6719.)

A **Gay Wiccan Support Group** is forming for men only but not gays only. Learn about earth's energies and nature spirits, find and create male mysteries, support each other in learning about withcraft and divination. (Raven, PO Box 40533, Portland, Ore. 97240.)

Affirmation is a social and support group for lesbian and gay Mormons, their families and friends. (Portland/Vancouver Group, PO Box 2917, Vancouver, Wash. 98668, [206] 696-9396.)

Healing Crystals offers a variety of workshops throughout the month led by Jaime Schelz: Shamanic Drumming Journey I and II, March 25; Journey to Meeting One's Guides, March 23; Mask Making, March 26; Introduction to Crystals, March 16 and 18; Chakra/Aura Awareness and Chakra Charging Meditation, March 19; Women's Journal Sharing, March 27; Dreaming Ourselves Awake, March 29, 31; Using Crystals for Personal Healing, March 18; Sunday Meditations, 1-2 pm; Tarot readings by appointment. (8215 SE 13th Ave., 234-2224.)

Learn to consciously channel with Aaron Heart. Begin to connect with your own higher self and the light thereof. Groups and private instruction are offered on an ongoing, never-a-fee basis; donations accepted. (226-4362.)

A **women's meditation group** meets weekly; no longer at Crone Magic. (Jules Pearl, 223-2468.)

Sisterspirit events

Thursday, March 3: West-side discussion group on New Age and shamanism. (7430 SW 172nd Ave., Aloha, Sallie, 591-7008.)

Saturday, March 5: Information table at International Women's Day. (PSU, Smith Memorial Center, Frodo, 282-8615.)

Monday, March 7: Womantribe dance workshop. (2-4 pm, Echo Theatre, 1515 SE 37th Ave., 282-8615.) Sisterspirit seder planning meeting. (7 pm, Shulamit, 232-8237.)

Wednesday, March 9: Spring equinox ritual planning meeting. (7:30 pm, 282-8615.)

Sunday, March 13: Jewish women's group meets. (232-8237)

Monday, March 14: Wiccan discussion group meets. (234-3599.)

Tuesday, March 15: Christian communion. (7:30 pm, Frodo, 282-8615.)

Thursday, March 17: West-side discussion group. (7430 SW 172nd Ave., Aloha, Sallie, 591-7008.)

Sunday, March 20: Spring equinox ritual circle. (6 pm, Echo Theatre, 1515 SE 37th Ave., 282-8615 or 234-3599.)

Saturday, April 2: Seder. (Shulamit, 232-8237.)

Sunday, April 3: Easter sunrise celebration. (Frodo, 282-8615.)