

just health

Legislative evaluation: Part 2

On labor, environment and social issues, ratings range from Sen. Frank Roberts' strong showing to Sen. Mae Yih's "get a job" approach.

BY DR. STEVEN BAILEY N.D.

I wrote an earlier article commenting on the specific actions of House and Senate committees on Human Resources and Labor. With this article, I will attempt to give a rating to all 92 members of the past legislature. My evaluation will focus on the areas of health, labor, handicapped issues, environment and other social and personal concerns. While it is difficult to produce an entirely objective scale for evaluation, I have incorporated my own records as well as conversations with lobbyists for public interest groups.

Starting with a high of plus two to a low of minus one, my ratings are as follows:

The Senate:

+2: Senator Bradbury (especially strong in workers' issues and alternative choice), Senator Cease (strongest in womens' issues), Senator Cohen

(strong in womens', environment, and social areas), Senator Larry Hill (strong in handicapped and labor issues), Senator Kerans (womens', labor and social issues), Senator McCoy (strong in nearly all areas), Senator Roberts (with Senator McCoy, one of the strongest over-all Senators in all social areas).

+1: (this is a good rating but reflects that these Senators didn't actively push social issues)

Senators: Dukes, Frye, Hamby, Jim Hill, Kitzhaber, Otto, Ryles, Trow and Wyers

Neutral: (nothing to be proud of but did not lead major obstructionist legislation)

0: Senators: Brenneman, Brockman, Hannon (strong on handicapped issues), Houck, Jernstedt, Kennemer (strong in health care issues), Kin-



tigh, Meeker, Monroe, Simmons, Thorne and Timms, also Senator Ryles' replacement, Senator Bloom

-1: Senators: Olson (while a good record in handicapped issues, this could not pull the Senator out of his negative work in womens', environment, personal choice and alternative health care), Yih (Albany has its own breed of Democrat. Senator Yih seems to think that all problems can be solved by "getting a job" and votes against most social issues.)

The House:

+2: Representatives: Baumann (all areas), Carter, Cease, Dix, Eachus, Gold, McTeague, Peterson, Springer

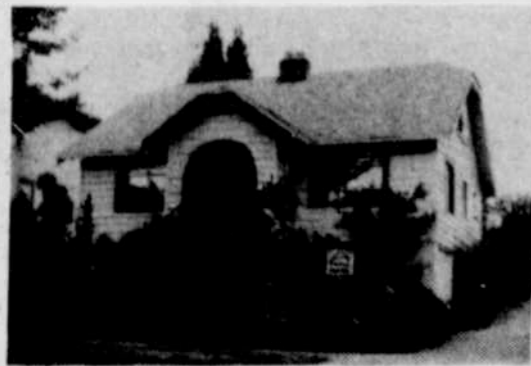
+1: Representatives: Barilla, Bunn

(strong on solar, environment and womens' issues, weak in alternative health care), Burton, Dwyer, Fawbush, Ford, Hammerstadt, Hooley, Hanlon, Hosticka, Hugo Mason, McCarty, Sowa, VanVliet and Katz

Neutral: Representatives: Agrons, Brogoitti, Butsch, Campbell, French, Gilman, Gilmour, Hanneman, Hayden, Johnson (good handicapped/terrible labor), Jolin, Jones, Jones, Kopetski, Markham, Miller, Minnis (good handicapped and alternative health care, poor most other areas of social legislation), Norris, Parkenson, Phillips, Pickard, Roberts, Saylor, Schroeder, Shiprack (very poor labor), Sides, Trahern, Van Leeuwen (excellent handicapped), Whitty and Young.

-1: Representatives: Anderson, Bellamy, Calouri, Kotulski (almost created a -2 category), Schoon

While some of my professions' best friends are rated as neutral, this reflects an evaluation based on a much broader range of votes. Legislators may have strong points in areas outside of labor and social concerns which would not be indicated in the above rating.



68,000 Entertain in Elegance
65,900 Reduced to Sell

Art Deco Paradise — Stunning Open Kitchen. 2 Brm, Redecorated with exquisite taste. Everything is New; Plush WW carpeting, Gas Furnace and H2O Tank, 200 amp service, Range w/grill top, Hot Tub w/gazebo effect and 1100 sq' deck. Built-in speakers, storm windows and an Alarm System. Entire upstairs is MBR with All Brass Accessories and a raised Built-in Bed.

\$32,950 Restored Victorian

3 Brm, 2 Bath, Den on First Floor. High Ceilings. Natural Woodwork. New Gas Furnace and H2O Tank, Storm Windows and New Gutters.

\$29,950 Cute Cottage

Fresh and clean, move right in. Lots of windows, super for plants. French Doors into splendid Bedroom with Built-in Bookshelves. Fantastic Lot with Flowers Galore and Garden Area. Seller will help with financing.

\$24,500 Just Listed — Super Starter

2 Brm, 1 Bath. New Paint, Carpet and Vinyl Throughout. Built-in Hutch in Dining Room. New Gutters, Storm Windows and Wood Siding. Roof 2 yrs old.

Now's The Time To List Your Property!

Call now for your Free Home Analysis. A member of Oregon Multi-Listing Service and The Portland Board of Realtors.

Scott Bottaro 230-0429

**BRIDGETOWN
REALTY**

2305 N.E. Broadway
Portland, OR 97232
287-9370

"Move on up to Professionals 100
... You deserve the best."



Kathy Tysinger

287-8989 665-2936

- Residential, HUD Properties, Business Opportunities/Commercial.
- Free consultation: The Buying Process, Earnest Money Agreements, Competitive Market Analysis, Financing.
- Buying or Selling.
- City or Country.

"Professional and Quality Service
for your special needs."

PROFESSIONALS 100

Professionals 100 Inc. Realtors
2100 N.E. Broadway Suite 2-A
Portland, Oregon 97232
287-8989

Personalized Loan Services
Designed to Meet Your
Special Needs

WARREN E. OSTER

2140 SW Jefferson, Suite 100
Portland, OR 97201

OFFICE (503) 274-4028

RES (503) 297-6769

MOBILE (503) 781-2404



**W. E. OSTER
MORTGAGE
SERVICES, INC.**



**2425 NE 32nd Avenue
DOLPH PARK**

A beautiful quality of space and light welcomes you into this carefully renovated and tastefully decorated Dolph Park home. This home has arched leaded glass windows, French doors, vaulted ceilings, hwdwood flrs, gracious custom kitchen, prof. designed garden, brick courtyard and perennial borders, 2+ bdrms, tiled bath, dble garage, new furnace, updated plumbing, excellent condition throughout. \$89,900. Call David or Marlene, 287-3330.

Lots of room for the money in 5+ BR bungalow Formal dining, fireplace in LR, more than 2100 sq. ft. plus full basement! Owner offers terms!

Priced at \$54,950.

SHELTER
SHELTER PROPERTIES CORP. REALTORS

Logo was blue didn't start



Call Susan Will, sales associate

635-6211 (office)

635-1086 (evenings)