

7 SATURDAY

Women who want to quit smoking can attend a free, introductory seminar, sponsored by **BreatheFree**, at 10 a.m., 1 p.m. or 3 p.m. in room 510 of the Galleria, SW 9th and Alder. Feel free to bring your cigarettes.

Come dance to the swinging band *Sister Tomato* from 8:30 to 12:30 at **Reed College Commons**. There'll be tangos, waltzes, swing, hot jazz and blues from the 30s and 40s. Come hear songs like *Don't Mean a Thing If It Ain't Got That Swing* and *Stormy Weather* played with spice by one of Portland's top Women's bands. Don't miss the Dance of a Lifetime. Wheelchair accessible and signed for the hearing impaired. Cover charge is \$3.50 and \$1.75 for Reed students. Be there or be ketchup.

Windfire, a support group for gay, lesbian and bisexual youth, meets at 2:30 p.m. in Old Wilves' Tales banquet/meeting room, 1300 E. Burnside.

9 MONDAY

Women who want to stop smoking can begin with a free introductory seminar, sponsored by **BreatheFree**, at 10 a.m., 2 p.m., 6 p.m. or 8 p.m. in Room 510 of the Galleria at SW 9th and Alder. Feel free to bring your cigarettes.

10 TUESDAY

Auditions for *Everything in the Garden* by Edward Albee will be held Tuesday. The production will be directed by Jerry Leith and will run from May 25 to June 30. Call Portland Civic Theatre for details, 226-3048.

11 WEDNESDAY

Gay Males Together (GMT) meet at 7:30 p.m. at the PSU Smith Center, room 229, to provide a forum to discuss issues of importance to gay men.

13 FRIDAY

Echo Theatre presents its first annual *Choreographers Showcase* at 8 p.m. at 1515 SE 37th Avenue. In the spirit of supporting Portland's talented artistic community the **Echo** is featuring the works of several local choreographers. Tickets are \$3.50 at the door.

Portland artist *Ronna Neuenschwander* will give a slide presentation and talk about her recent adventures in Timbuktu at 7:30 p.m. at Northwest Artists Workshop, 522 NW 12th. Ronna's experience and research in Timbuktu focuses on the Salt Camel Caravans, following the salt trade through Timbuktu through Mali, one of the last remaining camel caravans in the

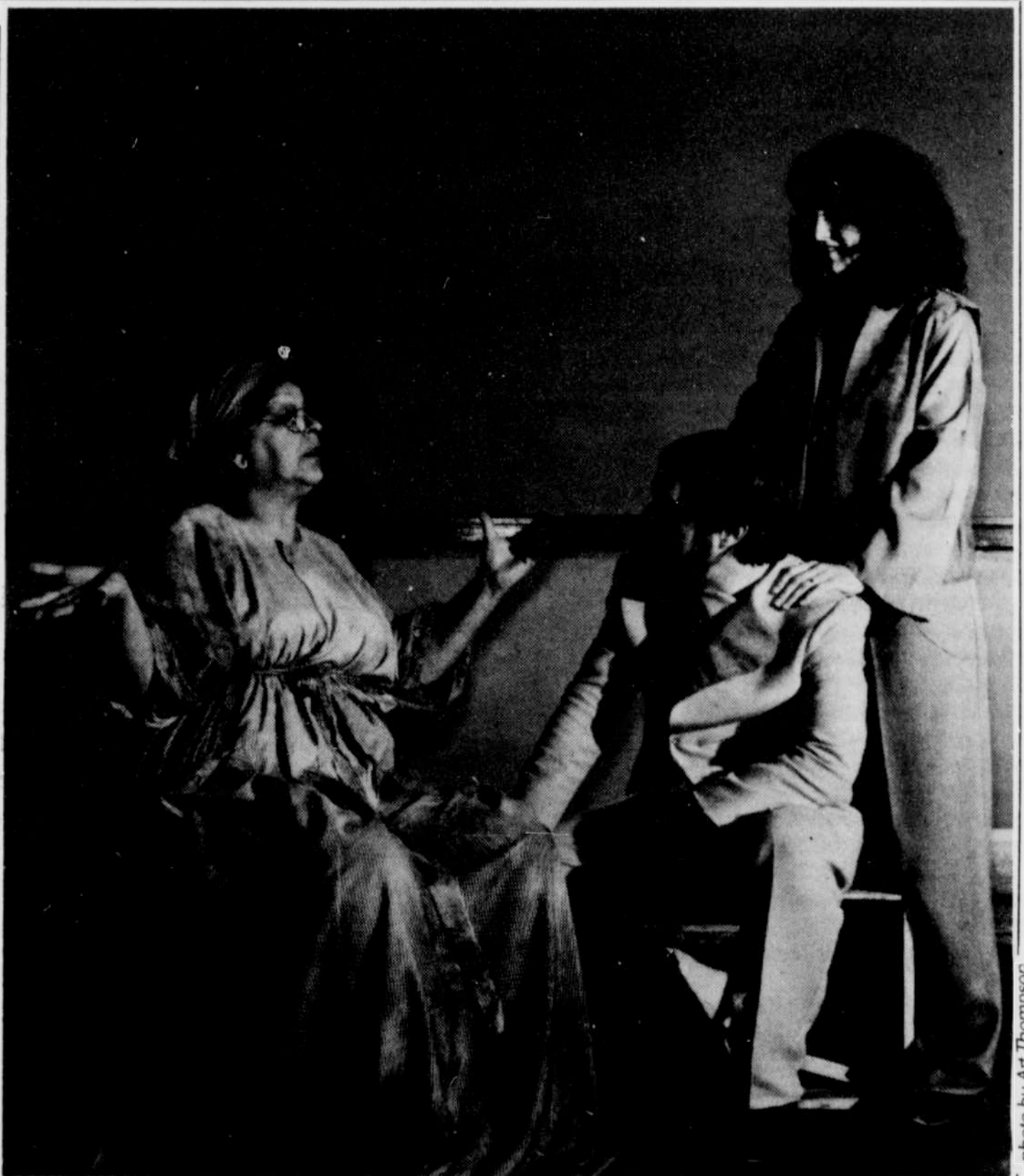


photo by Art Thompson

NW Repertory Company presents *1984* opening April 4. From left, Anna Donner as the landlady, Bill Merkins as Winston and Karen L. Hallmark as Julia.

world. Admission is \$3.50 and \$2.50 for NAW members. A reception will follow the presentation.

The Kathleen Tracy Band, a Seattle based women's group, is coming to Portland. **Judy's**, 1431 N.E. Broadway, and Strega Productions present two concerts, April 13th and 14th. The shows start at 8:30 p.m. Admission will be \$3.00.

The band is promoting their premiere tape release, "Signature" which will be available at the concerts.

Kathleen and her band combine original ballads, R&B, quasi-country and rock to produce a unique sound. Their tunes are upbeat, poignant and hard hitting. None are disappointing. Don't miss this opportunity to hear a versatile and talented women's band!

14 SATURDAY

Northwest Artists Workshop and **Virginia Cafe** are collaborating on a "Buck Day" on Saturday, from 2 until 8 p.m. The day is centered around a *Napkin Art Contest* with over \$500 in prize money.

Artists and hopefuls are encouraged to bring their pens and pencils and try for the prize money. Each hour there will be a "quick sketch" competition, with the winning entries judged against each other at the end of the day. Prizes in this category are \$150 for first place, \$50 for second place, and \$25 for third place. For the hardcore entrants who want to drink and draw all day long, there is an "unlimited time" category with prizes set at \$200 for first place, \$75 for second place, and \$25 for third place.



Meg Christian will be performing at the NW Service Center, Saturday, April 21st at 8 p.m. Seating is limited to 1000 people. See **Just Entertainment** for more information.