



JACKSON AND JOSEPHINE COUNTIES.

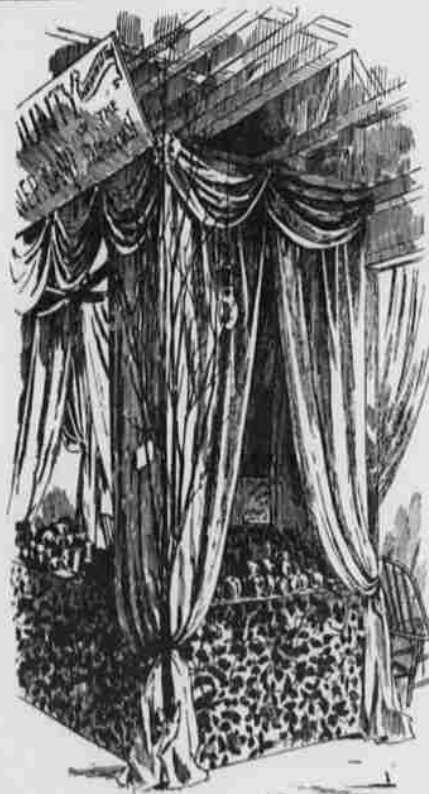
that was promised in the announcement that the music would be the best to be obtained in the country has been fulfilled. Every afternoon and evening the band plays in the spacious and beautiful music hall, and thousands go to hear it who find it the greatest attraction of the many to be found there. It is well worth a visit to the city just to hear this superb band.

In examining the fair in detail one is impressed first by the great number and variety of the exhibits, second with the taste displayed in their arrangement in an attractive form, and third in the grand total of wealth, business and industry they represent. This latter idea grows upon one as he passes from one department to another, until he is at last fairly astonished by it. Millions upon millions of dollars are represented by the products and objects contained within the walls of that great building. There one can see not only the enormous possibilities of our soil, our forests, our mines, our commerce and our manufactures, but obtain a fairly accurate idea of what development of these great resources has already been accomplished. Such displays as enable one to acquire this knowledge are certainly the most interesting to the visitor and beneficial to the country; yet it does not follow that exhibits of fine merchandise and manufactures that have been imported from distant regions are not both interesting and beneficial. They give one an insight into the enormous wholesale and retail trade of the city, and indicate the wealth and refinement of the people, the immense industry and the growing development of the country that calls for them and can support the great business houses that deal in them. They are tangible proof that Portland has commercial establishments equal in the amount of capital invested and business transacted to the large cities of the east. Such large retail houses as Olds & Summers, Dayton, Hall & Avery, Golden Rule Bazar, E. H. Behlow, Rummelin & Co., Olds & King, F. R. Chown, Dekum Bros. & Co., J. F. O'Reilly, J. K. Gill & Co., Stuart & Thompson, S. Lipman & Co., The Brunswick-Balke-Collander Co., Hoyt & Co., B. W. Fisher,

novel and brilliant. Nothing at all comparable to the effect produced in this great hall has ever been seen in the west, and it would be difficult to improve upon it. The same can be said of the music of Liberati's celebrated band. The management has shown great wisdom in securing music equal to the best ever offered the patrons of any exposition in the United States. There has been no cheap claptrap in this matter, nor in any other. Nothing has been done for advertising effect alone. All

Rosenthal's, S. & G. Gump & Co., Sanborn, Vail & Co., Japanese Bazar, H. T. Hudson, H. F. Gullixson & Co., Webb's Safe Emporium and E. J. Partridge, have exhibits that are a fair index of the enormous retail business of the city, as well as a proof of the fact that the trade of the northwest demands the very best articles in every line of manufacture.

As before stated the chief interest centers about those displays that show the products and industries of the northwest, and it is from the exhibition of these that the most permanent benefit will flow. Foremost of these are the displays that show the agricultural and horticultural products. At a glance one can see why it is that Oregon has become famous for her grains and fruits, for here are to be seen in variety an excellence such as can not be matched elsewhere such products as would cause Ceres and Pomona themselves to gaze in wonder. The Oregon Immigration Board, which, as before stated, is maintained by the business men of Portland, has made a display of the grains and grasses of the state that is simply astonishing in its quality and diversity, and most artistic and attractive in its arrangement. This is particularly shown in the colored engraving on the last page. This exhibit alone shows that the board is working for the benefit of the whole state, and should help materially in the cause of strengthening the fraternal bonds between the city and country. The Northern Pacific railroad has also a superb display of agricultural, horticultural and forest products, most invitingly arranged, representing both Oregon and Washington. Information bureaus are maintained by both the immigration board and the railroad, the former being in the grain pagoda shown in the engraving. Benton county makes a splendid showing of its resources, and one that attracts marked attention. To this county, also, should be credited the fine display of products from the experiment farm of the Oregon Agricultural college. Among other things shown by the latter are 425 distinct varieties of potatoes. This display would be more valuable if each sample was accompanied by some data as to its characteristics and yield. Clackamas county owes much to Mrs. P. M. Rinearson, who has placed on exhibition from her own farm and orchard in that county such a splendid collection of fruit, vegetables, etc., as has probably never been exhibited by one individual before. She has been awarded the sweepstakes prize. Wasco county fruit is, on the whole, the most tempting and satisfactory display of all. For grapes, apples, etc., Wasco stands in the front rank of the state, and the fruit industry is becoming most important there. J. H. Settlementier, the well known proprietor of the Woodburn nursery, in Marion county, also makes a most tempting display of fruit, which is a most effective argument in favor of buying home grown trees that are acclimated and of varieties whose producing and other qualities are known. Every orchard set out should be of native trees to secure the best results. Southern Oregon, so often called the "Italy of Oregon," gives ample proof of the appropriateness of the title in the long tables of fruits, vegetables, etc., from Jackson and Josephine counties. With its almost semi-tropical climate, its fertile soil and its beautiful scenery, the Rogue river valley may well be called an earthly paradise. Other counties in the state are well represented in the general collection of exhibits by the immigration board. Clarke county, Washington, lying just north of the Columbia, is taking a prominent place in fruit culture. It is represented by a splendid exhibit of fruit.



FRUITS FROM CLARKE COUNTY, WASHINGTON.

The second most valuable portion of the display is that which gives us an idea of the nature and extent of our local manufactures, and it can but be regretted that these exhibits are not more numerous and complete. Manufacturing is never a pioneer industry, but follows in the wake of development. The manufacturing era has come,



IN THE STOCK SHEDS.