

THE WEST SHORE.

VOL. 6—No. 9. { L. Samuel, Publisher,
5 Washington St.

Portland, Oregon, October, 1880.

Per Annum, { Single copies
\$2.00. { 25 cts.

OUR EDUCATIONAL INSTITUTES.

In THE WEST SHORE for September we furnished our readers a most excellent view of the State University at Eugene City. We now present THE AGRICULTURAL COLLEGE at Corvallis, an institution possessing a thorough corps of professors, among whom we are pleased to notice, B. L. Arnold, President; Jos. Emery, Prof. of Mathematics; B. J. Hawthorne, Prof. of Languages, and E. B. McElroy. The college is beautifully located in the thriving city of Corvallis, in the very heart of the Willamette valley, and is connected by rail with Portland, as well as the principal towns in Washington, Yamhill, Polk and Benton counties.



OREGON AGRICULTURAL COLLEGE AT CORVALLIS.—Photo by Dr. Heslop.

Corvallis has regular steamboat connection with Portland and all the towns lying on the banks of the Willamette river—in fact, no better spot could possibly have been selected for an agricultural college. A well conducted ex-

perimental farm adjoins the College grounds. There are at present 57 agricultural students enrolled—the law, however, provides for the free tuition of 60 scholars. The total number of students enrolled is 160, of which about

the school as it now exists; for though closely connected by sympathy of design with Mrs. Brown's school, there was no legal connection between the two.

It is now more than thirty years since

50 are young girls, between 13 and 18 years of age.

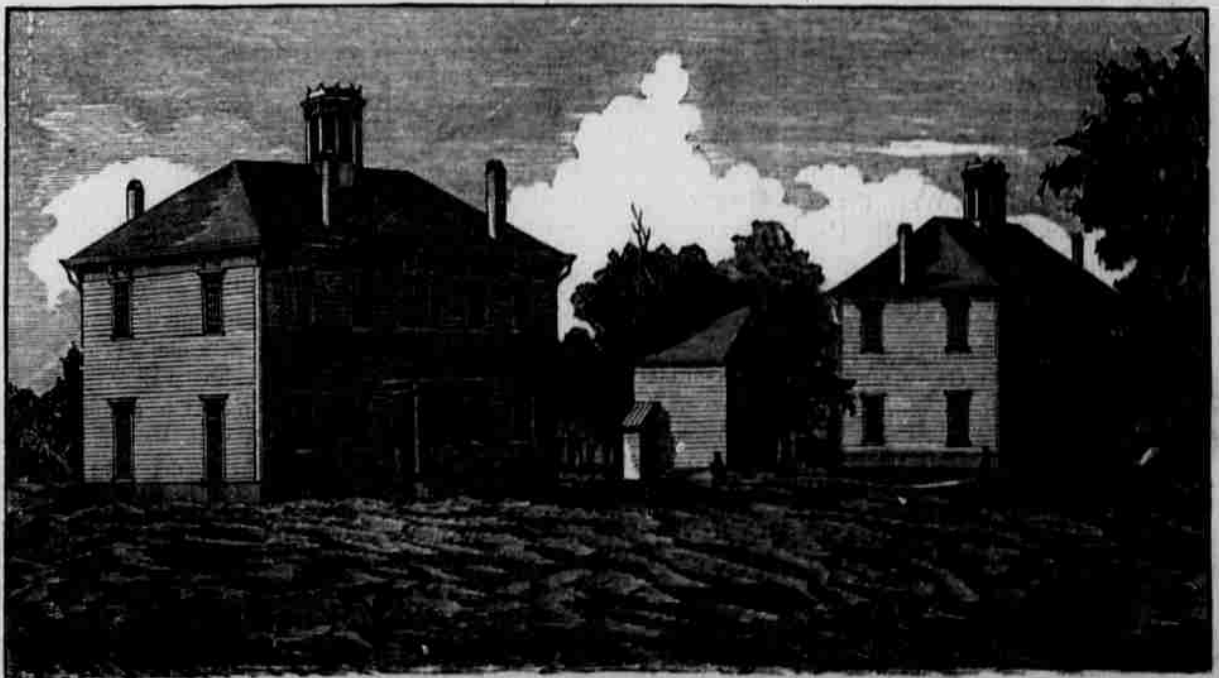
The fee for paying students is from \$16 to \$30 per year.

PACIFIC UNIVERSITY, FOREST GROVE.

The germ of this institution was a boarding school established by Mrs. Tabitha Brown, nearly thirty-five years ago. With very inefficient materials, and often under the most discouraging circumstances, this pioneer educator of the "Plains" clung to her design of establishing a permanent center of religious and social influence for this community.

The next stage in the growth of the institution was due to Rev. Harvey Clark.

He was the real founder of



PACIFIC UNIVERSITY AT FOREST GROVE, OREGON.—1880. Photo by Robert Shines.