

lighted and ventilated.

A hot water apparatus furnishes heat of the most salubrious character and the combined system of ventilation is none the less perfect.

NORTH SCHOOL.

The block on which this is located, No. 80, Couch's Addition, cost \$4,522.

In '67, Messrs. Goodnough & Clarke erected the original building for \$12,816. Two wings were added in

1877 at a cost of \$4,121. School was first opened Feb. 10, 1868; G. S. Pershin as Principal and Misses Way, Northrup and Polk as assistants.

The building is now a 12-room structure, with seating capacity of 600.

PARK SCHOOL.

This is the most complete school building in the city. It is not ornate, nor specially showy, but its internal arrangement is quite perfect. It occupies a full block of ground that cost \$12,100. It was erected in 1878-79, by

J. M. Caywood, at a cost of \$29,700.

It has twelve rooms, with seating capacity of 650.

The High School occupies the upper floor, and some grammar classes the lower floor. Its light and ventilation are quite satisfactory.

Both this and the Harrison St. building are finished throughout with Oregon ash.

The growth of the schools was quite slow for some twelve or thirteen years from 1858. There were 111 present

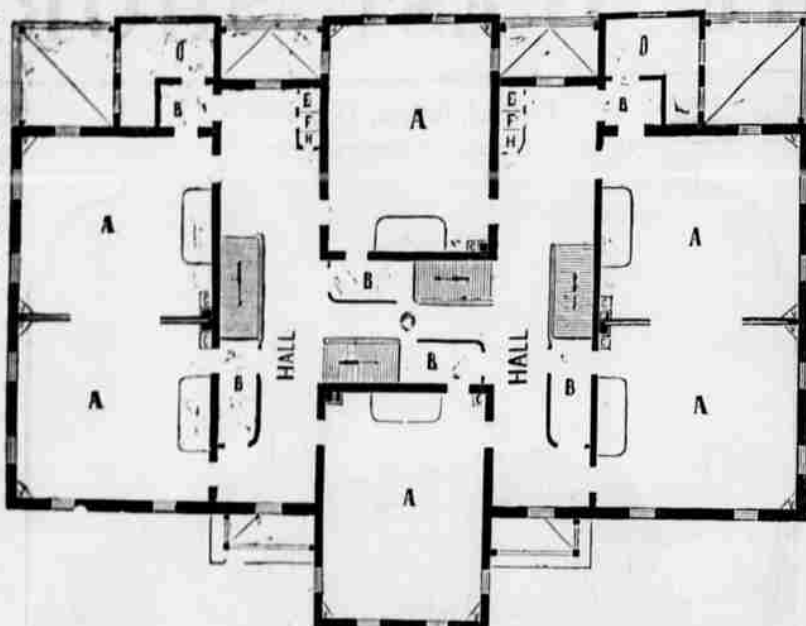
the first day 22 years ago. Today, there are about 1900. Then there were three teachers; now, 46. It is conjectured that every spare room will be occupied next year and during the year following, at farthest, (1882,) another building will be needed.

But the good judgment of the people, combined with their liberality, will, no doubt, make timely provision for these vital in-

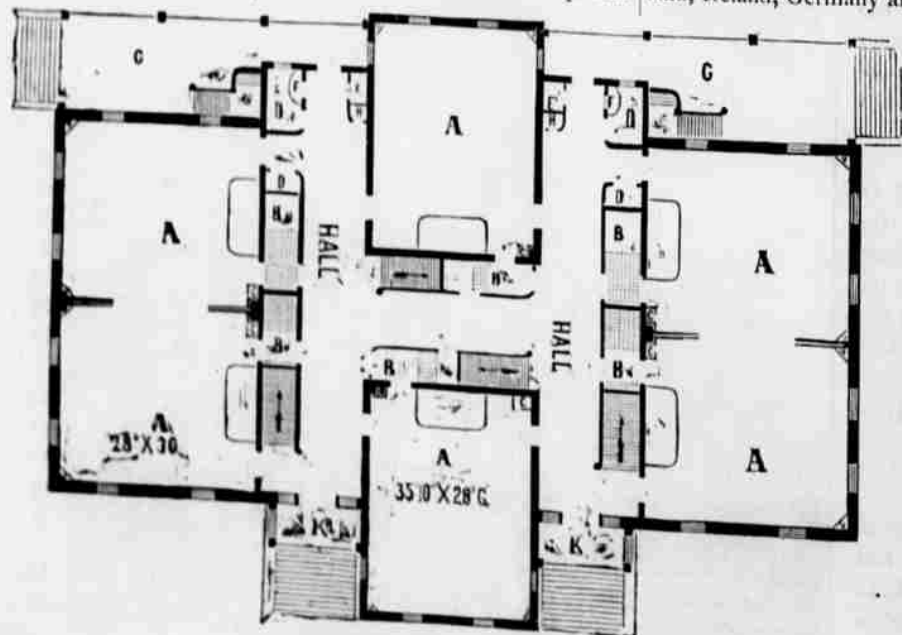
terests. We say again, we are justly proud of our school buildings.

OUR PROSPECTIVE MEN AND WOMEN.

Another census is upon us, and it has been predicted some months in advance that the grand total will show that we have a population within our borders of more than forty millions. The unprecedented tide of humanity now pouring into the Atlantic seaports from England, Ireland, Germany and France, is



PLAN OF SECOND FLOOR PARK SCHOOL, PORTLAND, OR.
Lettering of Rooms same as on First Floor.



PLAN OF FIRST FLOOR, PARK SCHOOL, PORTLAND, OR.
A. School Rooms. B. Hat Room. C. Teacher's Closet. D. Storage Closet. E. Hoist. F. Wash Basin. G. Rear Porch. H. Hose Closet.
K. Front Porch. O. Office or Library.