

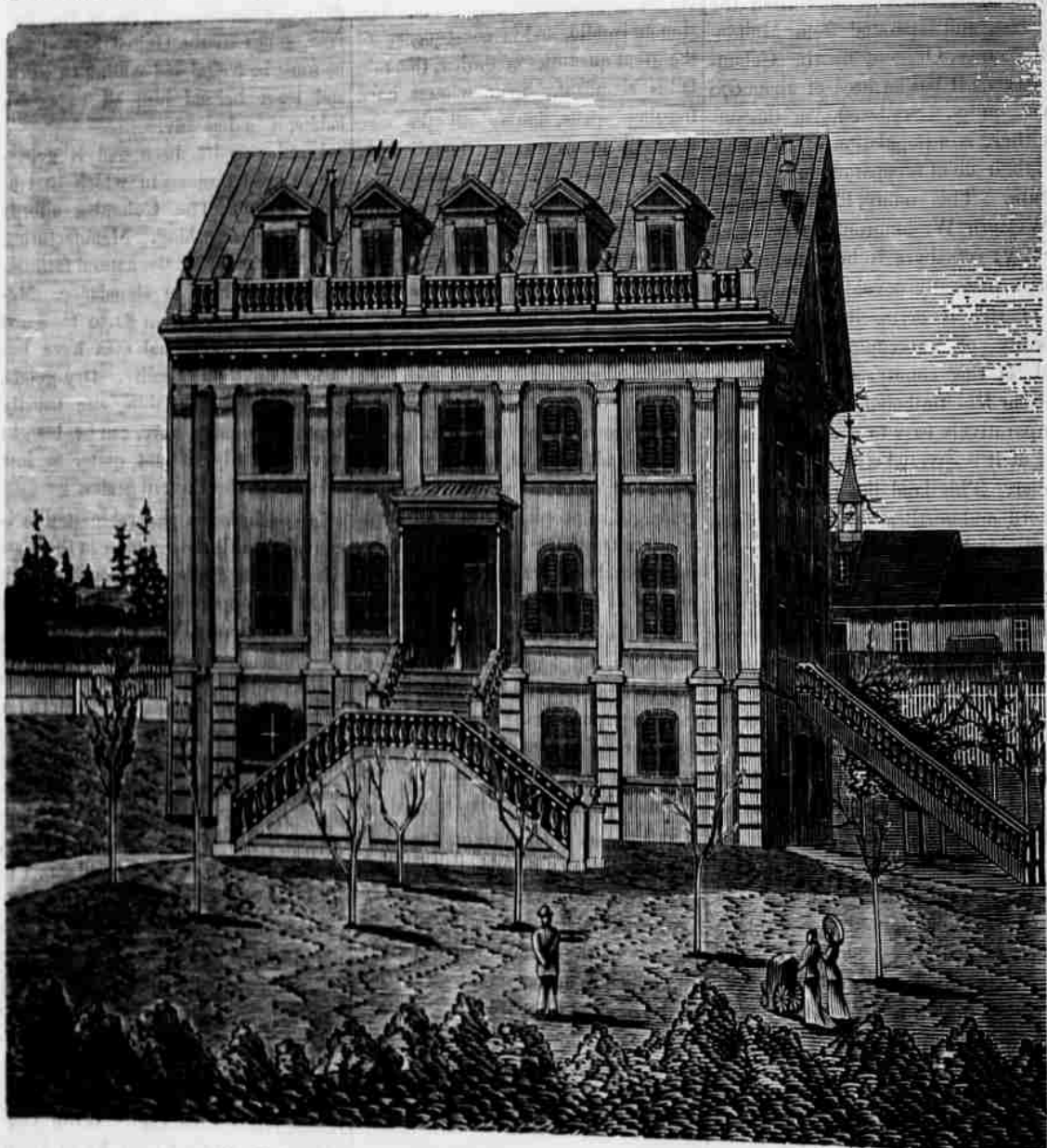
SAINT ANN'S CONVENT.

This institution is located at Victoria, having branches at New Westminster and Nanaimo, an orphanage at Cowichan, B. C., and a hospital at Victoria. Thirty-three sisters are in charge of the different branches. The Victoria Convent was completed, as shown in the engraving, in 1872, at an expense of

OUR COMMERCIAL AND INDUSTRIAL STATISTICS.

The wheat and flour exports of this State for 1879 are valued at \$5,350,000, an increase of nearly \$100,000 over 1878. The value of exports of green apples, dried fruits, potatoes, pork, beef, salmon, hops, butter, eggs, etc., is estimated at about \$3,000,000. Ore-

rel; lowest, \$4.75. Oats, highest, 47½ cents per bushel; lowest, 43 cents. Choice Wool, highest, 25 cents per lb.; lowest, 18 cents. Bacon, sides, highest, 12½ cents per lb.; lowest, 9½ cents. Hams, highest, 15 cents per lb.; lowest, 12 cents. Shoulders, highest, 9 cents per lb.; lowest, 7½ cents. Eggs, highest, 40 cents per dozen; lowest, 16 cents. Butter, highest, 40 cents per lb.; lowest,



ST. ANN'S CONVENT, VICTORIA, B. C.—FROM A PHOTO BY R. MAYNARD.

nearly \$30,000, including the St. Joseph Hospital. The Convent itself is really only a wing of the original plans. These, when carried out, will make the total cost of the improvements come up to about \$50,000. At present 140 scholars attend the Victoria school, whilst over sixty orphans find a pleasant home at the orphanage.

gon's total taxable property amounts to \$46,370,673. Washington Territory's taxable property is \$21,021,832. Produce in shipping lots ranged at the following prices during 1879: Wheat reached its highest price during November and December, \$2.00 per cental; lowest during August, \$1.55 per cental. Flour, highest, \$6.00 per bar-

rel; lowest, 12 cents. Hides, highest, 19 cents per lb.; lowest, 12 cents. Potatoes, highest, 80 cents per bushel; lowest, 30 cents. In 1861 Portland had a population of 2,910; in 1864, 5,816; in 1870, 9,565; in 1875, 13,470; in 1879, 20,571. The cost of buildings erected, and improvements to buildings, made in Portland and East Portland during 1879, amount to \$1,252,650.