

## SALEM.

Salem, the capital of Oregon, of which we give a bird's-eye view in this number of our paper, is situated on the Willamette river, in the heart of the Willamette valley, fifty miles south of Portland, and about the same distance east from the Pacific ocean. Our engraving, good as it is, but faintly represents the beauties of its location and surroundings. It occupies a plain, with a gentle slope to the river; is backed and surrounded by a country beautifully diversified with woods, improved farms, and open prairies, skirted with hills both

picturesque and tillable. It fronts the river and the handsome range of cultivated highlands known as the Polk county hills; has wide and handsome streets, with good sidewalks, and long lines of shade trees; two public squares, and a beautiful stream of water running through it, furnishing immense water-power.

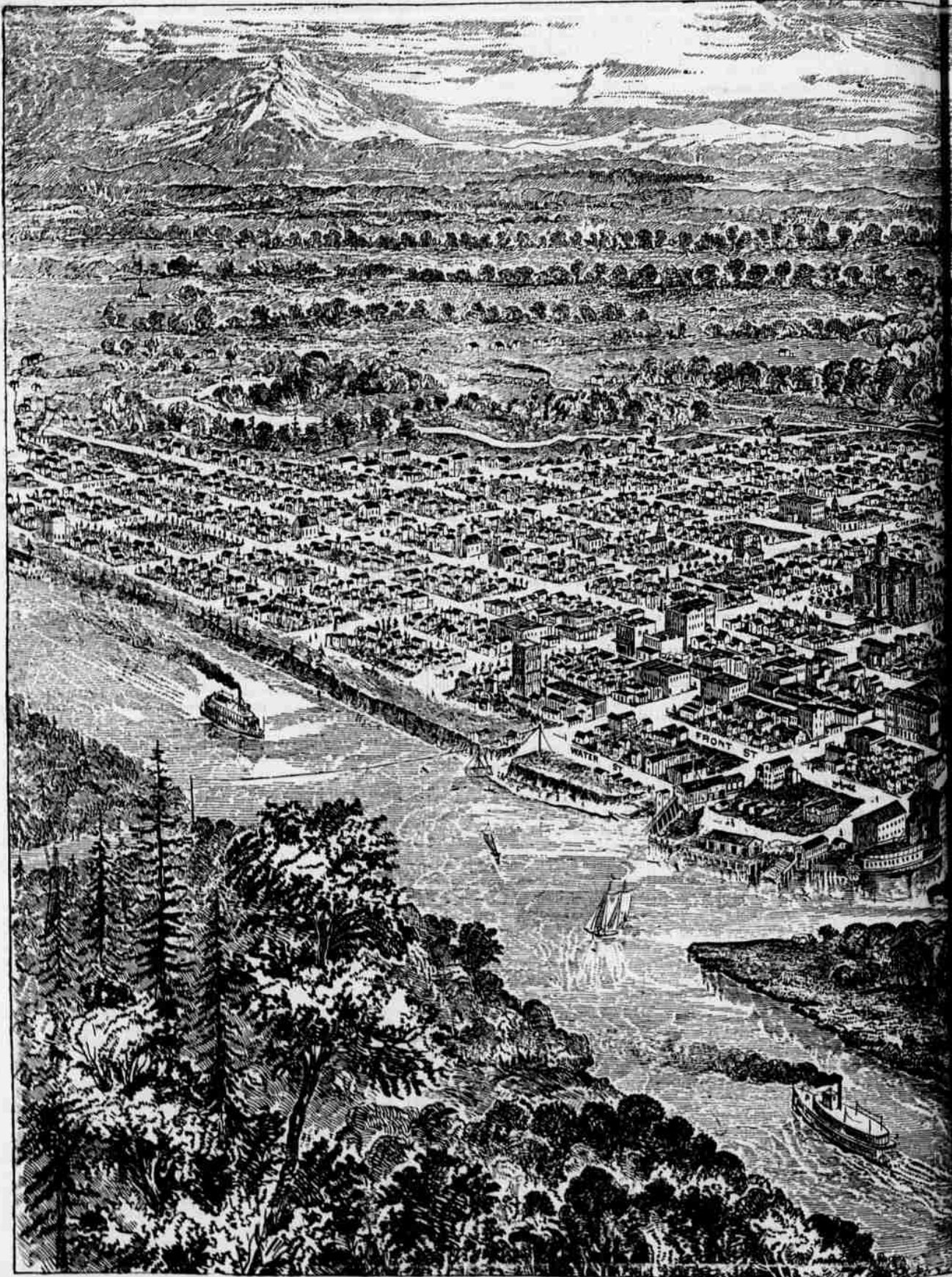
Salem is emphatically the city of churches, having twelve different church buildings, in a population of 4,500. The Capitol building, not yet completed, is a fine structure, which will cost, when completed, \$750,000. It has a handsome Court House, costing \$110,000;

five free school buildings; and is also the seat of the Willamette University, a very prosperous institution, under the direction of the Methodist Church, and of a Catholic Female Seminary of considerable importance.

Salem is well adapted to manufactures, from the abundance of water power obtained by connecting Mill creek with the Santiam river, by means of a canal several miles in length. Formerly the second largest Woolen Mill in the State was located here, but was destroyed by fire, and has not yet been rebuilt. At present its chief manufactures consist of our merchant Flouring

Mill, with a capacity of 800 barrels per day; one custom Flouring Mill; one Saw Mill, capacity 25,000 feet per day; one Linseed Oil Mill; two Sash and Door Factories; two Furniture Factories; one Chair Factory; two Foundry and Machine Shops; one Plow Factory; one Bag Factory; one Water Company and Gas Company, and minor enterprises.

By the Constitution of the State, all the State institutions should be located at Salem. At present there are the Penitentiary, and an Asylum for the Deaf, Dumb and Blind, established there. As the State becomes able,



BIRDEYE VIEW OF SALEM, THE CAP.

A. State Capitol. B. Multnomah County Court House. C. Willamette University. D. Academy of the Sacred Heart. E. Public School. G. Waterworks.