

Get your  
**SUN HATS**  
 now. We have  
 the right kind  
 at low prices  
**Netted Gem  
 Potatoes**  
 \$1.00 per 100 lbs.

Camp fires are dangerous---put them out  
 Prompt Delivery and Good Service

**Godward Mercantile Co**  
 Jacksonville, Oregon Phone 74

**PERSONAL SERVICE**

**Look out for Paint!**

Enamel, stains, varnishes,  
 colors in oil, linseed oil,  
 kalsomine, brushes

Clean up and Paint up  
**FICK'S HARDWARE**

**Raise all the  
 Chicks you hatch**

Raise them the Pan-a-ce-a way

Start them right—keep them growing—without any back-set. PAN-A-CE-A gives chicks good appetite and good digestion—gives vigor to resist disease. PAN-A-CE-A prevents food fermentation—that's where most of the bowel troubles start. PAN-A-CE-A prevents and cures gapes, indigestion, diarrhea, leg weakness. PAN-A-CE-A your chicks and then watch them feather. A PAN-A-CE-A chick will out-feather a non-PAN-A-CE-A chick every time.

Dr. Hess Poultry PAN-A-CE-A makes chicks grow.

**Jacksonville Pharmacy**

Tell us how much stock you have. We have a package to suit.

**Dr. Hess Instant Louse Killer Kills Lice**

Wedding Breakfast

**Corn Syrup**

Cane Flavor

White	10 lbs	.80
"	5 lbs	.43
"	2 1-2 lbs	.25
Dark	10 lbs	.72
"	5 lbs	.39
"	2 1-2 lbs	.21

**Basket Grocery**

Think twice; act thrice; before leaving your camp fire

**The Post does all kinds of Job Printing**

Read the Post—an education for  
 the whole family for only \$2.00

**Jacksonville Post**

Friday, April 20, 1923

S P AND H. M. SHUTT, PUBLISHERS

Published Every Friday at Jacksonville, Jackson County, Oregon.

Entered at the postoffice at Jacksonville, Oregon as second-class matter.

ADVERTISING RATES  
 Regular display adv. per inch, each issue ..... 20c  
 Display adv., less than a month, per inch ..... 25c  
 Business locals, per line, each issue ..... 10c

SUBSCRIPTION RATES  
 One Year ..... \$2.00  
 Six Months ..... 1.25  
 Three Months (In Advance) ..... .75

Not in its long history has the town—in the same length of time—received such a "puking" or cleaning out as it experienced last week. Nearly 100 loads of old tin cans and rubbish of all kinds that had been accumulating and rotting in back yards for nearly half a century were hauled to the dump yard. It is to be regretted that many of our citizens refused to comply with the order to clean up their premises, and they will now have to deal with the health authorities on the subject. It is a good law that compels people to clean up—if they are too lazy and "ornry" to do so without being forced.

It seems hard to believe that some people living in towns—those owning property, who should be more interested than anybody else in cleaning up and improving the appearance of the town—refuse to clean up their premises until forced to do so by the health authorities. But the time has come in Jacksonville when owners of property will be forced to clean up, whether they want to or not. In every other town they are compelled to clean up, and why not here?

The front of Fick's hardware store looks better in its new jacket of paint. A number of other fronts on Main street are groaning for a similar dose—and now is the best time to do it. Considering the small expense, nothing on earth so much improves a building as a coat of fresh paint. Try it and see for yourselves.

A government rifle range is being established on the Linn or Caughron place in the mountains one mile west of Jacksonville, for use by the Jackson county national guardsmen.

An exchange prints this rather interesting poem: "Here lies the body of A. Procter, who bumped into a train and couldn't find a doctor."

Better join our chamber of commerce and get in line for the big basket dinner picnic at the auto park Monday evening, April 30.

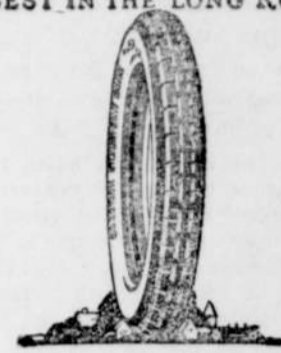
**111 4 more**  
 cigarettes  
**24 for 15¢**  
 THE AMERICAN TOBACCO CO.

**The Place to Eat**

When in Jacksonville take your meals at Mrs. Hunt's restaurant on Main street. Tables supplied with the best the market affords and at reasonable prices. Lunch counter in connection. Short orders. Mrs. E. B. Hunt.

Highest quality jewelry repairing, diamond setting, watch repairing, agate mounting and jewelry manufacturing.  
 Martin J. Reddy,  
 271 E. Main St., MEDFORD, OREGON.

**BEST IN THE LONG RUN**



ANOTHER way Silvertowns save: Their construction gains you more miles from a gallon of gasoline!

**FRED J. FICK**  
 Telephone 13  
 JACKSONVILLE, ORE.

**Goodrich**  
 Silvertown CORD TIRE

**fresh from the factory**  
**FRESH Tuxedo TOBACCO**  
 now 15¢  
 ROLL YOUR OWN WITH Riz La Croix Papers Attached

**YOU** may pay higher prices, but you can't buy better quality or greater satisfaction than you will find in clothes "Tailored to Measure by Born."



The handsome all wool fabrics will delight your eye; you will see evidence of expert tailoring in the finished garments; in the fit, the style, and in the long wear.

Large sales at a small profit per suit, and the remarkable resources of the Born organization, keep production costs low and quality standards high.

We will appreciate  
 your Spring order

**Jacksonville Cash Store**

**F. & E. Theatre, Central Point**

Friday, April 20—Ruth Roland in "The Timber Queen" and "Discontented Wives."

Saturday, 21st, matinee and evening—Wallace Reid in "Across the Continent."

Sunday and Monday, 22-23—Mae Murray in "The Delicious Little Devil."

Tuesday and Wednesday, 24-25—"Brothers Under the Skin."

"Country Store" every Monday night  
 Saturday Matinee—Merchants prize to lucky number  
 Evening prices 10c and 30c.



**Price Advances on May 1**

—2,900 shares now remaining,  
 offered to customers and friends at  
 \$95 per share

**THE CALIFORNIA OREGON POWER COMPANY**

**7% Preferred Capital Stock**  
 Yielding 7.37%

In a few weeks—May 1—the opportunity to invest in these securities at the exceedingly attractive rate of \$95 per share will have passed. The stocks of comparable public utilities on this coast are held at approximately the par value price of \$100 per share. If you want 7.37%—and safety—act at once, while you can still invest at the present figure. Even now our customers and friends are rapidly taking up the few shares still available.

The California Oregon Power Company has shown a substantial growth in earnings resulting from the development of the territory in which it operates.

Between 1912 and 1922, the Company's consumers grew from 6,561 to 13,123, an increase of 100%—and the development of the territory is still in its infancy. In the same ten years the physical properties behind the Company's Capital Stock have increased from \$4,189,325.76 to \$10,293,569.69, which includes seven hydro-electric plants in Southern Oregon and Northern California.

The accompanying chart shows the steadily increased earnings of this Company.

**THE STOCK**

Par value \$100 per share.  
 Dividends paid since issuance, \$7 per share per annum. Checks mailed every three months, \$1.75 per share.

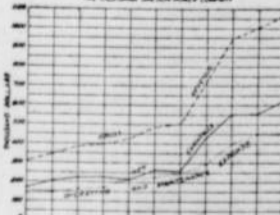
Proceeds of all securities sold devoted exclusively to development of Company's properties.

Not assessable by the Company for any purpose whatsoever.  
 Exempt from Federal Normal Individual Income Tax.

Takes precedence as to assets and dividends over common stock amounting to \$4,441,100 par value. Equity back of the preferred stock now outstanding amounts to a total of \$8,385,361.53, which equals \$288.30 per share, or over three times the present cost of \$95 per share.

Purchase may be made in any amount from one share upwards; cash, or savings plan; \$5.00 per share as first payment, and \$5.00 per share per month. Interest on all partial payments at 6% per annum.

The stock is listed on the San Francisco Stock and Bond Exchange.



**The California Oregon Power Company**

Offices: Medford, Grants Pass, Klamath Falls, Oregon  
 Yreka, Dunsmuir, California

**Price Advances May 1, 1923**

Our partial payment plan of \$5 per share per month enables you to take immediate advantage of the exceedingly attractive price at which this high-grade security is now being offered—\$95 per share in yield 7.37% per annum—well below the price level of comparable hydro-electric securities. The price will be advanced May 1.  
 You may place your order or get full information at any of our offices, or from any member of our organization; or mail in the coupon.

The California Oregon Power Company  
 Medford, Oregon  
 Please have a member of your organization call on me about your 7% Preferred Stock.  
 Name \_\_\_\_\_  
 Address \_\_\_\_\_