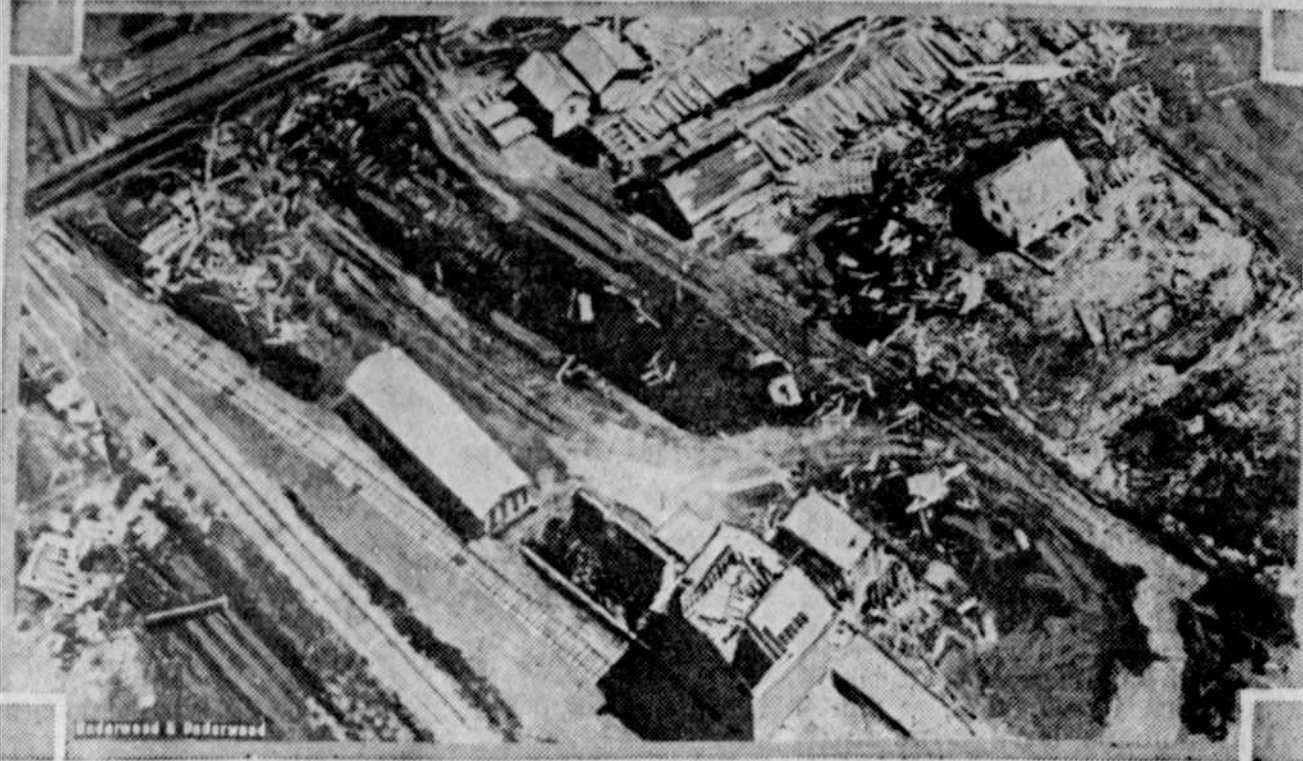
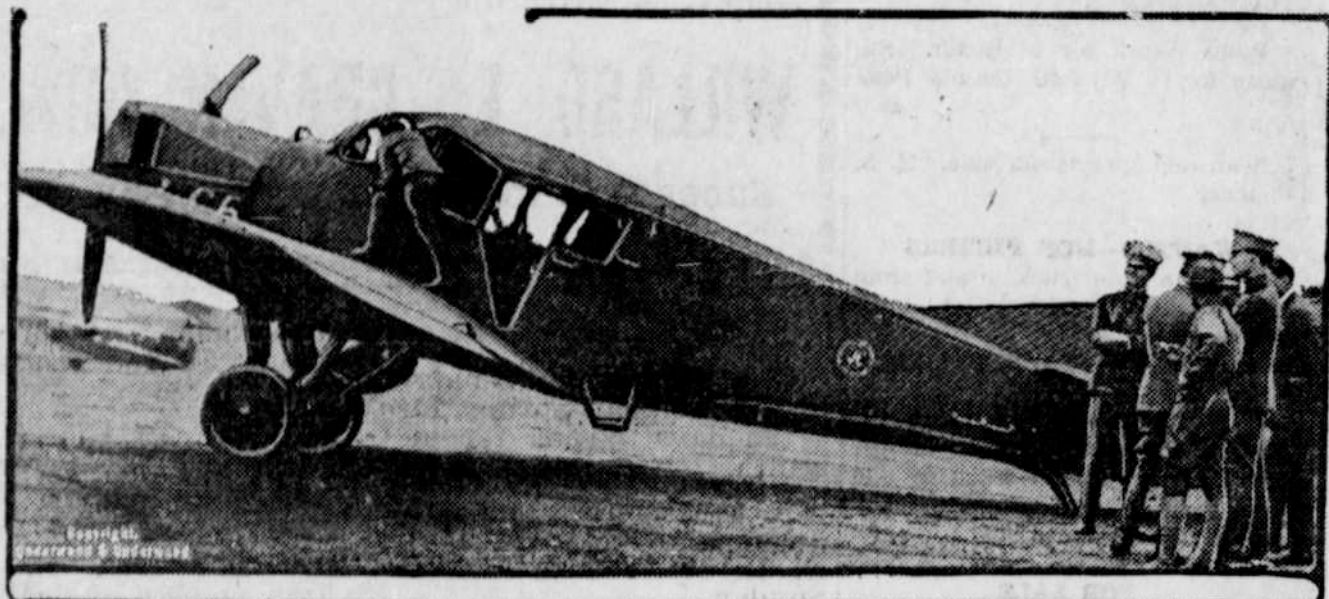


Minnesota Tornado Wreckage Seen From an Airplane



Extraordinary aerial view of the ruins of Everdell, Minn., which was devastated by a tornado recently.

All-Metal Air Limousine Carries Four Passengers



View of the all-metal "air limousine," built and owned by John Larson for passenger service on the Atlantic coast. It carries four passengers and their luggage.

HE IS PUDDLING AGAIN



Sergt. C. L. Dalrymple, Washington policeman for 25 years, most of the time on guard at the White House executive offices, is spending a part of his vacation at his old job of "puddling" in a steel mill. He wanted to see how easy it would be to earn the big wages steel men get today compared to what he received back in the last generation. His friends, however, do not believe he will be lured away from his daily occupation of scanning the faces of White House visitors. He probably knows more public men than any other individual in the country, and has dealt with more cranks than has any other person.

"MY MAN'S GOT IT"



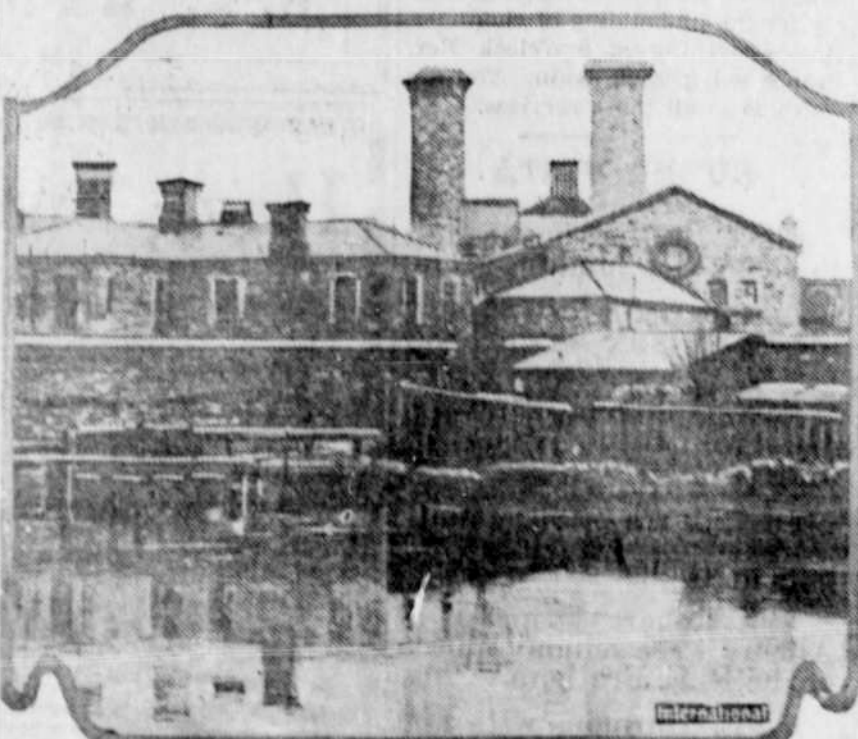
No happier Harding celebrants could be found in the city of Washington the Sunday following the Ohioan's nomination than Inez McWhirter (at the right), the Harding maid and housekeeper, and her bosom friend, Hattie Jeffries, who cooks at the Siamese legation in the same block. Hattie is frankly figuring on Inez's influence to promote her from the diplomatic service to the White House kitchen.

Polish Liberty Bonds Distributed



Eight million dollars in Polish Liberty bonds being removed from the Union Liberty State bank, New York city, for broadcast distribution.

Where Sinn Feiners Are Locked Up



View of Mountjoy jail, near Dublin, in which many of the arrested Sinn Feiners are incarcerated.

Last Night's Dreams

—What They Mean

DANCING.

TO "TREAD THE MAZY" in shadowland; in other words to dream of dancing is, all the seers are agreed, a good sign. Just to dream that you are attending a dance foretells for you success in love and that you will have many friends if, indeed, it does not mean as many think, that you have many now, even if you are not aware of it. You had better join in the dream dance, however, and not be merely an onlooker; for to dream that you are dancing yourself is an omen of many other good things to come. However if you dream that you simply watch the others doing the minuet, fox-trot, valse de court, two-step or other terpsichorean exercise, it is not very bad—it only means that you have gone to bed tired. But to dream that you, yourself, are dancing—then, indeed, are things coming your way.

To begin with, there is the success in love and friendship. If you are unmarried, your sweetheart is kind, true, and will make you an excellent wife. If you are married, the dance of dreamland means an increase in the family. Also, all the authorities agree that for the dream dancer, there is a legacy impending. Some say a legacy is "probable," but most say that it is sure, and many declare that it will come from an unexpected source. To those in trade, the dream dance means increased profits, and from the present cost of things it is quite evident that many tradesmen have dreamed this dream of late.

To the sailor to dream of dancing foretells a pleasant and successful voyage, and to one and all it foretells good news from a long-absent friend, or from a distant country. Just one caution. Be careful how you dress yourself for your dance of dreams; for if you wear dancing tights, while all the other good things may come to you, you will be temporarily short of money.

(Copyright)

Merit

By GEORGE MATTHEW ADAMS

MERIT does find its true reward. In the final summing up, people pass for what they actually are. The gauge of Merit works straight and sound. Luck and Chance are the mere teasers of Fate.

Merit nothing beneath you. Do more than is expected of you. Do each task better than people think you can. Believe all things are possible with you and you cannot fail to Merit big. It is better to aim for Perfection and miss it, than to aim at Imperfection and hit it.

Merit nothing beneath you. Be not troubled over the accidents of Destiny. The rule of Merit will safely guide you into the wide way of Winning. True Merit is the rule and not exception. Thousands of pages of History illustrate this truth. Merit nothing beneath you.

Whatever you Merit and are worthy to receive, you will get. Concentrate your thoughts in elevating your Aims and Ideals, for these are they that lead you on and up.

Just Folks

By EDGAR A. GUEST

LEMON PIE.

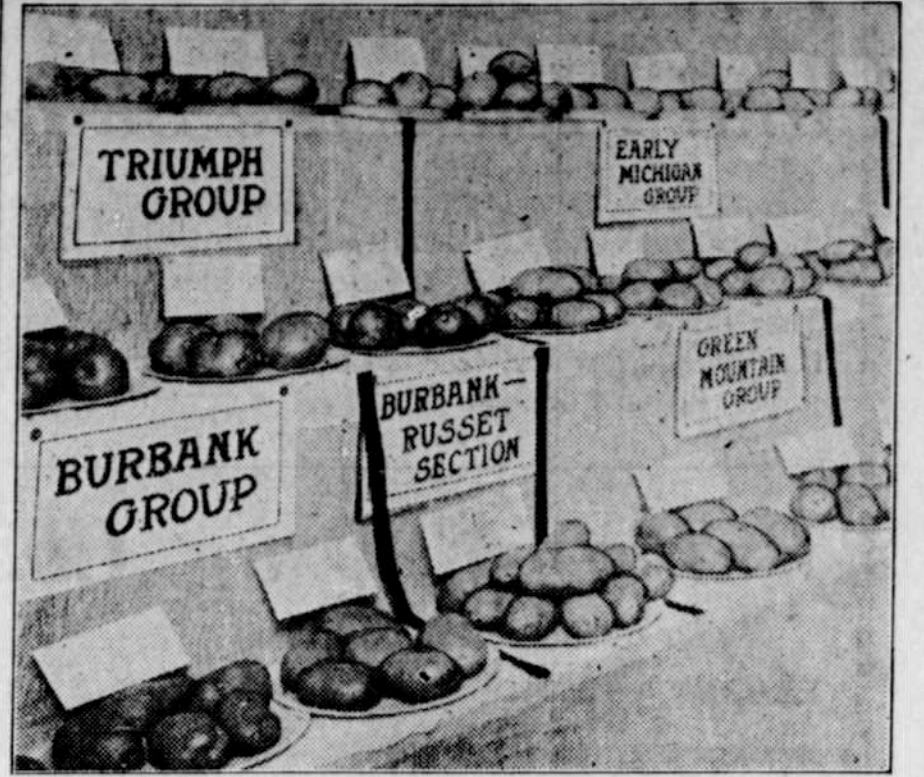
The world is full of gladness. There are joys of many kinds. There's a cure for every sadness. That each troubled mortal finds. And my little cares grow lighter. And I cease to fret and sigh. And my eyes with joy grow brighter. When she makes a lemon pie.

When the bronze is on the filling. That's one mass of shining gold. And its molten joy is spilling. On the plate, my heart grows bold. And the kids and I in chorus. Raise one glad exultant cry. And we cheer the treat before us. Which is mother's lemon pie.

Then the little troubles vanish. And the sorrows disappear. Then we find the grit to banish. All the cares that hovered near. And we smack our lips in pleasure. O'er a joy no coin can buy. And we down the golden treasure. Which is known as lemon pie. (Copyright by Edgar A. Guest.)

Lion Heart as Nerve Tonic. My lady of Zululand is not whisked off to a seaside resort or a mountain retreat to restore her shattered nerves; she is witch doctored with a prescription containing these ingredients: The heart and eye of a lion; the fat and flesh of an elephant; the hide of a rhinoceros; the second layer of skin of a hippopotamus; these mixed with the barks of many kinds of trees and soaked in the blood of a cow or sheep. This prescription is burned, made into a powder and taken internally. These and many "religious antidotes" of a like nature have been unearthed by the interchurch world movement in its economic, religious and social survey of the world.

COMPETITIVE EXHIBITS ARE HELPFUL IN CREATING ADDED INTEREST IN GARDENING



Exhibits of Fruit and Vegetables Stimulate Interest in Gardening and Foster Community Spirit.

An organized competition among neighbors helps create added interest in vegetable, fruit, and flower growing in a community. To aid those who desire to have a horticultural show or a garden competition, but who do not know exactly how to conduct one, is the purpose of a circular recently issued by the department of agriculture. The methods given in it are those which experience has proved to be easiest and best. Among the subjects treated are classification of entries, the arrangement of the hall and of the exhibits, the points observed in judging various horticultural exhibits, and the prizes offered.

Scope of the Exhibits.

An organization already in existence, such as a county or state fair, a farmers' club, a grange, a garden or horticultural club, or a boys' and girls' club, may father a horticultural exhibit or a group may be brought together especially for the purpose. Once organized, this circular suggests, the first step is to outline the scope of the exhibit. Competitions to be interesting must be fair and equitable. In order to make them so, competitors with similar opportunities should be matched against one another. The exhibits should be divided into as small units as possible, so that the person with only a few square feet of ground may show such products as he may grow, in even competition with like

products produced by larger gardens. A large number of small exhibits instead of a few large ones favor a successful show. An important point is to have the premium list made up early, preferably before seeds are ordered. Exhibits should be attractively staged, the entries for a class being kept together. Both classes and individual entries should be plainly and appropriately labeled.

Helpful Competition.

Vegetable, fruit, and flower gardens or the home grounds of a community may be fairly classed and judged. These make most helpful community competitions.

Token prizes instead of those of intrinsic value are all that is necessary for successful competitions.

When the time of the show approaches the exact date must be fixed, and this should not be changed. If it is done it may provoke a feeling of unfairness.

Where competitions of any of the types discussed in the department's Circular 62 have been held, they have been found not only to stimulate interest in gardening and home adornment, but even more to get neighbors acquainted with one another and develop community spirit.

An exhibition requires considerable effort, but it is usually felt to be well worth while, even by those upon whom the heaviest burden falls.

PLANS OF WORK FOR CONTROL OF BEETLE

Quarantine Against Insect Will Be Rigidly Enforced.

Poisoning With Sodium Cyanide in Water Will Be Practiced on Soils Badly Infested With Larvae or Grubs—Nets to Be Used.

At a recent conference of officials of the United States department of agriculture and the New Jersey department of agriculture, held at Riverton, plans of work for the control and suppression of the Japanese beetle were thoroughly gone into. Provision has been made thoroughly to inspect and certify products found free from the insect, including greenhouse and nursery stocks, fruits, vegetables and farm crops. While the quarantine will be rigidly enforced, it is believed that no serious interruption will result to the movement of most farm and other products from the infested territory. In control of the beetle, several methods of attack will be followed. Poisoning with sodium cyanide in water of such soils as are badly infested with the larvae or grubs will be practiced. Several million beetles, it is believed, can be captured by sweeping infested plants with nets. A band of vegetation from one-half to one mile wide surrounding the infested area will be kept thoroughly poisoned with insecticides sprayed or dusted on the plants. To prevent accidental carriage of the beetles on automobiles and other vehicles and on pedestrians, the roadways have been cleared, by grubbing and burning of food plants of the beetle. The weed food plants will be kept down by the use of large quantities of weed-killing chemicals. Attention is being given to the introduction of parasites of the beetle from Japan. An agent of the bureau of entomology is already in Japan, engaged upon the work.

The officials connected with this project believe that the operations of 1920 will pretty definitely indicate what can be expected from large-scale operations in suppression of the beetle.

PROTECT TREES FROM SWINE

Damage Can Be Reduced by Providing Rubbing Posts for Hogs Infested With Lice.

Very young trees can be protected from damage by hogs by providing rubbing posts and keeping the hogs free from lice. The animals will not rub against the trees so as to injure them if they are free from vermin. A good hog oiler is a great help in this case.

MARKET STATIONS OF VALUE

Branches Reach Out in Every Direction and Constantly Circulate News of Importance.

Market stations maintained by the bureau of markets, United States department of agriculture, in several of the leading cities, are well termed "branches." They reach out in every direction from the central office. Connected by wire and mail service, there is constant circulation of vital news, out and returning, between them and the office in Washington. The raw materials, so to speak, are gathered and worked over to make the market reports, reviews, and press articles which are distributed for the benefit of the public. The market station man works from the early stir of activity in the market section until the day's stint is finished. Usually he is a man with considerable technical training and experience in production or marketing.

TIMOTHY IS LOW IN PROTEIN

One of the Poorest Live Stock Feeds Farmer Can Grow—Cannot Be Compared With Alfalfa.

More timothy hay is grown in the United States than all other hays combined and yet timothy is one of the poorest live-stock feeds that the farmer can raise. Its value for feeding purposes cannot be compared with clover or alfalfa. It is low in protein, the nutrient upon which farmers and more especially dairymen must to a large extent rely for the best returns from their herds; it is not very palatable to live stock, except, perhaps, to horses, and it has an undesirable constipating effect upon all classes of animals. Furthermore, it yields less than clover or alfalfa, and it is a fertility destroyer instead of a soil builder. All things considered, it has very little to commend it.

SAVE OLD FARM MACHINERY

Carefully Inspect Discarded Implements and Lay Apart Useful Gears, Braces, Etc.

Farm machinery, when discarded, should be carefully gone over with a view of saving the parts which have not been worn and which may be available for future use on other machines, or for other purposes. There are always many braces, gear wheels, bolts and nuts that can be used again.

When the machine is discarded instead of hauling it to an obscure place to rust away, why not take it apart and place the usable pieces or parts in the machine shed, or work shop? It takes only a little time to take the machinery apart before it becomes rusty and many pieces thus secured will come in handy.