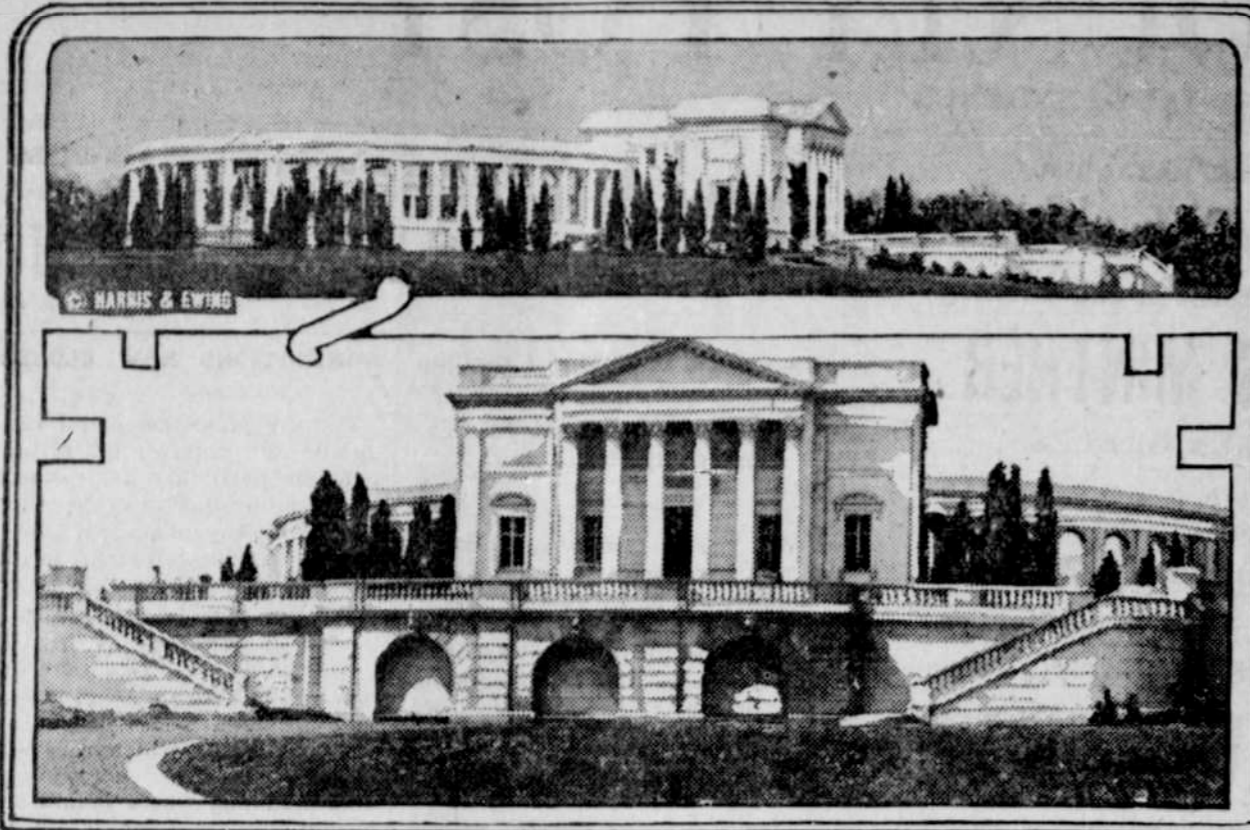


## ARLINGTON AMPHITHEATER ALMOST COMPLETE



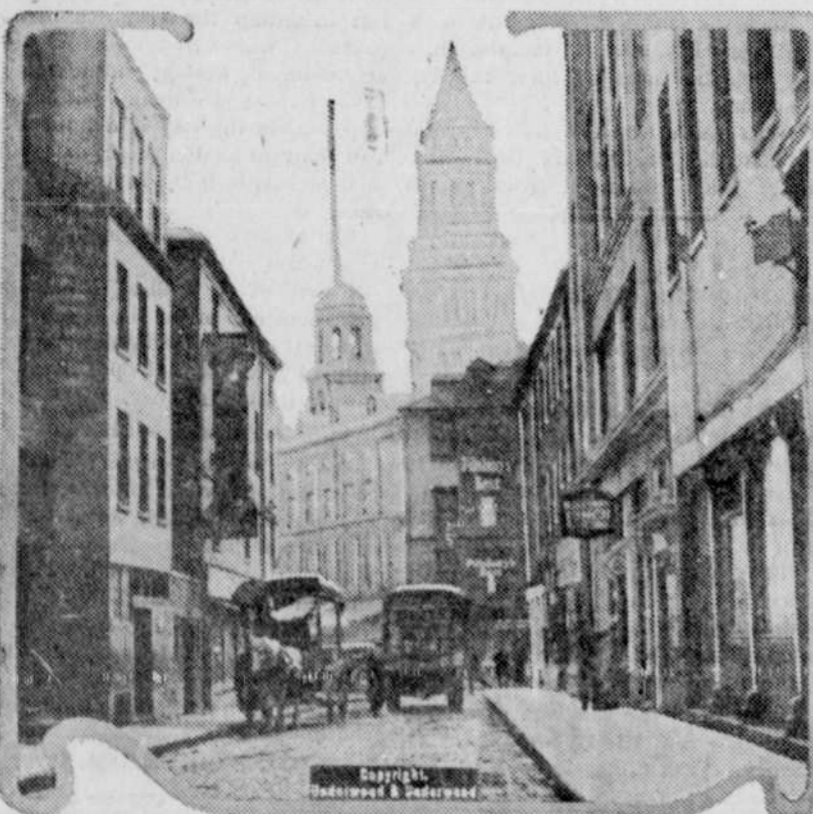
General view of the Arlington amphitheater, built on an eminence overlooking the Potomac river at Washington. It cost nearly a million dollars, and has been in process of construction for five years. Below is shown a detailed view of the front.

## TORNADO CAUSES DEVASTATION IN GEORGIA



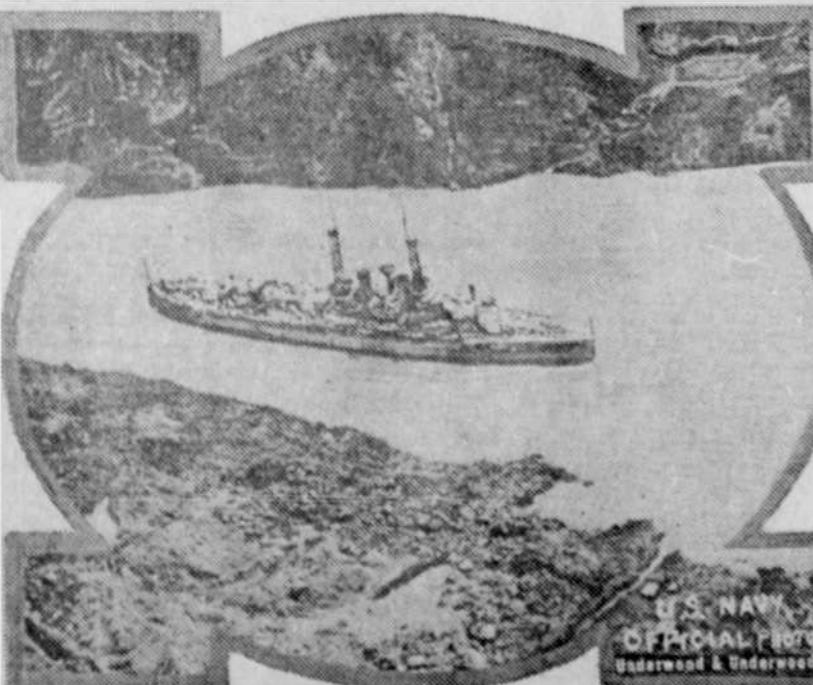
The cotton mill district of La Grange was almost entirely overturned by the recent tornado. The homeless were forced to make their beds among the wreckage. The lower picture shows an immense hole torn in a house by the tree.

## THE OLD AND THE NEW IN BOSTON



View looking down Elm street, Boston, showing the recently constructed Faneuil hall and the Custom house tower looming in the foreground.

## AIR VIEW OF WARSHIP IN PANAMA CANAL



This photograph shows the U. S. S. New York passing through the Panama canal. It was made from a naval plane.

## EASTER SELF FLAILER



Large numbers of Filipinos do penance for their sins at Easter by spending a day wandering about flailing themselves with a bamboo until sunset, when, covered with blood, they seek a wayside pool wherein to wash their wounds.

## DREADED KING COBRA



This reptile grows to a length of 12 feet and his poison is more swiftly fatal than that of any other. He is one of the few snakes that will actually chase man. He dwells in Siam, India and in tropical China.

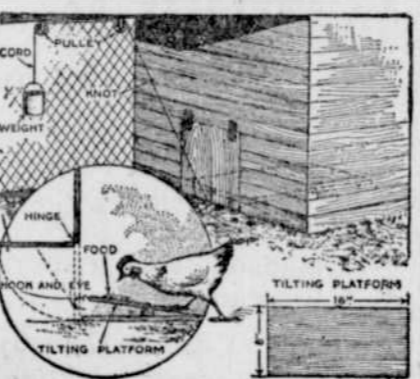
## POULTRY FACTS



### FOWLS OPEN DOOR OF HOUSE

Tilting Platform Arranged So That Hens May Liberate Themselves by Stepping on It.

The following is one of the simplest methods of enabling hens to open the henhouse door in the morning, thereby relieving their owner of the necessity of rising at daybreak to let them out. The door of the henhouse is hinged at the top, so that it opens outward, and the lower edge catches against the floor, so that it cannot swing inward. Near the lower edge on the outside a cord is attached, which passes upward over two small pulleys hanging from a beam. The other end of the cord supports a tin can weighted with stones, so as to be just heavy enough to pull the door open and keep it so. On the floor of the henhouse, right in front of the door, is a tilting platform, with a hook in the front edge, which fits an eye screwed into the door. The door can therefore be locked at night by catching the hook in the eye, and the pull of the cord against the door on the outside has the effect of making the hook hold securely. When the owner has locked the door in the evening, after the hens have gone to roost, he sprinkles a few grains of feed on the outward end of the tilting platform, which is now in a horizontal position, and leaves the henhouse by the large door, which he locks behind him. On the following morning, the first hen which jumps upon the platform to pick at the feed tilts the platform, releasing the hook from the eye; and the weighted can on the outside pulls



Hens Unlock Poultry House Door by Stepping on Tilting Platform.

the door open. A knot in the cord, made to catch in the pulley, will prevent wrenching at the hinges.—L. Hussakof, Brooklyn, N. Y., in Popular Mechanics Magazine.

### POULTRY IN PUREBRED CLASS

Entry of Peafowls Received From South Dakota Farmer—Also Turkeys, Ducks and Geese.

The first peafowls have been entered in the "Better Sires—Better Stock" crusade of the agricultural colleges, the United States department of agriculture, and co-operating agencies. The entry comes from Butte county, S. D., and the owner is J. L. Jones. He is using purebred sires in breeding horses, cattle, swine and poultry. Among his poultry he records a peacock and two peahens, also a liberal number of turkeys, geese and ducks. The campaign already is giving valuable facts and figures regarding the classes of live stock most commonly kept together on farms.

### MAKE FRIENDS WITH FOWLS

Hens Will Not Do Their Best When They Run at Approach of Attendant—Feed From Hand.

Make friends with your hens. They will thrive better. You will like to care for them better. Hens cannot be at their best when they always run at the approach of their attendant. Feed a little from your hand. You will get their confidence, and more of their eggs.

### ARRANGE TO PRESERVE EGGS

Those Gathered in April and May May Be Put in Waterglass and Saved for Winter.

Save eggs during April and May for winter use by preserving in waterglass. Mix nine quarts of water, boiled and cooled, with one quart of waterglass. Place the solution in a five-gallon jar. Will preserve 15 dozen eggs. Store in cool place for winter use.

### COLONY HOUSES BENEFICIAL

Poultryman Enabled to Place Growing Stock on Clean Ground Reducing Disease Dangers.

Colony houses permit the poultryman to place his growing stock on clean ground each year and this reduces the danger of disease which is present when young stock is raised on the same soil over which the old birds have been ranging for many years.

## DISINFECT SEED BED TO PREVENT DISEASE

Before Planting Be Sure to Destroy All Fungi.

Sterilization by Heat in Form of Steam is Most Effective—Formalin Treatment May Be More Practical for Majority.

(By OTIS REINKING, Colorado Agricultural College, Fort Collins, Colo.)

Be sure to disinfect your seed beds, cold frames or hot house beds before planting. The purpose is to kill all fungi which cause damping off, stem rot, black rot, and other diseases. Sterilization by heat in the form of steam is the most effective; however, the formalin treatment may be more practical for the majority.

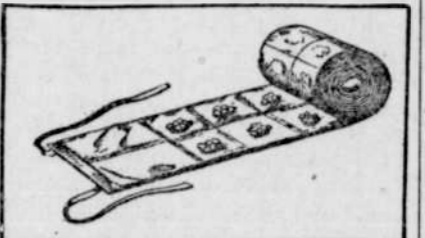
The formalin solution is made up by using 4 quarts of formalin (40 per cent formaldehyde to 50 gallons (1 barrel) of water. Apply at the rate of 2 quarts per square foot of ground. One barrel, at this rate, will cover a piece of ground one rod long by six feet wide. Apply the solution gradually to the soil with a sprinkling pot. It is well to cover the bed for 24 hours with sacks disinfected in the formalin solution.

Do not plant until the third or fourth day after disinfecting, or until the ground is in a suitable condition. This will allow all formalin fumes to escape so that the seed and young growing plants will not be injured.

### SEED TESTER QUITE SIMPLE

Inexpensive Contrivance Comprises Envelope Enfolded Pad Which Retains Moisture.

The Scientific American in illustrating and describing a seed tester invented by A. F. Esslinger of Ypsilanti, Mich., says: The object of the invention is to provide a simple, and inexpensive contrivance for testing seeds. The tester comprises an envelope



Showing Manner in Which Seeds Are Enclosed in Tester.

formed by folding longitudinally the outer member and stitching it at one of the edges, this envelope enfolds a pad which absorbs and retains moisture for a period sufficient to cause germination of the seeds. The envelope is stitched longitudinally and transversely, to form sections each of which is numbered for identification purposes.

### SOIL FERTILITY IS LACKING

Many Unprofitable Pastures Need Reseeding or Liberal Application of Plant Food.

Many pastures gradually prove unprofitable not from overgrazing or seasonal conditions but from lack of soil fertility. This is especially true where cattle, sheep, etc., graze in an open field and then run into some shady spot to rest, so conditions should be carefully studied. In some cases it will be found that the pasture needs reseeded, though in many cases it will be learned that it is overgrazing or lack of available fertility in the soil that causes the decline, in which case removing the stock for a time if from overgrazing or the application of the necessary plant food if the latter will prove profitable.

### CONFINED FOWLS NEED GRIT

Conditions in Winter Season Are Vastly Different From Summer When Hens Are Free.

When the hens are running in the field in summer they pick up and eat small sharp pieces of gravel which serve as grit to grind the food in the gizzard and keep the digestive organs in good shape. When the hens are confined to the houses during the winter they must have plenty of grit, and the commercial grit to be given in boxes and hoppers is the best, because it is the right size and is sharp.

### LIME IS GOOD DISINFECTANT

Scattered About Henhouse It Has Tendency to Keep Fowls in Thrifty Condition.

Air-slaked lime is one of the best things known to scatter about in the henhouse, over the walls, roosts and floor, and in the nests, as a disinfectant. It keeps fowls in good health. It is also excellent to use in fighting roup and mites.

### MORE FERTILIZER IS NEEDED

Every Shovelful of Manure Should Be Saved and With Rubbish Plowed Under.

More fertilizer is needed on many farms. Every shovelful of manure should be saved and all rubbish turned under when possible to improve the fertility of the soil. It takes plant food to yield crops. Poor land should be improved.

### NATUROPATH

Dr. Geo. W. Crickwell, Specialist in Female Diseases—704-6 Dekum Bldg.

### PAINTS AND WALL PAPER

Write us for prices. Pioneer Paint Co., 188 First St., Portland.

### PLATING—NICKEL AND SILVER

Write today for prices—we pay return postage on small parcels. California Plating Works, 214 2nd St., Portland.

### PLUMBING & PLUMBING SUPPLIES

We can supply you with any kind of plumbing supplies at wholesale prices. We will gladly estimate cost of any job. Write for prices.

### RAZORS

The famous compound for tempering razors without heat. Makes shaving a delight. The Stratussum Co., 609 Chamber of Com.

### SAUNTERS' AGENCY

We help the appearance of women. Twenty-two inch switch or transformation, value \$7.00, price \$2.45. 400 to 412 Dekum Bldg.

### STOVE REPAIRS

Repairs for all stoves and heaters. Prompt attention to mail orders. Spokane Stove & Furnace Repair Works, Spokane.

### TAILOR FOR PARTICULAR PEOPLE

If you want up-to-date suits see M. Weinstein. Satisfaction guaranteed. 410 Stark St., Portland, Ore.

### TEACHERS' AGENCY

ROCKY MOUNTAIN Teachers' Agency. Enroll free. Frank K. Welles, former Asst State Supt., mgr. NW bank bld. Portland.

### WALL PAPER—PAINT

At wholesale and retail. Mail orders promptly filled. Smith's Wall Paper House, 108-110 Second St., Portland.

### Introduction of English Walnuts.

The English walnut came to the Pacific coast in 1867, when Joseph Sexton of Santa Barbara, Cal., brought a sack of nuts from Chile and grew 1,000 trees at Goleta.

### Sneeze Reform.

Do you sneeze correctly? A learned doctor says a-choo! is wrong; that you should sneeze a-da! or a-de! Try this on your organ.—Boston Transcript.

### MARKETING BY PARCEL POST

Not All Farm Products Lend Themselves to Practice—Saving Can Be Made With Some.

While it may be attractive to a city dweller to believe that he can have a vegetable garden grown for him 100 miles or 150 miles away, place his orders for the cost of a stamp, and have the produce delivered at his door, it should be remembered the United States department of agriculture points out that not all farm products lend themselves to direct marketing by parcel post. Usually it is impracticable to market such heavy products as potatoes by parcel post, whereas eggs, butter, sausage, poultry, many vegetables, and nut meats may frequently be shipped with profit and at a saving to the purchaser. In general the greater the value per pound the more favorable is the chance for direct marketing.

### NATURE SELF-PRUNES TREES

Pruning Is Often Paying Practice in Farm Timber Tracts of Valuable Small Pines.

When trees are properly spaced, nature "self prunes" the lower branches. But in farm timber tracts of small pines and with valuable kinds of trees, pruning is often a paying practice, say forestry specialists of the United States department of agriculture, if it is done during the slack time of winter.

### SEED HOUSES ARE RELIABLE

Occasionally Concern Found That Cannot Resist Temptation of Mixing Grades.

The majority of the seed houses are reliable and trustworthy, but occasionally a concern cannot resist the temptation of mixing common, inferior and good seed together and selling it as first-class grade.

## NAME 'BAYER' MEANS ASPIRIN IS GENUINE

Get relief without fear as told in "Bayer package"



"Bayer Tablets of Aspirin" to be genuine must be marked with the safety "Bayer Cross." Then you are getting the true, world-famous Aspirin, prescribed by physicians for over 18 years. Always buy an unbroken package of "Bayer Tablets of Aspirin," which contains proper directions to safely relieve Colds, Headache, Toothache, Earache, Neuralgia, Lumbago, Rheumatism, Neuritis, Joint Pains, and Pain generally.

Handy tin boxes of twelve tablets cost but a few cents. Druggists also sell larger "Bayer" packages. Aspirin is the trade mark of Bayer Manufacture of Monoaceticacidester of Salicylicacid.—Adv.

## Cuticura Soap—The Safety Razor—Shaving Soap

Cuticura Soap shaves without sting. Everywhere 2c.