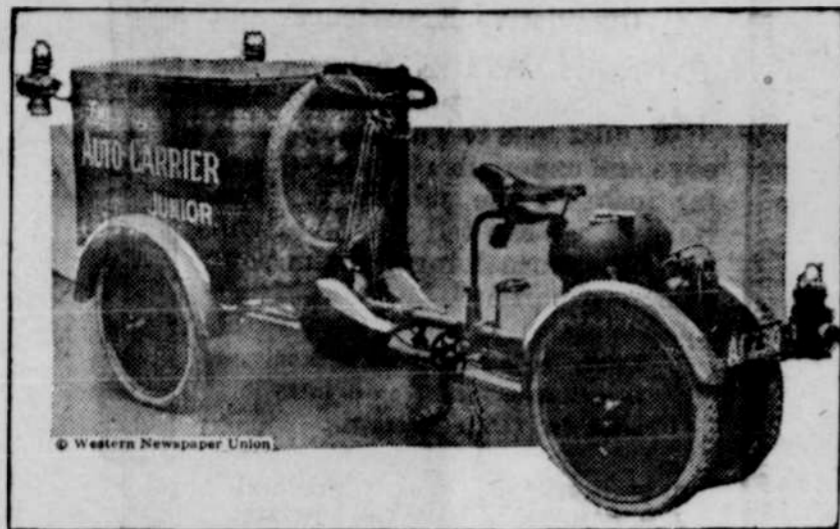


AUTO-CARRIER HAS GREAT CARRYING POWER



The photograph shows a new motor vehicle called the "auto-carrier junior," and is equipped with twin driving wheels in the rear, which get their power direct from the motor contained between them. Great speed, carrying power and durability are claimed for this model, one of those in favor at the recent auto and motorcycle show at Olympia, England.

BEAUTIFYING THE PUBLIC HIGHWAYS

It is being suggested that horse chestnut trees be planted along the public highways to commemorate the horse who has passed as a common carrier, dogwood trees in honor of the dogs slain by motor cars and chickweed for the chickens who in extreme folly attempted to cross the road in front of a passing car once too often.

Dr. Mendelsohn

Specialist
in
Eyesight



Can be seen at his office 211-212 Oregon Building (formerly the Hubbard building). One third of a century practical experience—9 years practice in Salem. My years of experience and the satisfactory service I have rendered to thousands of Marion and Polk county people assures you competent and lasting relief in all your eyesight troubles.

In every trade, profession or branch of work there are found a few men who, from special fitness or education, or both, are better prepared to serve you in their line than the multitude of others in the same field.

Since optometry requires especial ability in both professional and mechanical work, men that are fitted to do both equally well are scarce.

Therefore, you cannot be too particular about the selection of the man to whom you entrust your eyes.

The professional work, the examining and measuring of your eye defects, must be skillfully done. The mechanical part, the making and adjusting of your glasses, is no less important.

I am making a specialty of correcting children's eyes. MY PRICES ARE VERY REASONABLE for the material and service you will receive and I guarantee satisfaction in every respect. Office hours from 9 to 12 a. m.—1 to 5 p. m. Sundays and evenings by special appointment.

DR. M. P. MENDELSON

FITS GLASSES CORRECTLY

Phone 443

Salem, Oregon

THE WIND MILL SHOP
A. G. Williams, Prop.

All kind of barbering done and satisfaction guaranteed. Ladies' shampooing and massaging given special attention. Shine in connection.

VALLEY & SILETZ
TIME TABLE

Effective April 1, trains will run as follows:
No. 2 arrives from Hoskins 9:15 A. M. daily
No. 4 arrives from Camps 4:00 P. M. daily except Sunday
No. 1 departs for Camps 10:50 A. M. daily except Sunday
No. 3 departs for Hoskins 4:15 P. M. daily
Freight service 2:30 P. M. on Tuesdays and Saturdays

SWOPE & SWOPE
LAWYERS

Office over Craven & Walker's Store
Independence, Oregon

TO REALIZE THE MOST MONEY

We buy everything you want to sell and sell everything you want to buy. Cash or trade.

Bring in everything you want to sell and I will sell it for you on a commission.

MAX GOLDMAN

EGGS

O. A. C. BARRED ROCK EGGS for hatching. These are from their heavy laying strain.

15 Eggs for \$2.00.

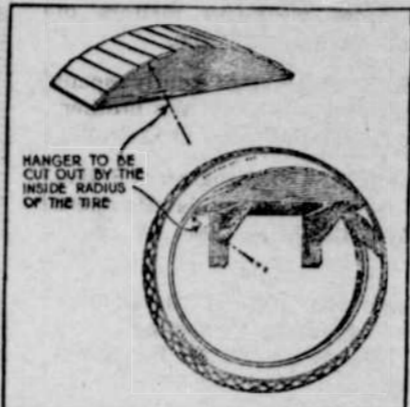
WILLARD E. CRAVEN

PRESERVE SHAPE OF STORED AUTO TIRES

Illustration Shows Satisfactory Type of Hanger.

Device is Made of Few Boards and Mounted on Brackets Constructed of Strips of Wood—How It is Put Together.

There are very few public or private garages that have not at least one tire not in use. The usual method of storing these spares is to hang them on large nails or hooks. This may do for a day or two, but if left for any length of time the tire will assume an irregular



Tires Simply Can't Get Out of Shape if Stored on This Rack.

lar shape and a weak spot will develop where the nail has been when the tire is put into use.

The illustration shows a type of hanger that may be made wide enough to accommodate a pair of tires, or even more, and will keep them in their original shape. It is made of a few boards and mounted on brackets constructed of 3-in. strips of wood. The sides are curved to fit the inside of the tire and short pieces of board are nailed across their upper edges. The tire is thus supported on about a third of its circumference and so held in shape.—Charles R. Fisher, in Popular Science Monthly.

CLEANING AUTO REFLECTORS

First Wash Off All Particles of Dirt With Hot Water, Then Wipe Surface With Alcohol.

(By FRED G. PERSON, State Agricultural College, Fort Collins, Colo.)

In cleaning the reflectors, first wash off all particles of dust and dirt with a stream or spray of hot water. The hot water is most conveniently applied with a syringe. Do not apply it with a cloth. Then take a piece of absorbent cotton saturated with alcohol and wipe off the surface of the reflector. This procedure will remove all dirt and grease and leave the surface dry and clean. Do not attempt to clean the reflector with a handkerchief or with polishing powders of any kind.

TO LUBRICATE AUTO SPRINGS

Apply Mixture of Cup Grease and Graphite by Jacking Up Car and Spreading Leaves.

The best method of lubricating the springs of your auto is to jack the weight of the car off of them, then force the leaves of the springs apart with a screw driver or spring spreader and put between them a mixture of cup grease and graphite.

THE EXCEPTION

They've taken the kick from the cocktail.

No more it exists in the wine; They've also removed it from cider, And out of the fruits of the vine. No kick can we get from the julep— And, kickless, a julep is rank— They've taken the kick out of all things Except the machine that you crank.

—Exchange.

WHEAT OF HIGH FOOD VALUE

A super-wheat, containing an unusually high percentage of gluten, and so sturdy that it may be grown anywhere from Labrador to Patagonia, has been evolved after experiments extending over 11 years by Luther Burbank, the plant wizard of California.

The new wheat, a winter brand like other wheats grown in California, is an exceedingly early grain, the earliest of some 400 varieties grown by Burbank. It was tested by comparison with 68 of the best wheats of the world. Burbank found it superior in yield, uniformity and all other desirable characteristics. It grows vigorously to a height of four feet on good, ordinary soil, and thrives in almost any but the most extreme climates.

The super-wheat was tried for baking bread, with highly satisfactory results. The loaves were of good color, texture and taste, the food value of the bread depending on the high percentage of gluten in it. Gluten has a high food value and contains from 15 to 18 per cent of nitrogen, in addition to carbon, hydrogen, oxygen and sulphur.

FORD
THE UNIVERSAL CAR
It deserves Genuine Ford Parts.

Wear Depreciation
Is not like the thief Change Depreciation in that it has a legitimate starting.

The Prevention of Wear Depreciation
Is largely in your hands. Every part of a Ford Car is composed of the finest material suitable for and properly heat treated to stand the stress and strain, the wear and tear peculiar to that part. In this regard the Ford has no equal. The efficiency of the Ford Car, known the world over is no accident. The finest of steel, the finest of other metals, heat treated to a point of perfection. It is made with a wide margin of strength in every part—even to the detail of the tires. The Ford Touring Car's regular equipment includes tires that are a greater per cent oversize for the weight they carry than the equipment tires of other makes.

The Ford Car is the efficiency car in wear and tear, in no "Change Depreciation" and in its first cost.

Buy the Ford Car because it is the best car in the world.

Buy the Ford Car because the Ford Motor Co. gives its patrons an absolutely square deal in the matter of service and will not rob you by fast out-dating the car you purchase.

Ace Garage

AUTOMOBILE GOSSIP

If gasoline drips from the carburetor when the car is standing and the engine is not running the needle valve connected with the float should be investigated.

The great deal of clutch trouble for which the owner can find no obvious cause is due to the fact that the clutch shaft is out of true with the center of the flywheel.

A drill can be made to cut an oversize hole by grinding one cutting edge a little longer than the other. This is a scheme that is useful in an emergency, when a hole must be made of a size for which there is no drill.

MAXWELL TRUCKS GAIN RAPIDLY IN POPULARITY

With 15,000 1½ ton Maxwell trucks now in daily use, sufficient data have been accumulated to stamp this as one of the most economical and consistent of commercial vehicles on the American market.

The first Maxwell truck was not produced until 1917 and with the 18 months of war that followed there was little chance for sufficient production to make it the predominant figure it is today.

There are two classes of haulers using Maxwell trucks—the man who is just deserting the old-fashioned team of horses and who is desirous of making his first step an economical one. The second one is the man who has been in the truck division for several seasons but who from using heavier vehicles has determined that a ton-and-a-half Maxwell can carry his capacity loads and costs less to operate.

Both of the foregoing classes, upon entering the Maxwell ranks, become charged with some sense of appreciation and enthusiasm. The Maxwell truck department at Detroit is constantly in receipt of letters, and especially photographs, showing Maxwell trucks answering the call of every demand in the field of agriculture and general transportation.

PRICES ON RACINE TIRES

Willard E. Craven Hardware is giving prices on Racine tires in his ad on the last page of this Post. Automobile owners are all familiar with the merits of the Racine tires.

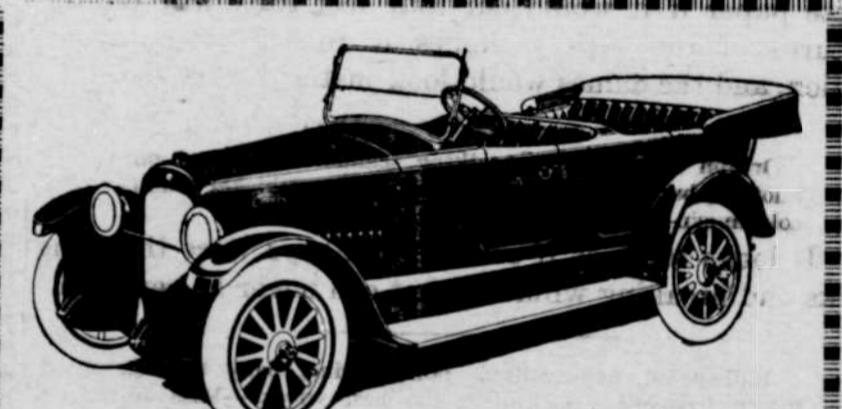
The Ford may advance in price but they'll buy them just the same.

GUARDIAN'S NOTICE OF FINAL ACCOUNT.

In the Matter of the Estate of

Wendell Hill Denlinger, a minor. Notice is hereby given that H. Denlinger, the duly appointed and acting guardian of the above entitled estate, has filed his final account concerning his administration thereof; and that Monday, the 29th day of March, 1920, at the County Court House in Dallas, Polk County, State of Oregon, has been set as the time and place for the hearing of said final account and any objections that may be made to any part thereof. Notice is hereby given to all persons who may have any objections to said final account, or to any part thereof, to present the same at the time and place aforesaid. This notice is published in The Polk County Post by order of Judge A. B. Robinson, County Judge of said County, for four successive and consecutive weeks immediately preceding the said hearing.

H. DENLINGER,
Guardian; Address, Hillsdale, Oregon.
First insertion Feb. 27, 1920.
Last insertion March 26, 1920.



THE roomy comfort, handsome lines and powerful motor of the Nash six two passenger roadster make it especially practical for physicians, engineers, contractors and traveling men. Its Nash Perfected Valve-in-Head Motor makes it unusually powerful, economical and quiet.

THE NASH SIX
Perfected Valve-in-Head Motor

Five-Passenger Touring Car	\$1695
Two-Passenger Roadster	\$1295
Four-Passenger Sport Model	\$1745
Seven-Passenger Touring Car	\$1795
Four-Passenger Coupe	\$2495
Seven-Passenger Sedan	\$2725

Prices f. o. b. Kenosha

The Auto Utilities Co.,
U. G. BERRY, Mgr.
DALLAS, OREGON INDEPENDENCE, OREGON
NASH MOTORS
VALUE CARS AT VOLUME PRICES