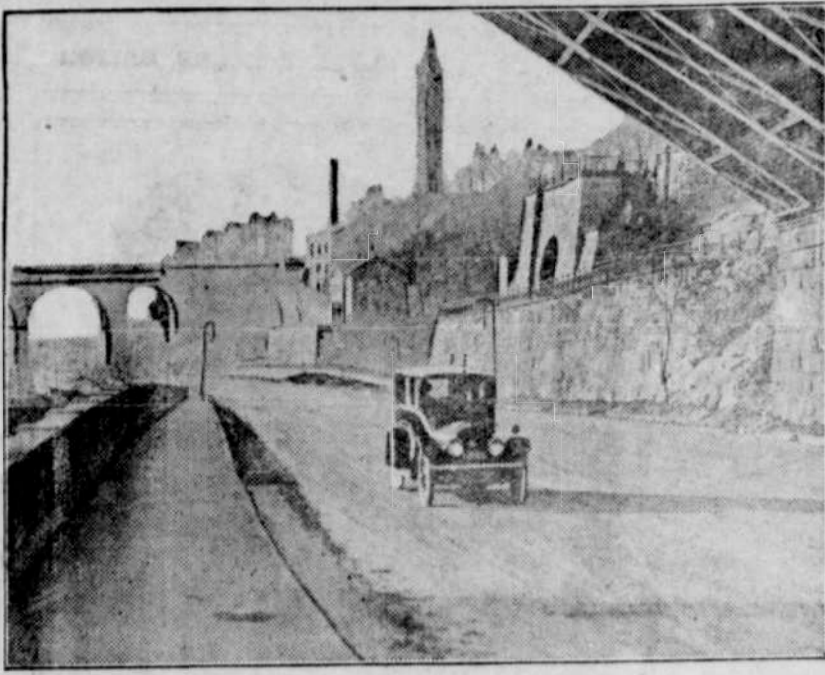


FAMED OLD SPEEDWAY OPENED TO MOTORS



The famous old Speedway now the new Speedway running along the Harlem river, New York city, from 155th street to Dyckman street, was recently opened for the first time to passenger automobiles.

The speedway was originally constructed for the accommodation of trotting horses and pacing horses twenty-one years ago. Many of the most famous trotting races in New York were held on the famous dirt course. It was sacred to light horse-drawn pleasure vehicles.

Owing to pressure and the lengthy discussion of its uses it was reconstructed and thrown open to the automobile. The commissioner of parks was recently empowered by the state legislature to open this and other roadways at his own discretion.

USEFUL POINTS FOR CAR OWNER

Automobilist, by Careful Observation of His Machine, Can Save Garage Bills.

REPAIRS ARE EASILY MADE

Many Small Irregularities Can Result in Serious Breakdowns if Not Watched—Some Instructive Little Odds and Ends.

Following are a number of useful points that all good motorists will be glad to learn:

When the engine, after being started, runs for a minute or two and then stops, the first place to look for trouble is in the gasoline feed line. A partial stoppage in the pipe will lessen the flow of fuel so that the float chamber fills slowly. On being started the motor at once consumes this gasoline and then has to wait for more. There is another possible cause of this trouble, and that is the float of the carburetor sticking. Of course, if the float is stuck in a high position the flow of fuel will be greatly lessened or even stopped.

Use for Old Files. Occasionally it becomes necessary for the man who operates his own car to file a piece of cast iron that has been subjected to friction and has acquired a glassy surface of "skin." The best way to get through this skin is to use the edges of an old file, as using a good file on such surfaces will spoil it.

To Clean Spark Plugs. An excellent method of cleaning spark plugs, or in fact any mica surface, is to wash them first in a 10 per cent solution of acetic acid, which is an infallible solvent of grease and carbon deposits. The plugs should then be washed off with gasoline and finally dried by rubbing them with a cloth.

Bluing Metal. The car owner who does his own repair work sometimes finds it's necessary to "blue" small bright objects, such as screws. This may be done by placing them on a piece of sheet iron and holding them over a fire until they assume the desired color.

Cleaning Contact Points. It is sometimes difficult to find a really satisfactory agent for cleaning the contact points of ignition apparatus or the surface of a commutator on a starting motor or a lighting dynamo. There is something known as "cuttlefish paper," which is finer than the finest quality of sandpaper and which is very well adapted to this operation. Cuttlefish paper is not regularly carried by hardware stores, but it may be obtained from dental supply houses.

Interior Wire Break. On rare occasions it happens that a wire breaks inside its insulation, giving no exterior sign of the trouble. The car owner thinks the ignition system has gone bad, changes spark plugs, sends the magneto to the service station, etc., when all the time this interior wire break is the cause. In the event of an obscure ignition trouble remember this.

Leaking Tube. Sometimes an inner tube receives a puncture big enough to allow the tire to become deflated after a brief interval, but not visible to the naked eye. When this happens in the garage the bucket of water tells the tale at once, but on the road about the only way of locating the leak is to inflate the tube and hold successive portions of it close down to the dust along the surface of the road. When the puncture is brought into this position the outpuff of air will ruffle the dust and indicate the position of the leak. The varnish on the new car tire

quently becomes speckled after its first encounter with a rainstorm. These spots are hard to get off, but a treatment with raw oil, applied with plenty of elbow grease, will come as near turning the trick as anything.

Cause of Knocking. In motors with detachable cylinder heads great care should be taken to see that the gasket used to pack the joint does not project into the combustion chamber. When this occurs the gasket is likely to become incandescent, causing preignition knocks and even back-firing in the carburetor.

Home-Made Cement. Four parts of iron filings, two of lime and a fifth part of common salt mixed to a paste with vinegar make an excellent cement for spark plugs, for connecting pipes, etc. When carefully mixed this cement will stand compression and heat and can be air dried.

COASTING DOWN LONG GRADE

It is Dangerous Practice Unless Driver is Thoroughly Acquainted With Highway.

Coasting down a long grade with many curves is dangerous, unless you know the road, especially if the engine is running in neutral. Deep sand, a wet spot in the road, or any of a number of conditions might be met that would require quick work to prevent an accident. The driver has better control if the engine is running and the clutch engaged. Poor brakes help to keep the doctors and undertakers busy.

DRAINAGE FOR CRANK CASE

Accumulation of Grit, Particles of Carbon and Dirt Should Be Removed With Oil.

All new cars and those which have been run a few hundred miles should have the cylinder oil drained from the crank case. It is good economy to have this oil drained after the first 500 miles, on account of the accumulation of grit, particles of carbon and dirt from bearings in the oil. This grit is kept in circulation and acts in the same manner as emery, cutting the bearings.

SLOW DOWN AROUND CORNERS

Enforcement of Rule Not Only Protects Pedestrians, but Saves Wear and Tear on Cars.

The traffic rule requiring cars to turn corners at four miles an hour is not merely to protect pedestrians, but is for your benefit as well. Turning corners at high speed strains the tires, spokes and axles, and may result in skidding, followed by an overturned car. So slow down and coast or go into second gear.

AUTOMOBILE PAINTS

Missouri has one motor truck to every 40 farms.

There are 2,121 automobiles registered in Tokio, Japan.

The Japanese are considered skillful automobile drivers.

In the past twenty years 7,700,000 automobiles have been produced in the United States.

Motor trucks distribute 12,000,000 gallons of gasoline daily to supply motor vehicles in the United States.

Police authorities in Brazil keep a record of all careless automobile drivers through a sort of Bertillon system.

In many makes of cars using battery ignition it is possible to keep the car running without the use of the battery.

MAYBE A BIT SUPERSTITIOUS

Anyway, for Some Reason, Bride Wasn't Going to Allow Hubby to Wear Those Shoes.

They're telling a good story on a young society woman recently married and a member of the highest circles of which New York boasts. The young matron and her husband were attending a rummage sale being conducted for the benefit of something or other and among the articles offered for sale were a pair of fairly decent-looking shoes that were little worn.

The husband decided he would buy the "kicks." The price was agreed upon, whereupon the salesperson in charge remarked that the shoes were "very good and had belonged to Oliver Eisenhart of Horseheads, the dairyman, you know, who makes all the butter for the Waldorf Astoria. Surely you know Ollie? He is the father of 15 of the nicest children you ever saw."

"Father of 15 children?" gasped the bride.

"That's right," replied the clerk. "Henry, put those shoes right down," ordered the society woman. "You're not going to step into Oliver Eisenhart's shoes." And Henry "put those shoes right down."
—New York World.

DID HER BEST



Ina—But perhaps he was bashful. You should have thrown out some hint that a kiss would not be objectionable.

May—I did everything possible. I told him I had such a sore throat that I couldn't scream, whatever happened.—Pittsburgh Chronicle.

NEW WAY TO COLOR SLIDES.

A process of coloring lantern slides recently developed by an American scientist makes possible some novel projection effects, and has many advantages over hand-tinting and color photography. A fine colloid film on the glass slide carries the image. Various dyes may be applied in monochrome or mosaic arrangement, or by superimposing a number of films, permitting optical demonstrations on the screen. One experiment is the projection of black and white ruled lines, 250 to the inch, on a screen similarly ruled with alternate red and green lines. A lateral shift of .004 inch then apparently changes the color of the screen.—Popular Mechanics Magazine.

DOG'S DEVOTION FATAL.

When Prince Edward was in White Sulphur Springs, W. Va., a mountaineer's hound attached itself to him and refused to leave the prince's side, even sleeping under the windows of the royal suite. The prince was going aboard ship at New York, to depart for Halifax, whence he was to sail for England, when the dog again appeared. It is believed he traveled overland all the way from West Virginia. Guards shoed him off the dock, but he came back, and, as the Renown pulled out into the harbor, the dog leaped into the water and swam after the warship. He was headed for Sandy Hook when last seen.

IMPROVED CONDITIONS.

"Did Crimmon Gulch have an old-fashioned Christmas?"

"No," replied Cactus Joe. "We had a strictly modern Christmas. In the old days if Santy had come along with a vehicle loaded with gifts he'd have been held up by the sheriff on the suspicion that he was a road agent."

ITS SPECIES.

"There is a house near ours which has more than 200 varieties of creepers, and it is a crying nuisance."

"Why, isn't it decorative?"
"No; it's an infant asylum."

FORD

THE UNIVERSAL CAR

It deserves Genuine Ford Parts.

Car Depreciation Divides Itself Into Three Classes

TIME DEPRECIATION

An almost negligible factor.

WEAR DEPRECIATION

Much of which is avoidable by you. (This we will discuss next week.)

CHANGE DEPRECIATION

The thief that steps in the moment you purchase your car begins to rob you of your investment. Against its ravages you are helpless. Its extent depends upon the policy of the company that made your car. Change Depreciation robs you of tens of dollars or hundreds of them.

You buy one of the first of a "New Model," rated at, and you paying, 100 cents on the dollar. You take that car, store it, absolutely protected, so that as time goes on its value, from wear and tare or the elements, is not lessened. But every passing during the year in which your car is one of the "Current Issue," it is fast robbed of its value. By the year's end the company that makes your car comes out with "an entirely New Model." They point with pride to the virtues of the "15 to 100 new improvements," and decry the lack of them in the car you paid 100 per cent honest dollars for. Your car is unused, unhurt and yet it is robbed of its value.

It is no longer a "Current Issue." You, against your power, have contributed tens of dollars, possibly hundreds of them, to the "change depreciation fund."

LISTEN

Money sliding from your pocket into the Change Depreciation Fund buys you nothing.

Before you buy a car figure it out.

How many dollars are you willing to contribute that first year to the famed "Change Depreciation Fund?"

Strictly speaking, there is no change depreciation on a Ford car:

Ten years ago, Henry Ford made his first "Model T." Today he is still making it, substantially the same. In ten years' time there is practically no change depreciation in the Ford. For one year's time it is practically nothing. You can make no financial error in buying a Ford.

Ace Garage

SURPRISE FOR "DESERT RAT"

Veteran Prospector Astonished at First Experience With Moving Picture Methods.

A real "desert rat," an old prospector and a rare individual in these modern times, wafted into Victorville, Cal., where a motion picture company was at work. A ranch house had been built, more than 100 sagebrush transplanted to make it look as if it were in the vicinity of the desert, and all the old tin cans in the town collected to give atmosphere to the cookhouse. The old desert rat accosted the movie director in front of the dilapidated place.

"This your farm?" he asked.

The director said it was.

"Any grub about?"

The picture man pointed to the rear of the prop movie house and the visitor followed. When he reached the corner of the house and saw only two walls standing his mouth sagged with amazement. The players were equally surprised when the old desert rat told them he had never seen a movie company at work or knew that the few houses he had seen in motion pictures were of the fake variety.

CLOSED CARS ARE WINNING FAVOR OF PROFESSIONAL MEN

The increasing adaptability of the closed car for all sorts of work

and for various uses in the city and outside of it has surprised many persons who were confident that the closed model could never be anything else than a mere plaything for the women and for the more feminine types of men. Passing years and months have demonstrated the fallacy of such an opinion.

The closed car has come into its own. Professional men are making use of its convenience and comfort every day. Doctors in a great percentage are in favor of this type. Weather such as Oregon has is made much more pleasant with walls of carefully fitted glass and wood about the occupants of the vehicle.

We are now ready to Demonstrate and Deliver.

NASH CARS

Let us show you how this car compares very favorably with many much higher priced six cylinder cars.

Beautiful Designs, Roomy, Easy Riding, Powerful, Speedy, Economical and Durable.

And we have in the same class among the four cylinder cars the

MAXWELL

There are over three hundred thousand of this Wonderful Light Car in use today. Look it over.

Nash — TRUCKS — Maxwell
1 and 2 Ton 1½ Ton

You make no mistake when you buy of us.

Service—Quality—Satisfaction

The Auto Utilities Co.

U. G. BERRY, Mgr.

DALLAS, ORE.

INDEPENDENCE, ORE.