

DEPARTMENT WRITES OF BENNETT APPLE

The 1908 year book, United States department of agriculture, is an usual an interesting and valuable document for the farmer. Among other new fruits described, the Bennett apple is shown, by colored plate. It is of the Winesap group of apples, originated as a seedling in an old fence row on the premises of S. L. Bennett, Medford, Or., about 1883. Ten years later he produced bearing trees by top grafting of this variety. A gold medal was awarded the fruit at the Charleston exposition in 1902, and a silver medal given at the St. Louis fair in 1904. It was first commercially propagated by J. S. Bennett, Central Point, Or., about 1903. Has been planted considerably at Rogue river, Or., the past five years. The fruit is large, rich, sub-acid flavor, juicy, color striped crimson, washed with red on a deep yellow, classed as a red apple and reported to be an early and heavy bearer.

DR. BADE EXCAVATES FOR BIBICAL LORE

BERKELEY, Cal., Oct. 1.—Dr. William F. Bade of the faculty of the Pacific theological seminary of this city, is pursuing excavation work in Egypt for the purpose of procuring data on matters relating to the Bible, according to information just received here by friends. In addition to

being a geologist and archaeologist, Dr. Bade is a well known authority on the Bible. From letters received here it was learned that Dr. Bade is engaged in research work in the vicinity of Cairo. Later he will journey to the upper Nile, where he expects to add considerably to the world's knowledge of the Bible as a result of his studies there.

PENDLETON SCHOOL HAS EXTRA COURSE

OREGON AGRICULTURAL COLLEGE, Corvallis, Or., Oct. 1.—The Pendleton high school has established an agricultural course as one of the regular high school subjects and has requested the co-operation of O. A. C. in making it a success. Plans are requested and an experiment man to conduct the work is desired. This branching out along agricultural and industrial lines among the state high schools is especially gratifying to the O. A. C. faculty. It gives the people of the state a better appreciation of industrial subjects and sends the student to O. A. C. better prepared for the advanced courses.

BOARD OF EQUALIZATION WILL MEET ON OCTOBER 18

County Assessor Grieve gives notice of the meeting of the county board of equalization at Jacksonville Monday, October 18, when the current assessment roll will be pub-

licly examined and all taxpayers given a chance to submit any grievances they may have, and have the same acted upon by the board, composed of, besides the assessor, the clerk and county judge.

It too often happens that taxpayers give no heed to their assessments until time for paying taxes comes on. The time to get your assessment equalized, if you have a grievance, is at the meeting of the board.

PAVING WILL COST \$9 A FOOT SOME PLACES ASHLAND

The board of viewers on appraising the cost of paving to the adjoining property owners are making satisfactory progress in their work, says the Tidings, and are nearly half through with their labors. In certain places, notably on East Main street, the cost will approximate \$9 per front foot, which is probably as high as the improvement will amount to in any given locality. The board consists of Ira Shoudy, E. H. Gould and G. G. Eubanks. It is a careful painstaking job, and in the vicinity of the Plaza especially will call for the display of extra tact and discretion in making equitable findings in the appraisements.

YREKA WILL HAVE A SAVINGS BANK SOON

YREKA, Cal., Oct. 1.—It is stated on what seems to be the best of au-

thority that Yreka will have a savings bank within the very near future, in all probability before the first of the year.

This is a convenience that Yreka has long lacked, as it is known that a great deal of Siskiyou county's money goes down to the San Francisco savings banks, where it will earn a reasonable interest.

Siskiyou offers a great field for investment, with ample security, so that an institution of this character is bound to be a success, not only for the people who are behind it, but for the general public.

FAIR NEARLY READY TO COME TO ITS CLOSE

SEATTLE, Oct. 1.—With the closing of the Alaska-Yukon-Pacific exposition at Seattle but a short time away, the attractions out at the grounds and about the city still please the crowds visiting the exhibition the closing days.

Special events come thick and fast at the fair. The musical programs, parades, fireworks and other features are daily offerings. The night illumination of the buildings and grounds is the grandest sight ever witnessed in the west.

The parks of the city are always open to strangers and the sightseeing cars and automobiles are doing a rushing business.



"For you particular customers who demand the best groceries, we recommend Folgers Golden Gate Coffee."

It is so good we cannot obtain a better coffee—not if we paid \$1 a pound for it.

Everything about Folger's Golden Gate Coffee is perfect, and we sell it with the positive guarantee that it will please you.

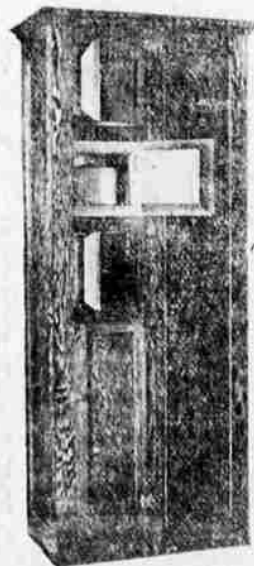
Allen & Reagan

GROCERIES, CHINAWARE, FRUIT AND FEED.

PUBLIC DEMONSTRATION

Tomorrow, Saturday, October 2

COMBINATION RANGE BOILER INSULATOR AND HOT FIRELESS COOKER



At AIKIN'S PLUMBING ESTABLISHMENT
Next Door to the
Condor Water Power Co.

Every lady in the city cordially invited to call.

Refreshments cooked in this wonderful cabinet will be served to visitors.

Be sure and come whether you need one now or not. Don't forget the place.

J. W. WHITNEY, Dist. Mgr.

When we suggest that you
**Toast Your Bread
On Breakfast Table**

We do not mean that you should eat off the stove—toast

With an Electric Toaster

and have crisp, brown, delicious toast—costs 1c per meal to operate. We have the best toaster on the market for sale at \$4.50. Clean, appetizing, sanitary

ROGUE RIVER ELECTRIC CO.

Successors to Condor Water & Power Co.



State Depository
Established 1888.
Capital and Surplus \$125,000
Resources \$700,000

HIGHEST ATTAINMENT IN SYSTEMATIC BANKING SERVICE

The Jackson County Bank respectfully solicits your account, subject to your check, with the strongest guarantee of safety and efficiency. We offer the highest attainment in systematic banking service, which assures the greatest care in every financial transaction, with this obliging institution.

W. I. VAWTER, President.
G. R. LINDLEY, Cashier.

APPLES AND PEARS AND ALL KINDS OF FRUIT AND ORNAMENTAL TREES.

YAKIMA VALLEY NURSERY

Largest Commercial Nursery in the Pacific Northwest. Not in the combine. Competes with all first-class nurseries.

L. E. HOOVER, Agent

MEDFORD, OREGON

J. E. ENYART, President
JOHN S. ORTH, Cashier

J. A. PERRY, Vice-President.
W. B. JACKSON, Ass't Cashier.

THE MEDFORD NATIONAL BANK

CAPITAL \$50,000
SURPLUS \$10,000

Safety boxes for rent. A general Banking Business transacted.

We solicit your patronage.