

ORDINANCE 212.

An ordinance providing for the execution of a contract with Vincent & Baker for excavating and backfilling trenches and furnishing and laying pipe and placing hydrants and other equipment in a construction of water mains along and in a number of the streets of the city of Medford particularly enumerated and in said ordinance and providing the terms of said contract.

The city of Medford doth ordain as follows:

Section 1. That the corporation of Vincent & Baker, a co-partnership, for laying water mains on the streets in the city of Medford hereinafter specified, including excavating and backfilling trenches, furnishing, hauling and laying pipe, and placing hydrants, gate valves, tees, elbows and crosses be and the same is hereby accepted, and the mayor and recorder are hereby authorized and instructed to enter into and sign a contract in the form and manner hereinafter set forth, and such action by such mayor and recorder is hereby expressly authorized, ratified and confirmed.

This agreement, made and entered into this 29th day of July, 1909, by and between Vincent & Baker, a co-partnership, hereinafter named as the contractor, and the city of Medford, a municipal corporation, hereinafter called the city.

Witnesseth: That in consideration of the covenants hereinafter set forth, the contractor hereby, undertakes and covenants to furnish all necessary materials and labor and do all work of excavating and backfilling ditches, hauling and laying pipe and placing hydrants, gate valves, crosses, tees and elbows on the following streets and avenues in the city of Medford, Oregon, to-wit:

A 4-inch main on West Eleventh street, between Oakdale avenue, South, and South Laurel street.

A 6-inch main on Dakota avenue from Mistletoe to Oakdale avenue, South.

A 4-inch main on Mistletoe from Eleventh street west to Dakota avenue.

A 4-inch main on King street from Eleventh street west to Dakota avenue.

A 4-inch main on Laurel street south from West Eleventh street to Twelfth.

A 4-inch main west on Twelfth street on Laurel street south to South Mistletoe.

A 6-inch main on South Orange street from West Main to West Eleventh street.

A 4-inch main on Newtown street from West Main to West Eighth street.

A 4-inch main on Mistletoe street from West Main to West Tenth street.

An 8-inch main on West Main street from Laurel street, South to west corporation boundary.

A 4-inch main on West Fourth street from North Orange street to west corporation boundary.

A 4-inch main on Summit avenue between West Main and West Fourth streets.

A 4-inch main on Ross court between West Main and West Fourth streets.

A 4-inch main on Rose avenue between West Main and West Fourth streets.

A 4-inch main on North Peach street between West Main and West Fourth streets.

A 6-inch main on West Second street from North Oakdale avenue to west corporation boundary.

A 4-inch main on Olson street between West Fourth and West Second street.

A 6-inch main on Grape street from West Main north to Jackson street.

A 6-inch main on Jackson street west from Grape street north to west corporation boundary.

A 6-inch main on west corporation boundary between Fourth and Jackson streets West.

A 6-inch main from southeast corner of Gray's addition north to Clark street.

A 6-inch main on Clark street west to west corporation boundary south to city limits.

A 6-inch main from intersection of Clark street West and corporation boundary south to Jackson street West.

A 6-inch main on Central avenue North between Second street and corporation boundary.

A 6-inch main on Riverside avenue from Jackson street East to north corporation boundary.

A 6-inch main on north corporation boundary between Riverside avenue and Court street.

A 6-inch main on Roosevelt avenue from East Main street to corporation boundary.

A 6-inch main on Central avenue South from end of present main to south boundary.

A 4-inch main on Fir street South from Twelfth street to corporation

A B C D E F

The A B C of Gasoline Engines

Alamo gasoline engines belong at the head of the list in engines as much as A belongs at the head of the alphabet. Because wherever they have been demonstrated they have taken the first prizes absolutely on their merits. Can you afford to use any but the best grade of gasoline engines for irrigation or other purposes?

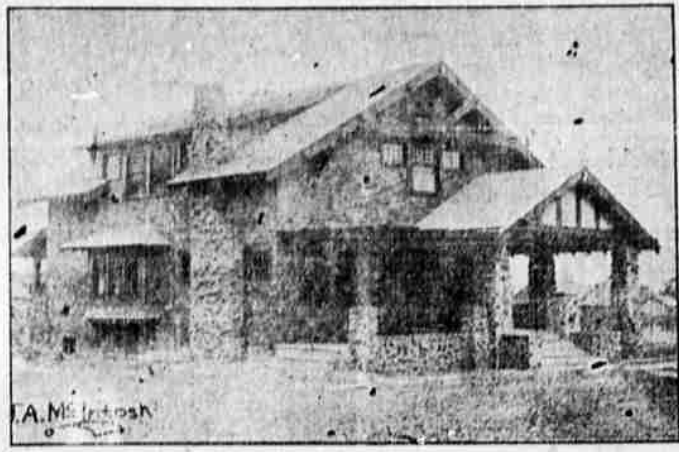


The Alamo engine has been selected by the State University at Eugene, and also by the Oregon Agricultural College at Corvallis, as the best engine adapted to demonstrate the latest and most approved principles of gas engine practice to the students. Our 3-h.p. Alamo Victor vertical electric lighting outfit was selected by the Southern Pacific Company to light the demonstration train which toured the Willamette valley last fall under the direction of the Agricultural College, and these people were so well pleased with the Alamo engine that it was again selected by them to light the demonstration train which recently toured Southern Oregon. The Westinghouse Electric Company and the Northern Electric Company, which as you know are the two largest manufacturers of electrical goods in America, have both adopted the Alamo gasoline engine, and now recommend them and illustrate them in their bulletins. A complete stock of engines, together with a full line of extra parts, is always available at Portland. If you will inform us concerning the exact use for which you wish the engine, we will be pleased to furnish you gratis what information we can concerning the necessary horse power. We have had a great deal of experience in making installations of all sizes, and no doubt can be of some assistance to you.

Rogue River Power and Machinery Co.

31 BARTLETT STREET
WE DO COMMERCIAL WOOD SAWING.

R Q P O N



Mr. Investor—Have you seen the modern home—seven rooms in the space and cost of four rooms; iceless refrigerator, built-in buffets and dressers; cabinet kitchen.

J. A. McINTOSH, Architect.

Third Floor Medford National Bank Building.

IF YOU INTEND TO BUILD A COMFORTABLE HOME

Cool for Summer and warm for winter—then build a good solid comfortable EASTERN HOUSE—two stories and garret; this can be built for the same price as a bungalow—come and see

WILLIAM WINKEL, Architect, General Contractor, 30 years' experience—First Class Workmanship Warranted. Plans and Specifications Free of Charge—Orders Expected at Residence, 244 West Fourth Street, Corner of Ivy Street, or at 103 Main St., J. W. DRESSER'S OFFICE.

Why Not Be Comfortable



and do away with that hot, stuffy atmosphere in your store, office or home.

Invest in a G. E. Fan

and get the best—something that will last a lifetime with proper care. Cost of operation only 1/2c to 1c per hour.

12-inch size \$15.00; 16-inch size, \$20.00; 4 Bld. Ceiling, \$36.00

ROGUE RIVER ELECTRIC CO.

Successors to Condor Water & Power Co.

WANTED

Timber and Coal Lands

ENGINEERING AND SURVEYING CONTRACTS TAKEN AND ESTIMATES FURNISHED.

B. H. Harris & Co.

MEDFORD, OREGON
Office in Jackson County Bank Upstairs

GET AHEAD OF THE HOT SEASON.

You can bid defiance to the heat by having an electric fan put in position. It doesn't cost very much, either. If you haven't one, we can fix you up in a short time, at the least expense. We're general electricians, and do all classes of work in our line in the most thorough manner. Jobbing skillfully and promptly executed at lowest charges. Portable lamps in all varieties.

ROGUE RIVER ELECTRICAL CONSTRUCTION CO.

boundary.

Said contractor agrees to place all hydrants and gate valves and all crosses, tees and elbows at the points indicated on the plans and specifications for said work on file at the office of the city recorder of said city, and to perform all of said work in a first-class substantial and workmanlike manner in accordance with the plans and specifications therefor on file in the office of the city recorder, which plans and specifications have been adopted by the city council for such work and upon the terms and conditions in said plans and specifications set forth, which said plans and specifications are hereby expressly referred to and made a part of this agreement.

And in consideration therefor the said city agrees to pay said contractor at the following rates:

For 4-inch water main, per lineal foot, \$1.18.

For 6-inch water main, per lineal foot, \$1.18.

For 8-inch water main, per lineal foot, \$1.65.

For hydrants, each (Corey), \$61.59 Reducers, 6 to 4, \$7.

For gate valves, each, 4-inch, \$11.40; 6-inch, \$18.25; 8-inch, \$27.70.

For crosses, each, 4-inchx4-inch, \$9.80; 4-inchx6-inch, \$12; 6-inchx6-inch, \$14.10; 6-inchx8-inch, \$22.40.

For tees, each, 4x4x4, \$7.60; 4x6x4, \$8.10; 6x4x6, \$10.35; 6x6x6, \$11; 8x4x8, \$16.40; 8x6x8, \$17.75.

Plugs, 4-inch, 80 cents; 6-inch \$1; 8-inch, \$5.

It is further agreed that payments provided for on the estimates mentioned in the plans and specifications shall be made by said city at the time and in the amount named in said specifications in lawful money or its equivalent, payable in the following manner, to-wit:

Eighty per cent (80 per cent) of all material furnished and labor performed according to estimates furnished by contractor and approved by city engineer, which said eighty per cent shall become due and payable from said city to said contractor on the 10th day of each and every calendar month. Balance to be paid as per specifications.

It is further agreed that the said party of the first part, the contractor named above, shall furnish a bond for the faithful performance of this contract to be approved by the mayor of said city for the sum of \$15,000, having as surety thereon some surety company authorized to do business in the state of Oregon guaranteeing the faithful performance of this contract and further providing for the indemnifying of said city against any claims or liens for labor, work or materials on account of all sub-con-

tractors, material men, laborers and others furnishing labor or material on this contract.

It is further agreed that said work shall be commenced and prosecuted with all reasonable diligence and dispatch and that all of said work shall be completed on or before December 20th, 1909.

In testimony whereof the parties have caused these presents to be executed on their behalf respectively on the day and year above written.

VINCENT & BAKER, by SHIRLEY BAKER, by C. D. VINCENT, by W. I. VAWTER, Attorney in Fact.

Contractor.

CITY OF MEDFORD, By W. H. CANON, Mayor.

Attest: BENJ. M. COLLINS, City Recorder.

The foregoing ordinance was passed by the city council of the city of Medford, Oregon, this 20th day of July, 1909, by the following vote, to-wit: Welch ave, Merrick ave, Emerick ave, Wortman ave, Eiffert ave and Demmer ave.

Approved July 20th, 1909.
W. H. CANON, Mayor.

Attest: BENJ. M. COLLINS, City Recorder.

Why is the Spot cafe crowded to the limit of its seating capacity every day? Try their Sunday dinner and you will know the reason.

NOTICE

Is hereby given that the undersigned will apply at the regular meeting of the city council of Medford, Oregon, on August 3, 1909, for license to sell malt, vinous and spirituous liquors in less quantities than one gallon for six months at lot 13, block 20, in Medford, Oregon, for a period of six months.

H. O. WILKINSON.
Dated July 21, 1909.

NOTICE

Is hereby given that the undersigned will apply at the regular meeting of the city council of Medford, Oregon, on August 3, 1909, for license to sell malt, vinous and spirituous liquors in less quantities than one gallon for 6 months at lot 11, block 20, in Medford, Oregon, for a period of 6 months.

W. M. KENNEDY
Dated July 17, 1909.

NOTICE

Water bills for June and prior thereto, not paid by the 2d of August, will necessitate the shutting off of water without further notice.

BENJ. M. COLLINS,
City Recorder.
By R. W. T.

115

Orders for sweet cream or butter-milk promptly filled. Phone the creamery.

A Bargain

The famous 120-acre

I. W. THOMAS GROVE FARM

85 acres of alfalfa garden, 20 acres of the prettiest oak and laurel grove in the valley, 15 acres of apples and pears in bearing, and loaded with fruit at the present time.

This is the best proposition ever offered in Southern Oregon.

See

WHITE & TROBRIDGE

Exclusive Agents, for prices, terms, etc., at office,

Phone 93 6 Fir street Medford