

# B Cash & Store C

## IT FILLED THE BILL

Our 25 CENT COFFEE gives the best satisfaction.

"I want the best at the lowest price and 121 coffee fills the bill."

Don't this interest you, if you can save 10 or 15 cents on each pound of coffee you use?

# B. & C. Cash Store

Telephone 2351. 223 West Main Street.



### RESOLVED

The best resolution for you to make is to come to us for your next suit, if you want something out of the ordinary. We do the best work and charge the lowest prices.

**W. W. EIFERT**  
THE PROGRESSIVE TAILOR



### GET AHEAD OF THE HOT SEASON.

You can bid defiance to the heat by having an electric fan put in position. It doesn't cost very much, either. If you haven't one, we can fix you up in a short time, at the least expense. We're general electricians, and do all classes of work in our line in the most thorough manner. Jobbing skillfully and promptly executed at lowest charges. Portable lamps in all varieties.

**ROGUE RIVER ELECTRICAL CONSTRUCTION CO.**

### Jackson County Bank

MEDFORD, OREGON

State Depository  
Established 1888.  
Capital and Surplus \$125,000  
Reserves \$700,000

### HIGHEST ATTAINMENT IN SYSTEMATIC BANKING SERVICE

The Jackson County Bank respectfully solicits your account, subject to your check, with the strongest guarantee of safety and efficiency.

We offer the highest attainment in systematic banking service, which assures the greatest care in every financial transaction, with this obliging institution.

W. I. VAWTER, President.  
G. R. LINDLEY, Cashier.

Kewanee Pneumatic Water Systems, Fairbanks-Morse Gasoline Engines and Pumping Outfits.

Western Electric Co. Motors and Dynamos, Pipes and Fittings, Ball Room Fittings, White Steam Cars.

Glad at any time to give estimates on outfits installed.

Write or call for free descriptive catalogue.

**E. A. WASHBURNE & SON**

Miles Block Medford, Oregon

## The Oregon Building is one of the Feature Exhibits at the Exposition

Attracts Much Attention and Favorable Comment—Panorama of Oregon

Is Cleverly Executed—Much Wheat Used in

Novel Display.

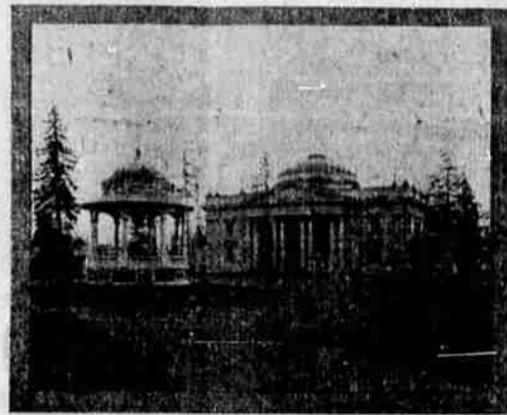
OREGON BUILDING. Alaska-Yukon-Pacific Exposition, Seattle, July 23. — (Special Correspondence.) — The mural decoration of the ponderous glass-covered dome of the Oregon building has come in for attention as one of the "feature" exhibits. It has been nationally advertised as a rare novelty, inasmuch as its component parts being all strictly Oregon products, and unusually versatile at that, illustrates best of all the industrious husbandry of the Beaver state.

Like a royal crowd, studded with the best gems of wealth-producing products, the 150-foot dome surmounts the center of the building;

the border of the seal and the sun's rays are Siberian millet. Red apples, bending low the boughs of the typical Oregon orchard, are made of red pepper. The green of the luxuriant hopfields showing the plentiful and full white pods is alsyke.

### Field of Grain.

An extensive field of grain, with a wide-sweeping landscape, is shown with a combined reaper and harvester with the border of the field at the ceiling edge in full-length shocked grain. The blending of the field with the ripe grain at the edge of the picture is most artistically done. Distant hills in the background are outlined in spurrey, a forage seed, which



Within the brilliantly-lighted enclosure is a picture story that many people come to see exclusively. The key of the continuous panorama around the dome is the state seal, with its suggestive motto of absolute independence. "She flies with her own wings." It would be difficult to imagine what more striking method could have been devised for decorating the crown of the beautiful state building to arrest attention and direct the thoughtful to the immensity of the grain growing sections, the variety of husbandry and the wealth suggested by the production of cattle raising, fruit growing, logging, mining, sheep raising, hop culture, poultry farming, fish and game, dairy, manufacturing and transportation. To the observant eye the transportation situation in Oregon must be striking as it is suggested by the representation of a train running alongside steamers along the Columbia gorge, laden from the wheat fields of the Inland Empire "on the water grade."

### Picture a Reality.

The panorama of Oregon is frequently taken for oil-tones and the mistake is excusable. But, instead of canvasses, the picture is a reality made of a ton of seed grains and oats, barley and wheat, in the shock, and by the clever manipulation of an artist, W. E. Benton, with meticulous hand work and many layers of them being used, pearly barley, wheat, corn, millet, poppy, spurrey, red pepper, timothys, white clover, beans, apples, prunes, hops, tufted wool and grass were spread into such even shades that the composite picture looks like it had been painted.

The shield of the seal is made up of red and white corn. The gray and white of the eagle's wings and breast is done in pearl barley. The gold of

when applied in proper quantities appear to secure all the color gradations of delicate mauve to black and black-gray, ranging from a water color to the blackness of a distant forest designed in grains of corn and peppers, wave in deep meadows. The background of the grain fields are wooded foothills, where a lonely, but kinglike pheasant perches upon a fallen monarch of the woods. Seven layers of various blended seeds, sprayed or sometimes pasted on by hand, upon a coating of glue, were necessary to secure just the right shades. A large section of the northeast view discloses the sweep of the Columbia river with the Tunnel rock, Onion rock, Multnomah falls and other well known scenic features. The leaping cascades are reproduced in pearly barley seeds, the foam of the breakers being quite realistic. Steamers upon the river, while in the vicinity of Mount Hood a modern aeroplane is headed toward Portland. This suggestion of the conquering of the mountain ranges, if not actually in existence, it may be remarked, is not so remote as may at first be thought. The ceiling of the first floor of the building is done into a literal plaster of Oregon No. 1 wheat, while the columns supporting the upper floor of the building and around the dome are faced with glass fronts, behind which all sorts of grains are packed, giving an impression to a casual beholder of a ionerete structure of grain. The whole exhibit, including the gigantic Oregon beaver, in prunes, and the robust figure of an Oregon sheep, standing 12 feet high receives much commendatory attention and none more so than the man from home who feels that at last, after several trials, Oregon has a fit building and a proper exhibit to show it in at a national exposition.

### 105 INDICTMENTS FOR GRAFT IN CHICAGO RETURNED

CHICAGO, July 23.—One hundred and five graft indictments, involving more than 300 persons, were returned yesterday by the July grand jury before Judge Kiekham Scanlan in the criminal court in State's Attorney John E. Wayman's war on graft—the greatest mass of indictments ever voted in one day in Cook county.

Graft in the levee districts, graft in saloons and slot machines in the

country towns and graft in Chinese gambling were struck a terrific blow by the grand jury's action.

In political circles it was the sensation of the day, for experienced politicians saw in this the start of a great campaign engineered chiefly by the state's attorney's office against the city administration.

Huge as was the day's grist of true bills, it was reported that these were only a starter and that Mr. Wayman was hot after "men higher up" in the world of graft. It was reported that the prosecutor hoped that some of these small fry would confess.



"For you particular customers who demand the best groceries, we recommend Folger's Golden Gate Coffee."

It is so good we cannot obtain a better coffee—not if we paid \$1 a pound for it.

Everything about Folger's Golden Gate Coffee is perfect, and we sell it with the positive guarantee that it will please you.

# Allen & Reagan

GROCERIES, CHINAWARE, FRUIT AND FEED.

## THE SPOT CAFE

The Best of Everything Served  
When you want it  
The way you want it

REGULAR DINNER 25c Short Orders It All Hours  
EAST MAIN STREET

## TEN REASONS WHY You Should Be a Reader of The Pacific Monthly

1st. It is the leading magazine of Western America, published on the Pacific coast edited by western men and its entire contents are Western. With pen, brush and camera, it tells the story of the wonderful progress of the West.

2nd. No other section of the entire world is experiencing such a rapid industrial and commercial growth as that section of the United States west of the Rockies. It is a duty you owe to yourself to keep informed—The Pacific Monthly completely covers the field.

3rd. There are opportunities for the extension of practically every line of business in this territory, and The Pacific Monthly tells of these opportunities.

4th. If you are looking for a chance to invest or locate—commerce, farming, orcharding or professional work, if you are worn, tired or in ill health, seeking rest or reasonable, The Pacific Monthly will give you a thousand valuable hints.

5th. Here also you can get close to nature. The great snow-capped mountains, in all their rugged grandeur, the boundless plains and the virgin forests, "God's Country," untarnished by the hand of man. Do you not wish to spend a few hours each month with us?

6th. The best of western literature to be found in the Pacific Monthly. Live topics of THE DAY, stories of progress and of opportunities, the Romance of the mountains and the plains, always intensely human.

7th. One never tires of beautiful pictures and the Pacific Monthly is famous for its illustrations, always a veritable picture book of Western scenery, from Mexico to Alaska and from Denver to the coast. No expense is spared in securing the most striking photos for reproduction in colors and halftones.

8th. The Pacific Monthly should be in every home. From cover to cover it is clean wholesome reading of an educational nature. It is particularly interesting and valuable both to teacher and students.

9th. Look upon your map, note the great area west of the Rockies, think of the wonderful resources of this section of the country—thousands of acres of agriculture land, billions of feet of standing timber, mineral riches beyond comprehension, extending to the shores of the mighty Pacific, the highway to the Orient—Do you not want to know more about this marvelous country?

10th. A spirit of optimism prevails throughout the west that lends life and vigor to all. That is why the Pacific Monthly is different. It comes to you each month breathing this spirit of the west. It will put the red blood into your veins—try it.

Sample copies at the Tribune office where subscriptions can be left.

MEDFORD DAILY TRIBUNE FOR THREE MONTHS \$1.50.  
THE PACIFIC MONTHLY ONE YEAR ..... \$1.50  
BOTH FOR ..... \$2.00

## Advertise in the Tribune