

ORIENTAL PALACE AND MANUFACTURERS BUILDING.

The Palace of Oriental Exhibits and Manufacturers Building have a frontage on Cascade Court and Geyser Basin and look across at Foreign Exhibits and Agricultural Palaces; Yukon Avenue separates these magnificent display buildings, and in the back ground the state buildings of Oregon and California are located.

Construction work on these buildings was completed last year and exhibits are being received and placed in position. The Oriental Palace will house the most valuable collection of Far Eastern art that has ever been sent from the Orient, and will present displays from Japan, China, India, Ceylon, Straits Settlements, French Indo China, Borneo, Java and all the eastern countries of Asia.

The Manufacturers building encloses a vast amount of exhibit space and every foot of this has been engaged for display purposes by domestic and foreign manufacturers. The interest manifested in this department of the Alaska-Yukon-Pacific Exposition is world-wide and competitive displays will be general and comprehensive. Exhibits are being daily received and the heavy work of installation is rapidly being accomplished.

ASHLAND BREVITIES.

(The Tidings.)

G. S. Butler, who owns the frontage on Main street, opposite the foot of Granite, between the new Werth-Stock concrete block and the Beach block, began work today tearing out the wooden building now occupying the place and placing the concrete foundation for a substantial new two story and basement block which will rise immediately over the waters of Ashland creek at this point. This makes three fine new concrete buildings under construction at this point. It is understood that Mr. Butler has leased the entire building in advance for a term of three years.

G. W. Cole, the carpenter, has a neat new five-room cottage building for Mr. L. Hilty on choice lots on Union street. It will be up-to-date in every respect with all the modern conveniences.

The superstructure of the big new natatorium is nearly completed, and some idea of the immensity of the building may be had from a near inspection of it. The covering of iron is now being placed on the wood-work, and a force of hands are busy at the interior finishings.

The Southern Pacific pay car came in from the south last evening and passed out monthly checks to the army of employes in the various departments. An unusually large number of employes welcomed the paymaster at Ashland, including a big force of extra men employed on the Siskiyou in maintenance of way work, who came down to get their pay.

The Portland Journal of Friday says that a special train of Texas bankers arriving at Portland that day on a tour of the northwest reported that one of the most delightful surprises of their trip was to find a large delegation of Ashland citizens at the depot there, who presented them with fruits and flowers. The Texans say that they have never seen or tasted any fruit—especially cherries, so delicious as those of Ashland.

William Lindsay, a popular and substantial young farmer and stock-raiser of this vicinity, returned home Thursday evening from a visit to Fresno, Cal., and, to the surprise of numerous friends, brought with him a bride, who was Miss Joan Williamson, the sweetheart of his youth, to whom he was married June 24 at Fresno. The happy couple will make their home at the Lindsay ranch at Lilygen.

The Brown brothers—J. C. and Charles A.—who recently disposed of their Terrace street property and went to Washington on a prospecting tour, returned to Ashland last Thursday, direct from Spokane. They were not visibly impressed with conditions prevailing in the northern country, and return to this section convinced that it is the mode spot for a permanent home.

Mrs. Morse of Miami, Miss Hardinger of Patterson, and Miss Grady of Columbia, all from Missouri, relatives and friends of the C. A. Powell family, have been recent visitors here, and their stay was made enjoyable by the scenic attractions in the vicinity. The excursionists were accompanied by Mrs. Morse, and have been touring the coast, including the Seattle exposition. They left for home last Friday, south-bound, intending to visit California points on the return trip.

Grand Exalted Ruler J. U. Sammis of the Elks, who was elected to this honor at Los Angeles last Tuesday, will arrive in Portland with a party of 18 big Elks Saturday, July 24, passing through Ashland en route. They will spend the day there, and then visit the A.-Y.-P. fair. Sammis received the solid endorsement of the Portland delegates to the grand lodge and he will be entertained in a manner befitting his rank while in that city. The itinerary of the Sammis party calls for the arrival of it in the Rose City from San Francisco at 7:15 a. m. Saturday. They will remain there until 10 o'clock Sunday morning. Grand Exalted Ruler Sammis' home is Lemars, Ia.

According to newspaper reports, which have been received in Ashland, "Billy" Hulen, the ballplayer who has many friends here, met with a serious accident on the diamond recently at Medicine Hat, in the Northwest territory, while playing ball. He was hit in the eye with a ball, which resulted in an injury which destroyed the sight entirely, causing his permanent retirement from the diamond.

Patsy B. Fitzpatrick, an old time engineer on the Southern Pacific road across the Siskiyou between Ashland and Dunsmuir, is visiting here after an absence of 15 years, and with his happy little family of wife and three children, accumulated since leaving Ashland, is a guest of the W. K. Smith family. The genial Patsy, after leaving Ashland, worked at the Union iron works at San Francisco, helping to build the battleship "Oregon," and then entered the employ of the Santa Fe railroad, and for years past has been running a locomotive out of Point Richmond until one day last March while on his run he met with an accident from which he barely escaped with his life and from which he has not yet sufficiently recovered to enable him to return to work. Patsy says Ashland is the best place on earth to live, according to his notion, and his ambition is to make it his home again some time.

The Professor Remembers.

Professor (as the company is breaking up, missing one of his rubbers)—Has any of you gentlemen put on three rubbers by mistake?—Fleegende Blatter.

The Slippery Top.

Silliness—We are told there is plenty of room at the top. I wonder why it is. Cyndie—I suppose most of the people who get there fall off.—Philly-Belle Record.

Not As De Baire.

"Are there any rubbers?" "Yes, there are." "There are older people than you."—Philly-Belle Record.

CONSERVATION MEET TO BE LARGE AFFAIR

Prominent Men From All Parts of Country to Meet in Seattle in August.

SEATTLE, Wash., July 21.—The executive board of the Washington Conservation association has about completed an elaborate program for the first national conservation congress of the United States, to be held in the auditorium of the Alaska-Yukon-Pacific exposition August 26, 27, 28. A list of speakers covering practically every subject of national conservation importance has been arranged, and scores of prominent men from almost every state in the Union have announced their intention of being present.

Among those who have accepted invitations to address the congress are Hon. R. A. Ballinger, secretary of the interior; Booker T. Washington, president of the Tuskegee institute; William McCarroll of the public service commission, New York city; C. C. Dickinson, president of the Carnegie Steel trust; W. B. Kavanaugh, president of the Lakes-to-the-Gulf Deep Waterways commission; James A. Emery, chief consul, National Manufacturers' association; Cyrus Northrup, president of the University of Minnesota, and Howard Elliott and James J. Hill, the great railroad men of the northwest.

The conservation congress is the first of its kind ever held in the United States. It will probably elect delegates to the international conservation conference to be held at The Hague the coming autumn. It is the first united effort at bringing together all of the commercial organizations of the United States. The Washington Conservation association and the Seattle chamber of commerce have co-operated and extended an invitation to every commercial organization in the larger cities to send at least two accredited delegates to the congress.

The campaign for this congress has gone into every field of prominence where men are thinking about conservation. Special engraved invitations have been sent to presidents of colleges, ministers of the gospel, state conservation commissions, governors of states, United States senators and representatives, cabinet officers and heads of departments at the national capital.

The state legislature has memorialized President Taft and requested his attendance at the congress of conservationists.

REAL SETTLER IS THE FAVORITE

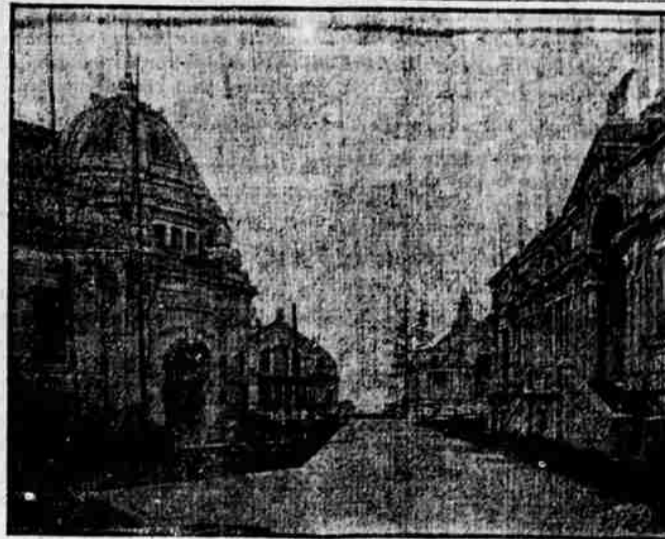
Policy on Reserve Homesteads Will Give Speculator the Short End.

SEATTLE, Wash., July 21.—In speaking of the opening of the Spokane, Coeur d'Alene and Flathead Indian reservations after the drawing, which will be held next month, Fred Dennett, commissioner of the general land office at Washington, D. C., said last night:

"The policy of the government is to protect the bona fide settler as far as possible and to prevent the speculator from acquiring title to government lands without proper compliance with the law. The interests of any community are injured by the acquisition of land by persons who do not intend to live thereon. The settler loses a neighbor, who would otherwise aid him in building roads and in the establishment of school districts, and the merchant loses a customer, who under all rights should be on the land, putting it to its best purposes."

FLEAS ARE DENOUNCED AS DISEASE CARRIERS

WASHINGTON, July 20.—How fleas as guests get mixed with resulting complexities in the spread of infection in this county is pointed out in a report received by the public health service from former Assistant Surgeon George W. McCoy and Maurice B. Mitzman of San Francisco. As examples of the accidental distribution of these insects the report says that rat fleas have been found on squirrels and squirrel fleas on rats. As both rats and squirrels showing plague infection have been found in California, the plague may be carried from one of these rodents to the other by means of fleas. All these fleas readily feed on human blood. The report says there is good reason for suspecting that plague among the ground squirrels in California originated from plague among rats through the migration of fleas. Experiments made in various ways indicate that fleas from rodents will adapt themselves to a host of different species. The investigations also demonstrate that fleas from squirrels will attack rats even in the presence of their usual hosts.



LOOKING DOWN YUKON AVENUE.

One of the most traveled highways of the Alaska-Yukon-Pacific Exposition will be the street to which has been given the name of Yukon Avenue. Yukon Avenue makes its way across the exposition grounds from west to east, and the ends are represented by Klondike Circle near the entrance, and Nome Circle on which fronts the classic Forestry building. It crosses the roaring Cascades on oriental bridges of handsome design, and from its central part the buildings of Hawaii and Alaska, backed by the enormous federal structure, are directly to the north.

Just to the west of Klondike Circle the Pay Streak winds in a general direction from north to south, and at the eastern end the land gives way precipitously to the shores of Lake Washington. It is on this beautiful shore of the lake the natural amphitheatre is located, and nature has so quaintly formed this delightful spot, that small effort has been required of man to transform it into as perfect an exhibition place as is possible. Its curving, sloping sides complete a semi-circle, and from its tiers of towering seats 30,000 spectators may witness the entertainments with no possibilities of occupying a single undesirable seat.

A wonderful variety of architectural display is shown by the many buildings through which Yukon Avenue passes, and during its course the visitor passes from man-made monuments through parts of magnificent forests whose grandeur has never been marred by the destructive craft of Mammon's disciples. From every side the line of horizon is defined by mountains whose lines are delineated in perpetual snow, and stretching away as far as the eye can travel rest the waters of Puget Sound.

We Are At Work

No vacation for us. The hot weather doesn't stop us from work.

REDDY & BUTLER

P. C. Hansen.

Tom Moffat.

We make any kind and style of windows. We carry

glass of any size on hand.

Medford Sash & Door Co.

Mrs. Irene Hampton Isaacs

Instructor of Piano, Liszt Method

Studio at Residence, North Orange Street

United Wireless

Stock in the United Wireless Co. is selling at \$30 per share but will advance to \$35 on or before August first. If you have money to invest, this is the opportunity of a life time.

Cusick Myers & Sharp

GENERAL AGENTS

Phone 761

Medford

THE SAVOY

TONIGHT

THE OYSTERMAN'S GOLD
MARY JANE IN THE COUNTRY
TEN NIGHTS IN A BARROOM
Tonight is premium night.

ONE DIME

APPLES AND PEARS AND ALL KINDS OF FRUIT AND ORNAMENTAL TREES.

YAKIMA VALLEY NURSERY

Largest Commercial Nursery in the Pacific Northwest. Not in the combine. Competes with all first-class nurseries.

L. E. HOOVER, Agent

MEDFORD,

OREGON

J. E. ENYART, President J. A. PERRY, Vice-President.
JOHN S. ORTH, Cashier. W. B. JACKSON, Ass't Cashier.

THE MEDFORD NATIONAL BANK

CAPITAL \$50,000
SURPLUS \$10,000

Safety boxes for rent. A general Banking Business transacted.

We solicit your patronage.

The Tribune is Up-To-Date