

ENGAGEMENT EXTRAORDINARY

THE MEDFORD THEATER
 One Performance - - - Saturday, January 2nd.

Mr. JOHN CORT Presenting the Great Comic Opera Success

THE ALASKAN

A Splendid Cast of Artistic Principals Headed by Edward Martindale

as
TOTEM POLE PETE

also
LAURA LIEB

Prima Doma Soprano

60 SINGERS 60

in the Ensembles

\$20,000 worth of Furs

Company Carries its Own Orchestra



Medford is the Only City in Oregon in which this Company Playes Outside of Portland

In order to secure this attraction Manager Hazelrigg was obliged to give **\$600 GUARANTEE**

A SPECIAL TRAIN OF TWO BAGGAGE CARS AND TWO SLEEPERS

Prices = 50c = 1.00 = 1.50
 Seats Now On Sale at Haskins' Drug Store. Curtain at 8:45 p. m.

TRYING TO BAR OPIUM

Many Delegates Gather in Shanghai to Attend International Congress

SHANGHAI, Dec. 21.—Distinguished delegates from many nations are here today to take part in the international conference at which the powers are to fix upon the details for the cessation of the cultivation of opium within their territories in order to assist China in the suppression of the use of opium among the Chinese people.

The Chinese delegates are practical, English-speaking men, one of them being an ex-consul general at Singapore, one a doctor educated abroad, and one a railway director well qualified to undertake preparatory work. It is expected that the Chinese government will hereafter be represented by an official of high rank, proportionate to the importance of this national question.

Missionary doctors continue to report a large increase in the sale of anti-opium remedies, which, containing morphine, produce results worse than opium smoking. It is evidently desirable that effective measures should be taken by the Chinese government to prevent the illicit importation and sale of morphine, and especially is it desirable that Japan, following the example of other nations, should prohibit the export of morphine to China.

Prohibition drives man and woman to the use of cocaine, morphine, opium and other drugs, according to Dr. Hamilton E. Wright, one of the three United States commissioners to the international opium congress.

Dr. Wright declares he has found the drug habit to be advanced further in those states having strict anti-liquor laws, while in the "wet" states the reverse is the case.

into the United States since 1873, though there was a larger Chinese population then than now and the laws against its importation were not so severe.

The importation of the crude product in the past five years has increased 1,000,000 pounds, he says.

The Chinese physicians, he declares, are leaders in the effort to find a cure for the opium habit. They are now using a cure discovered not long ago in Shanghai, and they claim for it success. The new cure is being tested officially in New York.

Dr. Wright's studies have developed that 50 per cent of the Chinese in the United States habitually use the drug, 30 per cent occasionally, nearly 20 per cent on rare occasions and a few refrain from its use. Seventy-five per cent of the opium brought into the United States is made into morphine and 90 per cent of that drug is sold illicitly, according to Dr. Wright.

Several parties hereabouts have been subpoenaed as witnesses in the homestead contests now on, and they will now have full opportunity to make good their tale told to the injury of deservng homesteaders. It is about time a stop was put to these malicious reports, for no men have been more self-sacrificing or faithful than these homestead settlers.

Lewis J. Mend of Obenchain is down in the valley and will bring Judge Pentz back with him to attend to business.

T. C. Hall of Ironworkers is in Medford after store supplies.

The health of our community has been very good during the winter.

M. L. Erickson, the newly appointed forest supervisor for Center lake division, returned to the city on Wednesday after an extended examination trip.



LOVE WILL FIND A WAY

to place an engagement ring on the finger of his lady love, and if it be purchased here she is sure to appreciate it all the more. We have a magnificent assortment of rings set with diamonds, rubies, sapphires and emeralds in all the latest designs and settings, as well as everything that is beautiful in gifts at Christmas.

Martin J. Reddy,
 The Jeweler,
 Next Post Office

PROGRAM AT THE LOUVRE
 ON NEW YEAR'S EVE

- The following is the program for New Year's eve at the Louvre, commencing at 9:30 p. m.:
1. March "The King Radium"
 2. Gavotte "The Alaskan"
 3. Medley "The Hit of 1908"
 4. Waltzes "The Court of Love"
 5. Selection "The Time, Place and the Girl"
 6. Barn Dance "Cy and Sue"
 7. Overture "The Alaskan"
 8. Waltzes "The Silver Brook"
 9. Tone poem "Apple Blossoms"
 10. Selection "The Merry Widow"
 11. Spanish serenade "La Paloma"
 12. March "The Gunfire"

For Sale.
 At a bargain, upright parlor organ; in perfect condition; will make suitable Christmas present. For particulars address "H." Tribune office. 242

ALL GREEN FOODS WILL BE PROHIBITED IN FUTURE

WASHINGTON, Dec. 31.—After today, no foods greened with copper salts will be allowed entry to the United States, according to a decision of the government board charged with the duty of enforcing the pure food act. It has been decided by the board that the act prohibit the importation of foods treated with copper salts.



Hot Air Won't Raise The Wind

You can raise the wind better by buying Medford property at present prices and sit down at your own fireside until the advance comes next spring.

There's always "something doing" in Medford, and indications are that the coming year will see more building, more street and sidewalk improvement and a greater advance in values in Medford than ever before.

Fall in line and don't let the procession run over you.

ROGUE RIVER LAND COMPANY
 EXHIBIT BUILDING



SATISFACTION is always a pleasurable sensation, no matter what the occasion. Therefore, to insure the feeling where jewelry is concerned, you should make your selection from the stock of Martin J. Reddy. Our goods have the charm of effectiveness, the value of artistic excellence and the highest standard of workmanship.

MARTIN J. REDDY
 Jewelry and Watches



NEW YEAR'S DAY FORMALITIES require and etiquette demands that proper respect be paid to your dress when calling or attending any function on that day. Therefore perfect fitting clothes must be worn. To procure such garments you must employ a tailor thoroughly versed in the requirements of style and fashion. Have your wardrobe made by Kreuzer & Co. and you will be conscious of what it is to be perfectly dressed.

J. A. Kreuzer & Co.
 Importers and Tailors
 PALM BUILDING, MEDFORD, OR.

More Light for Less Money

Sixty-three per cent of electric current saved by using TUNGSTEN LAMPS.

32 Candle Power Edison Lamp uses 110 Watts per hour and would use in 1000 hrs. 110 Kilowatts which at 10 cts. a Kilowatt \$ 11

32 Candle Power Tungsten Lamp uses 40 Watts per hour and would use in 1000 hours 40 Kilowatts which at 10c a Kilowatt..... 4

Net Saving in 1000 hours in favor of the Tungsten Lamp..... \$ 7

Rogue River Electric Co.

Successors to Condor Water & Power Co.
 Office, 206 West Seventh Street. Phone No. 355.
 Opposite the Big Electric Sign.

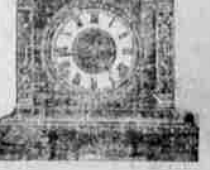
MEDFORD SASH & DOOR COMPANY

PHONE 2291.
 Window Frames, Oak Veneered Doors, with Bevel Plate, carried in stock cheap. Office Fixtures and all kinds of Planing Mill Work, including Turned Work and Fancy Grills.

F STREET, BETWEEN SIXTH AND SEVENTH STREETS.

Mrs. Irene Hampton Isaacs

Instructor of Piano. Liszt Method
 Studio at Residence, North Orange Street



Watches, Clocks, Jewelry REPAIRING A SPECIALTY.
 "Not how much I can do, but how well I can do it," is my motto.
B. N. BUTLER
 With Martin J. Reddy, Central ave., north of Jackson County Bank.