

805 Farm Buildings

Martin Cisneros Pole Buildings & Concrete. Shops, garages, arenas, hay storage. Agriculture/ Residential, additions and repairs. Serving Oregon CCB# 135771. Licensed, bonded and insured. Excellent references. 503-375-9273 or 503-507-2410

807 Fuel, Heating & Firewood

FIREWOOD: Well seasoned and split. Fir and Oak. Fir \$220/ cord. Oak \$320/ cord. Delivery Available. Salem, OR. 541-815-2620, 971-701-0081

Logs for firewood. Doug fir, completely dry, limbed and decked. approx. 9 cords available. \$500. Hillsboro, OR 971-285-6960

821 Christmas Trees

Nordmann, Noble, White Pine and Cedar Boughs, 200 tons available. U-Cut, \$350 ton. We cut \$1,000 ton. Nordmann Christmas Trees, 6ft, 7ft, \$40. 9-10ft, \$75. No. 2s, 1/2 price. Rochester, WA. 360-789-1911

Christmas Trees For Sale

Noble Christmas Trees 6ft. to 7ft. Colton, OR. Please call 503-314-0145

822 Nursery Stock -



Hazelnut Trees: McDonald, Jefferson, Yamhill, Wepster, York, Eta, Theta, Felix, Dayton, OR. 503-864-4422

Blueberry 20+ Varieties, Rasperry, Marion, Boyesen, Currant, Grape, Kiwi, Strawberry Plants. Canby, OR. 541-543-7566
www.canby.com/morning-shade

824 Seed

Quality VNS Alfalfa Seed: Touchet, WA. Chris Kregger 509-394-2400

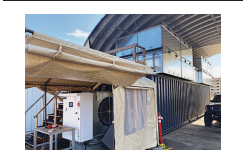
826 Organic

Certified Organic Alfalfa: 3x4 bales and 3-string bales. Call for pricing. OTHELLO, WA (509)989-2141

Approximately 375 tons of Organic Oat Hay. Very Clean. Cut green. Extra Nice Hay! 3x4 bales, \$275/ ton. KLAMATH FALLS, OR (541)892-2706

Organic Barley and Wheat Straw: 3x4 bales. Call for pricing. Milton Freewater, OR 509-301-1385

835 Hemp



Transportable Kiln dryer/ batch hemp dryer. Kiln Built by Ventco. Low hours. Used 1 season. Complete with 10 totes. Capable of being used with propane or natural gas, \$90,000 OBO Cornelius, OR. 503-939-4524

The Oregon Hemp Farmer is looking to buy hemp biomass. Office 503-873-6774; Cell 503-551-5809

840 Miscellaneous

Duck hunting lease in NW Oregon wanted. Willing to do most of the work, just need the right spot. If you have a wetland that's not being hunted, let's talk. Clackamas County, OR 503-621-9890

805 Farm Buildings

869 Livestock Equipment & Supplies



(1) Kirby 4 bale feeder, \$25,000. Good working Condition, ATWATER, CA 209-604-1342



New IA Portable Hay Feeder:
• 8 hole wheels
• Swing up tongue
• Inner bunk
• 35 stations
\$6,395
2 or more \$6,195 each.
MTC Sales
Bend, OR.
Scott: 541-815-2953
Visit:
www.mtcsales.net
•••••Partner Dealers•••••
Aleman Equipment
Dutchess, Alberta, CAN.
Jerry: 403-793-7341
Equipment Finders
Twin Falls, ID
Dave: 208-731-4040
Vista Equipment
Hazen, NV.
Jerry: 775-741-0688

821 Christmas Trees

Nordmann, Noble, White Pine and Cedar Boughs, 200 tons available. U-Cut, \$350 ton. We cut \$1,000 ton. Nordmann Christmas Trees, 6ft, 7ft, \$40. 9-10ft, \$75. No. 2s, 1/2 price. Rochester, WA. 360-789-1911

Christmas Trees For Sale

Noble Christmas Trees 6ft. to 7ft. Colton, OR. Please call 503-314-0145

822 Nursery Stock -



Hazelnut Trees: McDonald, Jefferson, Yamhill, Wepster, York, Eta, Theta, Felix, Dayton, OR. 503-864-4422

Blueberry 20+ Varieties, Rasperry, Marion, Boyesen, Currant, Grape, Kiwi, Strawberry Plants. Canby, OR. 541-543-7566
www.canby.com/morning-shade

824 Seed

Quality VNS Alfalfa Seed: Touchet, WA. Chris Kregger 509-394-2400

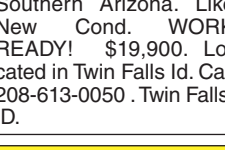
826 Organic

Certified Organic Alfalfa: 3x4 bales and 3-string bales. Call for pricing. OTHELLO, WA (509)989-2141

Approximately 375 tons of Organic Oat Hay. Very Clean. Cut green. Extra Nice Hay! 3x4 bales, \$275/ ton. KLAMATH FALLS, OR (541)892-2706

Organic Barley and Wheat Straw: 3x4 bales. Call for pricing. Milton Freewater, OR 509-301-1385

835 Hemp



Transportable Kiln dryer/ batch hemp dryer. Kiln Built by Ventco. Low hours. Used 1 season. Complete with 10 totes. Capable of being used with propane or natural gas, \$90,000 OBO Cornelius, OR. 503-939-4524

The Oregon Hemp Farmer is looking to buy hemp biomass. Office 503-873-6774; Cell 503-551-5809

840 Miscellaneous

Duck hunting lease in NW Oregon wanted. Willing to do most of the work, just need the right spot. If you have a wetland that's not being hunted, let's talk. Clackamas County, OR 503-621-9890

805 Farm Buildings

878 Generators



GENERATORS: Used, low hour takeouts, 20kW to 2000kW, diesel, propane, & natural gas. Cooperstown, ND. We ship nationwide. 701-371-9526 or 701-367-4305
abrahamindustrial.com

887 Irrigation Equip-



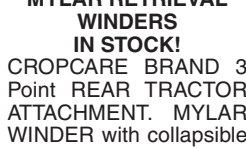
DRIP TAPE WINDER: 2022 Andros Mega binder with power unit, \$49,798. Aquatech Irrigation Supply, LLC. Pasco, WA 509-619-9256

887 Irrigation Equip-



MOBILE PUMP SKID 6 CYLINDER DUETZ DIESEL ENGINE. PACO CENTRIFUGAL PUMP. RATED AT 1,900GPM@55PSI. Pictures and pump curve available. New fuel lines, battery, alternator. Newly painted twin metal fuel tanks. All mounted on HD steel frame. Starts and runs good, \$11,500. AS IS. Pasco, WA. Call BEN-JAMIN BAUMAN 509-619-9256

887 Irrigation Equip-



MYLAR RETRIEVAL WINDERS IN STOCK! CROP CARE BRAND 3 Point REAR TRACTOR ATTACHMENT. MYLAR WINDER with collapsible winding head and stand on platform. TREMENDOUS LABOR SAVINGS AND RAPID CLEAN UP TIMES. CALL FOR DETAILS OR A DEMO. **AQUATECH IRRIGATION SUPPLY LLC,** BENJAMIN BAUMAN 509-619-9256

887 Irrigation Equip-



NEW IA Pivot Track Closer. Heavy Duty with adjustable cone discs. From 60" to 12" closing width. Hydraulic Depth Control water fill roller packer, \$5,495. **MTC Sales** Bend, OR. Scott: 541-815-2953 Visit: **www.mtcsales.net** •••••Partner Dealers••••• **Aleman Equipment** Dutchess, Alberta, CAN. Jerry: 403-793-7341 **Equipment Finders** Twin Falls, ID Dave: 208-731-4040 **Vista Equipment** Hazen, NV. Jerry: 775-741-0688

887 Irrigation Equip-



Takeuchi TB135 Track Hoe: hour meter 1893, very clean machine. One owner, \$34,900. Colton, OR. Please call 503-314-0145

887 Irrigation Equip-



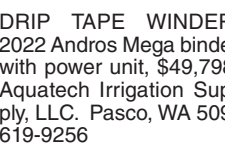
John Deere 135G Excavator, Hydraulic Thumb, Pin Grabber, 2 Buckets, Auxiliary Hydraulics, Blade, 7600 Hours, Asking \$95,500. Sandy, OR. Call Pepe: 503-544-3232; Call Pat: 503-407-9062

887 Irrigation Equip-



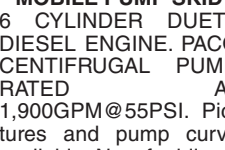
WANTED- Water rights for 40 acres. Walla Walla County, Washington. 509-531-5420

887 Irrigation Equip-



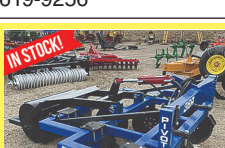
20HP Cornell Irrigation Pump: new rewind, new bearings, \$2000. Klamath Falls, OR (541) 591-0738

887 Irrigation Equip-



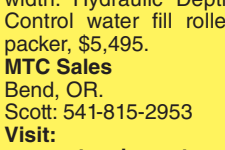
Water lift pump Preferred 500GPM 4 stage turbine 1800RPM. 1.25 input shaft. Suction pipe and screen included. New, never used, \$4000. Yreka, California 916-206-6454

887 Irrigation Equip-



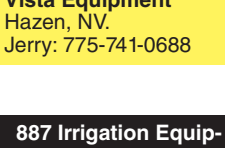
(40) Used Pivots: New listings coming. Engines, pumps. Garden Valley, ID. Call Mike at 208-420-1480, or see **www.pivotsplus.com**

887 Irrigation Equip-



PVC Pipe: 600 feet of 2.50" with 160 psi rating, \$1.75 per foot. Salem, OR. 503-991-6606

887 Irrigation Equip-



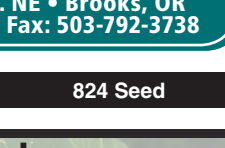
890 Packing/Processing Equipment Hazelnut in shell size grader. Perfect to increase your profit or to use for home market sales. Hazelnut sheller with kernel sizer also available. Salem, OR 503-999-5876

887 Irrigation Equip-



1994 CAT 320LC: 8,000 hours, thumb, plus wedge Quick Connect. Comes with 2 digger buckets and large cleanup bucket. Runs Good. \$45,000. Gaston, OR. 503-789-3726

887 Irrigation Equip-



2016 CAT: 305E2 CR Mini Excavator, New Hydraulic Thumb, Wedge Quick Connect, Blade, 5391 Hours, Asking \$47,500. Sandy, OR. Call Pepe: 503-544-3232; Call Pat: 503-407-9062

887 Irrigation Equip-



Case 590 Super L Backhoe, Enclosed Cab, 4x4, Asking \$32,500. Sandy, OR. Call Pepe: 503-544-3232; Call Pat: 503-407-9062

887 Irrigation Equip-



1997 Caterpillar D5M LGP Dozer, 6 Way Blade, CAT 3116 Engine, Multi-shank Ripper, Asking \$57,500. Sandy, OR. Call Pepe: 503-544-3232; Call Pat: 503-407-9062

887 Irrigation Equip-



905 Antique Farm Equipment & Parts

887 Irrigation Equip-



1948 John Deere "M" Tractor. Great Condition. \$4,200. STAYTON, OR 503-769-5238

887 Irrigation Equip-

1950 John Deere (G) Tractor: Runs good, New Paint, Tires 90% (but weathered), \$2,750.00 NAMP, ID (208)870-5787

887 Irrigation Equip-

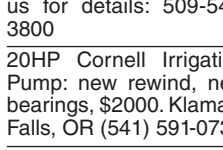
1946 BO John Deere Lindeman for sale. Runs, has Lindeman blade, no cracks in casing or repair welds, \$5,500. 425-879-3681. Snohomish, WA

887 Irrigation Equip-



Rain-Flow Equipment In Stock! Mulch Layers, Transplanters, and Mulch Lifters. **AquaTech Irrigation Supply,** Pasco, WA. Call us for details: 509-547-3800

887 Irrigation Equip-



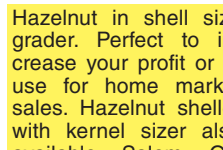
2013 CimLine CRACK PATCHER. Tandem axle, 230 gallon, 18ft. heated hose and wand. Isuzu 3 cylinder diesel. Near new tires. 1300 ACTUAL Hours. Former Southern California County machine that has been well maintained and is work ready, \$16,900. Located in Twin Falls ID. Call 208-613-0050

887 Irrigation Equip-



MultiQuip Fire Water Trailer: NEW and available today, \$11,750. APPROVED FOR CONSTRUCTION AND JOB SITE FIRE PROTECTION. Medford, OR. If you have questions or interest please call or text 541-944-6341.

887 Irrigation Equip-



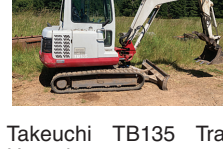
CX130 Case Excavator: 2 buckets, thumb, pin grabber, plumbed for hammer, 8000 hours. Excellent condition, \$49,950. MADRAS, OR (541)610-2506

887 Irrigation Equip-



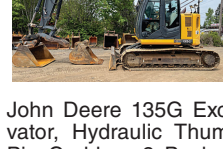
CHECK line ads online at CapitalPress.com

887 Irrigation Equip-



902 Farm Equip. Parts

887 Irrigation Equip-



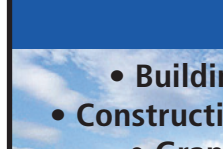
902 Farm Equip. Parts

887 Irrigation Equip-



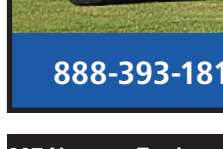
902 Farm Equip. Parts

887 Irrigation Equip-



902 Farm Equip. Parts

887 Irrigation Equip-



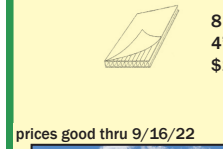
902 Farm Equip. Parts

887 Irrigation Equip-



902 Farm Equip. Parts

887 Irrigation Equip-



902 Farm Equip. Parts

887 Irrigation Equip-



899 Heavy & Industrial Equipment



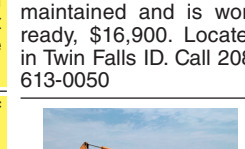
2006 Komatsu PC138 Excavator, Hydraulic Thumb, Wedge Quick Connect, Muck Bucket, Asking \$49,500. Sandy, OR. Call Pepe: 503-544-3232; Call Pat: 503-407-9062

899 Heavy & Industrial Equipment



1964 D8H CAT 46A: Power shift, pony motor, electric start, angle blade, winch. Good Runner, \$26,000. GASTON, OR. 503-789-3726

899 Heavy & Industrial Equipment



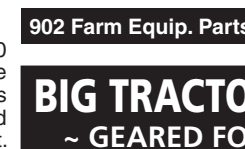
D8 CAT Model 14A with Model 70 scraper and ripper. Work Ready, \$25,000. Redding, CA 530-365-3153

899 Heavy & Industrial Equipment



2013 CimLine CRACK PATCHER. Tandem axle, 230 gallon, 18ft. heated hose and wand. Isuzu 3 cylinder diesel. Near new tires. 1300 ACTUAL Hours. Former Southern California County machine that has been well maintained and is work ready, \$16,900. Located in Twin Falls ID. Call 208-613-0050

899 Heavy & Industrial Equipment



MultiQuip Fire Water Trailer: NEW and available today, \$11,750. APPROVED FOR CONSTRUCTION AND JOB SITE FIRE PROTECTION. Medford, OR. If you have questions or interest please call or text 541-944-6341.

899 Heavy & Industrial Equipment



CX130 Case Excavator: 2 buckets, thumb, pin grabber, plumbed for hammer, 8000 hours. Excellent condition, \$49,950. MADRAS, OR (541)610-2506

899 Heavy & Industrial Equipment



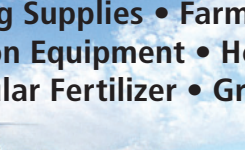
CHECK line ads online at CapitalPress.com

899 Heavy & Industrial Equipment



902 Farm Equip. Parts

899 Heavy & Industrial Equipment



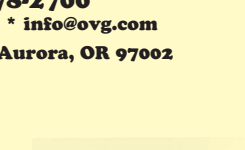
902 Farm Equip. Parts

899 Heavy & Industrial Equipment



902 Farm Equip. Parts

899 Heavy & Industrial Equipment



902 Farm Equip. Parts

899 Heavy & Industrial Equipment



902 Farm Equip. Parts

899 Heavy & Industrial Equipment