

923 Farm Equipment



New IA Subsoilers
26" Clearance
•3 Shank \$2,995
•5 Shank \$3,795
•7 Shank \$4,895
Gauge Wheel Set, Add \$995.
•**HD Subsoilers** with Dual Gauge Wheels. Weight 4,500 to 5,500 lbs. 30" Clearance.
•7 Shank \$11,995
•9 Shank \$12,995
•11 Shank \$13,995
MTC Sales
Bend, OR.
Scott: 541-815-2953
Visit:
www.mtcsales.net
••••Partner Dealers••••
Aleman Equipment
Dutchess, Alberta, CAN.
Jerry: 403-793-7341
Equipment Finders
Twin Falls, ID
Dave: 208-731-4040
Vista Equipment
Hazen, NV.
Jerry: 775-741-0688

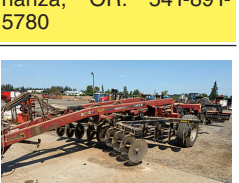
923 Farm Equipment



NEW IA HD graders
•10ft: \$10,595
•12ft: \$10,995
•14ft: \$11,995
•16ft: \$12,995
Angle-tilt-offset. Flip up ends.
MTC Sales
Bend, OR.
Scott: 541-815-2953
Visit:
www.mtcsales.net
••••Partner Dealers••••
Aleman Equipment
Dutchess, Alberta, CAN.
Jerry: 403-793-7341
Equipment Finders
Twin Falls, ID
Dave: 208-731-4040
Vista Equipment
Hazen, NV.
Jerry: 775-741-0688

923 Farm Equipment

WANTED: Complete Straw Spreader attachment for a John Deere 9600 Combine. Bonanza, OR. 541-891-5780



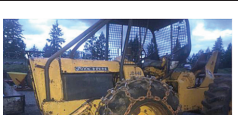
EZ-1200XLS Topsoil Screener - NEVER USED. Includes the optional middle product conveyor boost, \$74,000. Oak Harbor, WA 360-914-1220

923 Farm Equipment



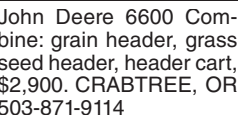
Case IH 530C disk ripper, rebuilt. Ready to go. \$23,000 Silverton, OR. 503-510-2396

923 Farm Equipment



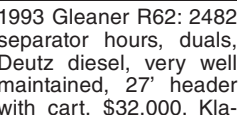
John Deere 6600 Combine: grain header, grass seed header, header cart, \$2,900. CRABTREE, OR 503-871-9114
John Deere 918 grain header with trailer for sale, \$8750. Cornelius, OR. 503 793 8231
2014 MacDon R85 Header \$14,000 OBO Othello, WA. (509)488-6321

923 Farm Equipment



1993 Gleaner R62: 2482 separator hours, duals, Deutz diesel, very well maintained, 27" header with cart, \$32,000. Klamath Falls, OR. Call Larry 541-891-9939

923 Farm Equipment



2 Used John Deere 8820 Combines. Great Condition. Best offer. Call Carl for more information 503-873-4791 or 503-510-5183. Silverton, OR

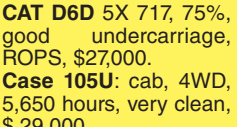
923 Farm Equipment



2020 Oxbo Bean Picker BH100: approximately 100 hours, like new, \$30,000 Springfield, OR (541)525-5938



CAT D6D 5X 717, 75%, good undercarriage, ROPS, \$27,000.
Case 105U: cab, 4WD, 5,650 hours, very clean, \$29,000.
Case IH 7240: 4WD, cab, 2,600 hours, 195HP, \$65,000.
John Deere 6115D: ROPS, 4WD, 115HP, 3,700 hours, \$37,000.
John Deere 6430: cab, 2WD, 4,000 hours, 115HP. Very clean, \$45,000.
John Deere 893: Corn head, Little use, \$11,000.
Wilcox Eliminator: 17.5/ Liquid fertilizer tank, 1,000 gallon, fold up, hydraulics, \$65,000.
Rears, Air-O-Fan, John Bean, Turbo Mist orchard Sprayers (Call)
Case IH 2388: Grain Combine: 2005 year, 5,200 engine hours, 3,800 separator hours. Lots of updates (new) **Screens, feeder chain, concaves, extra parts. Heads 8 row 1083 & 810 grain heads.** (Call. Priced to sell)
1/4 mile 4" wheel line, 60" wheels, motors. Really Clean. Like new (Call)
Gregoire Vine Harvester: Model 60, PTO, pull, 2015 year. Bow rod, tires like new, extra belts. Very clean, \$27,000 OBO
Military Mac trucks 60-70's. 4WD. Mac motors. BO. Run good!!
Ford Diesel motor Generator 300KW, trailer unit. Call (runs good!) ACAMPO, CA . David Taylor. Call for Details! 916-806-7431 dave-taylor@sbcglobal.net



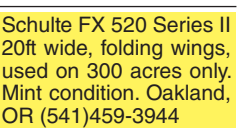
NEW IA Super Duty Off-set Wheel Discs. EZ Adjust Gang Angle. 30" notched blades front and rear, adjustable scraper kit, 2" gang shafts, split gang shafts, high clearance. 9,000 to 12,000 lbs.
•12ft \$31,900
•14ft \$33,900
•16ft \$35,900
•21ft \$40,900
•10ft to 25ft
MTC Sales
Bend, OR.
Scott: 541-815-2953
Visit:
www.mtcsales.net
••••Partner Dealers••••
Aleman Equipment
Dutchess, Alberta, CAN.
Jerry: 403-793-7341
Equipment Finders
Twin Falls, ID
Dave: 208-731-4040
Vista Equipment
Hazen, NV.
Jerry: 775-741-0688



Case IH 12ft 780 disc, \$14,000. Case IH 18ft tandem disc, \$3500. Case IH 24ft field cultivator with harrow, \$3000. Heavy drag harrow, 17ft, \$2000. CORNELIUS, OR 503-314-8018



McHale C460-Trailed Silage Feeder and Straw Blower Purchased new 2016. Based on tractor hours approx. 700 hours used. Well maintained. \$17,500. Oak Harbor, WA 360-914-1220



Schulte FX 520 Series II 20ft wide, folding wings, used on 300 acres only. Mint condition. Oakland, OR (541)459-3944



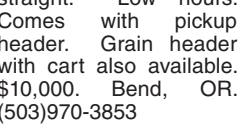
Massey Ferguson 3 point tractor scoop, good shape, older well built model, \$275. Newport, OR 541-961-2680



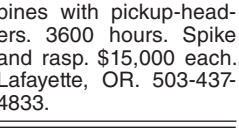
Very Heavy Built Ashland Land Plane by Wisconsin. 14' wide, Model L-12, Serial Number 13185. Very Good Condition, \$13,000. Buhl, ID 208-308-1950



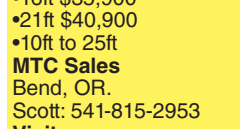
John Deere 9600 combines with pickup-headers. 3600 hours. Spike and rasp. \$15,000 each. Lafayette, OR. 503-437-4833.



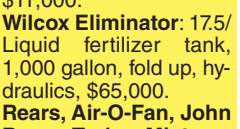
1480 Case IH Combine. Excellent condition. Very straight. Low hours. Comes with pickup header. Grain header with cart also available. \$10,000. Bend, OR. (503)970-3853



New MultiQuip Water Trailer with pump for \$9,900. It can be pulled with your light duty truck. Medford, OR. If you have interest or want to see a demo video, please call or text 541-944-6341



NEW IA Rotary Mowers
•6ft. 3 Point \$2,595
•7ft. 3 Point \$2,995
•10ft. 3 Point \$4,995
•12ft. 3 Point \$5,495
MTC Sales
Bend, OR.
Scott: 541-815-2953
Visit:
www.mtcsales.net
••••Partner Dealers••••
Aleman Equipment
Dutchess, Alberta, CAN.
Jerry: 403-793-7341
Equipment Finders
Twin Falls, ID
Dave: 208-731-4040
Vista Equipment
Hazen, NV.
Jerry: 775-741-0688



NEW IA 16ft SHD wheel scrapers. Move massive amounts of soil. Hydraulic tilt, \$26,900.
MTC Sales
Bend, OR.
Scott: 541-815-2953
Visit:
www.mtcsales.net
••••Partner Dealers••••
Aleman Equipment
Dutchess, Alberta, CAN.
Jerry: 403-793-7341
Equipment Finders
Twin Falls, ID
Dave: 208-731-4040
Vista Equipment
Hazen, NV.
Jerry: 775-741-0688

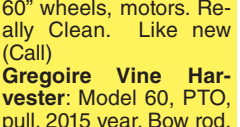
Container Sales and Transport
We offer 10' 20' 40' 45' 53' Containers and Refers
40HC One Trips \$5,990
While they last.
WE DO MODS



Locations: Portland . Seattle . Albany
Call Alan Conner (503) 277-3323
CanSales@PartenTrucking.com
wesellcans@partentrucking.com



NEW IA 16ft SHD wheel scrapers. Move massive amounts of soil. Hydraulic tilt, \$26,900.
MTC Sales
Bend, OR.
Scott: 541-815-2953
Visit:
www.mtcsales.net
••••Partner Dealers••~••
Aleman Equipment
Dutchess, Alberta, CAN.
Jerry: 403-793-7341
Equipment Finders
Twin Falls, ID
Dave: 208-731-4040
Vista Equipment
Hazen, NV.
Jerry: 775-741-0688



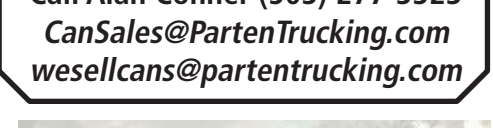
NEW IA 16ft SHD wheel scrapers. Move massive amounts of soil. Hydraulic tilt, \$26,900.
MTC Sales
Bend, OR.
Scott: 541-815-2953
Visit:
www.mtcsales.net
••~••Partner Dealers••~••
Aleman Equipment
Dutchess, Alberta, CAN.
Jerry: 403-793-7341
Equipment Finders
Twin Falls, ID
Dave: 208-731-4040
Vista Equipment
Hazen, NV.
Jerry: 775-741-0688



NEW IA 16ft SHD wheel scrapers. Move massive amounts of soil. Hydraulic tilt, \$26,900.
MTC Sales
Bend, OR.
Scott: 541-815-2953
Visit:
www.mtcsales.net
••~••Partner Dealers••~••
Aleman Equipment
Dutchess, Alberta, CAN.
Jerry: 403-793-7341
Equipment Finders
Twin Falls, ID
Dave: 208-731-4040
Vista Equipment
Hazen, NV.
Jerry: 775-741-0688



NEW IA 16ft SHD wheel scrapers. Move massive amounts of soil. Hydraulic tilt, \$26,900.
MTC Sales
Bend, OR.
Scott: 541-815-2953
Visit:
www.mtcsales.net
••~••Partner Dealers••~••
Aleman Equipment
Dutchess, Alberta, CAN.
Jerry: 403-793-7341
Equipment Finders
Twin Falls, ID
Dave: 208-731-4040
Vista Equipment
Hazen, NV.
Jerry: 775-741-0688



KIOTI
run ahead of the pack
FISCHER MILL SUPPLY, INC.
EST. 1889 503-631-3411 OREGON CITY, OR
NEW KIOTI TRACTORS
DK4510, 45hp, 4x4, ROPS, 8x8 Shuttle, Loader w/ 72" Q/A Bkt. CALL
NS6010H, 58 hp, 4x4 ROPS, 3-R HST, Loader w/ 72" Q/A BKT. CALL
RX7320PB 73 hp, 4x4, ROPS, 12x12, Loader 82" Q/A BKT. CALL
VISIT FISCHERMILLSUPPLY.COM TO SEE ALL INVENTORY
USED TRACTORS
IH274, 2WD, high clearance w/ Maschio tiller...\$9,750
NH TS100 2wd Cab Tractor w/ LDR...\$28,500
Challenger MT265B 4x4 w/ Loader...CALL
USED HAY EQUIPMENT
Massey 1734 Round Baler, 3x4...\$13,500
Case Side Delivery Rake...\$2,950
Hesston 1071 Haybine, 7' cut, clean...\$5,000
Kverneland KD807 Bale Processor...\$7,000
MISCELLANEOUS
New Holland B95 Backhoe...\$35,000
Link-Belt 80 Excavator, 2 bkts, Thumb...CALL
Edwards 3pt Hydraulic Forklift...\$2,800
Montana Air Blast Sprayer 110gal...\$4,950
Rears Pak-Floil 8' FL960s...\$7,500
Agri-Ease WC522 PTO Chipper, Hyd. Feed...\$4,700
Graham Chisel Plow 9-shank, Pull Type...\$3,750
IH Finish Disk, 10', Tandem...\$4,150
John Deere 5-Shank Ripper...\$3,750
John Deere 4600A 5-btm. R/O plow...\$4,700
Porters Welding 3pt Orchard Float, 8', DEMO...\$5,250
Glencoe 3pt Cultivator 8 Shank...\$1,350
Porters Welding 3pt Orchard Float, 8', DEMO...\$5,250
New Rankin 327 V-Ripper, 3 shank...\$3,475
New H&S Mfg. 20' Feeder on Rubber...\$6,950
Buckeye Plastic Mulch Layer Model 4333...\$2,950
Bandit 90XP Wood Chipper, PTO...\$21,000

Hello AUGUST

NW Mixer Feeders
Feeding Cows Without The BULL!

Supreme 700T Laird VR1600DD

Meyers F585 Vermeer VT970 Roto-Mix 635

www.nwmixerfeeders.com 1121 GARBER ST. CALDWELL, ID 83605 (208) 459-2750

www.GKPaintandPowder.com

GK Paint and Powder provides high-quality sandblasting, liquid paint, and powder coating for agricultural, industrial, and manufacturing customers



Call for a friendly quote! 503-678-5525
GK MACHINE, INC · www.GKPaintandPowder.com

EQUIPMENT
NEW HOLLAND AGRICULTURE
www.sseqinc.com

- PASCO, WA** (509) 547-1795
- QUINCY, WA** (509) 787-3595
- OTHELLO, WA** (509) 488-9606
- HERMISTON, OR** (541) 567-3001
- LA GRANDE, OR** (541) 963-8144
- ALBANY, OR** (541) 757-8112

BALERS - LARGE SQUARE		MIXERS/TUB GRINDERS	
NH 340PLUS, 2021, Loopmaster knotters, large steer tandem, 13,500 bales ...	\$112,900	We are a full line dealer for SUPREME-SEGUE-ROTOMIX	
NH 340PLUS, 2020, Loopmaster knotters, tandem, scales, moisture, electronic bale length, intelligview IV monitor, LED service lights, 8390 bales.....	\$94,900	Rotomix 1105 truck mount, 2003, new stainless liners, new augers, new knives, new LH discharge chute. On 1990 Peterbilt 357 double frame, Cat 3176, 400 HP, 13 speed.....	
(5) NH 340PLUS 3x4's, 2019's, tandem axles, bale scales, moisture sensors, Intelliview III monitors, 21,950 to 26,083.....	\$81,900 to \$85,900	Supreme 900T, 2016, call for more details please.....	
NH 340PLUS, 2019, 11,267 bales, single axle, scales.....	\$99,900	FORAGE HARVESTERS	
NH 340PLUS, 2019, 16,000 bales, large tandem, scales, moisture.....	\$99,900	NH FP230, 2002, 29P header, tandem on left, single on right.....	
NH 340PLUS, 2019, 22,000 bales, large tandem, scales, moisture.....	\$89,900	NH FP240, 2019, pick-up header, tandem, spout extension, 4 blade fan kit, new blower liner.....	
NH 340PLUS, 2019, 18,050 bales, tandem, scales, moisture.....	\$87,900	ORCHARD/VINEYARD	
NH 340PLUS, 2019, 30,161 bales, large tandem, scales, moisture.....	\$79,900	(2) NH T4.90V, ROPS, 4WD, 2,600 hours ea., good rubber.....	
NH 340PLUS, 2018, 10,000 bales, large tandem, scales, moisture.....	\$109,900	(4) NH T4.90V, ROPS, 4WD, 3,226-4,505 hours.....	
NH 340PLUS, 2017, 13,742 bales, tandem axle, scales, moisture.....	\$89,900	NH T4.80V, 2021, ROPS, only 133 hours, 16x16 power shuttle, warranty....	
(10) NH 340s 3 x 4 Balers!!! 8,600 bales to 39, 986 bales. \$39,900 to \$89,900. Lots of price points to choose from!!		NH T3.70F, 2019, 1,725 hours, 20x20 trans, 2 remotes.....	
MANY UNITS GONE THROUGH OUR SHOP AND READY TO GO!!!		Hydralada Pruner Kits, several in stock..... Please call for prices and details	
NH BB9080, 2012, 18,723 bales, single axle.....	\$49,900	Hydralada 49565 chainsaws, several in stock.....	
NH BB9080, 2011, single axle, 22,654 bales, large 1000, IV III.....	\$44,900	Seppi 6' flail mower, hammers, offset, 540.....	
NH BB9080, 2009, 42,000 bales, single axle.....	\$39,700	COMBINES	
Case IH LB434, 2014, 25,000 bales, large tandem.....	\$63,700	NH CX8070, 2012, 2,611 engine hours, 2,168 separator hours, 2WD, pick-up header.....	
Claas 5300, 2016, tandem, rotocut, 35,167 bales, moisture.....	\$95,900	NH 974 6-row corn header.....	
Claas 5300, 2019, roto-cut, 19,604 bales.....	\$95,000	Case IH 1680, 1990, 5468 hours, 25' auger header.....	
Claas 5300, 2019, 35,000 bales, rotocut, tandem axles, hvd. Brakes.....	\$93,000	Shelbourne Reynolds RSD16, 2015 model, used very little!!!	
BALERS - ROUND		TILLAGE/SPRAYERS/MISC.	
NH BR780A, 2007, 5x6, twine and netwrap, wide pick-up.....	\$16,900	Unverferth 220, 26' rolling basket, 12.5" baskets, straight.....	
BALERS - SMALL SQUARE		Maschio SC380 tiller, 2003, 12' w/ roller basket.....	
NH BC5080, 2018, very low use, nice unit.....	\$28,900	GID BK60 bale slicer with mount kit.....	
(3) NH BC5080's, 2016's, nice balers.....	\$27,900	Case IH RMX340 tandem disk, 25', 21" notched blades, nice shape.....	
NH BC5080, 2012, commercial duty, 3-tie conversion.....	\$15,000	Krause 5817W 16' offset disk, scrapers.....	
NH 580, 1994, 16x18 commercial duty.....	\$9,900	CONSTRUCTION	
NH 580, 1998, 16x18 commercial duty, lots of new parts.....	\$9,900	Case 580S backhoe.....	
(2) NH 515 3-ties, 16x23, PTO driven, ready to go!!.....	\$6,000 ea.	TRACTORS	
Freeman 370, Deutz diesel, Gandy box, clean baler!!.....	\$18,900	NH T1375, 2002, 5,589 hours, silage dozer blade, good rubber.....	
Freeman 370 engine baler.....	\$15,000	NH T8.360, 2011, duals front & rear, 6 remotes, 9,673 hours.....	
Freeman 370 engine baler.....	\$11,000	NH T8.275, 2013, 1,721 hours, front & rear duals.....	
(2) Freeman SP's, older balers, will need some work.....	\$5,000 ea.	Ford 4630, 4WD, loader, 1,460 hours.....	
BALEWAGONS/STACKERS		International 400, gas, wide front end, great bend loader, TA.....	
Pro-Ag 16K, 2008, clean unit.....	\$55,900	John Deere 5065E, 2019, only 97 hours, loader ready, like new.....	
SWATHERS		John Deere 4100, 2001, only 648 hours, no loader, 48" rototiller.....	
NH HW365, 2007, 2,153 hours, 416 header, good rubber rolls.....	\$59,900	JD 4430, 1975, quad range, meter says 743, 2wd, 540/1000 pto's.....	
NH HW320, 2000, 2300 series 14' header, 3,200 hours.....	\$27,500	JD 4120, just in.....	
NH H8040, 2008, H514 header, 3,464 hours.....	\$39,900	JD 750, 1982, diesel, 4WD, 20hp, 8x2 trans, 72" finish mower.....	
NH H7230, 2014, 10' P/T rotary, rubber rolls, 2-point hitch.....	\$17,500		
NH 2550, 1996, 2214 header, 3,641 hours.....	\$18,900		
NH Speedworker 260, 2015, 416 header, 2,300 hours.....	\$89,900		
Hesston 9435, more details coming.....	\$39,700		
Hesston 9260, 2006, 15' rotary.....	\$45,900		
Hesston 1345, 2005, 13' P/T M/C, steel rolls.....	\$8,900		
(2) NH H516 hay headers, good rolls, good floors.....	\$18,000 ea.		
NH 770HD, 18' rotary.....	\$5,000		
RAKES			
OXBO 334 merger, 2013, 34' triple, hydr. skid shoes.....	\$69,900		
(4) NH 216's,\$6,900 to \$16,900			
Allen 8827, cable controls.....	\$12,700		
Allen 8827, 2000.....	\$12,500		
(2) Twinstar 2030G2-5's, 2015, good shape.....	\$25,900 ea.		
Twinstar 2027.....	\$9,900		

THE SINCH HAY FEEDING SOLUTION
Bringing Efficiency to Ranch Hay Feeding for Smart Ranchers

"IT'S A SINCH" - 100% US Made

"Very simple, dependable & durable machine, deserving great consideration by anyone that feeds big bales."
Todd Barr, Manassa, Colorado

"We have used a lot of different equipment to feed through the years & this is the best! Thanks Sinch."
Chuck Turner, Gooding, Idaho

- Very Efficient & Flexible
- Can be switched between pickup & tractor at the drop of a hat
- 6 & 8 bales fixed & detachable units ready to go
- Hydraulic Power Pack-gas powered wireless remote easily sits on gooseneck
- Videos on Website

SINCHBaleFeeders™
feeding farm efficiency
Sales: Christina Goss
541-219-1633
sinchbalefeeders@gmail.com

QUALITY BALES. DEPENDABLE DEALS.

0% Financing
Cash Back Available*

on select haytools
Hurry, offers end soon!

CNH INDUSTRIAL CAPITAL

*