

# Classifieds

800-882-6789

View all classified ads for free at CapitalPress.com

## Classified Index

Acreage.....	579	Loans & Financing.....	667
Alpacas & Llamas.....	743	Logging Equip.....	893
Antique Farm Eq. & Parts.....	905	Mini Ranchettes.....	555
Antique/Classic Vehicles.....	201	Misc for Sale.....	828
Antiques & Collectibles.....	813	Mixed Livestock Sales.....	752
Arts & Crafts.....	816	Mobile & Mfd. Home.....	537
ATVs/Motorcycles.....	219	Nursery Equipment & Supplies.....	907
Auction Sales.....	354	Nursery Stock Plants.....	822
Automobiles.....	204	Obituaries.....	91
Bees.....	823	Orchard & Vineyard Property.....	570
Bison.....	761	Orchard/Vineyard Equip.....	917
Boat Trailers.....	260	Packing/Processing Eq.....	890
Boat/RV Storage.....	269	Pasture.....	257
Boating Parts/Accessories.....	254	Pickups.....	211
Boats for Sale.....	251	Potato/Sugar Beet Equip.....	914
Boats Wanted.....	257	Poultry & Fowl.....	722
Building Materials.....	804	Public Notices.....	107
Business-Sales Opportunities.....	643	Rabbits.....	725
Business for Sale.....	644	Ranches.....	561
Campers & Canopies.....	310	Ranchettes.....	558
Cattle - Beef.....	758	Real Estate Auctions.....	534
Cattle - Dairy.....	755	Real Estate Wanted.....	531
Christmas Trees.....	821	Recreational Property.....	540
Coast Property.....	543	Refrigeration Equipment.....	863
Commercial Property.....	525	Rentals, Leases.....	546
Condos for Sale.....	510	Residential Property.....	549
Crop Protection Products.....	827	Rock, Sand & Gravel.....	803
Dairy Eq. & Supplies.....	872	RV Parts & Accessories.....	307
Dairy Farms.....	567	RVs & Travel Trailers.....	301
Dogs, Cats, Pets.....	728	Sawmill Equip.....	894
Draft Horses & Equip.....	734	Seed.....	824
Emu, Ostrich, Rhea.....	744	Services.....	664
Equestrian Property.....	552	Sheep.....	740
Exotic Animals.....	737	Shop Equip. & Tools.....	881
Farm Buildings.....	805	Sporting Goods/Hunting.....	819
Farm Equip Parts.....	902	SUVs.....	207
Farm Equipment.....	923	Tanks & Storage.....	875
Farm, Yard, Estate Sales.....	351	Timber Property.....	873
Farms.....	564	Timber/Lumber.....	801
Feed, Grain.....	719	Tires & Wheels.....	228
Fencing.....	802	Tractors.....	920
Fertilizer & Soil Amendments.....	825	Trailers Misc.....	316
Fish.....	721	Trailers, Horse & Stock.....	319
Forklifts.....	896	Truck/Auto Parts & Accessories.....	222
Fuel, Heating & Firewood.....	807	Trucks.....	210
Garden, Turf, Yard Equip.....	908	Utility Trailers.....	313
Generators.....	878	Vacation Homes for Sale.....	513
Goats.....	746	Vans.....	216
Hay Equip.....	911	Well-Drilling Equip.....	884
Hay, Straw, Forage.....	716	Work Wanted.....	652
Heavy & Indust. Eq.....	899		
Help Wanted.....	651		
Hemp.....	835		
Horses, Mules, Donkeys.....	731		
Irrigation Equip.....	887		
Lab Testing Services.....	665		
Land.....	576		
Legal Notices.....	101		
Livestock Equip. & Supplies.....	869		



Our readers get the best dirt.



CapitalPress.com  
800-882-6789

Your ad here! Call 800-882-6789

## Newsday Crossword

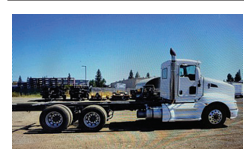
- ACROSS**
- Overflow
  - Jazz genre
  - Break of day?
  - Woody's singing son
  - It's south of BC
  - Toughen up
  - Acknowledge applause
  - Three beats of "The Blue Danube"
  - Plywood sources
  - Angler, at times
  - One with a May day
  - IV installers
  - Left Coast state, informally
  - Apple video editor
  - Former Chicago mayor Emanuel
  - Amazing Race network
  - Rental agency client
  - 19th-century prez
  - Aqueous defense
  - Barbecue spoiler
  - Off-kilter
  - Tell \_\_\_ (prevaricate)
  - Rocket trajectories
  - Ctr. for sea pilots
  - Minor matter
  - AL team in the Freeway Series
  - Sandberg in Cooperstown
  - Plant new grass
  - \_\_\_ butter (moisturizer)
  - Oater heroine
  - Green grass
  - \_\_\_ his own"
- DOWN**
- Anatomical art
  - Important span
  - Rockies grazer
  - Animated bartender
  - Naftul Bennett's predecessor
  - Ambient appraisals
  - Koala quartet
  - Start of many a workday
  - Himalayan enigma
  - Taking the place
  - Paper-saving passes
  - Some Pulitzer winners
  - Before now
  - Burkina \_\_\_
  - Family nickname
  - '80s First Son
  - Be a bellyacher
  - "Greatest Show" surname
  - Canonized English historian
  - \_\_\_ oull"
  - Superhero suffix
  - Thing of the past
  - Break time
  - It's east of Jamaica
  - Starting point
  - Word from the wise
  - Donator of Lennon's childhood home
  - What concludes a date
  - It makes bucks from buckets
  - Mr. Potato Head piece
  - Screening grp.
  - Sniffly sound

1	2	3	4	5	6	7	8	9	10					
11				12			13		14	15				
16				17			18							
				19			20							
21	22	23	24				25							
26				27			28	29		30	31	32		
33						34			35					
36						37	38		39					
40						41			42	43				
44						45			46					
				47	48				49			50		
51	52								53					
54									55		56	57	58	59
60									61		62			
									63		64			65

CREATORS SYNDICATE © 2022 STANLEY NEWMAN STANXWORDS@AOL.COM

Answers in classification 749

**210 Trucks**  
**2013 Kenworth Cummins ISX 300" WB Drop Axle And PTO 13 Speed Eaton 670,000 miles**  
In frame with paperwork done at 580,000 Miles  
**Call Myke 541-205-2470**



2010 Kenworth T660 cab and chassis. 20ft of frame behind the cab. Cummins ISX 400 Diesel. 10 speed. 52K GVW. A/C, CC, Power locks, engine brake, air suspension. 224" wheelbase. DPF Certified clean idle. Alloy wheels with near new 11/22.5 radials. 224" WB. Spotlessly clean and well maintained lease return with 380K miles that runs and drives like new has ZERO RUST and is work ready. \$39,900. Located in Twin Falls Id Call 208-613-0050



2002 IHC 4900 Crew Cab Wildland Fire Engine. 4X2. DT466 Diesel. Allison MD3560, 6 speed. Automatic. Sundstrand Hydrostatic with Waterous CPK-3-500GPM pump. (2) 1" hose reels. 33K. GVW with 75% 11/22.5 tires. 140K. ACTUAL MILES. One owner truck from the California Dept. of Forestry. Very clean and well maintained and is work ready. \$16,900. Located in Twin Falls ID. Call 208-613-0050

**THIS AD SPACE could be yours!**  
1-800-882-6789 or FAX 503-370-4383  
CapitalPress.com

**210 Trucks**  
1997 Ford 2000 gallon water truck. 8.3 Cummins motor, Allison transmission, AC, 2 fronts, 2 rears, 1 side spray. Like new condition, \$26,500 OBO. Atwater, CA. 209-604-1342



1992 IHC 4900 Crew Cab Wildland Fire Engine with DT466 Diesel and Allison MTB653, 5 speed. Automatic. Sundstrand hydro pump with Darley JMP500 GPM pump. New REBUILT ENGINE BY JASPER. 2,324 MILES on it. (2) 1" hose reels and 75% 11/22.5 radials. Operates as new. One owner truck from the California Dept. of Forestry and has been well maintained, clean and work ready. \$15,900. Located in Twin Falls ID. Call 208-613-0050



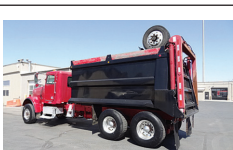
2000 Kenworth 4 Axle Dump Truck, 25 Yard Capacity, Tarps, 3406E, 18 Speed, Runs Great, \$59,000 Wilsonville, OR. 503-260-0303



1980 Mack 6x6 tandem axle dump truck. 6 Cylinder Mack Diesel. 9 speed with Lo, Drive and Overdrive Auxiliary, 4x4 transfer. Near new 22.5 Radial tires. LOW MILES. Came from a large Municipal Airport and has been well maintained, is very clean. Runs, drives and operates well. Comes with a snowplow. Drive it anywhere. \$24,900. Located in Twin Falls ID. Call 208-613-0050

PLACE LINE CLASSIFIED ADS TOLL-FREE FROM ANYWHERE!  
1-800-882-6789

**210 Trucks**  
1976 Mack 132,378 miles, high side dump, good tires, new clutch, \$7,000. Bainbridge Island, WA. 253-691-9891



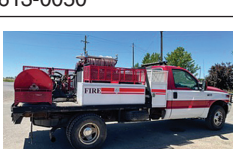
2001 Freightliner Classic with 20 yard dump bed with strong arm. Cummins Diesel with 325HP. 10 Speed. PS, AC, CC. Bed is Aluminum and you can't tell it from new. The entire truck is spotless. All tires are Super Single 425/65/22.5 on Alcoa wheels. They are 90%. 66,000 GVW. plus strong arm. Truck is in near new condition and is all original on the paint. NO RUST! 170,000 MILES. Runs, drives and operates like a new truck. Work ready, \$39,900. Located in Twin Falls ID. Call 208-613-0050



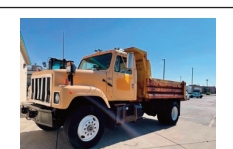
2000 IHC with Altec 53' articulating double bucket man lift with material handler. DT466 diesel. Allison Automatic. PS, AC, CC. New 22.5 radials. Certified. One owner truck from a State Agency that is in near new condition. It runs, drives, and operates like new. WORK READY, \$19,900. Located in Twin Falls ID. Call 208-613-0050



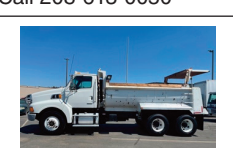
1988 Ford C8000 firetruck. 3208 CAT Diesel. 5&2 transmission. 50,000 ACTUAL MILES. Hale pump and apparatus. 1000 gallon tank. 2', 3', 4' outlets. 8ft. 1 in. hose with retractable reel. 70% 11x22.5 radials. Runs, drives, and operates well. \$8900. Located in Twin Falls ID. Call 208-613-0050



2003 Ford F350 Wildland Brush truck. 4X4. Powerstroke Diesel. 112,000 ACTUAL MILES. PS, AC, CC, PW. Near new 235/85/16 Radials on Alloy wheels. Hale 500 gallon pump unit with 2,100ft. reels with hose and FOAM. Truck is in near new condition and runs and operates like new. Former County Fire truck. \$19,900. Located in Twin Falls ID. Call 208-613-0050

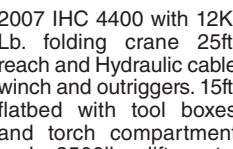


1987 IHC 2564 Single axle dump truck. 8 yard bed. No tailgate. Cummins LTA-10 Diesel with 285HP. Fuller 10 speed transmission. 70% 11/22.5 radials. 35K GVW. 202K ACTUAL MILES. Former well maintained State DOT truck. Runs, operates and drives well. No chassis rust! \$9500. Located in Twin Falls ID. Call 208-613-0050



2008 Sterling 9500 Tandem Axle dump truck with 98K. ACTUAL MILES and CAT C15 Diesel, 500HP. Fuller 13 speed transmission. 15FT, 15 yard round bottom bed with Hi-Lift air tailgate with load tarp. 54.6 K GVW. 14.6K. Front axle. Tuff Trac rear suspension. AC, CC, PS, Jake Brake. Brand new 11/22.5 Radial Tires. Very clean and well maintained truck from a large County Fleet. Runs, operates looks and drives like a new truck. Work ready! \$69,000. Located in Twin Falls ID. Call 208-613-0050

**210 Trucks**  
2007 IHC 4400 with 12K. Lb. folding crane 25ft. reach and Hydraulic cable winch and outriggers. 15ft. flatbed with tool boxes and torch compartment and 3500lb. lift gate. DT466 Diesel with Fuller 10 speed transmission. Low Miles PS, AC, CC. 80% 22.5 radials. Spotlessly clean and well maintained truck from the California DOT. RUST FREE! Runs, drives and operates like new. WORK READY. \$25,900. Located in Twin Falls ID. Call 208-613-0050



1999 IHC 4900 with 8 yard dump bed and 10ft. 4 way snow plow. DT466 Diesel. Allison AUTOMATIC. PS. Good 11/22.5 radials. NO RUST!. Exceptionally clean one owner truck that has been well maintained from the California DOT. Runs and operates like new and is work ready. \$18,900. Located in Twin Falls ID. Call 208-613-0050



1984 IHC 2564 Tandem axle dump truck with 15 foot 15-18 Yard bed. Cummins NTC300 Diesel. Allison HT750 Automatic Transmission. PS, AC. Hendrickson rear suspension. 50% radial tires. 53,000 ACTUAL MILES, 2200 hours. Truck is very clean and runs and drives and operates well. NO ISSUES and NO RUST! Everything works correctly. One owner from a Large City Airport. \$24,900. Located in Twin Falls, ID. Call 208-613-0050.



2002 IHC 4900 with 53 foot Altec manlift with 1300 LB. material handler crane. Has remote control and a Hydraulic GENSET. DT466 Diesel. Allison 6 speed Allison Transmission. PS, AC, CC, engine brake. 49,000 ACTUAL MILES and 4400 HOURS. RUST FREE! 90% 11/22.5 radials. Well maintained former California DOT truck that runs drives and operates like new and it is as clean as a new truck. \$25,900. Located in Twin Falls ID. Call 208-613-0050



2008 Volvo VHD Semi-Tractor with drop down 3rd. axle. Steerable. Volvo D-13 Diesel with 485HP. Fuller 8LL transmission. 4:30 rear ratio. WET KIT. PS, AC, CC, PW, 68,000 GVW. 4 bag air on rears. 8 brand new 11/24.5 rears and 80% fronts and drop axle. Truck is factory original and was ordered new by a large County Dept. in Oregon. 380K. ACTUAL MILES. This one owner truck has been well maintained and is in near new condition. Runs drives and operates like new. \$49,000. Located in Twin Falls ID. Call 208-613-0050

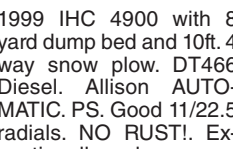


2003 Ford F350 Wildland Brush truck. 4X4. Powerstroke Diesel. 112,000 ACTUAL MILES. PS, AC, CC, PW. Near new 235/85/16 Radials on Alloy wheels. Hale 500 gallon pump unit with 2,100ft. reels with hose and FOAM. Truck is in near new condition and runs and operates like new. Former County Fire truck. \$19,900. Located in Twin Falls ID. Call 208-613-0050



2008 Sterling 9500 Tandem Axle dump truck with 98K. ACTUAL MILES and CAT C15 Diesel, 500HP. Fuller 13 speed transmission. 15FT, 15 yard round bottom bed with Hi-Lift air tailgate with load tarp. 54.6 K GVW. 14.6K. Front axle. Tuff Trac rear suspension. AC, CC, PS, Jake Brake. Brand new 11/22.5 Radial Tires. Very clean and well maintained truck from a large County Fleet. Runs, operates looks and drives like a new truck. Work ready! \$69,000. Located in Twin Falls ID. Call 208-613-0050

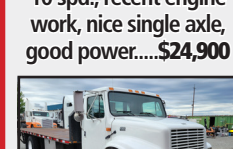
**210 Trucks**  
2007 IHC 4400 with 12K. Lb. folding crane 25ft. reach and Hydraulic cable winch and outriggers. 15ft. flatbed with tool boxes and torch compartment and 3500lb. lift gate. DT466 Diesel with Fuller 10 speed transmission. Low Miles PS, AC, CC. 80% 22.5 radials. Spotlessly clean and well maintained truck from the California DOT. RUST FREE! Runs, drives and operates like new. WORK READY. \$25,900. Located in Twin Falls ID. Call 208-613-0050



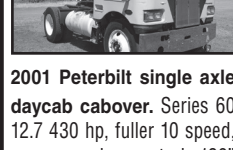
1999 IHC 4900 with 8 yard dump bed and 10ft. 4 way snow plow. DT466 Diesel. Allison AUTOMATIC. PS. Good 11/22.5 radials. NO RUST!. Exceptionally clean one owner truck that has been well maintained from the California DOT. Runs and operates like new and is work ready. \$18,900. Located in Twin Falls ID. Call 208-613-0050



1984 IHC 2564 Tandem axle dump truck with 15 foot 15-18 Yard bed. Cummins NTC300 Diesel. Allison HT750 Automatic Transmission. PS, AC. Hendrickson rear suspension. 50% radial tires. 53,000 ACTUAL MILES, 2200 hours. Truck is very clean and runs and drives and operates well. NO ISSUES and NO RUST! Everything works correctly. One owner from a Large City Airport. \$24,900. Located in Twin Falls, ID. Call 208-613-0050.



2002 IHC 4900 with 53 foot Altec manlift with 1300 LB. material handler crane. Has remote control and a Hydraulic GENSET. DT466 Diesel. Allison 6 speed Allison Transmission. PS, AC, CC, engine brake. 49,000 ACTUAL MILES and 4400 HOURS. RUST FREE! 90% 11/22.5 radials. Well maintained former California DOT truck that runs drives and operates like new and it is as clean as a new truck. \$25,900. Located in Twin Falls ID. Call 208-613-0050



2008 Volvo VHD Semi-Tractor with drop down 3rd. axle. Steerable. Volvo D-13 Diesel with 485HP. Fuller 8LL transmission. 4:30 rear ratio. WET KIT. PS, AC, CC, PW, 68,000 GVW. 4 bag air on rears. 8 brand new 11/24.5 rears and 80% fronts and drop axle. Truck is factory original and was ordered new by a large County Dept. in Oregon. 380K. ACTUAL MILES. This one owner truck has been well maintained and is in near new condition. Runs drives and operates like new. \$49,000. Located in Twin Falls ID. Call 208-613-0050

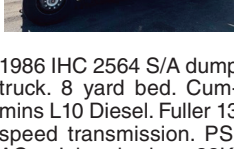


2003 Ford F350 Wildland Brush truck. 4X4. Powerstroke Diesel. 112,000 ACTUAL MILES. PS, AC, CC, PW. Near new 235/85/16 Radials on Alloy wheels. Hale 500 gallon pump unit with 2,100ft. reels with hose and FOAM. Truck is in near new condition and runs and operates like new. Former County Fire truck. \$19,900. Located in Twin Falls ID. Call 208-613-0050



2008 Sterling 9500 Tandem Axle dump truck with 98K. ACTUAL MILES and CAT C15 Diesel, 500HP. Fuller 13 speed transmission. 15FT, 15 yard round bottom bed with Hi-Lift air tailgate with load tarp. 54.6 K GVW. 14.6K. Front axle. Tuff Trac rear suspension. AC, CC, PS, Jake Brake. Brand new 11/22.5 Radial Tires. Very clean and well maintained truck from a large County Fleet. Runs, operates looks and drives like a new truck. Work ready! \$69,000. Located in Twin Falls ID. Call 208-613-0050

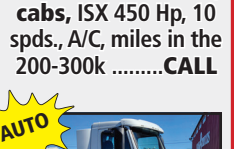
**210 Trucks**  
1986 IHC 2564 S/A dump truck. 8 yard bed. Cummins L10 Diesel. Fuller 13 speed transmission. PS, AC, Jake brake. 33K. GVW. Plumbed for trailer. Near new 11/22.5 radial tires. 200K ACTUAL MILES. Extremely clean and well maintained former State DOT truck that is work ready. \$16,900. Located in Twin Falls ID. Call 208-613-0050



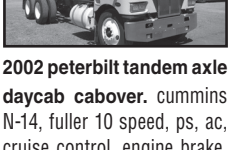
2001 Freightliner Classic with 20 yard dump bed with strong arm. Cummins Diesel with 325HP. 10 Speed. PS, AC, CC. Bed is Aluminum and you can't tell it from new. The entire truck is spotless. All tires are Super Single 425/65/22.5 on Alcoa wheels. They are 90%. 66,000 GVW. plus strong arm. Truck is in near new condition and is all original on the paint. NO RUST! 170,000 MILES. Runs, drives and operates like a new truck. Work ready, \$39,900. Located in Twin Falls ID. Call 208-613-0050



2000 IHC with Altec 53' articulating double bucket man lift with material handler. DT466 diesel. Allison Automatic. PS, AC, CC. New 22.5 radials. Certified. One owner truck from a State Agency that is in near new condition. It runs, drives, and operates like new. WORK READY, \$19,900. Located in Twin Falls ID. Call 208-613-0050



1988 Ford C8000 firetruck. 3208 CAT Diesel. 5&2 transmission. 50,000 ACTUAL MILES. Hale pump and apparatus. 1000 gallon tank. 2', 3', 4' outlets. 8ft. 1 in. hose with retractable reel. 70% 11x22.5 radials. Runs, drives, and operates well. \$8900. Located in Twin Falls ID. Call 208-613-0050



2003 Ford F350 Wildland Brush truck. 4X4. Powerstroke Diesel. 112,000 ACTUAL MILES. PS, AC, CC, PW. Near new 235/85/16 Radials on Alloy wheels. Hale 500 gallon pump unit with 2,100ft. reels with hose and FOAM. Truck is in near new condition and runs and operates like new. Former County Fire truck. \$19,900. Located in Twin Falls ID. Call 208-613-0050



1987 IHC 2564 Single axle dump truck. 8 yard bed. No tailgate. Cummins LTA-10 Diesel with 285HP. Fuller 10 speed transmission. 70% 11/22.5 radials. 35K GVW. 202K ACTUAL MILES. Former well maintained State DOT truck.