

Classifieds



800-882-6789

View all classified ads for free at CapitalPress.com

Classified Index

Table with 2 columns listing various categories and their corresponding page numbers, such as Acreage (579), Alpacas & Llamas (743), and Livestock Equip. & Supplies (869).



102 Public Notices

NOTICE OF PROPOSED RULEMAKING ODA CHAPTER 623 OREGON HAZELNUT COMMISSION Growers assessment rate reduction hearing

IT'S SO EASY TO PLACE CAPITAL PRESS CLASSIFIED ADS. . . PHONE TOLL FREE 1-800-882-6789

LIST YOUR CLASSIFIEDS TODAY. 1-800-882-6789 FAX 503-364-2692 • CapitalPress.com

102 Public Notices

Pursuant to ORS Chapter 819: Notice is hereby given that the following vehicle will be sold, for cash to the highest bidder, on 08/16/2022.

Your ad here! 800-882-6789 Call

Newsday Crossword

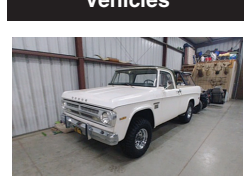
ACROSS 1 Cumbersome to carry 6 Coalition of politicians 10 Chunk of concrete 14 Nose-horned safari beast 15 Lion's cry 16 Pepsi or Coke 17 Unconfirmed report 18 Golden Rule preposition 19 Ripened, as cheese 20 Peddle merchandise 23 NYSE debut 24 Point opposite SSW 25 Guide a car 28 Attention-getting whisper 30 Basic cable network 33 Israeli airline 34 Made a landing 36 Husbands of countesses 38 Be evasive in answering 41 Stand up 42 Supply the money for 43 Degs. in finance 44 Winter hrs. in Colorado 45 Evening, in some ads 47 "No more for me, thanks" 49 ___ favor (please, to Ruiz) 50 Incoming plane stat. 51 Echo words unthinkingly 58 One-liner, for example

BUSY BIRDS by Bruce Venzke Edited by Stanley Newman www.stanxwords.com

8 Grains in granola bars 9 Headgear for queens and kings 10 Frighten 11 Theater tier 12 Beverages like beer 13 Not well-behaved 21 TV host Winfrey 22 Poker-pot starters 25 Speaks unclearly 26 Unspoken but implied 27 Antlered cousins of deer 28 Make angry 29 Surprise greatly 30 Large family 31 Overstuff 32 Government-issued IDs 33 Dutch cheese 35 Walked away 37 24-hr. cash dispensers 39 Male choir voice 40 Author Wharton 46 Amusingly unexpected 48 President Van Buren 49 Smooth out with an iron 50 Japanese printer brand 51 Global top or bottom 52 Similar (to) 53 ___ fish sandwich 54 Prefix for freeze 55 Workplace assistant 56 Large quantity 57 List-ending abbr. 58 Plane without propellers 61 Guileful

Answers in classification 546

201 Antique/Classic Vehicles



1971 Dodge Power Wagon W100, 4x4, 318 V8, 4 speed, 410 Posi gears, 1 owner, all original, excellent condition, \$35,000. SUTTER, CA 530-701-6933

210 Trucks



2007 IHC 4400 with 12K. Lb. folding crane 25ft. reach and Hydraulic cable winch and outriggers. 15ft. flatbed with tool boxes and torch compartment and 3500lb. lift gate. DT466 Diesel with Fuller 10 speed transmission. Low Miles PS, AC, CC. 80% 22.5 radial tires. Spotlessly clean and well maintained truck from the California DOT. RUST FREE! Runs, drives and operates like new. WORK READY. \$25,900. Located in Twin Falls ID. Call 208-613-0050



2001 IHC 2574 tandem axle dump truck. 15 yr. bed with HiLift tailgate. Cummins N14 Diesel with 425 HP. 13 Speed transmission. Jake Brake, PS, AC, CC. 90% 22.5 Radial Tires. Spotlessly clean and well maintained, one owner truck from a large State DOT. RUST FREE! \$39,000. Located in Twin Falls, ID. Call 208-613-0050

THIS AD SPACE could be yours! 1-800-882-6789 or FAX 503-370-4383 CapitalPress.com

Farm Seller.com AMERICA'S FARM AND RANCH DATABASE

210 Trucks



1986 IHC 2564 S/A dump truck. 8 yard bed. Cummins L10 Diesel. Fuller 13 speed transmission. PS, AC, Jake brake. 33K GVW. Plumbed for trailer. Near new 11/22.5 radial tires. 200K ACTUAL MILES. Extremely clean and well maintained former State DOT truck that is work ready. \$16,900. Located in Twin Falls ID. Call 208-613-0050



1993 Spartan Firetruck. 8.3 Cummins Diesel. Allison AT. PS, AC. 750 gallon tank. Suction draft and spray. 2'3"; and 150 Foot. 1" hose and electric rewind reel with nozzles. Brand new radial 22.5 tires. 80K ACTUAL MILES. Like brand new truck from the Cal. Dept. of General Services. \$13,900. Located in Twin Falls ID. Call 208-613-0050



1984 IHC 2564 Tandem axle dump truck with 15 foot 15-18 Yard bed. Cummins NTC300 Diesel. Allison H7750 Automatic Transmission. PS, AC. Hendrickson rear suspension. 50% radial tires. 53,000 ACTUAL MILES, 2200 hours. Truck is very clean and runs and drives and operates well. NO ISSUES and NO RUST! Everything works correctly. One owner from a Large City Airport. \$24,900. Located in Twin Falls, ID. Call 208-613-0050.

BEST SELLERS "...Had great results and will definitely use Capital Press again." Len St. Claire, Horseshoe Loop, Lebanon, OR Call 1-800-882-6789 to advertise. 1-800-882-6789 CapitalPress.com

210 Trucks



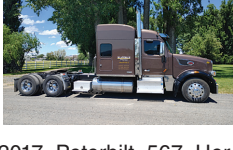
2002 IHC 4900 with 53 foot Altec manlift with 1300 LB. material handler crane. Has remote control and a Hydraulic GENSET. DT466 Diesel. Allison 6 speed Allison Transmission. PS, AC, CC, engine brake. 49,000 ACTUAL MILES and 4400 HOURS. RUST FREE! 90% 11/22.5 radials. Well maintained former California DOT truck that runs drives and operates like new and it is as clean as a new truck. \$25,900. Located in Twin Falls ID. Call 208-613-0050



2008 Volvo VHD Semi-Tractor with drop down 3rd. axle. Steerable. Volvo D-13 Diesel with 485HP. Fuller 8LL transmission. 4:30 rear ratio. WET KIT. PS, AC, CC, PW. 68,000 GVW. 4 bag air on rears. 8 brand new 11/24.5 rears and 80% fronts and drop axle. Truck is factory original and was ordered new by a large County Dept. in Oregon. 380K. ACTUAL MILES. This one owner truck has been well maintained and is in near new condition. Runs drives and operates like new., \$49,000. Located in Twin Falls ID. Call 208-613-0050



1977 OSHKOSH 6x6 fire truck with 21,000 ACTUAL MILES. 1700 gallon tank. High output joystick controlled water cannon on top. CAT 1693 Diesel with 400HP. 6 near new 455/55R/22.5 tires. Truck runs drives and operates as it should and is very clean and been well maintained. It came from the City of Sacramento Fire Department. WORK READY. \$ 13,900. Located in Twin Falls ID. Call 208-613-0050.



2017 Peterbilt 567 Heritage Classic MX 510HP, deleted. 590K miles, 30k on new head and gasket. 80" sleeper, Front disc. 18 speed. 1 owner, 1 driver. Loaded. Blackman Farms, Inc. Klamath Falls, OR. 541-891-7632



2004 IHC 7400 Digger Derrick with Altec D3050 TR derrick. 50ft. reach. 30,000Lbs. lift. 4 outriggers. 2 tool circuits, Upper and lower controls. 20,000LB. front winch with Capstan. Near new 11/22.5 radials. DT530 Diesel with Allison Automatic trans. PS, AC, CC. Side lock rear differentials. 98,000 ACTUAL MILES. One owner truck from a large Electrical Utility. Everything on the truck works properly. Clean, well maintained and work ready, \$19,000. Located in Twin Falls ID. Call 208-613-0050



1980 OSHKOSH 6x6 tandem axle cab and chassis. 20,000 ACTUAL MILES. 2000 HOURS. NTC290 Cummins Diesel. Fuller 9 speed with 3 speed auxiliary. PS, AC. 11/22.5 rears, 385/65/22.5 fronts. All are 90% of new. Spotlessly clean and well maintained all wheel drive that is in near new condition. It runs, drives and operates like new, \$16,900. Located in Twin Falls ID. Call 208-613-0050

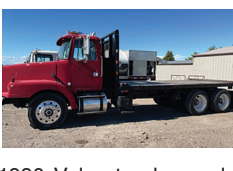
Capital Press CLASSIFIEDS 1-800-882-6789 CapitalPress.com

210 Trucks

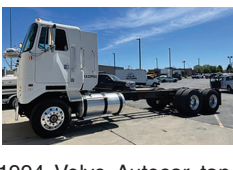
1995 Kodiak: CAT engine, 6 speed, 18ft flatbed dump, \$15,000. 1999 Western Star, N14, new 18 speed, 46,000lb rear ends, with lockers and Chalmers suspension, drop axle, day cab, \$40,000, Satsop, WA 360-249-5871; 360-470-1717



2001 Freightliner FL112 water truck. Tandem axle. 4000 gallon. 2 sprays front, 2 sprays rear and 1 on each side. Cummins ISM Diesel with Fuller 10 Speed transmission. Deutz Diesel powered Gorman Rupp pump. Very clean and well maintained Southern California County truck with 125 K. MILES that is work ready. \$34,900. Located in Twin Falls ID. Call 208-613-0050



1990 Volvo tandem axle with 19ft. flatbed. Cummins NTC 315 Diesel. Fuller 9 speed transmission. PS, AC. Good rubber. 54K GVW. Very clean and runs and drives well, \$9900. Located in Twin Falls ID. call 208-613-0050

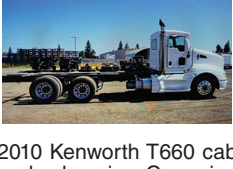


1994 Volvo Autocar tandem axle cab and chassis. 193in cab to trunnions. Will take a 25ft bed. Detroit 60 Series. 430HP. Fuller 9 speed Ttransmission. PS, AC, Jake brake. Reyco spring rears. Alcoa alloy wheels and usable rubber. Clean and runs and drives well, \$9900. Located in Twin Falls ID. Call 208-613-0050

210 Trucks



4000 Gallon Water Truck: 2007 Mack, 400HP, Allison 4000 Series transmission, pony motor, all new plumbing, hose reel, Chalmers rear suspension, good rubber, newly assembled, used tank, \$52,000. ATWATER, CA 209-604-1342



2010 Kenworth T660 cab and chassis. Cummins ISX 400 Diesel. 10 speed. 52K GVW. A/C, CC, Power locks, engine brake, air suspension. DPF Certified clean idle. Alloy wheels with near new 11/22.5 radials. 224" WB. Spotlessly clean and well maintained lease return with 380K miles that runs and drives like new has ZERO RUST and is work ready. \$39,900. Located in Twin Falls ID Call 208-613-0050



2002 IHC 4900 Crew Cab Wild land Fire Engine. 4X2. DT466 Diesel. Allison MD3560, 6 speed. Automatic. Sundstrand Hydrostatic with Waterous CPK-3-500GPM pump. (2) 1" hose reels. 33K. GVW with 75% 11/22.5 tires. 140K. ACTUAL MILES. One owner truck from the California Dept. of Forestry. Very clean and well maintained and is work ready. \$16,900. Located in Twin Falls ID. Call 208-613-0050

HOT! SAVINGS at Capital Press 1-800-882-6789 CapitalPress.com

210 Trucks



1997 Ford 2000 gallon water truck. 8.3 Cummins motor, Allison transmission, AC, 2 fronts, 2 rears, 1 side spray. Like new condition, \$28,500 OBO. Atwater, CA. 209-604-1342



1992 IHC 4900 Crew Cab Wildland Fire Engine with DT466 Diesel and Allison MTB653, 5 speed. Automatic. Sundstrand hydro pump with Darley JMP500 GPM pump. New REBUILT ENGINE BY JASPER. 2,324 MILES on it. (2) 1" hose reels and 75% 11/22.5 radials. Operates as new. One owner truck from the California Dept. of Forestry and has been well maintained, clean and work ready. \$15,900. Located in Twin Falls ID. Call 208-613-0050



2000 Kenworth 4 Axle Dump Truck, 25 Yard Capacity, Tarps, 3406E, 18 Speed, Runs Great, \$59,000 Wilsonville, OR. 503-260-0303



1976 Mack 132,378 miles, high side dump, good tires, new clutch, \$7,000. Bainbridge Island, WA. 253-691-9891

R & G MACHINING AND ENGINE PARTS COMPLETE DIESEL MACHINE SHOP AND TRUCK REPAIR MULINO, OREGON • SHOP: 503-829-6038 • NATIONWIDE: 1-800-823-6038 We Absolutely, Positively Have The Best Remanufactured Engines Available Anywhere! Huge Inventory • Expert Technical Assistance

Table with columns for engine brands and prices, including Cummins, Perkins & Isuzu, and John Deere & In. Includes text: THIS MONTH'S SPECIALS Rebuilt & Balanced Injectors Hi Flow Turbos Rebuilt Injection Pumps FORD - GM - DODGE

POWER FLEET & COMMERCIAL SALES MEDIUM DUTY DEALER

2021 Chevrolet Silverado Medium Duty Work Truck 3500HD CC Work Truck. Includes contact info for Jim Church, Delana Johnson, Brian Heinrich, Ryan Church.

CHEVROLET BUSINESS ELITE POWER FLEET - COMMERCIAL WWW.POWERAUTOGROUP.COM 503-769-7100