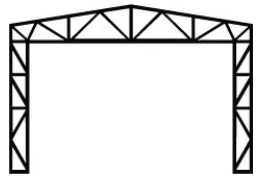
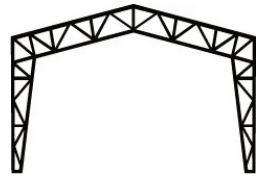


# Steel on the inside, where it matters most.



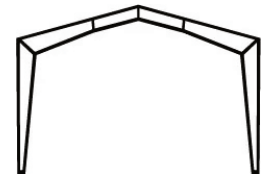
**DELTA TRUSS**

Designed as quick-to-permit, fully engineered kits. Ideally suited for 'do-it-yourselfers'. Garages, Work Shops, RV Storage, and Small commercial installations.



**VAULTED CLEARSPAN**

Looking for a building that offers maximum overhead clearance and wide open, column-free spaces? The Web Steel Building Northwest's Vaulted Clearspan Truss may be the solution you need.



**RIGID FRAME**

Web Steel Buildings Northwest's professionally-engineered Rigid Frame system provides excellent design flexibility and best possible performance.



37396 Ruben Lane, Sandy OR 97055

**SHOPS | GARAGES  
COMMERCIAL | INDUSTRIAL**

Toll Free: 1-855-668-7211

Local: 503-668-7211

visit us online at [www.WSBNW.com](http://www.WSBNW.com)