

**826 Organic**

ORGANIC CERTIFIED Grass Hay: 3x4 bales, weedy, 1st cutting, 96 tons, \$330/ton. Wallowa, OR. 541-263-1545

**80 Tons Organic**

Beardless Barley/Pea Hay. 3x4 bales, good quality. Reasonable price. Milton Freewater, OR (509)301-1385

**869 Livestock Equipment & Supplies**

**Hay Bonnet Horse Feeders In Stock:** NW Farm Supply, Hermiston, OR. 800-801-5650 or Mike 541-561-6047

Powder River Chute purchased 10 years ago, self catch. Used very little. Like now condition, \$5800. Woodburn, OR. 503-957-5276



(1) Kirby 4 bale feeder, \$25,000. Good working Condition, ATWATER, CA 209-604-1342

Newer Powder River self catching chute with stabilizer secondary head catch. Great shape, \$5500 cash. SUTHERLIN OR. 541-459-1304 Ask for John



New IA Portable Hay Feeder:  
•8 hole wheels  
•Swing up tongue  
•Inner bunk  
•35 stations  
\$6,395  
2 or more \$6,195 each.

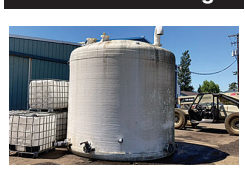
**MTC Sales**  
Bend, OR.  
Scott: 541-815-2953  
Visit:  
[www.mtcsales.net](http://www.mtcsales.net)

•••Partner Dealers•••  
**Aleman Equipment**  
Dutchess, Alberta, CAN.  
Jerry: 403-793-7341  
**Equipment Finders**  
Twin Falls, ID  
Dave: 208-731-4040  
**Vista Equipment**  
Hazen, NV.  
Jerry: 775-741-0688

**872 Dairy Equip. &**

**Kiln Dried Shavings:** Smaller truck loads now available. Hogfuel also available. Call for details. Forest Grove, OR. 503-849-0216

**875 Tanks & Storage**



9000 gallon Fiberglass water tank. 14" diameter. Several outlets. Can Deliver, \$3500. Brooks, OR. 503-580-4261



WANTED: 1000 gallon propane tank or (2) 500 gallon propane tanks in good condition. Will pick up. Canby, OR 510-813-9100

**Farm Seller™**  
AMERICA'S FARM AND RANCH DATABASE

**887 Irrigation Equip-**

**878 Generators**



1996 Spectrum 350 KW GenSet. Detroit 8V92, 568 HP. 260 ACTUAL HOURS. 480v.240v. 120v. 1 and 3 PH. Mounted on an HD tandem axle trailer with 350 gal. fuel tank. New 14 ply radial tires. Former City unit from Southern Arizona. Like New Cond. WORK READY! \$19,900. Located in Twin Falls Id. Call 208-613-0050. Twin Falls, ID.



**GENERATORS:** Used, low hour takeouts, 20KW to 2000KW, diesel, propane, & natural gas. Cooperstown, ND. We ship nationwide. 701-371-9526 or 701-367-4305 abrahamindustrial.com

**887 Irrigation Equip-**

**(40) Used Pivots: New listings coming.** Engines, pumps, Garden Valley, ID. Call Mike at 208-420-1480, or see [www.pivotsplus.com](http://www.pivotsplus.com)

**Water Winch Model 1400M** soft hose: 500 foot hose, 3 years old. Used last season, \$2500.  
**Water Winch 5500** soft hose, 2 extras, same model for parts or to refurbish, \$1500 for all three.  
**CENTRALIA, WA**  
(360)269-1783



NEW IA Pivot Track Closer. Heavy Duty with adjustable cone discs. From 60" to 12" closing width. Hydraulic Depth Control water fill roller packer, \$5,495.  
**MTC Sales**  
Bend, OR.  
Scott: 541-815-2953  
Visit:  
[www.mtcsales.net](http://www.mtcsales.net)

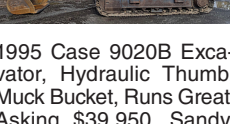
**872 Dairy Equip. &**

**Kiln Dried Shavings:** Smaller truck loads now available. Hogfuel also available. Call for details. Forest Grove, OR. 503-849-0216

**875 Tanks & Storage**



9000 gallon Fiberglass water tank. 14" diameter. Several outlets. Can Deliver, \$3500. Brooks, OR. 503-580-4261



WANTED: 1000 gallon propane tank or (2) 500 gallon propane tanks in good condition. Will pick up. Canby, OR 510-813-9100

**Farm Seller™**  
AMERICA'S FARM AND RANCH DATABASE

**887 Irrigation Equip-**

**899 Heavy & Industrial Equipment**

**CASE INDUSTRIAL PARTS**  
We sell genuine, after market, and used CASE parts at discount prices nationwide.  
Call For Free Catalog.

**CENTRAL EQUIPMENT**  
AFTER MARKET & USED PARTS  
Medford, OR  
**(888) 593-8749**



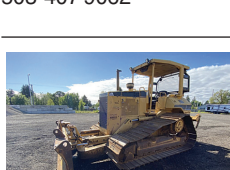
John Deere 135G Excavator, Hydraulic Thumb, Pin Grabber, 2 Buckets, Auxiliary Hydraulics, Blade, 7600 Hours, Asking \$95,500. Sandy, OR. Call Pepe: 503-544-3232; Call Pat: 503-407-9062



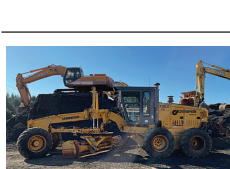
2017 Hyundai 35Z-9A Excavator, Hydraulic Thumb, Quick Connect, Yanmar Engine, 2620 Hours, Blade, Asking \$42,500. Sandy, OR. Call Pepe: 503-544-3232; Call Pat: 503-407-9062



2015 Case CX130C Excavator, Hydraulic Thumb, Hydraulic Coupler, Isuzu Diesel, Dig Bucket, 4728 Hours, Asking \$89,500. Sandy, OR. Call Pepe: 503-544-3232; Call Pat: 503-407-9062



1997 Caterpillar D5M LGP Dozer, 6 Way Blade, CAT 3116 Engine, Multi-shank Ripper, Asking \$57,500. Sandy, OR. Call Pepe: 503-544-3232; Call Pat: 503-407-9062



Champion 736A V VHP Motor Grader, AWD, Cummins Engine, 175" Blade, Multi-shank Ripper, Asking \$34,500. Sandy, OR. Call Pepe: 503-544-3232; Call Pat: 503-407-9062



2014 Hyundai Robex 145 LCR-9 Excavator, Hydraulic Thumb, Quick Connect, Mitsubishi Engine, 102" Blade, 38" Dig Bucket, 6535 Hours, Asking \$64,500. Sandy, OR. Call Pepe: 503-544-3232; Call Pat: 503-407-9062



Takeuchi TB135 Track Hoe: hour meter 1893, very clean machine. One owner, \$35,000. Colton, OR. Please call 503-314-0145

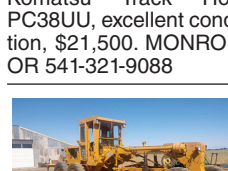
"I get great results with Capital Press...and I have for over 20 years."  
Mark, Pro Truck  
Call 1-800-882-6789 to advertise.

Does your business need calls, customers and sales? Advertise in Capital Press Line Ad Classifieds.  
Call 1-800-882-6789

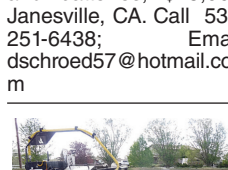
**899 Heavy & Industrial Equipment**



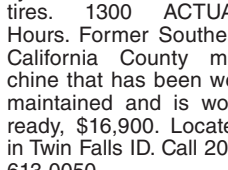
DB CAT Model 14A with Model 70 scraper and ripper. Work Ready, \$25,000. Redding, CA 530-365-3153



Komatsu Track Hoe: PC38UU, excellent condition, \$21,500. MONROE, OR 541-321-9088



CAT 12F Motor Grader: 89H1610, 7550 hours, 14ft blade, CAT ripper, excellent condition, good brakes, new cutting edges and batteries, \$25,000. Janesville, CA. Call 530-251-6438; Email: dschroed57@hotmail.com



2013 CimLine CRACK PATCHER. Tandem axle. 230 gallon, 18ft. heated hose and wand. Isuzu 3 cylinder diesel. Near new tires. 1300 ACTUAL Hours. Former Southern California County machine that has been well maintained and is work ready, \$16,900. Located in Twin Falls ID. Call 208-613-0050

**REPLACEMENT DECAL SETS**  
Construction, Forestry & Ag Equipment. Fast, Knowledgeable, Reliable Service. 215-536-5339 email: info@CustomServicesCompany.com  
Thousands of sets, Old & New, in our digital inventory.  
[www.QuipCal.com](http://www.QuipCal.com)

**902 Farm Equip. Parts**

**902 Farm Equip. Parts**

**Nyssa Tractor & Implement**  
Our yard has 5 miles of road, the rest is farm machinery & parts.  
[www.nyssatractor.com](http://www.nyssatractor.com)  
Toll Free (833) 372-4020  
Nyssa, OR  
S201705-1

**902 Farm Equip. Parts**

**902 Farm Equip. Parts**

**BIG TRACTOR PARTS, INC.**  
~ GEARED FOR THE FUTURE ~

**STEIGER TRACTOR SPECIALIST**

- 1. We are your source for new & used Steiger drivetrain parts Series 1-9300 Series.
- 2. We rebuild Spicer manual transmissions, Fugi power shift transmissions, dropboxes & axle with ONE YEAR WARRANTY!
- 3. We now rebuild computer control boxes for Steiger tractors 1982-1999.

**800-982-1769**

[www.bigtractorparts.com](http://www.bigtractorparts.com)

**905 Antique Farm Equipment & Parts**

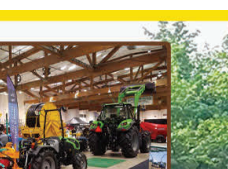


Restored 801 Ford Diesel Tractor: \$7500. Redding, CA 530-365-3153

Does your business need calls, customers and sales? Advertise in Capital Press Line Ad Classifieds.  
Call 1-800-882-6789

**911 Hay Equipment**

**911 Hay Equipment**



2011 Twin Star Hay Rake Model G2-7: 30ft working width, field ready, \$20,500 OBO. Monmouth, OR 503-999-9662

**Retiring**

605H Vermeer round baler, \$3500 OBO. New Holland disc cutter, Model 463, \$3500. John Deere 8000 Seeder, \$1800. New Holland Model 426, for parts or repair, \$2500. New Holland 256 rake, \$500. MONUMENT, OR 541-934-2257

John Deere 925 MoCo Mower: 10ft mower conditioner, \$5,000. Parting out 1690 Case Tractor, \$1000. COTTAGE GROVE, OR 541-953-7990

Krone BiG Pack 1270 Multi Baler: 13,700 bales, 250 hours, makes up to 9 bales per bale, very nice machine. Always stored under cover, \$75,000 OBO Rickreal, OR. 503-580-8943

IF YOU HAVE A BEEF - sell it in next week's Capital Press!

**905 Antique Farm Equipment & Parts**



1949 John Deere Model R Tractor: Good condition, 2 cylinder diesel, \$5800. Longview, WA 360-957-6139

**907 Nursery Equipment & Supplies**



Nursery stakes: 1/4"x6" on metal pallets. Used 4 years. Great condition, \$1/ stake. Lafayette, OR. 503-437-4833

**USED NURSERY CONTAINERS:**

Used, but reusable nursery containers. All sizes. Inventory changes daily. Call for current availability and prices. Sawyer Farms, Scio OR. 503-769-3417, juddsfarm@wvi.com (also wanted: used containers)

**FRESH SAWDUST:** Consistently fair pricing. 9 Unit Loads Now Available Forest-Grove, OR. For pricing call 503-849-0216

**911 Hay Equipment**

**RCO Baits**  
Gophers • Squirrels  
Voles • Moles  
Dealer Locator  
1-800-214-2248  
Harrisburg, OR 5272464-1

**CLASSIFIED LINE ADS GET RESULTS**  
1-800-882-6789  
CapitalPress.com

**911 Hay Equipment**

**New Holland 1048 Bale Wagon:** Serial #3185. New rebuilt engine, 361 CID Ford Gas, all new hydraulic hoses, electric fan, dual 40 gallon gas tanks, weight box. Has not been field tested. Need to test hydraulics, \$6500.  
**ROCHESTER, WA**  
(360)273-5442

**HAY EQUIPMENT:**

Hay Squeeze/ dozer 4x4 combo, diesel, on tires, \$18,500. Deutz Tedder, \$1,400. Ford Rollover Plover, \$2,800. John Deere Land plane, \$3,700. Small Ripper, 10 foot John Deere off set disc. 16 foot disc on tires. Packer. Klamath Falls, Oregon. John 541-892-1948

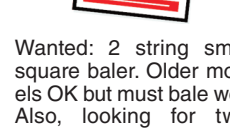
**917 Orchard/Vineyard Equipment**



Orchard sprayer Isuzu minitruck 4x4 with raven 330 controller, 3 boom manifolds, flow meter, centrifugal pump, 150 gallon tank, hydraulic folding booms, fully automated, \$17,000. Dayton, OR. 503-437-4833



Littab Berry Harvester Over the Row: Kubota Diesel Engine. A must have for your farm. Flotation tires. Very well maintained. Only 2,406 hours, small berry farm single owner operated, \$62,000 OBO. Serious Inquiries only. No trades, no owner financing. Woodburn, OR. 503-881-7200. Email: bilianbene@gmail.com



**Krone Baler 1290HDP:** FIELD READY. Under 30,000 bales, 1290HD. \$48,500. Willing to carry contract. Jefferson, OR. 503-932-0012

**911 Hay Equipment**

Frontier Hay Rake WR5417-2013: only used for 900 acres, \$28,000 OBO. Othello, WA. 509-488-6321



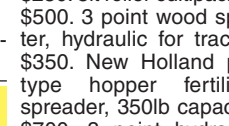
Hay Squeeze built on a 2001 International 4700 frame new hydraulic system and new squeeze head lifts 14ft6in, \$75,000 PARAGONAH, UT (435)590-5446

**Selling the Farm**

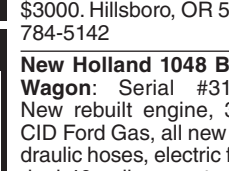
Case/ New Holland T4 75HP tractor, 850 hours, front loader, cab, \$50,000. New Holland 575 Baler, \$8500. New Holland 7220 Haybine, \$14,000. New Holland tedder rake, \$1,000. Tedder rake, \$2500. New Holland hay grapple/ accumulator, bale pick up, \$3500. New Holland 256 Hay rake, \$1000. 10 bale hay grapple, swivels 180 degrees, ties, loads, quick disconnect, \$1800. John Deere 10ft disc, \$1000. John Deere 7ft brush hog, \$400. John Deere double bottom plow, break away, \$250. Oliver 8ft grain drill, \$250. 8ft roller cultipacker, \$500. 3 point wood splitter, hydraulic for tractor, \$350. New Holland pull type hopper fertilizer spreader, 350lb capacity, \$700. 3 point hydraulic auger with 6in, 9in, 12in and 24in bits, \$2000. Hiatt 20ft gooseneck horse/stock trailer with new axles, tires and wheels, \$3000. Hillsboro, OR 503-784-5142

**2017 John Deere 5075M:** 1341 hours, forks, bucket, foam filled tires, 75HP, \$42,000. LEBANON, OR 706-570-9696

**Massey Ferguson Tractor:** 135 Perkins Diesel engine, 45HP, front tires new, rear tires 75%, loader with bucket and spear, 2 hydraulic ports, runs good, \$8500. **Ford 8N Tractor,** front tires 80%, rear tires 65%, electronic ignition, 3 point inspected, pressure tested, new fluid, \$1800. ROCHESTER, WA 360-273-5442



Tractor- New Holland 2012 T-6 155. 850 hours with 855TL loader with 3rd function. One owner. Excellent Condition, \$100,000. Southeastern, OR. 541-219-0741



**1989 IH DUMP TRUCK,** low mileage, 13 speed, 90% tires, 5 yd dump. \$10,000. Lakeview, OR 503-939-3753

**1989 John Deere 9400 Combine:** 4946 engine, 3843 separator hours, small grain, rasp bar, lots of recent work, excellent condition. Comes with 912 pickup and 915 wheat header. \$30,000 with both headers. Brooks, OR. 503-932-8585

**Steel Side racks for 24' bed,** bolt on, \$4500. JEFFERSON, OR 503-932-0012

**920 Tractors**

**920 Tractors**

**Nice Tractor-2005 NH TN75 DA**  
2508 Hours, Loader W/ Q/C bucket, weights  
**\$27,500**  
Springfield, OR **CALL 541-520-9230**

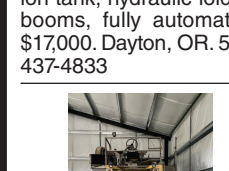


**920 Tractors**

**920 Tractors**

**Branson TRACTORS**

**35 SERIES 5835R**



• Cast Iron Housings, Metal Hood And Fenders  
• Large Operator's Platform  
• Adjustable 3-point Hitch Links  
• Fender Mounted 3 Point Lift  
• "Wet" Clutch And Shuttle With Sensitivity Control Adjustment

**THE TRACTOR STORE**

**541-342-5464**  
5450 W. 11<sup>TH</sup>, EUGENE OR

**920 Tractors**

**920 Tractors**

**920 Tractors**

**920 Tractors**

**920 Tractors**

**920 Tractors**

**920 Tractors**

**920 Tractors**

**920 Tractors**

**920 Tractors**

**920 Tractors**

**920 Tractors**

**920 Tractors**

**920 Tractors**

**920 Tractors**

**920 Tractors**

**920 Tractors**

**920 Tractors**

**920 Tractors**

**920 Tractors**

**920 Tractors**

**920 Tractors**

**920 Tractors**

**920 Tractors**

**920 Tractors**

**920 Tractors**

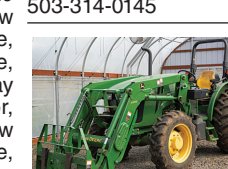
**920 Tractors**

Like New Massey Ferguson 135: Perkins gas, 1700 ACTUAL HOURS, power steering, 12 speed, excellent condition, \$8500. Lyons, OR. 503-859-2063; 503-559-5570

Wanted: Ferrari or Carrera tractor, with 3 point hitch, equal side tires, 4WD. Call or leave text message 541-450-1726



4230 John Deere tractor Good rubber on dually, 7618 hours, \$22,500. Colton, OR. Call Randy 503-314-0145



2017 John Deere 5075M: 1341 hours, forks, bucket, foam filled tires, 75