

Classifieds

OMISSION & ERROR: Capital Press will exercise due care to prevent omissions and mistakes, but its total liability for any error, in any advertisement published, shall not exceed the proportionate space in which the error occurred. Credit, when allowable, will apply to the first insertion only.

Our Sales Team is Here to Serve You!



Anne Long

National Sales & Outside the Pacific Northwest
503-871-7957
along@capitalpress.com



Jim Holt

NE Oregon, East Washington & North Idaho
509-413-7674
jholt@capitalpress.com



Pat McKenzie

South Willamette Valley, South Oregon, Central Oregon, & California
541-521-9008
pmckenzie@capitalpress.com



Patty Gilbert

NW Oregon & W Washington
503-308-2478
pgilbert@capitalpress.com



JoAnn Vanderwey

South Idaho, NE Nevada, & SE Oregon
208-880-4334
jvanderwey@capitalpress.com

800-882-6789 | View all classified ads for free at CapitalPress.com

Classified Index

Acreage.....	579	Farm, Yard, Estate Sales.....	351	Potato/Sugar Beet Equip.....	914
Alpacas & Llamas.....	743	Farms.....	564	Poultry & Fowl.....	722
Antique Farm Eq. & Parts.....	905	Feed, Grain.....	719	Public Notices.....	107
Antique/Classic Vehicles.....	201	Fencing.....	802	Rabbits.....	725
Antiques & Collectibles.....	813	Fertilizer & Soil Amendments.....	825	Ranches.....	561
Arts & Crafts.....	816	Fish.....	721	Ranchettes.....	558
ATVs/Motorcycles.....	219	Forklifts.....	896	Real Estate Auctions.....	534
Auction Sales.....	354	Fuel, Heating & Firewood.....	807	Real Estate Wanted.....	531
Automobiles.....	204	Garden, Turf, Yard Equip.....	908	Recreational Property.....	540
Bees.....	823	Generators.....	878	Refrigeration Equipment.....	863
Bison.....	761	Goats.....	746	Rentals, Leases.....	546
Boat Trailers.....	260	Hay Equip.....	911	Residential Property.....	549
Boat/RV Storage.....	269	Hay, Straw, Forage.....	716	Rock, Sand & Gravel.....	803
Boating Parts/Accessories.....	254	Heavy & Indust. Eq.....	899	RV Parts & Accessories.....	307
Boats for Sale.....	251	Help Wanted.....	651	RVs & Travel Trailers.....	301
Boats Wanted.....	257	Hemp.....	835	Sawmill Equip.....	894
Building Materials.....	804	Horses, Mules, Donkeys.....	731	Seed.....	824
Business-Sales Opportunities.....	643	Irrigation Equip.....	887	Services.....	664
Business for Sale.....	644	Lab Testing Services.....	665	Sheep.....	740
Campers & Canopies.....	310	Land.....	576	Shop Equip. & Tools.....	881
Cattle - Beef.....	758	Legal Notices.....	101	Sporting Goods/Hunting.....	819
Cattle - Dairy.....	755	Livestock Equip. & Supplies.....	869	SUVs.....	207
Christmas Trees.....	821	Loans & Financing.....	667	Swine.....	749
Coast Property.....	543	Logging Equip.....	893	Tanks & Storage.....	875
Commercial Property.....	525	Mini Ranchettes.....	555	Timber Property.....	573
Condos for Sale.....	510	Misc for Sale.....	828	Timber/Lumber.....	801
Crop Protection Products.....	827	Mixed Livestock Sales.....	752	Tires & Wheels.....	228
Dairy Eq. & Supplies.....	872	Mobile & Mfd. Home.....	537	Tractors.....	920
Dairy Farms.....	567	Nursery Equipment & Supplies.....	907	Trailers Misc.....	316
Dogs, Cats, Pets.....	728	Nursery Stock Plants.....	822	Trailers, Horse & Stock.....	319
Draft Horses & Equip.....	734	Obituaries.....	91	Truck/Auto Parts & Accessories.....	222
Emu, Ostrich, Rhea.....	744	Orchard & Vineyard Property.....	570	Trucks.....	210
Equestrian Property.....	552	Orchard/Vineyard Equip.....	917	Utility Trailers.....	313
Exotic Animals.....	737	Organic.....	826	Vacation Homes for Sale.....	513
Farm Buildings.....	805	Packing/Processing Eq.....	890	Vans.....	216
Farm Equip Parts.....	902	Pasture.....	582	Well-Drilling Equip.....	884
Farm Equipment.....	923	Pickups.....	211	Work Wanted.....	652

1-800-882-6789 | CapitalPress.com

102 Public Notices

Pursuant to ORS Chapter 819: Notice is hereby given that the following vehicle will be sold, for cash to the highest bidder, on 08/03/2022. The sale will be held at 10:00am by Wiltse Towing, LLC, 3120 Cherry Ave NE, Salem OR.
2016 Audi Q3 SUV Vin:WA1EFCFS1GR014200. Amount due on the lien: \$2,095.00 Reputed owners(s) Adeline Bodnariuk

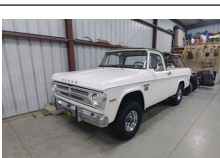
NOTICE OF PROPOSED RULEMAKING
ODA CHAPTER 623 OREGON HAZELNUT COMMISSION
Growers assessment rate reduction hearing
08/24/2022 - 9:00 - 9:15 AM
Public invited to join virtually. Visit: OregonHazelnuts.org/OHC for information and links

Pursuant to ORS Chapter 819: Notice is hereby given that the following vehicle will be sold, for cash to the highest bidder, on 08/16/2022. The sale will be held at 10:00am by Wiltse Towing, LLC, 3120 Cherry Ave NE, Salem OR. 2011 Kia Sorento SUV. VIV-5XYKU4A24BG021449. Amount due on lien: \$3,040.00. Reputed Owner(s): Jason Ferreira OneMain Financial Group LLC

201 Antique/Classic Vehicles

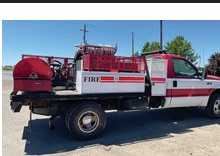


1965 Chevy Impala SS: 396 engine recently rebuilt, convertible, electric top, AC, stick shift on the floor, \$52,500. Yuba City, CA 530-682-5089



1971 Dodge Power Wagon W100, 4x4, 318 V8, 4 speed, 410 Posi gears, 1 owner, all original, excellent condition, \$35,000. SUTTER, CA 530-701-6933

210 Trucks



2000 IHC with Altec 53 articulating double bucket man lift with material handler. DT466 diesel. Allison Automatic. PS, AC, CC. New 22.5 radials. Certified. One owner truck from a State Agency that is in near new condition. It runs, drives, and operates like new. WORK READY, \$19,900. Located in Twin Falls ID. Call 208-613-0050



2001 Freightliner Classic with 20 yard dump bed with strong arm. Cummins Diesel with 325HP. 10 Speed. PS, AC, CC. Bed is Aluminum and you can't tell it from new. The entire truck is spotless. All tires are Super Single 425/65/22.5 on Alcoa wheels. They are 90%. 66,000 GVW. plus strong arm. Truck is in near new condition and is all original on the paint - NO RUST! 170,000 MILES. Runs, drives and operates like a new truck. Work ready, \$39,900. Located in Twin Falls ID. Call 208-613-0050

IF YOU HAVE A BEEF - sell it in next week's Capital Press!

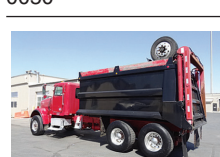
210 Trucks



2007 Freightliner tandem axle dump truck with 15-18 yard bed and STRONG ARM. MB450 HP Diesel. Eaton ULTRA-SHIFT 10 speed automatic transmission. PS, AC, CC, Jake brake, SIDE LOCK REARS, load tarp, trench gate, Tuf-Trac rear suspension 425/65/22.5 fronts with 11/ 22.5 rears on Alloy wheels. Very clean and well maintained truck from California that is work ready. \$39,000. Twin Falls, ID. Call 208-613-0050



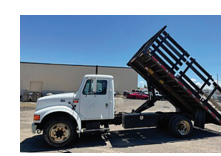
1980 Mack 6x6 tandem axle dump truck. 6 Cylinder Mack Diesel. 9 speed with Lo, Drive and Over-drive Auxiliary. 4x4 transfer. Near new 22.5 Radial tires. LOW MILES. Came from a large Municipal Airport and has been well maintained, is very clean. Runs, drives and operates well. Comes with a snowplow. Drive it anywhere. \$24,900. Located in Twin Falls ID. Call 208-613-0050



2007 IHC 4400 with 12K Lb. folding crane 25ft. reach and Hydraulic cable winch and outriggers. 15ft. flatbed with tool boxes and torch compartment and 3500lb. lift gate. DT466 Diesel with Fuller 10 speed transmission. Low Miles PS, AC, CC. 80% 22.5 radial tires. Spotlessly clean and well maintained truck from the California DOT. RUST FREE! Runs, drives and operates like new. WORK READY. \$25,900. Located in Twin Falls ID. Call 208-613-0050

1-800-882-6789 CapitalPress.com

210 Trucks



1997 IHC 4700 with 15 ft. stake bed with stake sides. T444E Powerstroke Diesel. Allison AUTOMATIC. PS, AC. 86,000 ACTUAL MILES. 24,000 GVW. Hydraulic Brakes. NO CDL! Very clean and well maintained truck from the California Dept. of Parks. Runs, drives, and operates like new. \$14,900. Located in Twin Falls ID. Call 208-613-0050



2000 IHC with Altec 53 articulating double bucket man lift with material handler. DT466 diesel. Allison Automatic. PS, AC, CC. New 22.5 radials. Certified. One owner truck from a State Agency that is in near new condition. It runs, drives, and operates like new. WORK READY, \$19,900. Located in Twin Falls ID. Call 208-613-0050



2001 Freightliner Classic with 20 yard dump bed with strong arm. Cummins Diesel with 325HP. 10 Speed. PS, AC, CC. Bed is Aluminum and you can't tell it from new. The entire truck is spotless. All tires are Super Single 425/65/22.5 on Alcoa wheels. They are 90%. 66,000 GVW. plus strong arm. Truck is in near new condition and is all original on the paint - NO RUST! 170,000 MILES. Runs, drives and operates like a new truck. Work ready, \$39,900. Located in Twin Falls ID. Call 208-613-0050

1-800-882-6789 CapitalPress.com

Your ad here! Call 800-882-6789

Newsday Crossword

- ACROSS**
- 1 Pulled-down window covering
 - 6 Advocate strongly
 - 10 Identical
 - 14 Plump chicken
 - 15 ___ and void (not valid)
 - 16 Pre-owned
 - 17 Emotionally distant
 - 18 What a prune once was
 - 19 Solemn ceremony
 - 20 "I approve"
 - 22 Four-door auto
 - 23 Noisy
 - 24 Beachgoers' linens
 - 25 Canine in a competition
 - 29 Per item
 - 30 Spanish bulls
 - 31 Area behind a house
 - 35 Lyft's ridesharing rival
 - 36 "Button-down" garment
 - 38 March Madness org.
 - 39 Group that discusses novels
 - 41 "Understood"
 - 42 Moccasin or sandal
 - 43 Standard procedure
 - 45 Nonconformist
 - 48 Manage somehow
 - 49 In first place
 - 50 "I approve"
 - 55 Point of a constellation
 - 56 A sight for sore ___
 - 57 Paprika or pepper

- DOWN**
- 1 Read, as a bar code
 - 2 Angelic light
 - 3 Per item, informally
 - 4 Cabinet's moving part
 - 5 Wraps around
 - 6 Disconnect from an outlet
 - 7 Made a judicial decision
 - 8 Feeling blue
 - 9 Stately shade tree
 - 10 "I approve"

- APPROVALS** by Billie Truitt
Edited by Stanley Newman
www.stanwords.com
- 11 "All kidding ___ . . ."
 - 12 Zinc or copper
 - 13 Blissful regions
 - 21 Greeting for a movie villain
 - 22 Argyle or ankle
 - 24 Diplomatic skill
 - 25 Theater ticket remnant
 - 26 Boxcar rider
 - 27 Triple-decker cookie
 - 28 "I approve"
 - 29 Organ to whisper into
 - 31 Baby's mealtime neckwear
 - 32 Play's first section
 - 33 Drought-ending weather
 - 34 Upper-right info on a check
 - 36 Piggy bank opening
 - 37 Any color
 - 40 Poker token
 - 41 Estimates that might be "wild"
 - 43 Cooks beef in an oven
 - 44 Choose, with "for"
 - 45 Unlike rolling stones, supposedly
 - 46 Bisected
 - 47 Walkway between floors
 - 48 Very inexpensive
 - 50 Keyboarding error
 - 51 Whitish gem
 - 52 Toy with a tail
 - 53 Scored 100% on
 - 54 Hankerings
 - 56 Top left PC key

1	2	3	4	5	6	7	8	9	10	11	12	13		
14						15				16				
17						18				19				
20						21				22				
						23				24				
25	26	27	28						29					
30									31		32	33	34	
35						36	37				38			
39											41			
						42				43	44			
45	46	47							48					
49									50		51	52	53	54
55									56					
58														60
61									62					63

CREATORS SYNDICATE © 2022 STANLEY NEWMAN STANWORDS@AOL.COM

Answers in classification 510



Capital Press
1-800-882-6789
CapitalPress.com

CLASS 8 TRUCKS

509-534-9088
JUST BOUGHT GROUP OF (14) DAY CABS. CALL NOW!!

- 2000 IH 4700 24' Bed, T444E, 7.3, 185 hp, Allison auto., 24' flatbed with liftgate, NON CDL.....CALL
- (3) Kenworth T800's, Cummins & CAT 550, 18 spds., lockers, good miles, big rears.....CALL
- (2) 2004 Volvo Day Cabs, D12, 365 hp, auto. trans., 23K rear, low miles, easy driving trucks.....\$24,900
- 2002 Peterbilt 6x6. CAT 10. 9LL, Hendrickson walking beam, full lockers 23' CEOF.....\$69,900

LOVELL TRUCK SALES

680 SW 1st Ave (Hwy 99 E) Conby, OR LovellTruck@conby.com
1-800-451-0012 (503) 266-5886

- 2017 International 4300 18' box Cummins 240hp, Allison auto, 216" wheelbase, ps, ac, cruise control, power windows and locks..... \$36,500
- 2017 Freightliner Columbia three axle day cab. DD13 435hp, Fuller 10 speed, 176" wb, engine brake, ps, ac, cruise control, air slide 5th wheel, 398k miles... \$73,500
- (2) 2015 Kenworth T-680 4-axle 40" sleeper Cummins ISX-485, fuller 10speed, aluminum wheels. dump valve, engine brake ps, ac, cruise control, power windows and locks. \$65,500
- 2005 Freightliner M2 26' curtain van Cat 210hp, fuller 6speed, 270" wb, ps, ac, cruise control, air ride, lift gate..... \$19,500
- 2015 Freightliner single axle daycab DD13, Fuller 10spd, 155"wb, aluminum wheels, ps, ac, cruise control, engine brake, air slide 5th wheel, dump valve, power windows and locks, 252k miles..... \$49,500

53rd ANNIVERSARY
LOVELLTRUCKSALES.COM