

923 Farm Equipment

Macdon M205, 1400 hours, draper ready with R85 rotary head, willing to split, \$79,000. OTHELLO, WA 509-488-6321



**NEW IA Hydraulic Box Scrapers with hydraulic tilt**  
 •LD 7ft. \$2,395  
 •LD 8ft. \$2,595  
 •LD 10ft. \$2,795  
 •LD 12ft. \$2,995  
 •HD 8ft. \$3,995  
 •HD 10ft. \$4,495  
 •HD 12ft. \$4,995  
 •HD 14ft. \$5,395  
**MTC Sales**  
 Bend, OR.  
 Scott: 541-815-2953  
**Visit:**  
[www.mtcsales.net](http://www.mtcsales.net)  
 \*\*\*\*Partner Dealers\*\*\*\*  
**Aleman Equipment**  
 Dutchess, Alberta, CAN.  
 Jerry: 403-793-7341  
**Equipment Finders**  
 Twin Falls, ID  
 Dave: 208-731-4040  
**Vista Equipment**  
 Hazen, NV.  
 Jerry: 775-741-0688



**NEW IA Heavy Duty Off-set Wheel Discs.** Scraper kit, EZ adjust gang angle, split gang axles, 26" notched blades front and rear.  
 •9ft. \$12,400  
 •10ft. \$12,900  
 •11ft. \$13,400  
 •12ft. \$13,900  
 •13ft. \$14,400  
 •14ft. \$17,900  
 •15ft. \$18,900  
 •16ft. \$19,900  
 •18ft. \$21,900  
 8ft.-22ft.  
 8,000 lbs.  
**MTC Sales**  
 Bend, OR.  
 Scott: 541-815-2953  
**Visit:**  
[www.mtcsales.net](http://www.mtcsales.net)  
 \*\*\*\*Partner Dealers\*\*\*\*  
**Aleman Equipment**  
 Dutchess, Alberta, CAN.  
 Jerry: 403-793-7341  
**Equipment Finders**  
 Twin Falls, ID  
 Dave: 208-731-4040  
**Vista Equipment**  
 Hazen, NV.  
 Jerry: 775-741-0688



**NEW IA Header Trailers.** Adjustable Bunk Mounts, 8 hole wheels and radial tires.  
 •20ft. \$5,495  
 •25ft. \$5,995  
 •30ft. \$6,495  
 •35ft. \$7,495  
 •40ft. \$7,995  
**MTC Sales**  
 Bend, OR.  
 Scott: 541-815-2953  
**Visit:**  
[www.mtcsales.net](http://www.mtcsales.net)  
 \*\*\*\*Partner Dealers\*\*\*\*  
**Aleman Equipment**  
 Dutchess, Alberta, CAN.  
 Jerry: 403-793-7341  
**Equipment Finders**  
 Twin Falls, ID  
 Dave: 208-731-4040  
**Vista Equipment**  
 Hazen, NV.  
 Jerry: 775-741-0688



**NEW IA Pasture Aerators:** Bolt on teeth. Heavy Duty Frame.  
 •8ft \$7,995  
 •10ft \$10,995  
 •12ft \$11,995  
 •27ft wing fold, \$32,900. Includes cement blocks.  
**MTC Sales**  
 Bend, OR.  
 Scott: 541-815-2953  
**Visit:**  
[www.mtcsales.net](http://www.mtcsales.net)  
 \*\*\*\*Partner Dealers\*\*\*\*  
**Aleman Equipment**  
 Dutchess, Alberta, CAN.  
 Jerry: 403-793-7341  
**Equipment Finders**  
 Twin Falls, ID  
 Dave: 208-731-4040  
**Vista Equipment**  
 Hazen, NV.  
 Jerry: 775-741-0688



**New IA Subsoilers**  
 26" Clearance  
 •3 Shank \$2,995  
 •5 Shank \$3,795  
 •7 Shank \$4,895  
 Gauge Wheel Set, Add \$995.  
**•HD Subsoilers with Dual Gauge Wheels.** Weight 4,500 to 5,500 lbs. 30" Clearance.  
 •7 Shank \$11,995  
 •9 Shank \$12,995  
 •11 Shank \$13,995  
**MTC Sales**  
 Bend, OR.  
 Scott: 541-815-2953  
**Visit:**  
[www.mtcsales.net](http://www.mtcsales.net)  
 \*\*\*\*Partner Dealers\*\*\*\*  
**Aleman Equipment**  
 Dutchess, Alberta, CAN.  
 Jerry: 403-793-7341  
**Equipment Finders**  
 Twin Falls, ID  
 Dave: 208-731-4040  
**Vista Equipment**  
 Hazen, NV.  
 Jerry: 775-741-0688

PLACE LINE CLASSIFIED ADS TOLL-FREE FROM ANYWHERE!  
 1-800-882-6789

923 Farm Equipment



**NEW IA Super Duty Off-set Wheel Discs.** EZ Adjust Gang Angle. 30" notched blades front and rear, adjustable scraper kit, 2" gang shafts, split gang shafts, high clearance. 9,000 to 12,000 lbs.  
 •12ft \$31,900  
 •14ft \$33,900  
 •16ft \$35,900  
 •21ft \$40,900  
 •10ft to 25ft  
**MTC Sales**  
 Bend, OR.  
 Scott: 541-815-2953  
**Visit:**  
[www.mtcsales.net](http://www.mtcsales.net)  
 \*\*\*\*Partner Dealers\*\*\*\*  
**Aleman Equipment**  
 Dutchess, Alberta, CAN.  
 Jerry: 403-793-7341  
**Equipment Finders**  
 Twin Falls, ID  
 Dave: 208-731-4040  
**Vista Equipment**  
 Hazen, NV.  
 Jerry: 775-741-0688



**NEW IA Rotary Mowers**  
 •6ft. 3 Point \$1,995  
 •7ft. 3 Point \$2,495  
 •10ft. 3 Point \$4,595  
 •12ft. 3 Point \$4,995  
**MTC Sales**  
 Bend, OR.  
 Scott: 541-815-2953  
**Visit:**  
[www.mtcsales.net](http://www.mtcsales.net)  
 \*\*\*\*Partner Dealers\*\*\*\*  
**Aleman Equipment**  
 Dutchess, Alberta, CAN.  
 Jerry: 403-793-7341  
**Equipment Finders**  
 Twin Falls, ID  
 Dave: 208-731-4040  
**Vista Equipment**  
 Hazen, NV.  
 Jerry: 775-741-0688

923 Farm Equipment

**Ask about our Rental/Purchase/Consignment Program.**  
 It includes 100 hrs of use per month. Free delivery to the Treasure Valley.

**This is a partial list. See our website for a complete list. www.ray-brothers.com**  
 2017 JD 6120R Auto Track Ready, 6,100 hrs.....\$69,500  
 2015 JD 6170M, good cond., 7700 hrs.....\$69,900  
 2015 JD 6130R TLS front axle suspension, 5,800 hrs...\$69,000  
 (2 Avail.)2013 JD 7200R, PQ, 20 spd., 4500 hrs.....\$95,000  
 2019 JD 7210R, e23 PS, 5500 hrs.....\$134,900  
 (3 Avail.)2018 JD 8245R, PT Warr., 5500 hrs.....\$149,000  
 2014 JD 6140M good tires, 16 sp. PQ, 6,552 hrs.....\$52,000  
 (2 Avail.)2019 JD L341 Large Square Baler, 18k & 22k Bales...\$109,000  
 2010 JD 9670 5TS Combine, nice small grain combine, 1,200 hrs...\$89,900  
 2014 JD 5680 Combine, duals, good tires, 2,100 hrs.....\$100,000  
 2013 JD 5680 Combine, duals, chopper, yield monitor, 1,850 hrs...\$169,000

**Ray Brothers Equipment**  
 (208) 880-6344 • Call or Text Chris  
**Ironside, OR • Financing Available!**  
 Email for more info  
[CHRISRAY@RAYBROTHERS.NET](mailto:CHRISRAY@RAYBROTHERS.NET)



• 1997 9600 John Deere Wheat Combine John Rea Leveler with 930 30" Grain Header with Cart - \$40,000  
 • 1994 John Deere Wheat 9600 Combine John Rea Leveler with 930 30" Grain Header with Cart - \$40,000  
 • 1992 John Deere 925F 25" Flex Header with Cart - \$5,000

**Excellent Condition, Serviced & Field Ready, Ag Leader Yield Monitors, Straw Choppers, Yearly Overhauls with Full Service Records.**

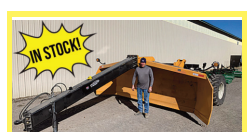
**Walla Walla Valley**  
**1-509-386-4876**



**Containers For Sale**  
 20' and 40'  
 REFRIGERATED CONTAINERS AVAILABLE  
**Portland Container**  
 9449 N. Burgard Way, Portland OR  
 Call John 503-286-5961 ext. 1320  
 or 1-800-788-5159  
[boxsales@pdxcontainer.com](mailto:boxsales@pdxcontainer.com)  
 (Credit Cards Accepted) 5282978-1

**CAPITAL PRESS LINE CLASSIFIEDS**  
**CALL TOLL-FREE: / OR ONLINE**  
**1-800-882-6789 / 24/7/365**  
**CapitalPress.com**

923 Farm Equipment



**NEW IA 16ft SHD wheel scrapers.** Move massive amounts of soil. Hydraulic tilt, \$26,900.  
**MTC Sales**  
 Bend, OR.  
 Scott: 541-815-2953  
**Visit:**  
[www.mtcsales.net](http://www.mtcsales.net)  
 \*\*\*\*Partner Dealers\*\*\*\*  
**Aleman Equipment**  
 Dutchess, Alberta, CAN.  
 Jerry: 403-793-7341  
**Equipment Finders**  
 Twin Falls, ID  
 Dave: 208-731-4040  
**Vista Equipment**  
 Hazen, NV.  
 Jerry: 775-741-0688



**NEW IA HD graders**  
 •10ft: \$10,595  
 •12ft: \$10,995  
 •14ft: \$11,995  
 •16ft: \$12,995  
 Angle-tilt-offset. Flip up ends.  
**MTC Sales**  
 Bend, OR.  
 Scott: 541-815-2953  
**Visit:**  
[www.mtcsales.net](http://www.mtcsales.net)  
 \*\*\*\*Partner Dealers\*\*\*\*  
**Aleman Equipment**  
 Dutchess, Alberta, CAN.  
 Jerry: 403-793-7341  
**Equipment Finders**  
 Twin Falls, ID  
 Dave: 208-731-4040  
**Vista Equipment**  
 Hazen, NV.  
 Jerry: 775-741-0688

440 John Deere skidder with turbo good tires great chains on the front tires New winch line with 4 sliders \$17,900 Randy Rogers 503-314-0145

**Capital Press CLASSIFIEDS**  
**1-800-882-6789**  
**CapitalPress.com**



**Farmland Tractor Supply**  
 Tangent, Oregon  
**New, Used, and Rebuilt Tractor Parts**  
**877-928-1646**  
 541-928-1646  
 32427 Old Hwy. 34  
 Tangent, OR 97389

923 Farm Equipment



**MASSEY FERGUSON**



**TESTED ON FOUR CONTINENTS. NOW AVAILABLE IN YOUR ZIP CODE.**

Fuel your future. The new Massey Ferguson® 8S Series tractor can work faster with the most demanding implements. And the exclusive Massey Ferguson Protect-U design gives operators better visibility, comfort and efficiency for incredible performance.

**AGRI-SERVICE**  
 Together, we drive agriculture FORWARD

**Contact us for a quote.**  
 Blackfoot, ID • Burley, ID • Fruitland, ID • Marsing, ID  
 Twin Falls, ID • Sugar City, ID • Moses Lake, WA • Pasco, WA  
[www.Agri-Service.com](http://www.Agri-Service.com) • 208-215-7040

**AGCO**  
 Your Agriculture Company  
 ©2022 AGCO Corporation. Massey Ferguson is a worldwide brand of AGCO Corporation. AGCO and Massey Ferguson are trademarks of AGCO. All rights reserved.

**CLASSIFIED ADS SELL! Advertise Today!**  
**1-800-882-6789 • CapitalPress.com**

**GK Machine is your local Ag equipment supplier!**



Call for a friendly quote! 503-678-5525  
 10590 Donald Road NE • Donald, Oregon 97020 [WWW.GKMACHINE.COM](http://WWW.GKMACHINE.COM)

**NORTON'S WELDING**  
**866-628-2497**  
**541-569-2436 • 541-398-2900**  
**Lostine, OR • www.nortonwelding.com**

**TRACTORS**

Branson 5835R, 2-remotes, w/ BL350 loader.....CALL  
 Branson 4820H w/ BL200 loader, 2-remotes and 3rd function valve.....CALL  
 (2) Branson 3620H w/ BL200 loader, bolt-on cutting edge.....CALL

**HAY EQUIPMENT**

USS 39" 2 Spear Bale Fork.....\$575  
 USS 49" 2 Spear Bale Fork.....\$595

**FARM EQUIPMENT**

Harrow Draw Bar 4-12 Foot.....CALL  
 Hesston 4650 Center Line Baler.....CALL  
 2003 Hesston 956A Round Baler.....\$13,500  
 3Pt 4x6 Ft 5/8" Harrow with carrier.....\$550  
 Various Sizes 1/2" Harrow.....CALL  
 Used 9 1/2 ft. wide Land Plane on Rubber.....\$1,500

**CONSTRUCTION EQUIP.**

Bobcat E35i w/ 34" clean out bucket, 1400 hrs.....\$58,300  
 Kubota KX41-3V w/ 23" clean out bucket and a 15" toothed bucket, adjustable width track frames, 1272 hrs.....\$28,300

**MISC**

Hillsboro Gil long box flatbeds...\$4,973 ea.  
 Parshall Flume, 3' inlet, rebuilt 2 years ago.....\$2,000  
 Loftness 60" Skid Steer Mount or (USS) Mount Hydraulic Snow Blower \$5,500  
 1983 International Van Truck, 9UR\$4,000  
 Back Blade 3pt, 7'.....\$380  
 Back Blade 3pt General Implement, 7'.....\$720  
 Agri-Ease 5 Ft Back Blade.....\$450  
 Agri-Ease 6 Ft Angle/Tilt HD Back Blade.....\$650  
 Agri-Ease 6' Box Scraper with rippers.....\$775.00  
 General 7' 3pt. Back Blade.....\$650

B&E 7 Ft USS Snow Blade w/out hyd. kit.....\$1,650  
 B&E 7 Ft USS Snow Blade w/hyd. angle kit.....\$1,900  
 General 72" USS Snow Blade w/out hyd. kit.....\$2,100  
 General 60" USS Snow Blade w/out hyd. kit.....\$1,995  
 General Hyd. Kit for snow blades.....\$295  
 J&I Dually Flatbeds, New.....\$2,400  
 Used RTC 70 Rototiller.....\$1,995  
 5 Ft Rotary Mowers.....\$1,195  
 4 Ft Rotary Mower.....\$1,250  
 Quick Mount Skid Steer Plates (2).....\$165  
 Braber Equipment 6FT Rotary Mower.....\$1,765  
 Braber Equipment 5FT Rotary Mower.....\$1,555  
 Braber Equipment 4FT Rotary Mower.....\$1,350  
 Braber Equipment Pull Behind 35 ton Log Splitter.....\$2050  
 Braber Equipment 48" USS Pallet Forks.....\$850  
 Braber Equipment 42" USS Pallet Forks.....\$750  
 Braber Equipment 3pt 22 Ton Log Splitter.....\$1,575  
 74" Clamshell Bucket w/USS mount.....\$2,495  
 Used 12" Auger w/gearhead 3pt attachment.....\$995  
 General 66" Front Bucket Shell.....\$565  
 General 72" Front Bucket Shell\$1,025  
 New 18" Backhoe Bucket.....\$450  
 Used Case 12" Backhoe Bucket.....\$750  
 9" Auger Bit.....\$250  
 3pt Cherry Picker.....\$225  
 Pull Type on Rubber Mount V Ditcher.....\$750



**FISCHER MILL SUPPLY, INC.**  
 EST. 1889

**NEW HAY EQUIPMENT**

- 21 Massey 1359 9'3" Disc Mower Conditioner
- Farm King 2-Basket Tedder PTO (Drawbar Pull)
- Fransgard RV-300 3pt Tedder/Rake - \$5,250.00
- Sitrex SU-400 3pt Rotary Tedder/Rake - \$10,500.00
- H&S 20' Feeder on Rubber - \$6,900.00
- WOODS Bale Spears (Skid Steer Q/A) - Round Bale \$815.00,
- Double Spear (44") \$985.00, Triple w/ Uprights (32") \$1,095.00
- Massey DM255 5 Disc Mower 8'4" Cut.....Call
- Massey DM164 4 Disc Mower 5'5" Cut.....Call
- Massey TD252 2 Basket Tedder (Drawbar).....Call
- Fransgard RV-390 3 pt Tedder/Rake.....Call

**USED EQUIPMENT**

- NH TS100 2wd Cab Tractor w/ Loader.....\$30,000
- New Holland 258 Side Delivery Rake Ground Driven - \$2,450.00
- JI Case Side Delivery Rake - \$2,950.00
- Kuhn GSR24 3pt Tedder/Rake - \$3,250.00
- Rears PakFlail Mower 8', FL960's.....\$7,500
- Kverneland kD807 Bale Processor.....\$7,000

**GET YOUR HAY EQUIPMENT READY NOW!**

**SPEND \$50 OR MORE IN PARTS & GET A FREE FMS HAT!**



**503-631-3411 www.FISCHERMILLSUPPLY.COM**

**LANDOLL • WIL-RICH • SUMMERS**

**NEW & USED EQUIPMENT**

**Doerfler Tractor SALES COMPANY**

12333 Silver Falls Highway SE Phone: (503) 769-2205  
 Aumsville, OR 97325 Fax: (503) 769-9450