

210 Trucks



2020 Dodge Ram 3500, Fully Loaded Laramie, Automatic, 72,000 Miles, Bradford Flatbed, Stock Wheels, Goose Neck, Tool Boxes, Asking \$72,500. Call Pepe: 503-544-3232; Call Pat: 503-407-9062 Sandy, OR. (503)668-5024



2007 IHC 4400 with 12K. Lb. folding crane 25ft. reach and Hydraulic cable winch and outriggers. 15ft. flatbed with tool boxes and torch compartment and 3500lb. lift gate. DT466 Diesel with Fuller 10 speed transmission. Low Miles PS, AC, CC. 80% 22.5 radial tires. Spotlessly clean and well maintained truck from the California DOT. RUST FREE! Runs, drives and operates like new. WORK READY. \$25,900. Located in Twin Falls ID. Call 208-613-0050

A picture is worth a 1,000 words



Add a full color photo to your print and online ad.

Capital Press  
800-882-6789  
CapitalPress.com

210 Trucks



2007 IHC 4400 with 12K. Lb. folding crane 25ft. reach and Hydraulic cable winch and outriggers. 15ft. flatbed with tool boxes and torch compartment and 3500lb. lift gate. DT466 Diesel with Fuller 10 speed transmission. Low Miles PS, AC, CC. 80% 22.5 radial tires. Spotlessly clean and well maintained truck from the California DOT. RUST FREE! Runs, drives and operates like new. WORK READY. \$25,900. Located in Twin Falls ID. Call 208-613-0050



2004 International 4300 Service truck, DT 466, Automatic, NON-CDL, Autocrane 6406, Tool Boxes, Asking \$32,000. Sandy, OR. Call Pepe: 503-544-3232; Call Pat: 503-407-9062

210 Trucks



1986 IHC 2564 S/A dump truck. 8 yard bed. Cummins L10 Diesel. Fuller 13 speed transmission. PS, AC, Jake brake. 33K. GVW. Plumbed for trailer. Near new 11/22.5 radial tires. 200K ACTUAL MILES. Extremely clean and well maintained former State DOT truck that is work ready. \$18,900. Located in Twin Falls ID. Call 208-613-0050



1993 Spartan Firetruck. 8.3 Cummins Diesel. Allison AT. PS, AC. 750 gallon tank. Suction draft and spray. 2'3" and 150 Foot. 1" hose and electric rewind reel with nozzles. Brand new radial 22.5 tires. 80K ACTUAL MILES. Like brand new truck from the Cal. Dept. of General Services. \$13,900. Located in Twin Falls ID. Call 208-613-0050

CAPITAL PRESS CLASSIFIEDS GET RESULTS!

210 Trucks



1984 IHC 2564 Tandem axle dump truck with 15 foot 15-18 Yard bed. Cummins NTC300 Diesel. Allison HT750 Automatic Transmission. PS, AC. Hendrickson rear suspension. 50% radial tires. 53,000 ACTUAL MILES, 2200 hours. Truck is very clean and runs and drives and operates well. NO ISSUES and NO RUST! Everything works correctly. One owner from a Large City Airport. \$24,900. Located in Twin Falls, ID. Call 208-613-0050.



2002 IHC 4900 with 53 foot Altec manlift with 1300 LB. material handler crane. Has remote control and a Hydraulic GENSET. DT466 Diesel. Allison 6 speed Allison Transmission. PS, AC, CC, engine brake. 49,000 ACTUAL MILES and 4400 HOURS. RUST FREE! 90% 11/22.5 radials. Well maintained former California DOT truck that runs drives and operates like new and it is as clean as a new truck. \$29,000. Located in Twin Falls ID. Call 208-613-0050

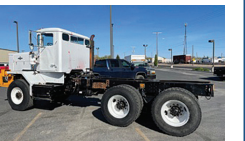
210 Trucks



1997 Ford 2000 gallon water truck. 8.3 Cummins motor, Allison transmission, AC, 2 fronts, 2 rears, 1 side spray. Like new condition, \$28,500 OBO. Atwater, CA. 209-604-1342



2004 IHC 7400 Digger Derrick with Altec D3050 TR derrick. 50ft. reach. 30,000Lbs. lift. 4 outriggers. 2 tool circuits, Upper and lower controls. 20,000LB. front winch with Capstan. Near new 11/22.5 radials. DT530 Diesel with Allison Automatic trans. PS, AC, CC. Side lock rear differentials. 98,000 ACTUAL MILES. One owner truck from a large Electrical Utility. Everything on the truck works properly. Clean, well maintained and work ready, \$29,900. Located in Twin Falls ID. Call 208-613-0050



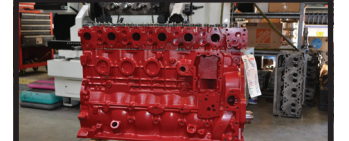
1980 OSHKOSH 6x6 tandem axle cab and chassis. 20,000 ACTUAL MILES. 2000 HOURS. NTC290 Cummins Diesel. Fuller 9 speed with 3 speed auxiliary. PS, AC. 11/22.5 rears, 385/65/22.5 fronts. All are 90% of new. Spotlessly clean and well maintained all wheel drive that is in near new condition. It runs, drives and operates like new, \$23,900. Located in Twin Falls ID. Call 208-613-0050

210 Trucks

**R & G MACHINING AND ENGINE PARTS**  
COMPLETE DIESEL MACHINE SHOP AND TRUCK REPAIR  
MULINO, OREGON • SHOP: 503-829-6038 • NATIONWIDE: 1-800-823-6038  
We Absolutely, Positively Have The Best Remanufactured Engines Available Anywhere!  
Huge Inventory • Expert Technical Assistance

- 1) Exchange crankshafts
- 2) We Grind and Repair crankshafts and camshafts
- 3) Exchange cylinder heads
- 4) Exchange connecting rods
- 5) Cylinder head and block o-ringing
- 6) We sleeve and Repair Engine Blocks
- 7) Line boring & line honing
- 8) Engine Balancing
- 9) Huge Inventory of Diesel and Gas Engine Parts

We Rebuild: Turbos, Injectors, High Pressure Oil Pumps, Fuel Injection Pumps, Oil Coolers, Computers - Ford, GM, Dodge



**CUMMINS 5.9 MAGNUM**  
\$5,995 AND CORE \$3,850

**IN BUSINESS SINCE 1975.**

**OVER 250 ENGINES & 450 CYLINDER HEADS IN STOCK!**  
We have a complete line of import diesels and obsolete diesels for your mini excavators or skidsteers.

**NEED ENGINE PARTS, GAS OR DIESEL - CHECK IT OUT:**  
WWW.EBAY.COM/STR/GRUMPYSPERFORMANCECENTER  
GRUMPYSPERFORMANCE@GMAIL.COM

REBUILT DIESEL L/B ENGINES	
CUMMINS	PERKINS & ISUZU
3.9-4BT.....\$4,650	Starting at.....\$5,995
5.9 '88-'02.....\$4,850	MITSUBISHI & NISSAN
5.9 '03 & up.....\$5,150	Starting at.....\$5,995
6.7 C/R.....\$5,450	YANMAR & KUBOTA
	Starting at.....\$4,995
6.0 P/S.....\$5,845	BOBCAT & SHIBAURA
6.4 P/S.....\$6,545	Starting at.....\$3,995
6.7 P/S.....\$7,650	DOOSAN & TAKEUCHI
6.9-7.3 IDI.....\$5,150	Starting at.....\$5,995
7.3 P/S.....\$5,150	
	GM
6.6 Duramax.....\$6,550	DEUTZ
6.2-6.5.....\$4,895	Starting at.....\$9,995
	JOHN DEERE & IH
	Starting at.....\$5,995
	KOBELCO, KOMATSU, HITACHI
	Starting at.....\$5,995
	CATERPILLAR & HYUNDAI
	Starting at.....\$5,995

**THIS MONTH'S SPECIALS**  
Rebuilt & Balanced Injectors  
Hi Flow Turbos  
Rebuilt Injection Pumps  
FORD - GM - DODGE

Call on other gas or diesel engines. We are a major rebuilder on all diesel brands. All work done in house!

**WANTED**  
Cummins 6.7 and 5.9 - Engine Cores  
R&G Machining 503-829-6038

# WE COVER A LOT OF GROUND!

Let us deliver your message to the West's Ag Audience, wherever they are.

- Newspaper
- E-Editions
- Mobile
- Websites
- Flyers
- Custom Publications

Call us today to see how we can help your business grow.

**Capital Press**  
EMPOWERING PRODUCERS OF FOOD & FIBER  
**800-882-6789**  
CapitalPress.com



**Buying or Selling**  
Capital Press is here to help you!  
1-800-882-6789  
or FAX 503-370-4383  
CapitalPress.com

**The West's BEST Ag News!**  
• newspaper  
• e-paper  
• facebook  
• twitter  
• web  
CapitalPress.com

## CLASS 8 TRUCKS 509-534-9088



2000 IH 4700 Flat Bed T444E, 73, 185 hp, Allison Auto 24' Flat bed with liftgate, NON CDL .....CALL



(2) 2004 Volvo Day Cabs, D12, 365 hp, auto. trans., 23K rear, low miles, easy driving trucks.....\$24,900



2004 Volvo Day Cab Volvo D12, 365 hp, Automatic, AC, Low miles.....CALL



2002 Peterbilt 6x6. CAT C10. 9LL, Hendrickson walking beam, full lockers 23' CEOF .....\$69,900



2000 IH 4700 flatbed, T444E diesel, Allison auto., 16' steel flatbed, non CD.....\$26,900



2009 ProStar Day Cab Cummins ISX, 450 hp, 13spd, 90% virgin tires, Low miles 250k.....\$59,900

### LOVELL Truck Sales

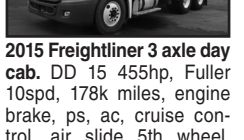
680 SW 1st Ave (Hwy 99 E) Canby, OR LovellTruck@canby.com  
1-800-451-0012 | (503) 266-5886



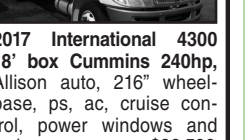
2017 Freightliner Columbia three axle day cab. DD13 435hp, Fuller 10 speed, 176" wb, engine brake, ps, ac, cruise control, air slide 5th wheel, 398k miles... \$73,500



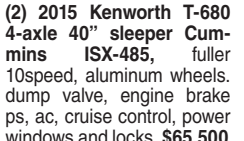
2005 Freightliner M2 26' curtain van Cat 210hp, fuller 6speed, 270" wb, ps, ac, cruise control, air ride, lift gate.....\$19,500



2015 Freightliner 3 axle day cab. DD 15 455hp, Fuller 10spd, 178k miles, engine brake, ps, ac, cruise control, air slide 5th wheel, dump valve..... \$59,500



2017 International 4300 18' box Cummins 240hp, Allison auto, 216" wheelbase, ps, ac, cruise control, power windows and locks.....\$36,500



(2) 2015 Kenworth T-680 4-axle 40" sleeper Cummins ISX-485, fuller 10speed, aluminum wheels, dump valve, engine brake ps, ac, cruise control, power windows and locks. \$65,500



2004 International 4300 24' box DT-466, 6 speed, ps, ac, cruise control, 24' box with lift gate.....\$19,500



2013 Isuzu NRR flatbed 210 diesel automatic transmission, ps, ac, cruise control power windows and locks, 16' flatbed..... \$26,500

## Don't Miss Another Issue of Capital Press!

The latest agricultural and natural resources news. ANYTIME. ANYWHERE.

- 1 year \$65
- 2 years \$115
- EZ Pay
- Digital \$4/month
- Digital + Print \$5/month

**Capital Press**  
EMPOWERING PRODUCERS OF FOOD & FIBER  
1-800-781-3214  
CapitalPress.com

**SUBURBAN CHEVROLET**  
36936 Hwy. 26  
Sandy, OR 97055

FIND NEW ROADS<sup>SM</sup> CHEVROLET

**NEW 2022 CHEVY 4500 LCF**  
Diesel 12ft Stake Body  
16,000lb GVWR  
Stock #T220520  
MSRP \$79,960  
**\$75,460**  
AFTER REBATE

**New 2022 Chevy 5500 HD Low Cab**  
Forward 18ft box with 2,500lb lift gate  
Stock #T220121  
PRICE REDUCED  
**\$88,569**  
AFTER REBATE

**New 2022 Chevy 3500**  
2x4 Chassis 12ft Landscape Dump Body  
Stock #T220447  
MSRP \$66,187.00  
AFTER REBATE  
**\$62,337**

**CHEVROLET BUSINESS ELITE**  
**(503) 668-5555**  
fax: (503) 668-4359  
www.suburbanchevrolet.com