

911 Hay Equipment

#1 Balewagons: Buy, Sell, New Holland 2&3 wide self-propelled, pull-type models, parts, tires, manuals. Caldwell, ID. 208-880-2889 www.balewagon.com

Hesston 4655 Inline Baler: Lightly used, well maintained stored under cover year round, \$17,500. Hood River, OR. Contact Larry 541-354-9963



B28 Balewagon currently set up with 3x4 Mil-Stak bale squeeze. Upgrades, well cared for. Never used in custom operations. Attachments to convert back to small bale configuration included. 4495 hours. \$100,000. Moses Lake, WA. 509-750-6337

Frontier Hay Rake WR5417-2013: only used for 900 acres, \$28,000 OBO. Othello, WA. 509-488-6321



2011 New Holland BC5070 square baler with extra wide pick up. Stored inside and in great condition. \$16,000. Cowiche, WA. 509-945-0159



1960s model tow motor hay squeeze, runs good, brakes need work, hydraulics good, \$15,000. Klamath Falls, OR (541)891-6585



Massey Ferguson Baler 2270XD: 37,700 bales, field ready, excellent condition, barn stored, \$85,000. Lebanon, OR 707-249-6175

HAY EQUIPMENT: Hay Squeeze/ dozer 4x4 combo, diesel, on tires, \$18,500. Deutz Tedder, \$1,400. Ford Rollover Plow, \$2,800. John Deere Land plane, \$3,700. Small Ripper, 10 foot John Deere off set disc. 16 foot disc on tires. Packer. Klamath Falls, Oregon. John 541-892-1948

Freeman 370 Baler: Like new, 27,000 bales, recent \$8,000 overhaul, new paint, hydro. \$20,000 OBO. Junction City, OR. 541-998-2429

PLACE LINE CLASSIFIED ADS TOLL-FREE FROM ANYWHERE! 1-800-882-6789

RCO Baits Gophers • Squirrels Voles • Moles Dealer Locator 1-800-214-2248 Harrisburg, OR 5272464-1

917 Orchard/Vineyard Equipment



2018 Deutz Fahr Agro-Farm 420TB: 480 hours, excellent condition, low profile cab, 4x4, AC, \$68,000. Woodburn, OR (971)219-5175



2 Littau Harvesters for Sale. 2006-25 and 2006-26 over the row. Well maintained; Serious Inquiries Only. No Trade or financing. One has 6900 and the other 7200 hours. 2006-25: \$80,000 (New catch plates, new skins, and new conveyors.) 2006-26: \$75,000. Mount Angel, OR. 503-209-3715



2018 John Deere 5100GN: orchard cab, 3000 hours, warranty to 4000 hours, \$42,000. Albany, OR. 503-510-7779



Orchard sprayer Isuzu minitruck 4x4 with raven 330 controller, 3 boom manifolds, flow meter, centrifugal pump, 150 gallon tank, hydraulic folding booms, fully automated, \$17,000. Dayton, OR. 503-437-4833

917 Orchard/Vineyard Equipment



WANTED: Flory or Rears Engine Driven Shredder. Call 209-996-2488

920 Tractors



1070 Case Tractor: for parts, has good engine and tires, \$5,000. BONANZA, OR 541-545-6003



2009 John Deere 5603: 617 hours. Mint condition, \$45,500 OBO. Toledo, WA. Call 360-480-2291, email: rick@rivercreekfarm.com



1466 IH 150HP Tractor: 2 wheel drive, Leon loader, grapple, duals, 6 remotes, 5873 hours, overhaul about 1200 hours ago, \$23,500. Long Creek, OR. 541-421-5300, 541-620-0410

1999 Cat Challenger Tractor, \$16,000. Echo, OR. Call Tom 509-537-7210



John Deere 7320, 2004 IVT, 125HP, 5725 hours, premium cab, clean. \$45,000. Ellensburg, WA. 509-201-0775



Retiring and selling our like new 2017 Kubota M6 131 with 760 hours. \$77,500. Newman Lake, WA. 509-570-2373

2000 Cat Challenger 55, in nice condition. Good 30 inch Tracks and undercarriage. 4 remotes, PTO, 3 point, auto steer, 11,500 hours, \$42,000. Silverton, OR. 503-991-1495



2012 John Deere 8254R: New front tires, 70% rear tires, Auto steer ready. Well maintained, 3920 hours, \$185,000. McArthur, CA. 661-886-3897



Ford 950 Powermaster row crop style 5 speed tractor. Runs good. With John Deere 503 mower, 45HP. Restorable, \$2600. SWEET-HOME, OR (541)521-1313



Challenger 645D Tractor: 3000 hours, suspension, plus cab suspension, 250HP, excellent condition, \$105,000. Lebanon, OR 707-249-6175



Massey Ferguson 7615 Tractor: 3000 hours, excellent condition, \$90,000. Lebanon, OR 707-249-6175



2019 Kubota M6-141 DTC, 4WD, 141HP, 588 hours, \$64,900. Lebanon, OR. 541-905-3850



WANTED: Massey Ferguson Tractor Model 245. Working Condition. 253-833-7707 or Call/ Text 253-350-2459, 253-350-9158

920 Tractors



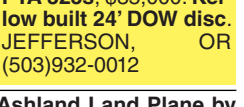
2012 Case Magnum 180 Tractor: 1200 hours, duals, suspension cab, GPS and auto steer, front and rear weights, 480 tires. Really Nice Tractor, \$100,000 OBO Sheridan, OR. 971-600-6106



190 New Holland Manure Spreader: good shape, \$11,500. BONANZA, OR 541-545-6003

John Deere 444H Loader, \$45,000. John Deere 8350 drill 18" rows, set up for charcoal, \$7000. (2) 820 John Deere Drills, 20ft wide, 3 point, \$3000 each. DMI Perfecta, 25; \$2500. (2) Rears MFG. propane burners, 30ft. John Deere 8850 Tractor: Excellent condition. \$45,000. 7800 John Deere Tractor, needs hydraulic work, \$25,000. 6030 John Deere Tractor, restored. Alloway Flail, 30'. Just rebuilt. Killbros Auger Wagon, Model 1820, excellent condition. 32' Wil-Rich chisel plow. 24' heavy harrow, 29' heavy harrow with Brillion sprocket roller. Hurd's Fertilizer buggy, \$20,000. Steiger PTA 325s, \$35,000. Kellow built 24' DOW disc. JEFFERSON, OR (503)932-0012

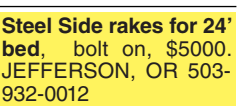
Ashland Land Plane by Wisconsin. 14' wide, Model L-12, Serial Number 13185. Very Good Condition, \$13,000. Buhl, ID 208-308-1950



2014 Calumet Liquid Manure Spreader: excellent condition, 3750 gallon, tandem axle, 6" suction hose, knifing, \$29,500. Jefferson, OR. 503-269-0672, jamesposch@sbcglobal.net



Steel Side rakes for 24' bed, bolt on, \$5000. JEFFERSON, OR 503-932-0012



3 shank Big Ed ripper, \$500. Harrell 6 bottom switch plow, \$3000. Hydraulic wheel line mover, \$500. Miskin 7 yard scraper, \$6000. Christmas Valley, OR 541-419-1190



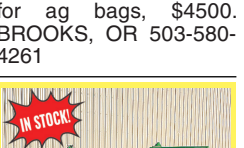
Wanted: Kuhn Manure Spreader Model 1212, good condition. Reasonable Price. 541-259-1435; 541-405-8474



12' Eversman 3 point land plane. Good tires, no cracks, \$4500. Brooks, OR. 503-580-4261



6ft x 10ft double hopper for ag bags, \$4500. BROOKS, OR 503-580-4261



New IA Switch Plows •3 Bottom \$9,995 •4 Bottom \$10,995 •5 Bottom \$12,995 •6 Bottom \$19,995 •7 Bottom \$21,995 Poly Wear Armor HD Components Trip Bottoms MTC Sales Bend, OR. Scott: 541-815-2953 Visit: www.mtcsales.net

Aleman Equipment Dutchess, Alberta, CAN. Jerry: 403-793-7341 Equipment Finders Twin Falls, ID Dave: 208-731-4040 Vista Equipment Hazen, NV. Jerry: 775-741-0688



2019 Kubota M6-141 DTC, 4WD, 141HP, 588 hours, \$64,900. Lebanon, OR. 541-905-3850

WANTED: Massey Ferguson Tractor Model 245. Working Condition. 253-833-7707 or Call/ Text 253-350-2459, 253-350-9158

HOT! SAVINGS at Capital Press 1-800-882-6789 CapitalPress.com

923 Farm Equipment



Portable Toilet Trailers GGAP Compliant Single or Double Trailers B and L Fabrication, LLC 503-308-1870 www.BNL.FAB.com Salem, OR.



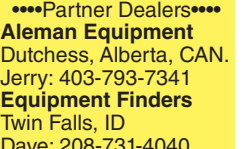
NEW IA Tandem and Offset Wheel Discs. •7ft \$6,995 •8ft \$7,395 •9ft \$7,795 •10ft \$8,195 •11ft \$8,495 •12ft \$8,795 •13ft \$8,995 MTC Sales Bend, OR. Scott: 541-815-2953 Visit: www.mtcsales.net

Aleman Equipment Dutchess, Alberta, CAN. Jerry: 403-793-7341 Equipment Finders Twin Falls, ID Dave: 208-731-4040 Vista Equipment Hazen, NV. Jerry: 775-741-0688

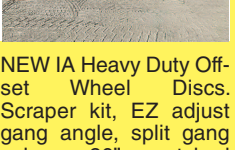


NEW IA Hydraulic Box Scrapers with hydraulic tilt •LD 7ft. \$2,395 •LD 8ft. \$2,595 •LD 10ft. \$2,795 •LD 12ft. \$2,995 •HD 8ft. \$3,995 •HD 10ft. \$4,495 •HD 12ft. \$4,995 •HD 14ft. \$5,395 MTC Sales Bend, OR. Scott: 541-815-2953 Visit: www.mtcsales.net

Aleman Equipment Dutchess, Alberta, CAN. Jerry: 403-793-7341 Equipment Finders Twin Falls, ID Dave: 208-731-4040 Vista Equipment Hazen, NV. Jerry: 775-741-0688



NEW IA Super Duty Off-set Wheel Discs. EZ Adjust Gang Angle. 30" notched blades front and rear, adjustable scraper kit, 2" gang shafts, split gang shafts, high clearance. 9,000 to 12,000 lbs. •12ft \$31,900 •14ft \$33,900 •16ft \$35,900 •21ft \$40,900 •10ft to 25ft MTC Sales Bend, OR. Scott: 541-815-2953 Visit: www.mtcsales.net



Aleman Equipment Dutchess, Alberta, CAN. Jerry: 403-793-7341 Equipment Finders Twin Falls, ID Dave: 208-731-4040 Vista Equipment Hazen, NV. Jerry: 775-741-0688



Wanted: Kuhn Manure Spreader Model 1212, good condition. Reasonable Price. 541-259-1435; 541-405-8474



6ft x 10ft double hopper for ag bags, \$4500. BROOKS, OR 503-580-4261



Authorized Dealer of PIK RITE SPREADERS. 509-590-0437 • www.Barr-Tech.net • Sprague, WA

Hillside Combines

• 1997 9600 John Deere Wheat Combine John Rea Leveler with 930 30' Grain Header with Cart - \$40,000 • 1994 John Deere Wheat 9600 Combine John Rea Leveler with 930 30' Grain Header with Cart - \$40,000 • 1992 John Deere 925F 25' Flex Header with Cart - \$5,000

Excellent Condition, Serviced & Field Ready, Ag Leader Yield Monitors, Straw Choppers, Yearly Overhauls with Full Service Records.

Walla Walla Valley 1-509-386-4876

923 Farm Equipment

Huge Moving Sale! IH 1470 Hillside Combine, (2) McDon Windrowers, Cadman 3750 sprinkler, Monsen 3 row pumpkin planter, (2) Front end loaders, New Holland 595 3x4 baler, Bale wagons, spray coupe, balers, hay rakes, plows, discs. Hundreds of items. Make Offer. Rickreall, OR 503-838-3740; 503-383-6722

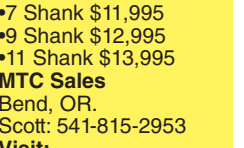


NEW IA Header Trailers. Adjustable Bunk Mounts, 8 hole wheels and radial tires. •20ft \$5,495 •25ft. \$5,995 •30ft. \$6,495 •35ft. \$7,495 •40ft. \$7,995 MTC Sales Bend, OR. Scott: 541-815-2953 Visit: www.mtcsales.net

Aleman Equipment Dutchess, Alberta, CAN. Jerry: 403-793-7341 Equipment Finders Twin Falls, ID Dave: 208-731-4040 Vista Equipment Hazen, NV. Jerry: 775-741-0688



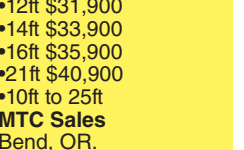
NEW IA Rotary Mowers •6ft. 3 Point \$1,995 •7ft. 3 Point \$2,495 •10ft. 3 Point \$4,595 •12ft. 3 Point \$4,995 MTC Sales Bend, OR. Scott: 541-815-2953 Visit: www.mtcsales.net



Aleman Equipment Dutchess, Alberta, CAN. Jerry: 403-793-7341 Equipment Finders Twin Falls, ID Dave: 208-731-4040 Vista Equipment Hazen, NV. Jerry: 775-741-0688



NEW IA 16ft SHD wheel scrapers. Move massive amounts of soil. Hydraulic tilt, \$26,900. MTC Sales Bend, OR. Scott: 541-815-2953 Visit: www.mtcsales.net



Aleman Equipment Dutchess, Alberta, CAN. Jerry: 403-793-7341 Equipment Finders Twin Falls, ID Dave: 208-731-4040 Vista Equipment Hazen, NV. Jerry: 775-741-0688



NEW IA HD graders •10ft: \$10,595 •12ft: \$10,995 •14ft: \$11,995 •16ft: \$12,995 Angle-tilt-offset. Flip up ends. MTC Sales Bend, OR. Scott: 541-815-2953 Visit: www.mtcsales.net

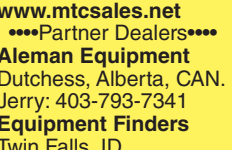


Aleman Equipment Dutchess, Alberta, CAN. Jerry: 403-793-7341 Equipment Finders Twin Falls, ID Dave: 208-731-4040 Vista Equipment Hazen, NV. Jerry: 775-741-0688

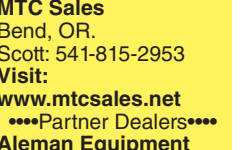
923 Farm Equipment



NEW IA Pasture Aeration: Bolt on teeth. Heavy Duty Frame. •8ft \$7,995 •10ft \$11,995 •12ft \$11,995 •27ft wing fold, \$32,900. Includes cement blocks. MTC Sales Bend, OR. Scott: 541-815-2953 Visit: www.mtcsales.net



Aleman Equipment Dutchess, Alberta, CAN. Jerry: 403-793-7341 Equipment Finders Twin Falls, ID Dave: 208-731-4040 Vista Equipment Hazen, NV. Jerry: 775-741-0688



New IA Subsoilers 26" Clearance •3 Shank \$2,995 •5 Shank \$3,795 •7 Shank \$4,895 Gauge Wheel Set, Add \$995. •HD Subsoilers with Dual Gauge Wheels. Weight 4,500 to 5,500 lbs. 30" Clearance. •7 Shank \$11,995 •9 Shank \$12,995 •11 Shank \$13,995 MTC Sales Bend, OR. Scott: 541-815-2953 Visit: www.mtcsales.net



Aleman Equipment Dutchess, Alberta, CAN. Jerry: 403-793-7341 Equipment Finders Twin Falls, ID Dave: 208-731-4040 Vista Equipment Hazen, NV. Jerry: 775-741-0688



NEW IA Super Duty Off-set Wheel Discs. EZ Adjust Gang Angle. 30" notched blades front and rear, adjustable scraper kit, 2" gang shafts, split gang shafts, high clearance. 9,000 to 12,000 lbs. •12ft \$31,900 •14ft \$33,900 •16ft \$35,900 •21ft \$40,900 •10ft to 25ft MTC Sales Bend, OR. Scott: 541-815-2953 Visit: www.mtcsales.net



Aleman Equipment Dutchess, Alberta, CAN. Jerry: 403-793-7341 Equipment Finders Twin Falls, ID Dave: 208-731-4040 Vista Equipment Hazen, NV. Jerry: 775-741-0688

923 Farm Equipment

Western STORAGE TRAILERS 1-800-OK-2-RENT Rent or Sale Containers and Trailers

CONTAINERS: 20' & 40' TRAILERS: 27', 40', 45' & 48' Western Mobile Storage 1-800-652-7368 • 541-342-1835 Eugene, OR

Ask about our Rental/Purchase/Consignment Program. It includes 100 hrs of use per month. Free delivery to the Treasure Valley.

This is a partial list. See our website for a complete list. www.ray-brothers.com

2017 JD 6120R Auto Track Ready, 6,100 hrs. \$69,500 2015 JD 6170M, good cond., 7,700 hrs. \$139,000 2015 JD 6130R TLS front axle suspension, 5,800 hrs. \$69,000 (2 Avail.) 2013 JD 7200R, PQ, 20 spd., 4,500 hrs. \$95,000 2019 JD 7210R, e23 PS, 5,500 hrs. \$134,900 (3 Avail.) 2018 JD 8245R, PT Warr., 5,500 hrs. \$139,000 2014 JD 6140M good tires, 16 sp. PQ, 6,552 hrs. \$52,000 (2 Avail.) 2013 JD L341 Large Square Baler, 18k & 22k Bales. \$79,000 2010 JD 9670STS Combine, nice small grain combine, 1,200 hrs. \$89,900 2014 JD 5680 Combine, duals, good tires, 2,100 hrs. \$100,000 2013 JD 5680 Combine, duals, chopper, yield monitor, 1,850 hrs. \$169,000

Ray Brothers Equipment (208) 880-6344 • Call or Text Chris Ironside, OR • Financing Available! Email for more info CHRISRAY@RAYBROTHERS.NET

WESTERN TRAILERS WWW.WESTERNTRAILER.COM ALL TRAILERS IN STOCK & READY FOR DELIVERY!



2022 48' Western Ag Express Floor Tandem Axle \$89,500



2017 44' TTC Ag Lite Belt Tandem Axle \$43,500



2019 53' Great Dane Reefer \$98,000



2016 53' Hyundai Reefer \$80,000 888.344.2539 Great Dane

NORTON'S WELDING 866-628-2497 541-569-2436 • 541-398-2900 Lostine, OR • www.nortonwelding.com

TRACTORS Branson 5835R, 2-remotes, w/ BL350 loader. CALL Branson 4820M w/ BL200 loader, 2-remotes and 3rd function valve. CALL (2) Branson 3620M w/ BL200 loader, bolt-on cutting edge. CALL

B&E 7 Ft USS Snow Blade w/out hyd. kit. \$1,650 B&E 7 Ft USS Snow Blade w/hyd. angle kit. \$1,900 General 72" USS Snow Blade w/out hyd. kit. \$2,100 General 60" USS Snow Blade w/out hyd. kit. \$1,995 General Hyd. Kit for snow blades. \$295 J&I Dually Flatbeds, New. \$2,400 Used RTC 70 Rototiller. \$1,995 5 Ft Rotary Mowers. \$1,195 4 Ft Rotary Mower. \$1,250 Quick Mount Skid Steer Plates (2). \$165

HAY EQUIPMENT USS 39" 2 Spear Bale Fork. \$575 USS 49" 2 Spear Bale Fork. \$595

Braber Equipment 6FT Rotary Mower. \$1,765 Braber Equipment 5FT Rotary Mower. \$1,555 Braber Equipment 4FT Rotary Mower. \$1,350 Braber Equipment Pull Behind 35 ton Log Splitter. \$2050 Braber Equipment 48" USS Pallet Forks. \$850 Braber Equipment 42" USS Pallet Forks. \$750 Braber Equipment 3pt 22 Ton Log Splitter. \$1,575 74" Clamshell Bucket w/USS mount. \$2,495 Used 12" Auger w/gearhead 3pt attachment. \$995 General 66" Front Bucket Shell. \$565 General 72" Front Bucket Shell. \$1,025 New 18" Backhoe Bucket. \$450 Used Case 12" Backhoe Bucket. \$750 9" Auger Bit. \$250 3pt Cherry Picker. \$225 Pull Type on Rubber Mount V Ditcher. \$750

FARM EQUIPMENT Harrow Draw Bar 4-12 Foot. CALL Hesston 4650 Center Line Baler. CALL

2003 Hesston 956A Round Baler. \$13,500 3Pt 4x6 Ft 5/8" Harrow with carrier. \$550 Various Sizes 1/2" Harrow. CALL Used 9 1/2 ft. wide Land Plane on Rubber. \$1,500

CONSTRUCTION EQUIP. Bobcat E35i w/ 34" clean out bucket