

758 Cattle Beef

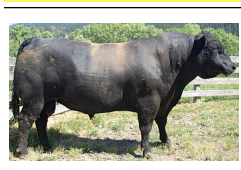


Bulls/ Polled Herefords: Yearling and two year olds, easy calving from Canadian bloodlines, best selection and unbeatable prices. Portland, OR. 503-789-1531

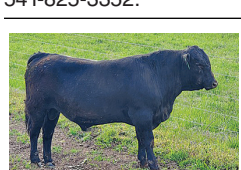
50 Salers Heifer Spring Pairs: Red or Black. Developed in a closed herd on our eastern Oregon ranch since 1981. Flying T Ranch, Sprague River, OR. 541-533-2416 cattle@flyingtsalers.com



Angus Bulls For Sale: Emmet Valley Ranch Emmett, Idaho Call 208-365-3621 www.cattleandshoop.com



Registered Black Angus Virgin Bulls: Forage developed with balanced traits. Out of a son of S Chisum 255 (photo). Bloodlines also include S A V Recharge, MAR Innovation, B C C Emblazon. Semen tested/ bull soundness exam, vaccinated/ wormed, docile, 55 years production genetics. Swingley Angus Century Farm, Days Creek, OR, 541-825-3352.



(2) Registered Long Yearling Black Angus Bulls: calving ease growth bulls, out of Mytty and Connealy Final Product lines with many Pathfinder generations. Price \$2250 to \$3000. Delivery Available. Please call for more information. ELGIN, OR 541-910-6441



Registered Polled Hereford Bull: 14 months, gentle, EPDs available, \$2400. TENINO, WA 360-264-4050



Bred Heifers: 16 month old, \$1200. Polled Hereford Bulls 16 months old or younger. Churchill Bloodlines. Low birth weight calves. Very Gentle, \$1600. Will deliver. Quincy, WA. 509-785-6291, 509-750-1274

801 Timber/Lumber

NORTHWEST HARDWOODS

ALDER WANTED

Also Maple and Ash: Saw Logs Pulp Logs and Timber Deeds

Contact our Resource Group at these locations:

Coos Bay, OR:	Tim T.	(541) 231-4758
	Lee A.	(541) 290-9892
Eugene, OR:	Tim T.	(541) 231-4758
Garibaldi, OR:	Lee A.	(541) 290-9892
Salem, OR:	Tim T.	(541) 231-4758
Longview, Wa:	John A.	(360) 269-2500
	Josh M.	(360) 509-3599
Centralia, WA:	Bill B.	(360) 520-2287
	Jeremy M.	(360) 520-5565
Everett, WA:	Eric F.	(360) 708-9265
OR & WA	Small Woodlands Specialist	Josh M. (360) 509-3599

802 Fencing

ROCKY MOUNTAIN STEEL

- USED CABLE
- ALL FENCING HARDWARE AVAILABLE
- CABLE CLAMPS

Direct Ship & Cutting Available

400 3rd Ave. North Nampa, ID 83687
800-851-8612
208-466-0036
rockymtnsteel@integra.net

758 Cattle Beef

40 Yearling Bred Black Angus Heifers. Noah's Angus Ranch, Angus Cattle Since 1955. Cambridge, ID. 208-550-0531 www.noahsangusranch.com

Shorthorn Bulls: March-April Yearlings. Selected for length, width, depth and muscling. Mothers sound, thick, calm, good milk. Good carcass data. Coulee-City, WA. Call 509-632-8709, 509-683-3272



Purebred Registered Polled Hereford Bull: 16 months, ready to breed. Call for price. TILLAMOOK, OR 503-812-2918



(10) Full blood Akaushi, 2 year old bulls: approximately 1300 lbs. Fertility and Trich tested, (6) half blood 2 year old Akaushi bulls, approximately 1400 lbs. Fertility and Trich tested, (12) half blood Akaushi 1 year old open yearling heifers, BANGS vaccinated, 750 lbs. (10) 3/4 blood Akaushi yearling open heifers, BANGS vaccinated, 800 lbs. Mel-lott Ranch Bethune, CO. 719-740-0403

(35) Salers Bulls: All ages from yearlings to 2 year olds. Red and Black calving ease polled bulls developed on our eastern Oregon ranch for 39 years. Quiet temperament, delivery available. Flying T Ranch Sprague River, OR. 541-533-2416 cattle@flyingtsalers.com

Angus Bulls, ready to work, forage developed, calving ease, Mary's River Angus, Monmouth, OR, 503-606-0253.

(2) Yearling Registered Black Angus Bulls. Low birth EPDs. Schmidlin Angus Farms. Vernonia, OR. 503-429-7861

2 year old Charolais Bull, \$2500 OBO, Junction City, OR. 541-998-2429.

Bred Registered Angus with Angus Calf, \$2500. Bred Registered Angus with Wagyu calf, \$3500. YAKIMA, WA (509)728-6791

Registered Polled Hereford Bulls for sale. All Virgin bulls. Sired by BEHM 100W CUDA 504c, and Mohican THM Excede Z426. Top quality range bulls, easy to handle. A full list of EPDs and photos are on our website: lanemountain.com. Prices range from \$1900 to \$3200. Delivery available. Call or text Linda 775-750-5749 @ Lane Mtn. Polled Herefords or email: lanemtnherefords.com. Roseburg, OR

Does your business need calls, customers and sales? Advertise in Capital Press Line Ad Classifieds. Call 1-800-882-6789

802 Fencing

WE'RE MORE THAN JUST PILING, WE'RE YOUR STEEL PIPE SUPPLIER

RIGFOOT PIPE & PILING CALL NOW! 800-877-7453
15422 CANYON RD E, PUYALLUP, WA | BIGFOOTPIPE.COM
INVENTORY AVAILABLE NATIONWIDE

804 Building Materials

804 Building Materials

804 Building Materials

804 Building Materials



PARKER BUILDINGS INC. QUALITY SINCE 1982
1-800-331-0155 503-981-0890

EAVE	10'	12'	14'	16'
24 x 36	\$11,421	\$12,405	\$13,263	\$14,179
30 x 36	\$13,320	\$14,340	\$15,282	\$16,283
30 x 48	\$15,974	\$17,042	\$18,195	\$19,674
36 x 36	\$15,115	\$16,162	\$17,206	\$18,445
36 x 48	\$18,185	\$19,376	\$20,556	\$22,331
40 x 48	\$20,348	\$21,609	\$22,861	\$25,118
40 x 60	\$23,596	\$24,994	\$26,475	\$28,460

Kit contains: (1) 3'x6'-8" Entry Door, (1) 11' wide slider door, Galvanized Roof, Painted Walls & Trim.
These buildings have Engineered Plans & price is based on 25# Snow load, "B" Exposure

Building Materials Supplier FOB HUBBARD, OR
WWW.PARKERBUILDINGS.COM

LONG BROS. BUILDING SUPPLY Since 1974

Pole Building Kits

Let our staff at Long Bros. help you with a building that fits your needs! We work up each building price with the pieces you want, design, style and size. Call or e-mail for a current price quote on the building you've always wanted!

- 3 Sided Buildings
- Roof Only
- Full Enclosed Buildings
- Equipment Storage
- Custom Buildings
- Barns and Shops

195 Birds Eye Ave. Woodburn, Oregon 97071
(503) 981-4041 (877) 920-8728 (503) 982-7821 Fax
polebuildings@longbrosblgd.com

Locally Owned and Operated Since 1974!

CapitalPress.com

VIEW ALL CLASSIFIED ADS ABSOLUTELY FREE!

INSTANT EXCLUSIVE UNLIMITED

NEWSPAPER • EPAPER • MOBILE • WEBSITE • E-MAIL UPDATES

805 Farm Buildings

805 Farm Buildings

805 Farm Buildings

805 Farm Buildings

METAL BUILDINGS!

53 Years of Manufacturing Excellence Buy Factory Direct & Save!

Equipment Storage ■ Shop ■ Barn ■ Arena
Hay Barn ■ Dairy Shade ■ Hangar
Roofing, Siding & Trim

Call Today!

R & M STEEL CO.
Caldwell, Idaho
208-454-1800
www.rmsteel.com
sales.rmsteel@gmail.com

804 Building Materials

Entire Old Dairy with buildings to be removed. Metal roofs, lots of metal to scrap, old barn wood and beams. Looking for someone to remove buildings for materials. Bonanza, OR.(541) 410-8752

CARD MINI-MIX SMALL YARDAGE CONCRETE

Fence post to commercial construction. Only pay for what you use!
Card Mini-Mix has 3 trucks servicing Salem, Albany, Corvallis and surrounding areas.
Remote drive available on all trucks. Operators can pour and drive trucks simultaneously saving you time, labor and money.
Quality concrete delivered on time, any time.
CALL/TEXT: 503-949-7218

(21) 35ft Ladder Trusses, (50) 4x12 pitch trusses, 32ft long, INDEPENDENCE, OR 503-383-6722, 503-838-3740

GLULAM BEAMS: Used Treated and Untreated. Many sizes up to 65' long. Portland, OR. 503-936-9414

CALL BY 3PM MON - FRI AND GET YOUR LINE AD ONLINE IN 24 HOURS! (On approval)

Your line ad will also run in the next available print edition of Capital Press.

Capital Press 800-882-6789 CapitalPress.com

805 Farm Buildings

Martin Cisneros Pole Buildings & Concrete: Shops, garages, arenas, hay storage. Agriculture/ Residential, additions and repairs. Serving Oregon CCB# 135771. Licensed, bonded and insured. Excellent references. 503-375-9273 or 503-507-2847

813 Antiques & Collect-

Black Walnut starts 12" to 24" Seed from over 200 year old tree. \$10 each, Quantity discounts. McMinnville, OR. 503-560-0795

822 Nursery Stock -

Hazelnut Trees: McDonald, Jefferson, Yamhill, Wepster, York, Eta, Theta, Felix. Dayton, OR. 503-864-4422

Blueberry 20+ Varieties, Raspberry, Marion, Boyesen, Currant, Grape, Kiwi, Strawberry Plants. Canby, OR. 541-543-7566 www.canby.com/morning-shade

824 Seed

ALFALFA SEED

Quality VNS Alfalfa Seed: Touchet, WA. Chris Kregger 509-394-2400

Oats \$13/ bag; Wheat \$7/ bag. Pasture Seed \$120/ lb. Lawn Seed \$1.80/ lb. Wheat Straw \$120/ ton. Grass Hay \$180/ ton. Rickreall, OR. 503-623-6922

825 Fertilizer & Soil Amendments

Compost \$15 per yard, volume discounts. Willamette Landscape Supply. 503-304-7546

PLACE LINE CLASSIFIED ADS TOLL-FREE FROM ANYWHERE! 1-800-882-6789

824 Seed

BSG BAILEY SEED & GRAIN LLC

AVAILABLE cleaning capacity for this year's harvest

Come by and check out our new **SEED PROCESSING PLANT!**

CONTACT US TODAY!

- Desoil ability
- Color sorting
- Size and shape
- Gravity decks & much more

As Always, we provide Quality Turf, Forage & Grain seed products

100% NATURAL ORGANIC POULTRY MANURE FERTILIZER

ENVIRONMENTALLY FRIENDLY HIGH PERFORMANCE - BIOLOGICAL BENEFITS

GRADUAL & STEADY RELEASE OF NPK & MICRONUTRIENTS

FRESH, COMPOSTED, PELLET OR GRANULAR TEXTURE AVAILABLE

PERFECT FOR HAY, TREES, TURF, VEGETABLE OR FLOWER GARDENS

FIELD APPLICATION SERVICES AVAILABLE! Call for pallet or bulk pricing discounts.

D. Stutzman Farms
P.O. Box 307 Canby, OR 97013
888-877-7665

The Price Of Chemical Fertilizer Is Outrageous!

- Pastures, Farms, Hemp and Nuts
- Improve soil without spending more
- Stimulates life in soil & supplies all the nutrients most fertilizers neglect
- Allows plants to reach maximum genetic potential, toxin free

Dr. JimZ

Bulk quantities available! Made in Idaho!
888-394-4454 | www.DrJimZ.com