

Don't Miss Another Issue of Capital Press!

The latest agricultural and natural resources news.

Capital Press
EMPOWERING PRODUCERS OF FOOD & FIBER

THE BIG DRY
Drought, water shutoff 'tear at fabric' of Klamath Basin

THE BIG DRY
Drought, water shutoff 'tear at fabric' of Klamath Basin

THE BIG DRY
Drought, water shutoff 'tear at fabric' of Klamath Basin

SUBSCRIBE TODAY!



Capital Press
EMPOWERING PRODUCERS OF FOOD & FIBER

1 year
\$65

2 years
\$115

EZ Pay
Digital
\$4/month

Digital + Print
\$5/month

1-800-781-3214
CapitalPress.com

210 Trucks



1994 Chevrolet C3500, 10' Flatbed, 7.4 Gas, Automatic, Asking \$9500. Sandy, OR. Call Pepe: 503-544-3232; Call Pat: 503-407-9062



1998 Isuzu, V6, 6 speed manual transmission, 16ft dump bed, 20,000GVW, 166,178 miles. Asking \$22,500 OBO. Salem, OR. 503-378-9179



2002 Peterbilt 379 Dumptruck C15 Caterpillar Engine, 18 speed manual, 872,664 miles 18ft dump box with lift gate and 2 pea chutes, \$85,000. Roy, WA. 253-405-9520



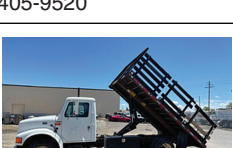
2020 Dodge Ram 3500, Fully Loaded Laramie, Automatic, 72,000 Miles, Bradford Flatbed, Stock Wheels, Goose Neck, Tool Boxes, Asking \$72,500. Call Pepe: 503-544-3232; Call Pat: 503-407-9062 Sandy, OR. (503)668-5024



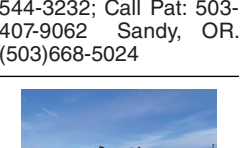
2007 Freightliner tandem axle dump truck with 15-18 yard bed and STRONG ARM. MB450 HP Diesel. Eaton ULTRA-SHIFT 10 speed automatic transmission. PS, AC, CC, Jake brake, SIDE LOCK REARS, load tarp, trench gate, Tuf-Trac rear suspension 425/65/22.5 fronts with 11/22.5 rears on Alloy wheels. Very clean and well maintained truck from California that is work ready. \$39,000. Twin Falls, ID. Call 208-613-0050



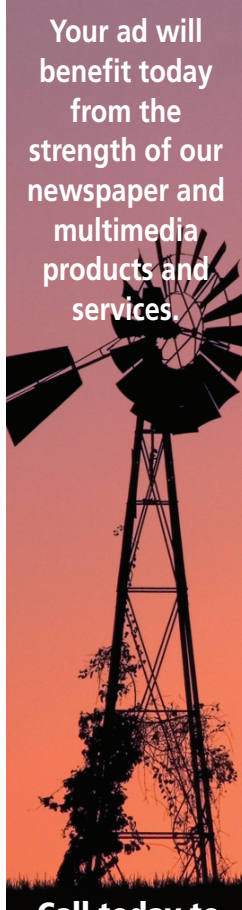
2000 IHC with Altec 53' articulating double bucket man lift with material handler. DT466 diesel. Allison Automatic. PS, AC, CC. New 22.5 radials. Certified. One owner truck from a State Agency that is in near new condition. It runs, drives, and operates like new. WORK READY, \$19,900. Located in Twin Falls ID. Call 208-613-0050



1997 IHC 470 with 15 ft. dump bed with stake sides. T444E Powerstroke Diesel. Allison AUTOMATIC. PS, AC. 86,000 ACTUAL MILES. 24,000 GVW. Hydraulic Brakes. NO CDL! Very clean and well maintained truck from the California Dept. of Parks. Runs, drives, and operates like new. \$14,900. Located in Twin Falls ID. Call 208-613-0050



2007 IHC 4400 with 12K. Lb. folding crane 25ft. reach and Hydraulic cable winch and outriggers. 15ft. flatbed with tool boxes and torch compartment and 3500lb. lift gate. DT466 Diesel with Fuller 10 speed transmission. Low Miles PS, AC, CC. 80% 22.5 radial tires. Spotlessly clean and well maintained truck from the California DOT. RUST FREE! Runs, drives and operates like new. WORK READY. \$25,900. Located in Twin Falls ID. Call 208-613-0050



Your ad will benefit today from the strength of our newspaper and multimedia products and services.

Call today to advertise.
Capital Press
1-800-882-6789
Fax 503-370-4383
CapitalPress.com



2001 Freightliner tandem axle dump truck. 16 yard round bottom bed with HiLift tailgate and load tarp. CAT C12 Diesel 410HP. RTLO 13 SPEED. Jake brake. PS, AC, CC. Hendrickson rears. 70% 11/22.5 radials. 170,000 ACTUAL MILES. Very clean one owner former Municipal truck that has been well maintained and is work ready, \$42,000. Located in Twin Falls ID. Call 208-613-0050



1980 Mack 6x6 tandem axle dump truck. 6 Cylinder Mack Diesel. 9 speed with Lo, Drive and Overdrive Auxiliary. 4x4 transfer. Near new 22.5 Radial tires. LOW MILES. Came from a large Municipal Airport and has been well maintained, is very clean. Runs, drives and operates well. Comes with a snowplow. Drive it anywhere. \$24,900. Located in Twin Falls ID. Call 208-613-0050

DON'T FORGET
Call in your classified ad by Wednesday:
10:00...Display (bordered) Ad
Noon.....Line Ad
Toll free 1-800-882-6789
Fax (503) 370-4383
CapitalPress.com



2001 Freightliner Classic with 20 yard dump bed with strong arm. Cummins Diesel with 325HP. 10 Speed. PS, AC, CC. Bed is Aluminum and you can't tell it from new. The entire truck is spotless. All tires are Super Single 425/65/22.5 on Alcoa wheels. They are 90%. 66,000 GVW. plus strong arm. Truck is in near new condition and is all original on the paint. NO RUST! 170,000 MILES. Runs, drives and operates like a new truck. Work ready, \$39,900. Located in Twin Falls ID. Call 208-613-0050

Farm Seller.com
AMERICA'S FARM AND RANCH DATABASE

Pro Truck!
EQUIPMENT SALES
(253) 863-8782 | Cell 206-510-4780
sales@pro-truck.com

1999 Ford F350 13' Flatbed Dump 257 HP, WB 167", steel frame, power steering.....\$17,500

1996 Kenworth T800B with Wet Kit Tandem Axle Day Cab Tractor Truck, WB 185", 365 HP, 15-sp, steel frame.....\$29,500

2013 Peterbilt Cab and Chassis Cab over Engine, 3 axle, 24 foot, 202" WB, Cummins ISL engine, 380 HP, 6-sp automatic.....\$19,500

1999 Freightliner Century FLC12 Tandem axle sleeper, tractor truck, 225" WB, Caterpillar C12 engine, 355 HP, steel frame.....\$39,500

www.pro-truck.com

Benefit today from the strength of Capital Press newspaper & multimedia products & services.
ADVERTISE TODAY! • 1-800-882-6789 • CapitalPress.com

STAY CONNECTED! ANYTIME. ANYWHERE.

- Newspaper
- E-Editions
- Mobile
- Websites

Capital Press
800-882-6789
CapitalPress.com

We deliver your message to the West's ag audience, wherever they are.

- Newspaper • E-Editions • Mobile • Websites
- Flyers • Custom Publications

Call us today and see how we can help your business grow.

Capital Press
800-882-6789
CapitalPress.com

R & G MACHINING AND ENGINE PARTS
COMPLETE DIESEL MACHINE SHOP AND TRUCK REPAIR
MULINO, OREGON • SHOP: 503-829-6038 • NATIONWIDE: 1-800-823-6038
We Absolutely, Positively Have The Best Remanufactured Engines Available Anywhere!
Huge Inventory • Expert Technical Assistance

1) Exchange crankshafts
2) We Grind and Repair crankshafts and camshafts
3) Exchange cylinder heads
4) Exchange connecting rods
5) Cylinder head and block o-ringing
6) We sleeve and Repair Engine Blocks
7) Line boring & line honing
8) Engine Balancing
9) Huge Inventory of Diesel and Gas Engine Parts

REBUILT DIESEL L/B ENGINES

CUMMINS	PERKINS & ISUZU
3.9-4BT.....\$4,650	Starting at.....\$5,995
5.9-88-02.....\$4,850	Starting at.....\$5,995
5.9-03 & up.....\$5,150	Starting at.....\$5,995
6.7 C/R.....\$5,450	Starting at.....\$5,995
FORD	YANMAR & KUBOTA
6.0 P/S.....\$5,845	Starting at.....\$4,495
6.4 P/S.....\$6,545	Starting at.....\$3,995
6.7 P/S.....\$7,650	Starting at.....\$3,995
6.9-7.3 IDI.....\$5,150	Starting at.....\$5,995
7.3 P/S.....\$5,150	Starting at.....\$5,995
GM	DEUTZ
6.6 Duramax.....\$6,550	Starting at.....\$9,995
6.2-6.5.....\$4,895	Starting at.....\$5,995
JOHN DEERE & IH	HINO & IVECO
Starting at.....\$5,995	Starting at.....\$5,995
KOBELCO, KOMATSU, HITACHI	CATERPILLAR & HYUNDAI
Starting at.....\$5,995	Starting at.....\$5,995

THIS MONTH'S SPECIALS
Rebuilt & Balanced Injectors
Hi Flow Turbos
Rebuilt Injection Pumps
FORD - GM - DODGE

Call on other gas or diesel engines. We are a major rebuilder on all diesel brands. All work done in house!

WANTED
Cummins 6.7 and 5.9 - Engine Cores
R&G Machining 503-829-6038

IN BUSINESS SINCE 1975.

OVER 250 ENGINES & 450 CYLINDER HEADS IN STOCK!
We have a complete line of import diesels and obsolete diesels for your mini excavators or skidsteers.

NEED ENGINE PARTS, GAS OR DIESEL - CHECK IT OUT:
WWW.EBAY.COM/STR/GRUMPSPERFORMANCECENTER
GRUMPSPERFORMANCE@GMAIL.COM

A name you can count on.

Benefit today from the strength of Capital Press newspaper and multimedia products and services.

- Newspaper
- E-Editions
- Websites
- Mobile
- Flyers
- Custom Publications

1-800-882-6789 • FAX 503-370-4383 • www.CapitalPress.com

POWER FLEET & COMMERCIAL SALES
MEDIUM DUTY DEALER

2021 Chevrolet Silverado Medium Duty Work Truck
Stock #24237

Call for your business preferred price!

Jim Church 503-910-7784 jimc@powerautogroup.com
Delana Johnson 503-769-7100 delana@powerautogroup.com
Brian Heinrich 503-504-3629 brian@powerautogroup.com
Ryan Church 503-877-7102 ryan@powerautogroup.com

CHEVROLET BUSINESS ELITE
POWER FLEET - COMMERCIAL
WWW.POWERAUTOGROUP.COM
503-769-7100
CHEVROLET BUSINESS ELITE