

**Don't Miss Another Issue of Capital Press!**

**Capital Press**  
EMPOWERING PRODUCERS OF FOOD & FIBER

The latest agricultural and natural resources news.

**ANYTIME ANYWHERE**

- 1 year \$65
- 2 years \$115
- EZ Pay
- Digital \$4/month
- Digital + Print \$5/month

**1-800-781-3214**  
CapitalPress.com

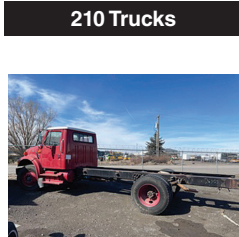
**SUBSCRIBE TODAY!**



**201 IHC 2574** tandem axle dump truck. 15 yr. bed with HiLift tailgate. Cummins N14 Diesel with 425 HP. 13 Speed transmission. Jake Brake, PS, AC, CC. 90% 22.5 Radial Tires. Spotlessly clean and well maintained, one owner truck from a large State DOT. RUST FREE! \$39,000. Located in Twin Falls, ID. Call 208-613-0050



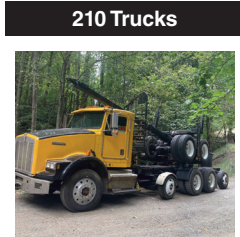
**1993 Spartan Firetruck.** 8.3 Cummins Diesel. Allison AT. PS, AC. 750 gallon tank. Suction draft and spray. 2"3", and 150 Foot. 1" hose and electric rewind reel with nozzles. Brand new radial 22.5 tires. 80K ACTUAL MILES. Like brand new truck from the Cal. Dept. of General Services. \$13,900. Located in Twin Falls ID. Call 208-613-0050



**1996 IHC 4900 cab and chassis.** DT466 Diesel, Allison 6 SPEED Automatic. PTO capable, PS, AC, CC, Retarder. Will take a 16ft. bed. Double frame. 33,000GVW. Near new 11/22.5 radials. One owner, well maintained former State Forestry truck. Bed and work ready, \$13,900. Located in Twin Falls ID. Call 208-613-0050



**2004 IHC 7400 Digger Derrick** with Altec D3050 TR derrick. 50ft. reach. 30,000lbs. lift. 4 outriggers. 2 tool circuits, Upper and lower controls. 20,000LB. front winch with Capstan. Near new 11/22.5 radials. DT530 Diesel with Allison Automatic trans. PS, AC, CC. Side lock rear differentials. 98,000 ACTUAL MILES. One owner truck from a large Electrical Utility. Everything on the truck works properly. Clean, well maintained and work ready, \$29,900. Located in Twin Falls ID. Call 208-613-0050



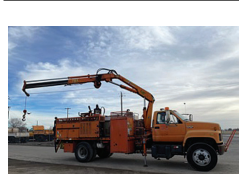
**1996 KW Log Truck** and trailer, N14 cummins, 13 speed, \$40,000. Deer Island, OR. 503-438-5361



**1986 IHC 2564 S/A dump truck.** 8 yard bed. Cummins L10 Diesel. Fuller 13 speed transmission. PS, AC, Jake brake. 33K GVW. Plumbed for trailer. Near new 11/22.5 radial tires. 200K ACTUAL MILES. Extremely clean and well maintained former State DOT truck that is work ready. \$18,900. Located in Twin Falls ID. Call 208-613-0050



**2020 Dodge Ram 3500,** Fully Loaded Laramie, Automatic, 72,000 Miles, Bradford Flatbed, Stock Wheels, Goose Neck, Tool Boxes, Asking \$74,500. Call Pepe: 503-544-3232; Call Pat: 503-407-9062 Sandy, OR. (503)668-5024



**1995 GMC TopKick** with Copma 12000LB. knuckle crane with 26Ft. reach, Bobcat 250D welder and 2500LB. liftgate. 14Ft. bed with compartments and auger head with 10" auger. CAT 6 cylinder Diesel. Allison 6 speed. transmission. PS, AC. 80% 11/22.5 radials. Very clean and well maintained truck from the California DOT. Work ready, \$19,900. Located in Twin Falls ID. Call 208-613-0050

**THIS AD SPACE could be yours!**

**1-800-882-6789**  
or FAX 503-370-4383  
CapitalPress.com



**1980 OSHKOSH 6x6** tandem axle cab and chassis. 20,000 ACTUAL MILES. 2000 HOURS. NTC290 Cummins Diesel. Fuller 9 speed with 3 speed auxiliary. PS, AC. 11/22.5 rears, 385/65/22.5 fronts. All are 90% of new. Spotlessly clean and well maintained all wheel drive that is in near new condition. It runs, drives and operates like new, \$23,900. Located in Twin Falls ID. Call 208-613-0050

Subscribe Now To Capital Press And Get Connected Directly To Regional Agricultural News! Call 1-800-781-3214

Looking for a farm or ranch? VISIT **FarmSeller.com**

**CHECK** line ads online at **CapitalPress.com**

**R & G MACHINING AND ENGINE PARTS**  
COMPLETE DIESEL MACHINE SHOP AND TRUCK REPAIR  
MULINO, OREGON • SHOP: 503-829-6038 • NATIONWIDE: 1-800-823-6038  
We Absolutely, Positively Have The Best Remanufactured Engines Available Anywhere!  
Huge Inventory • Expert Technical Assistance

REBUILT DIESEL L/B ENGINES	
CUMMINS	PERKINS & ISUZU
3.9-4BT.....\$4,650	Starting at.....\$5,995
5.9 '88-'02.....\$4,850	<b>MITSUBISHI &amp; NISSAN</b>
5.9 '03 & up.....\$5,150	Starting at.....\$5,995
6.7 C/R.....\$5,450	<b>YANMAR &amp; KUBOTA</b>
<b>FORD</b>	Starting at.....\$4,495
6.0 P/S.....\$5,845	<b>BOBCAT &amp; SHIBAURA</b>
6.4 P/S.....\$6,545	Starting at.....\$3,995
6.7 P/S.....\$7,650	<b>DOOSAN &amp; TAKEUCHI</b>
6.9-7.3 IDI.....\$5,150	Starting at.....\$5,995
7.3 P/S.....\$5,150	<b>DEUTZ</b>
<b>GM</b>	Starting at.....\$9,995
6.6 Duramax.....\$6,550	<b>HINO &amp; IVECO</b>
6.2-6.5.....\$4,895	Starting at.....\$5,995
<b>JOHN DEERE &amp; IH</b>	Starting at.....\$5,995
Starting at.....\$5,995	<b>CATERPILLAR &amp; HYUNDAI</b>
<b>KOBELCO, KOMATSU, HITACHI</b>	Starting at.....\$5,995
Starting at.....\$5,995	

We have a large inventory of rebuilt or remanufactured cylinder heads, connecting rods, crankshafts, and blocks on an exchange basis for diesel and gas engines.

Call on other gas or diesel engines. We are a major rebuilder on all diesel brands. All work done in house!

**WANTED**  
Cummins 6.7 and 5.9 - Engine Cores  
R&G Machining 503-829-6038

**IN BUSINESS SINCE 1975.**

**OVER 250 ENGINES & 450 CYLINDER HEADS IN STOCK!**  
We have a complete line of import diesels and obsolete diesels for your mini excavators or skidsteers.

**NEED ENGINE PARTS, GAS OR DIESEL - CHECK IT OUT:**  
WWW.EBAY.COM/STR/GRUMPSPERFORMANCECENTER  
GRUMPSPERFORMANCE@GMAIL.COM

**Pro Truck**  
EQUIPMENT SALES  
(253) 863-8782 | Cell 206-510-4780  
sales@pro-truck.com

**1999 Ford F350 13' Flatbed Dump** 257 HP, WB 167", steel frame, power steering.....\$17,500

**1996 Kenworth T800B** with Wet Kit Tandem Axle Day Cab Tractor Truck, WB 185", 365 HP, 15-spd, steel frame.....\$29,500

**1986 Utility 48' Flatbed** 2 axle, spring susp., wood deck.....\$4,950

**1994 Freightliner FLD120** Tri Axle, Day Cab, Tractor Truck, 221" WB, 470 HP.....\$19,500

**www.pro-truck.com**

**LOVELL Truck Sales**  
680 SW 1st Ave (Hwy 99 E) Conby, OR LovellTruck@conby.com  
**1-800-451-0012 | (503) 266-5886**

**2006 Freightliner** tandem axle day cab Series 60 14L 515hp, Fuller 10speed, 3.70 ratio, 172" wb, 11R22.5, ps, ac, cruise control, air slide 5th wheel, dump valve, engine brake.....\$26,500

**1998 Kenworth T800 4-Axle Day Cab,** Cummins N14, engine brake, load scale, AC, power steering, cruise control.....\$32,500

**2017 International 4300** 18' box Cummins 240hp, Allison auto, 216" wheelbase, ps, ac, cruise control, power windows and locks.....\$36,500

**COMING IN THIS WEEK**  
2017 Freightliner 3-Axle Cascadia Day Cab

**LOVELLTRUCKSALES.COM**

**KENWORTH T800 4-AXLE CHASSIS**

**2 TRUCKS @ \$95,000** California Certified for Emissions

Cummins ISX engines, 18-spd. trans., single spd. Eaton rear-ends 3.91 gears w/locker, HENDRICKSON HAUL-MAX WALKING BEAM SUSP.

#71 FJ445875 2015, D46-170HP rears, 262" WB, 485hp...\$95,000  
#72 FJ445873 2015, D46-170HP rears, 262" WB, 485hp...\$95,000

**CLEAN AND IN EXCELLENT SHAPE! MAINTENANCE RECORDS - REGULAR OIL SAMPLES**

Thomas H. Ireland More info: www.irelandtrucking.com  
**IRELAND INCORPORATED** Call Charles Ireland 541-863-1501 Myrtle Creek, OR

**WE COVER A LOT OF GROUND!**

Let us deliver your message to the West's Ag Audience, wherever they are.

- Newspaper
- E-Editions
- Mobile
- Websites
- Flyers
- Custom Publications

Call us today to see how we can help your business grow.

**Capital Press**  
EMPOWERING PRODUCERS OF FOOD & FIBER

**800-882-6789**  
CapitalPress.com

**POWER FLEET & COMMERCIAL SALES**  
MEDIUM DUTY DEALER

**Jim Church** 503-910-7784 jimc@powerautogroup.com

**Delana Johnson** 503-769-7100 delana@powerautogroup.com

**Brian Heinrich** 503-504-3629 brian@powerautogroup.com

**Ryan Church** 503-877-7102 ryan@powerautogroup.com

**Silverado Med Duty Trucks** Ranging from 4500-6500 Call for your business preferred price

**2020 Chevy 5500XD LCF Diesel** Call for your business preferred price

**CHEVROLET BUSINESS ELITE** **POWER FLEET - COMMERCIAL** **CHEVROLET BUSINESS ELITE**

**WWW.POWERAUTOGROUP.COM**  
**503-769-7100**

Stay up to date on the latest agricultural news.

Advertise to buy or sell to our large northwest subscriber base.

Don't miss another issue of **CAPITAL PRESS**

**SUBSCRIBE TODAY!**  
**1-800-781-3214**  
CapitalPress.com

**CLASS 8 TRUCKS**  
**509-534-9088**

**2000 IH 4700 flatbed,** T444E diesel, Allison auto., 16' steel flatbed, non CD.....\$26,900

**2002 Peterbilt 6x6. CAT C10. RT011909ALL,** full lockers 23' CEOF.....\$69,900

**2000 Freightliner FLD120,** Detroit S60, 12.7, 10 spd., 4.11 ratio, 2 Line Wet Kit.....\$29,900

**2002 Freightliner Classic,** Detroit 12.7, Jakes, 15 speed, drop axle, A/C.....\$39,900

**2002 KW T800 dump truck,** Cummins N14+ with fresh OH, 18 spd., 46k rears, drop axle, roll tarp...\$89,900

**1999 Freightliner FLD120,** Detroit 12.7, 430 hp, 10 spd., 4.11 ratio, 220" WB, wet kit.....\$29,900