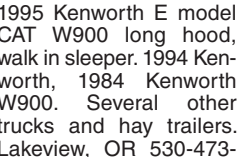


210 Trucks



1995 Kenworth E model CAT W900 long hood, walk in sleeper, 1994 Kenworth W900. Several other trucks and hay trailers. Lakeview, OR 530-473-9161

210 Trucks



2007 IHC 4400 with 12K. Lb. folding crane 25ft. reach and Hydraulic cable winch and outriggers, 15ft. flatbed with tool boxes and torch compartment and 3500lb. lift gate. DT466 Diesel with Fuller 10 speed transmission. Low Miles PS, AC, CC. 80% 22.5 radial tires. Spottlessly clean and well maintained truck from the California DOT. RUST FREE! Runs, drives and operates like new. WORK READY. \$25,900. Located in Twin Falls ID. Call 208-613-0050

210 Trucks



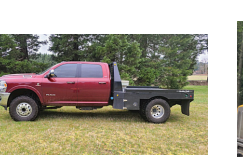
1986 IHC 2564 S/A dump truck. 8 yard bed. Cummins L10 Diesel. Fuller 13 speed transmission. PS, AC, Jake brake. 33K. GVW. Plumbed for trailer. Near new 11/22.5 radial tires. 200K ACTUAL MILES. Extremely clean and well maintained former State DOT truck that is work ready. \$18,900. Located in Twin Falls ID. Call 208-613-0050

210 Trucks



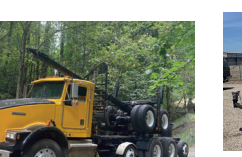
2020 Dodge Ram 3500, Fully Loaded Laramie, Automatic, 72,000 Miles, Bradford Flatbed, Stock Wheels, Goose Neck, Tool Boxes, Asking \$74,500. Call Pepe: 503-544-3232; Call Pat: 503-407-9062 Sandy, OR. (503)668-5024

210 Trucks



1996 KW Log Truck and trailer, N14 cummins, 13 speed, \$40,000. Deer Island, OR. 503-438-5361

210 Trucks



1997 Ford 2000 gallon water truck. 8.3 Cummins motor, Allison transmission, AC, 2 fronts, 2 rears, 1 side spray. Like new condition, \$28,500 OBO. Atwater, CA. 209-604-1342

210 Trucks



1995 GMC TopKick with Copma 12000LB. knuckle crane with 26Ft. reach, Bobcat 250D welder and 2500LB. liftgate. 14Ft. bed with compartments and auger head with 10" auger. CAT 6 cylinder Diesel. Allison 6 speed. transmission. PS, AC. 80% 11/22.5 radials. Very clean and well maintained truck from the California DOT. Work ready, \$19,900. Located in Twin Falls ID. Call 208-613-0050



2001 Freightliner tandem axle dump truck. 16 yard round bottom bed with HiLift tailgate and load tarp. CAT C12 Diesel 410HP. RTLO 13 SPEED. Jake brake. PS, AC, CC. Hendrickson rears. 70% 11/22.5 radials. 170,000 ACTUAL MILES. Very clean one owner former Municipal truck that has been well maintained and is work ready, \$42,000. Located in Twin Falls ID. Call 208-613-0050



1999 Ford F450 Spray Batch Truck: 225 gallon water tank, (2) 50 gallon batch tanks, 14 backpack sprayers, 150ft hose reel, 232,540 miles, \$20,000. Dallas, OR. 503-510-2373



2001 IHC 2574 tandem axle dump truck. 15 yard bed with HiLift tailgate. Cummins N14 Diesel with 425 HP. 13 Speed transmission. Jake Brake, PS, AC, CC. 90% 22.5 Radial Tires. Spottlessly clean and well maintained, one owner truck from a large State DOT. RUST FREE! \$39,000. Located in Twin Falls, ID. Call 208-613-0050



1993 Spartan Firetruck. 8.3 Cummins Diesel. Allison AT. PS, AC. 750 gallon tank. Suction draft and spray. 2", "3", and 150 Foot. 1" hose and electric rewind reel with nozzles. Brand new radial 22.5 tires. 80K ACTUAL MILES. Like brand new truck from the Cal. Dept. of General Services. \$13,900. Located in Twin Falls ID. Call 208-613-0050

"Both Tractors SOLD! Thanks!" Jim Petterson - Gig Harbor, Wash. Sell yours too in Capital Press!

CAPITAL PRESS CLASSIFIEDS
1-800-882-6789
CapitalPress.com

There Are Always Great Deals In Capital Press Classifieds. Call Now And Add Yours!
1-800-882-6789

BEST SELLERS "...Had great results and will definitely use Capital Press again."
Len St. Claire, Horseshoe Loop, Lebanon, OR
Call 1-800-882-6789 to advertise.

Call and list your ad in the West's best classifieds.



Rebecca Beach

DEADLINES
Classified Line Ads
Wed. at Noon
Classified Display Ads
Wed. at 10am

Capital Press 1-800-882-6789
EMPOWERING PRODUCERS OF FOOD & FIBER
CapitalPress.com

Don't Miss Another Issue of Capital Press!

The latest agricultural and natural resources news.

Capital Press
EMPOWERING PRODUCERS OF FOOD & FIBER

THE BIG DRY
Drought, water shutoff 'tear at fabric' of Klamath Basin

Edge rejects challenge to B2H transmission line

Tyson seeks to wrest control of feedlot from Agri Beef

Capital Press
EMPOWERING PRODUCERS OF FOOD & FIBER

THE BIG DRY
Drought, water shutoff 'tear at fabric' of Klamath Basin

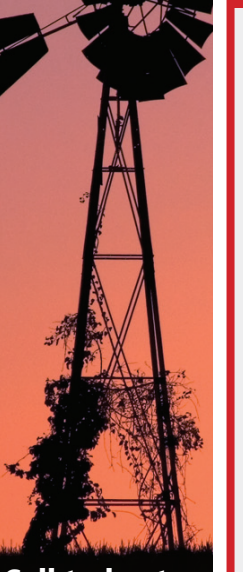
Capital Press
EMPOWERING PRODUCERS OF FOOD & FIBER

1 year \$65
2 years \$115
EZ Pay Digital \$4/month
Digital + Print \$5/month

1-800-781-3214
CapitalPress.com

SUBSCRIBE TODAY!

Your ad will benefit today from the strength of our newspaper and multimedia products and services



Call today to advertise.
Capital Press
1-800-882-6789
Fax 503-370-4383
CapitalPress.com

CLASS 8 TRUCKS
509-534-9088

2000 IH 4700 flatbed, T444E diesel, Allison auto., 16' steel flatbed, non CD.....\$26,900

2002 Peterbilt 6x6, CAT C10, RTO11909ALL, full lockers 23' CEOF\$69,900

2000 Freightliner FLD120, Detroit S60, 12.7, 10 spd., 4.11 ratio, 2 Line Wet Kit.....\$29,900

2002 Freightliner Classic, Detroit 12.7, Jakes, 15 speed, drop axle, A/C\$39,900

2002 KW T800 dump truck, Cummins N14+ with fresh OH, 18 spd., 46k rears, drop axle, roll tarp.....\$89,900

1999 Freightliner FLD120, Detroit 12.7, 430 hp, 10 spd., 4.11 ratio, 220" WB, wet kit.....\$29,900

R & G MACHINING AND ENGINE PARTS
COMPLETE DIESEL MACHINE SHOP AND TRUCK REPAIR
MULINO, OREGON • SHOP: 503-829-6038 • NATIONWIDE: 1-800-823-6038
We Absolutely, Positively Have The Best Remanufactured Engines Available Anywhere!
Huge Inventory • Expert Technical Assistance

ENGINES INSTALLED PRICING
Incidentals extra, Exchange 100,000 mile warranty when we install!
Depending on applications:
GM 6.2 - 6.5L installed.....\$7,495
Ford 6.4 P/S, installed.....\$12,750
Ford 94-03 7.3 P/S, installed.....\$8,600
Cummins 88-02 5.9, installed.....\$8,400
Cummins 03 & Up, 5.9 C/R, installed.....\$9,450
Cummins 6.7, installed.....\$10,250

REBUILT DIESEL L/B ENGINES

CUMMINS	PERKINS & ISUZU
3.9-4BT.....\$4,650	Starting at.....\$5,995
5.9 '88-'02.....\$4,850	MITSUBISHI & NISSAN
5.9 '03 & up.....\$5,150	Starting at.....\$5,995
6.7 C/R.....\$5,450	YANMAR & KUBOTA
FORD	Starting at.....\$4,495
6.0 P/S.....\$5,845	BOBCAT & SHIBAURA
6.4 P/S.....\$6,545	Starting at.....\$3,995
6.7 P/S.....\$7,650	DOOSAN & TAKEUCHI
6.9-7.3 IDI.....\$5,150	Starting at.....\$5,995
7.3 P/S.....\$5,150	DEUTZ
GM	Starting at.....\$9,995
6.6 Duramax.....\$6,550	HINO & IVECO
6.2-6.5.....\$4,895	Starting at.....\$5,995
JOHN DEERE & IH	Starting at.....\$5,995
Starting at.....\$5,995	CATERPILLAR & HYUNDAI
KOBELCO, KOMATSU, HITACHI	Starting at.....\$5,995

CUMMINS 5.9 MAGNUM
\$5,995 AND CORE \$3,850

IN BUSINESS SINCE 1975.

OVER 250 ENGINES & 450 CYLINDER HEADS IN STOCK!
We have a complete line of import diesels and obsolete diesels for your mini excavators or skidsteers. We work and repair all brands!

NEED ENGINE PARTS, GAS OR DIESEL - CHECK IT OUT:
WWW.EBAY.COM/STR/GRUMPYPERFORMANCECENTER
GRUMPYPERFORMANCE@GMAIL.COM



1980 OSHKOSH 6x6 tandem axle cab and chassis. 20,000 ACTUAL MILES. 2000 HOURS. NTC290 Cummins Diesel. Fuller 9 speed with 3 speed auxiliary. PS, AC. 11/22.5 rears, 385/65/22.5 fronts. All are 90% of new. Spottlessly clean and well maintained all wheel drive that is in near new condition. It runs, drives and operates like new, \$23,900. Located in Twin Falls ID. Call 208-613-0050



1994 GMC TopKick Single Axle dump truck & yard bed. 3116 CAT Diesel. Allison 6 speed. AT. PS, AC. Near new 22.5 Radial tires. 25900 GVW. 126,000 ACTUAL MILES. One owner truck from a large State DOT. It is as clean as a brand new truck and runs and drives the same. Honestly, the cleanest dump truck for sale in the NW. US. \$18,900. Located in Twin Falls ID. Call 208-613-0050.

211 Pickups



2012 Ford F-250 6.7 Lariat, tow package, backup camera, Bluetooth, navigation system, heated leather and cool seats, hill descent control, memory seat and pedal, power scope trailer heated mirrors, remote start, power sun roof, assisted step tailgate, 20" tires with fuel rims, like new condition, 61,000 miles, \$55,000 OBO. RAYMOND, WA. Call/ text (360)208-3128

F150 Ford 4x4 with rebuilt engine 20,000 miles ago, \$5000. 1980 Chevy needs carburetor and starter, best reasonable offer. GOLDENDALE, WA (509)773-5598

Red 2001 Ford F-150 4x4: needs home on a farm. 113,000 miles, great tires, new brakes, good condition, \$9,740 OBO. Salem, OR 971-600-3506

216 Vans



2012 Ford Econoline E-450, we have 5 used buses to choose from, great for a tour bus or maybe for a weekend / overnighter, these are airport style, 1 has wheelchair lift, \$19,995. Portland, OR. 503-777-4445

POWER FLEET & COMMERCIAL SALES
MEDIUM DUTY DEALER

2021 Chevrolet Silverado 3500HD 4WD Dump Body
Stock #24516

Call for your business preferred price!

Jim Church 503-910-7784
Delana Johnson 503-769-7100
Brian Heinrich 503-504-3629
Ryan Church 503-877-7102



CHEVROLET BUSINESS ELITE
POWER FLEET - COMMERCIAL
WWW.POWERAUTOGROUP.COM
503-769-7100

LINE CLASSIFIEDS
Call Toll-Free
1-800-882-6789
FAX: (503) 370-4383
Deadline Wed. at Noon
(Holidays may differ)
CapitalPress.com