

503 Real Estate Wanted



**Thurston Conservation District Request for Proposals for New Location**

The Thurston Conservation District (TCD) invites the submission of proposals for property to accommodate our new Conservation and Education Center in Thurston County, Washington.

TCD has committed to locating and engaging in securing land by 2024 for the development of its Conservation Education Center. The District solicits proposals from private, nonprofit, or public organizations interested in selling, leasing to own, or leasing property for the development of a Conservation & Education Center (CEC) to be located in Thurston County, WA. The proposed property offering must be usable for the minimum CEC requirements described in the RFP. To learn more about TCD, view the full RFP, and see submission instructions, please visit our website: [thurstoncd.com](http://thurstoncd.com)

TCD is a local non-regulatory subdivision of state government, which matches local natural resource concerns and needs with applicable technical assistance and financial resources to solve on-the-ground conservation issues with proven effective conservation practices.

RFP Contact: Susan Shelton  
Finance & Administrative Mgr, Thurston Conservation District  
[sshelton@thurstoncd.com](mailto:sshelton@thurstoncd.com)

**A picture is worth a 1,000 words**

Add a full color photo to your print and online ad.

**Capital Press**  
800-882-6789  
CapitalPress.com

516 Lots & Acreage

(2) Two Acre lots in Christmas Valley, OR. City water and electric close by. \$20,000 per lot 541-297-1451

525 Commercial Prop-



**FOR SALE Commercial Building NATIONAL TENANT AAA Corner Location, Downtown Albany, OR.**  
Asking \$650,000.  
Owner/ Broker  
541-754-7314

**You can benefit today from the strength of our newspaper and multimedia products and services.**

**Get the latest agricultural news.**

**Advertise to our large northwest subscriber base.**



**SUBSCRIBE TODAY!**  
Don't miss another issue.

**Capital Press**  
1-800-781-3214  
CapitalPress.com

540 Recreational

**PUBLISHER'S NOTICE**  
All real estate advertising in this newspaper is subject to the Fair Housing Act which makes it illegal to advertise "any preference, limitation or discrimination based on race, color, religion, sex, handicap, familial status or national origin, or any intention to make any such preference, limitation or discrimination." Familial status includes children under the age of 18 living with parents or legal custodians, pregnant women and people securing custody of children under 18.  
This newspaper will not knowingly accept any advertising for real estate which is in violation of the law. Our readers are hereby informed that all dwellings advertised in this newspaper are available on an equal opportunity basis. To complain of discrimination call HUD toll-free at 1-800-669-9777. The toll-free number for the hearing impaired is 1-800-927-9275.



**546 Rentals, Leases**

**Raspberry Acreage for Lease:** 23 fenced acres in Sandy, OR, with established raspberry plants, posts and wires. Will need pruning and tying. Lease amount negotiable. All profits to lessee. 360-903-4374, 503-245-3822

FOR LEASE

**Vegetable Processing Facility and 2 Storage Buildings** Hermiston Oregon. Processing Facility approximately 58,000 sq. ft. with office, lunch room, receiving area, packing room, two large cold rooms, shop/ parts room, staging room, shipping/ loading dock for three (3) trucks, scales); 2 Storage Facilities (30,000 sq. ft. facility with dehumidification; 60,000 sq. ft. facility with computerized refrigeration and dehumidifiers), private railroad spurs for transportation, water rights (well), septic, electricity, water lagoon for waste water. Will possibly rent processing facility and storage facilities separately. Contact Larry Blunck at 503-656-1654 or [larry@bluncklaw.com](mailto:larry@bluncklaw.com)

**Line Classifieds Call Toll-Free 1-800-882-6789**  
FAX: (503) 370-4383  
CapitalPress.com

558 Ranchettes



Big 5 Bedroom/ 2 Bath updated home in Oakridge, OR. 2.82 partially timbered acres. Fireplace, huge bonus room upstairs and loads of storage. 2 barns. Close to recreational activities, \$579,900. Ryan Yoss, Yoss Team Real Estate 5 4 1 - 3 3 7 - 6 6 0 7 [www.yossteam-realestate.com](http://www.yossteam-realestate.com)

561 Ranches



1201 Acre "Cole Ranch": 80 acre center pivot irrigation with 800 Acre feet of water rights from the Sinking Creek Aquifer included. Multiple Hay meadows. 4 bed, 1 bath main house that has been remodeled and a 3 bed, 1 bath bunkhouse. Shop and barn with corrals and typical outbuildings. Nearly surrounded by Public grounds. The BLM grounds could be leased for additional cattle capacity. 2 artesian wells and many springs abound on the property. Ranch is located at the Headwaters of Lake Creek with seasonal creeks and ponds. Historical Cattle Ranch area and home of the famous "Tracy Rock" Tons of wildlife in the area including Deer, Elk, Game Birds. Secluded down a 1+ mile private drive and it would make a great Hunting Club. 30 min to Lake Roosevelt. 3.5 Million. Call Rick Sawyer 5 0 9 - 6 6 0 - 0 6 1 0 . [www.katzrealtyinc.com](http://www.katzrealtyinc.com).

KNIFE LAND

Ranches near Enterprise, Oregon, with cattle grazing, timber, and recreation.

**Sale Pending**  
4,649± Acres - \$4,649,500

**Sale Pending**  
3,924± Acres - \$3,924,000

**Sale Pending**  
1,198± Acres - \$1,438,260

More ranches, farms, and land available. Buying or Selling? Call today!

208.345.3163 [knipland.com](http://knipland.com)

561 Ranches

**for RANCHES & FARMS call Crater Lake Realty, Inc.**  
Linda L. Long, Broker  
541-891-5562  
Chiloquin, OR  
[linda@craterlakerealtyinc.com](mailto:linda@craterlakerealtyinc.com) • [craterlakerealtyinc.com](http://craterlakerealtyinc.com)

**IDAHO RANCHES & FARMS**

**WE SPECIALIZE IN TAX-DEFERRED EXCHANGES**

**Robert Jones Realty**

**ALC ACCREDITED LAND CONSULTANT**

**Bob Jones, Broker**  
208-308-6060

**Mark Jones, Assoc. Broker**  
208-308-3030  
208-733-0404  
1766 Addison Avenue E, Twin Falls, ID 83301  
[www.RJREALTY.com](http://www.RJREALTY.com)

561 Ranches

**Don't look any further! Sell or buy what you need in Capital Press!**

**1-800-882-6789**  
FAX (503) 370-4383

AD DEADLINES:  
Classified Display Ads, Weds. @ 10AM  
Classified Line Ads, Weds. @ Noon  
CapitalPress.com

**THIS AD SPACE could be yours!**

**1-800-882-6789**  
or FAX 503-370-4383  
CapitalPress.com

564 Farms

**DECKER'S DEALS!**

Everett Decker, Licensed Realtor  
John L. Scott-Redmond, OR  
541-548-1712 or 541-480-8185  
email: [everett@johnscott.com](mailto:everett@johnscott.com)

Klamath County Ranch. 3178 Acres of Pasture land. Irrigated Pasture, Dryland Pasture and timbered Pasture. 4. Perimeter fenced. Flood Irrigated. County shows a 700 Square foot, 2 bedroom, 1 bath home. Corrals. Buyers to do their own due diligence. \$10,000,000.00

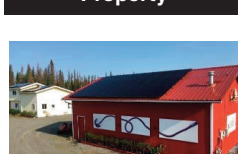
Crook County Custom Home on 5 Acres. 5554 Square feet, 3 bedroom, 2.5 Bathrooms. All the features plus an outdoor kitchen area, 3 heat pumps, 2 hot water heaters, and an Extra Large Game room with a 945 sq. ft attached garage. Tile roof, gutters and over 13,000 Square feet of Paved Drive way. Private well, Gated Entry, Cascade and Powell Butte view and a private location. Bargain Basement priced for a quick sale at \$1,200,000.00.

Crooked River Ranch. 1995 Double wide on 6.02 Acres. 1620 Square feet with 3 bedrooms, 2 bathrooms some updating. 30 x 60 Shop with Concrete floor and electricity. Wheel Chair accessible Ramp and vacant. \$529,000.00.

564 Farms

**CENTRAL OREGON FARM,** Powell Butte, OR. 97 Acres, 56 Acres under Pivot planted to Orchard Grass. Beautiful Log Home, plus Rental Home. Big Views Cascade Mtns. Hay Barn 120x60, Large Shop, Large Covered Equipment Barn. Large Green House. Lots of possibilities for good income. \$1,400,000 MLS#220135899, Call Vicci Bowen, REALTY PROS, LLC. 541-410-9730

570 Orchard & Vineyard Property



4 acre berry farm/ winery, home, tasting room, shop, barn, solar, greenhouses MLS 2110986 Fred Braun \$629,000. Soldotna, AK. 9 0 7 - 2 5 2 - 8 3 7 5 <https://www.jackwhite.com/details.php?mls=97&mlsid=2110986>. brauncom@ptialaska.net.

**Looking for a farm or ranch?**

VISIT **FarmSeller.com**

579 Acreage

**CHEHALIS, WA**  
20 Acs. of land and timber. Subdivided in (4) 5-acre tracts with building sites after timber is removed. Close in Chehalis. Adna or Chehalis schools. \$275,000. By owner. (360)736-0836

651 Help Wanted

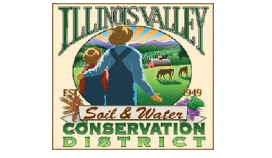


**Ag Manager:** Family farm looking to hire a manager to help out in the field during the summer and the processing shed during the winter months. Full time position which would include supervising and hiring labor during seed cutting, planting, harvest, and shed running. Full time position with pay depending on experience. Malin, OR. (541)891-8615

Oregon State University College of Agricultural Sciences and the OSU Extension Service are seeking applications for a full-time, 12 month, fixed term Extension Field Crops Assistant Professor of Practice position, to be based at the OSU Extension Marion County Office in Salem, Oregon. This position will cover Marion and Clackamas counties. To review posting and apply, please visit <https://jobs.oregonstate.edu/postings/117237>. Posting #P05434UF. Closing date: 6/7/2022. OSU is an AA/EOE/Vets/Disabled.



John I. Haas, Inc. is looking for an Agronomist for our Toppenish, WA. farm. In short, this position is responsible for agronomy focused research projects, conducting trials and studies focused on Haas farm production, and developing fertilizer and pesticide programs on Haas farms with a focus on sustainable farming practices. For more information and to apply, visit [www.johnihaas.com/careers](http://www.johnihaas.com/careers).



The Illinois Valley SWCD is offering an incredible career opportunity in gorgeous SW Oregon. An energetic, qualified professional will actively engage with and motivate community landowners and stakeholders in planning, developing, and implementing land stewardship programs and projects. Position is 8+ FTE with a generous benefits package. For the full job description, visit <https://ivswcd.specialdistrict.org/>

The IVSWCD is an equal opportunity employer. Cave Junction, OR. 541-592-3731

**Buying or Selling**

Capital Press is here to help you!  
1-800-882-6789  
or FAX 503-370-4383  
CapitalPress.com

564 Farms

564 Farms

564 Farms

564 Farms

564 Farms

564 Farms

564 Farms

564 Farms

**FarmSeller FARMSELLER.COM Find the land, farms, and ranches you're looking for**

**DIRECTORY OF PREMIUM AGENCY MEMBERS**

 Brook Havens Cascade Sotheby's International Realty 541-604-0788	 Pam Mayo-Phillips Cascade Sotheby's International Realty 541-480-1513	 Linda Long Crater Lake Realty Chiloquin, OR 541-783-2759	 Jerry Franklin Eastern Oregon Realty John Day, OR 541-575-2121
 Curt Blackburn Jett Blackburn Real Estate Burns, OR 541-573-7206	 Tim Cobb Farmland Company Spokane, WA 509-624-4408	 Robert Bacon Fischer Nicholas Realty Klamath, OR 541-545-1510	 Stacey Moyles Century 21 Showcase Realtors, Inc. Klamath Falls, OR 541-882-2121
 Lisa Johnson Horsepower Real Estate Junction City, OR 541-510-4601	 Julie Mansfield-Smith Mossy Oak Properties Copper Creek Land Company Kimberly, OR 541-519-6891	 John Lee Lee Real Estate Aumville, OR 503-245-9090	 Paul Terjeson Oregon Farm Brokers Corvallis, OR 503-999-6777
 Steve Helms Keller Williams Farm & Ranch Albany, OR 541-979-0118	 Curtis Hitchcock Knipe Land Company Boise, ID 208-866-2825	 Janey Knipe Knipe Land Company Boise, ID 208-345-3163	 John Knipe Knipe Land Company Boise, ID 208-345-3163
 Tom Gill Knipe Land Company Mountain Home, ID 208-860-0776	 Jake Polvi POLVI Bend, OR 541-410-3050	 John Collins Ranch-N-Home Realty La Grande, OR 541-963-5450	 Judy Willis Real Estate Associates Joseph, OR 541-432-4060
 Ken Wick Real Estate Associates Joseph, OR 541-432-4060	 Mark Jones Robert Jones Realty Twin Falls, ID 208-733-0404	 Kirk Makin Ruby Peak Realty Joseph, OR 541-432-3131	
 Claresse O'Connor Timberline Realty Joseph, OR 541-432-1234	 Jim Whitney Whitney Land Company Pendleton, OR 541-278-4444	 Todd Longgood Whitney Land Company Pendleton, OR 541-278-4444	 Robert Carnahan Artisan Real Estate Associates Dufur, OR 503-313-0419
 Paul Bottari Bottari & Associates Realty Inc. Wells, NV 775-752-3040			

**IDAHO**

**BOISE** KNIFE LAND 208-345-3163

**POCATELLO** INTERMOUNTAIN LAND EXCHANGE, INC. 208-232-8306

**STAR** FLINDERS REALTY & EXCHANGE 208-334-3840

**TWIN FALLS** ROBERT JONES REALTY INC. 208-733-0404

**MONTANA**

**BILLINGS** ROCKY MTN. RANCH REAL ESTATE 406-259-6666

**NEVADA**

**WELLS** BOTTARI & ASSOCIATES REALTY INC. 775-752-3040

**OREGON**

**ALBANY** KELLER WILLIAMS FARM & RANCH 541-979-0118

**AUMSVILLE** LEE REAL ESTATE 503-245-9090

**BAKER CITY** AGRILANDS REAL ESTATE 541-853-1212

INTERMOUNTAIN REALTY 541-523-4434

**BEND** CASCADE SOTHEBY'S INTERNATIONAL REALTY (PAM MAYO AND BROOK HAVENS) 541-923-1376

COLDWELL BANKER BAIN 541-280-4372

FAY RANCHES 541-419-0770

POLVI 541-410-3050

**BONANZA** FISHER NICHOLSON REALTY, LLC 541-545-1510

**BURNS** JETT BLACKBURN REAL ESTATE 541-573-7206

**CHILOQUIN** CRATER LAKE REALTY 541-783-2759

**CORVALLIS** OREGON FARM BROKERS 503-999-6777

**DAYVILLE** DUKE WARNER REALTY 541-987-2363

**DUFUR** ARTISAN REAL ESTATE ASSOCIATES 503-313-0419

**JEFFERSON** TERI MCKENZIE REAL ESTATE 503-302-9901

**JOHN DAY** EASTERN OREGON REALTY 541-575-2121

**JOSEPH** REAL ESTATE ASSOCIATES 541-432-4060

TIMBERLINE REALTY 541-432-1234

RUBY PEAK REALTY 541-432-3131

**JUNCTION CITY** HORSEPOWER REAL ESTATE 541-510-4601

**KIMBERLY** MOSSY OAK PROPERTIES CUPPER CREEK LAND COMPANY 541-519-6891

**KLAMATH FALLS** CENTURY 21 SHOWCASE REALTORS, INC. 541-882-2121

**LA GRANDE** RANCH-N-HOME REALTY 541-963-5450

**LAKEVIEW** HIGH COUNTRY REAL ESTATE 541-417-0250

**MEDICAL SPRINGS** AGRILANDS REAL ESTATE 541-853-1212

**NORTH BEND** CADWELL REALTY GROUP 541-740-9854

RE/MAX SOUTH COAST 541-290-1850

**ONTARIO** TOM PHILLIPS AGENCY 541-889-8401

**PENDLETON** WHITNEY LAND CO. 541-278-4444

**SALEM** AGRI-BUSINESS REAL ESTATE 503-371-6409

**WILSONVILLE** WOLF PROPERTIES NW 503-682-1789

**TEXAS**

DIMMITT SCOTT LAND CO. 800-933-9698

**WASHINGTON**

**BURLINGTON** RE/MAX TERRITORY NW 360-755-9494

**CHEHALIS** CENTURY 21 LUND REALTORS 360-748-8619

**SPOKANE** FARMLAND COMPANY 509-624-4408

**TOLEDO** RE/MAX PREMIER GROUP 360-520-4810