

923 Farm Equipment



**Portable Toilet Trailers**  
**GGAP Compliant**  
 Single or Double Trailers  
 B and L Fabrication, LLC  
 503-308-1870  
 www.BNLFAB.com  
 Salem, OR.



**2006 Terra Gator 8104:**  
 10 ton box, plus seed box,  
 Trimble GPS with au-  
 tosteer, new front tires,  
 rear tires 60 to 70%, \$40,  
 000. LOVELOCK, NV  
 (775)422-7733

**BEST SELLERS** "...Had great  
 results and will definitely use  
 Capital Press again."  
 Len St. Claire,  
 Horseshoe Loop, Lebanon, OR  
 Call 1-800-882-6789 to advertise.

**TJ EQUIPMENT LLC**  
 Ferndale, WA  
 (360) 815-1597



**2017 Marani 90GT40 ir-**  
**rigation reel 3" x 1320'**  
**hose, gun cart, diesel**  
**motor, like new...\$24,000**



**2000 Bauer TX85**  
**Plus irrigation reel**  
**3.5" x 985' hose, gun**  
**cart.....\$13,000**



**\*PACKAGE DEAL\***  
 Includes New Hol-  
 land Hayliner 315  
 small square baler,  
 AgWay AC800 bale  
 accumulator & Ag-  
 Way AC8006G bale  
 handler, over \$5,000  
 spent this winter at  
 local dealer....\$12,500



**Claas Liner 1550**  
**Twin rake hydraulic**  
**fold, 24.5" working**  
**width.....\$9,500**

Find lots more  
 equipment at:  
 www.TJEquipment  
 LLC.com

923 Farm Equipment

**Limited Models  
 in Stock!**

**Branson  
 TRACTORS**  
**RUGGED, RELIABLE, RED...  
 AND THAT'S NO BULL!!!**

**NEW 4x4 BRANSON 2515H**  
**2100 Loader Lift Capacity at the Pins**  
**Tractor with Loader...\$23,900 OR**  
**Tractor Loader Backhoe w/ Thumb.....\$32,500**

**BONNEY'S**  
 www.BonneysAg.com

**81600 N. Hwy. 395**  
**Hermiston, OR**  
**Open Monday - Saturday**  
**541-922-1213**

**D&S TIRES, INC**  
 26884 Pearl Rd., Parma, ID 83660 • (208) 635-0700

**GO GREEN - SAVE THOUSANDS OF \$\$\$**  
**LIKE OUR MANY SATISFIED CUSTOMERS!! RELUG**  
**YOUR TRACK & WHEELS. PULL THEM OFF EARLY**  
**& SAVE YOUR BELT.**

**STOP!**

Don't Throw Away Perfectly Good Track  
 Because It's Missing Guide Blocks. Don't  
 Waste Money! We Can Repair Your Guide  
 Blocks for Much Cheaper Than New.  
**CALL TO GET YOUR GUIDE BLOCKS**  
**& TRACK REPAIRED TODAY!**

**EXCHANGE  
 DRIVES,  
 IDLERS AND  
 MIDROLLERS**

**STEEL BELTED RADIAL  
 RETREAD IRRIGATION  
 TIRES ON HAND!**

**D&S TIRES INC.**  
 Celebrating Our 51<sup>st</sup> Year In The Tire Business 1971-2022

**1-800-882-6789**  
 Classified Line Ads Get Results - CapitalPress.com

923 Farm Equipment

**EZEE-ON Disc parts for**  
**sale. Bearings, spools,**  
**springs. Delco, ID**  
**(208)431-5310**



**John Deere 3970 forage**  
**harvester. 7 foot grass**  
**head , electric controls,**  
**iron guard metal alert,**  
**ready to go. \$8500**  
**Oakville, WA. 301-730-**  
**0906**

**John Deere 9660 WTS**  
**with pickup header. Low**  
**hours. Great shape. Field**  
**ready, \$80,000 OBO.**  
**John Deere 9510 SH with**  
**pickup header and wheat**  
**header. Low hours. Field**  
**ready, \$62,000 OBO.**  
**John Deere 216 wheat**  
**headers 2 available. 1-**  
**\$2500; 1- \$5500. Sheri-**  
**dan, OR. Travis Grauer**  
**503-434-7692**

**HOT!**  
**SAVINGS**  
**at Capital Press**  
**1-800-882-6789**  
 CapitalPress.com

**Farland  
 Tractor Supply**  
 Tangent, Oregon

**New, Used, and  
 Rebuilt Tractor Parts**

**877-928-1646**  
 541-928-1646  
 32427 Old Hwy. 34  
 Tangent, OR 97389

923 Farm Equipment

**WANTED**

**WANTED- Barn Owl Pel-**  
**lets for educational use.**  
**Top price paid since 1992.**  
**Mountain Home Biologi-**  
**cal 800-958-9629**  
**mtnhome@gorge.net**  
**Nesting Boxes Available**  
**for Sale.**

**John Deere 5065E Tractor:**  
 John Deere 5420  
 Tractor, John Deere 260  
 disc mower, New Holland  
 570 baler, New Holland  
 side delivery rake, tedder  
 rake. 3 brush hogs, 5 bale  
 conveyors. Washougal,  
 WA 360-835-5329

**run ahead of the pack**

**KIOTI**

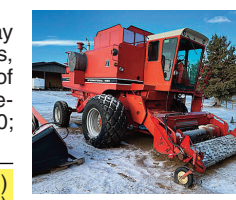
923 Farm Equipment

**Huge Moving Sale!**  
 Bale wagons, spray  
 coupe, balers, hay rakes,  
 plows, discs. Hundreds of  
 items. Make Offer. Rickre-  
 all, OR 503-838-3740;  
 503-383-6722

**Byron Harvesters: (2)**  
**8400 corn pickers, (2)**  
**8600 bean pickers. All**  
**run and work. Lots of**  
**parts. Make offer. Forest**  
**Grove, OR. 503-310-**  
**2524**

**Kewanee 20ft wide heavy**  
**offset disk, \$8000. 892**  
**New Holland forage har-**  
**vester with windrow pick**  
**up, \$2500. 20ft Bearcat**  
**Rotary Cutter, 20-27,**  
**very good condition,**  
**\$12,500 Independence,**  
**OR. 503-851-9601**

923 Farm Equipment



**1480 Case IH Combine.**  
 Excellent condition. Very  
 straight. Low hours.  
 Comes with pickup  
 header. Grain header  
 with cart also available.  
 \$10,000. Bend, OR.  
 (503)970-3853

**Capital Press  
 CLASSIFIEDS**  
**1-800-882-6789**  
**CapitalPress.com**



**FISCHER MILL SUPPLY, INC.**  
 EST. 1889 503-631-3411  
 OREGON CITY, OR

**NEW KIOTI TRACTORS**

NS6010H, 58 hp, 4x4 ROPS, 3-R HST, Loader w/ 72" Q/A BKT.....CALL  
 RX7320PB 73 hp, 4x4, ROPS, 12x12, Loader 82" Q/A BKT.....CALL

VISIT [FISCHERMILLSUPPLY.COM](http://FISCHERMILLSUPPLY.COM) TO SEE ALL INVENTORY

USED TRACTORS	
IH274, 2WD, high clearance w/ Maschio tiller.....	\$9,750
NH TS100 2wd Cab Tractor w/ LDR.....	\$30,000
MF 1547 Tractor, 4x4 w/ LDR.....	CALL
USED HAY EQUIPMENT	
Case Side Delivery Rake.....	\$2,950
Hesston 1071 Haybine, 7' cut, clean .....	\$5,250
Hesston 1006 6-disc mower.....	CALL
Kuhn GSR24 Tedder/Rake 3pt.....	\$3,250
MISCELLANEOUS	
Link-Belt 80 Excavator, 2 Bkts, Thumb.....	CALL
Edwards 3pt Hydraulic Forklift.....	\$2,800
Montana Air Blast Sprayer 110gal.....	\$4,950
Aerway AW050S 3pt. Aerator, 60".....	\$2,950
Graham Chisel Plow 9-shank, Pull Type.....	\$3,750
IH Finish Disk, 10', Tandem.....	\$4,150
John Deere 5-Shank Ripper.....	\$3,750
John Deere 4600A 5-bm. R/O plow.....	\$5,950
Glencoe 3pt Cultivator 8 Shank.....	\$1,350
Lely Walking Shank 3pt Chisel Plow.....	\$3,150
Porters Welding 3pt Orchard Float, 8', DEMO.....	\$5,700
Titan 1810P Rotary Mower, 10' pull.....	\$7,200
Kverneland KDB07 Bale Processor.....	\$7,000
New Rankin 327 V-Ripper, 3 shank.....	\$3,475
New H&S Mfg. 20' Feeder on Rubber.....	\$6,950

**GK MACHINE INC**

**Repair, Refurbish & Rebuilds**

**Before** **After**

- Ag equipment repair
- Rebuilds/modifications
- Fuel systems
- Hydraulics
- Re-engineered parts
- Implements & more!

**GK MACHINE \* www.GKRepair.com \* 503-678-5525**

**FENDT**

**GROW WITH US!**

**We're looking to add experienced  
 service technicians to our team with  
 the following incentives:**

**Sign-on bonus** **Moving bonus up to**  
**\$2,500** **\$2,500**

*(terms and conditions apply)*

**We're also hiring for secretarial, sales and parts positions.**

**Apply online today at [www.robbsfarmeq.com](http://www.robbsfarmeq.com)**

**Robbins  
 Equipment**

**BAKER CITY** 800-743-5924  
**BURNS** 877-208-1112  
**LA GRANDE** 877-743-5924  
**CHRISTMAS VALLEY** 541-576-2160

**ZERO%**  
**FINANCING\***  
**FOR 48 MONTHS**

**ST 45 Track Loader**

**EZ 53  
 Excavator**

**WL 34 Wheel Loader**

**WACKER  
 NEUSON**  
*all it takes!*

\*50 Down, 0% A.P.R. financing for up to 48 months on purchases of select new Wacker Neuson Compact Equipment including: Compact Track Loaders, Skid Steers and excavators. All wheel loaders start at 2.99% APR for up to 60 months and 1.99% for telehandlers from participating dealers' in-stock inventory is available to qualified purchasers through Wacker Neuson Finance, subject to credit approval, equipment finance agreement, no advance payments. Some exceptions apply. One-time origination fee applies. Applicable taxes not included. Example: 60 monthly payments of \$16.67 per amount \$1,000 financed at 0% APR or 60 monthly payments of \$17.52 per \$1,000 financed at 1.99% APR. Offer expires 3/31/22.

**USED Equipment online at [www.rickfarm.com](http://www.rickfarm.com)**

**RICKREALL**  
 Since 1947

**Farm Supply**

**Text/Voice 503-623-2365**

**[www.rickfarm.com](http://www.rickfarm.com)**  
 130 Main St. Rickreall, OR 97371