

887 Irrigation Equip.

887 Irrigation Equip.

887 Irrigation Equip.

887 Irrigation Equip-

899 Heavy & Industrial Equipment

899 Heavy & Industrial Equipment

899 Heavy & Industrial Equipment

911 Hay Equipment

**PASSION IN IRRIGATION**

T-L Pivots  
Drip Tape & Supplies  
Drip Equipment  
Drip Tape Recycling

**AquaTech**  
IRRIGATION SUPPLY LLC  
PASCO, WA

509-547-3800

**WATER MASTER SERIES AND EVERGREEN**

**SUPERIOR SERVICE & DESIGN**

- All your needs for irrigation parts service
- We build custom equipment for your special needs
- Hose replacements & fusion repairs
- Transport Tanks • Rental Returns & Used Equipment
- Structural and steel available for purchase

**VALLEY WORKMAN**

**Truck Equipment**

- Full Service
- Alterations
- Dump Bodies • Hoists
- Farmbeds • Flatbeds

**VALLEY FAB**  
CORP  
10910 Portland Rd. NE • Brooks, OR  
Call: 503-792-3739 • Fax: 503-792-3738

**CALL BY 3PM**  
**MON - FRI**  
**AND GET**  
**YOUR**  
**LINE AD**  
**ONLINE IN**  
**24 HOURS!**  
(On approval)

Your line ad will also run in the next available print edition of Capital Press.

**Capital Press**  
800-882-6789  
CapitalPress.com

**WaterTec**  
IRRIGATION

Idrofoglia G1D  
2.5" x 65ft. Hose Reel  
Komet Senior Sprinkler  
40-130 GPM  
\$12,549

360-393-4923  
Lynden, WA  
www.watertecna.com

**A picture is worth a 1,000 words**

Add a full color photo to your print and online ad today.

**Capital Press**  
800-882-6789  
CapitalPress.com

**Capital Press**  
EMPOWERING PRODUCERS OF FOOD & FIBER

**AN AG ESSENTIAL**

Our Mission: to provide the Ag Community with timely, thorough news plus advertising that enriches our reader's pocketbooks and lives.

Now more **ESSENTIAL** than ever!

CapitalPress.com  
marketplace.capitalpress.com  
Farmseller.com  
Twitter  
Facebook

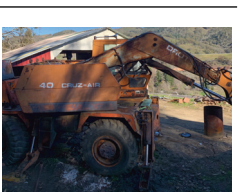
**Miss a week... miss a GREAT DEAL!**

400 PLUS 4in. Wade Rain aluminum pipe complete with sprinklers and risers, \$80 each, choice or \$60 each, all. Including miscellaneous fittings, all 4in. Independence, OR. 503-851-9601



2004 Gorman Rupp 4 inch self priming pump. Deutz 3 cylinder. Diesel, towable with 1242 ACTUAL HOURS. Former Municipal machine that is in like new condition. \$9900. Twin Falls, ID. Call 208-613-0050

**893 Logging Equip-**



Wanted: 23.1 x 26 Skidder tires. 503-755-2409

**894 Sawmill Equipment**



Busy Beaver 100 Wood Chipper, hydraulic feed, 4 cylinder Wisconsin motor, 2 nice disc, 2 inch ball hitch, \$4995. Adams, OR. 541-969-9087

**896 Forklifts**



International 4500B Forklift, diesel engine, \$4500. Salem, OR. 503-559-7980

**899 Heavy & Industrial Equipment**



Case 721B Wheel Loader, 4 in 1 Bucket, EROPS, Low Hours 3,936, Asking \$49,950.00, OR. Call Pepe: 503-544-3232; Call Pat: 503-407-9062

Looking for a farm or ranch? VISIT **FarmSeller.com**

**QUALITY USED EQUIPMENT & ATTACHMENTS**



1990 Caterpillar D3C Dozer - \$25,500  
FEATURES:  
• New Steering Clutches, LH & RH  
• 6 Way Blade  
• Rear and Side Screens  
• Rock Guards  
SPECIFICATIONS:  
• Engine Hours: 3,923  
• Horsepower: 71



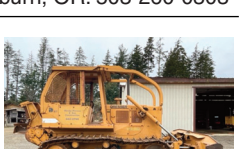
2016 Bobcat E26 Mini Excavator  
FEATURES:  
• 1200 Hours  
• Blade  
• Auxiliary Hydraulics  
SPECIFICATIONS:  
• Operating Weight: 5666 lbs.  
• HP: 25  
Call Cameron Noble or Eric Hunt  
CENTRAL POINT, OR  
855-423-1200  
www.amtractor.com



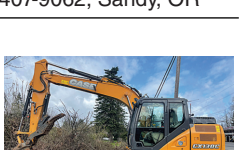
1972 CAT 966C Wheel Loader, CAT 3306 Engine showing 11,100 Hours, 4 Yard Bucket, Runs Great, \$26,500. Woodburn, OR. 503-260-0303



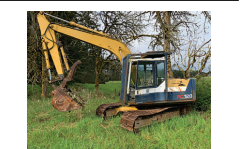
1994 CAT Challenger 75C Rubber Track Tractor, 325 HP, Enclosed Cab, Runs Great, \$39,500. Woodburn, OR. 503-260-0303



Dresser TD12C Dozer, 6 Way Blade, Hyster Winch, Original Low Hour Machine Only 2110, Asking \$59,950. Call Pepe: 503-544-3232; Call Pat: 503-407-9062, Sandy, OR



2015 Case CX130C Excavator, Hydraulic Thumb, Hydraulic Coupler, Isuzu Diesel, Dig Bucket, 4728 Hours, Asking \$89,500. Sandy, OR. Call Pepe: 503-544-3232; Call Pat: 503-407-9062



2013 John Deere 60D Excavator, 2776 Hours, 18" 24" 48" Buckets, Rubber Tracks, Blade, Asking \$62,500. Sandy, OR. Call Pepe: 503-544-3232; Call Pat: 503-407-9062



1990 Komatsu PC120-5 Excavator, clean out bucket, tooth bucket with thumb. Great for the farm or small acreage, \$26,500. Chehalis, WA. 360-520-5347



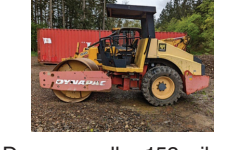
1975 CAT Excavator E120B Pro Force: new tracks, 3ft bucket, 18in clip on trenching bucket, thumb, protective cage, \$24,500 OBO. Bainbridge Island, WA. 253-691-9891

**CASE INDUSTRIAL PARTS**  
We sell genuine, after market, and used CASE parts at discount prices nationwide.  
Call For Free Catalog.  
**CENTRAL EQUIPMENT**  
AFTER MARKET & USED PARTS  
Medford, OR  
(888) 593-8749

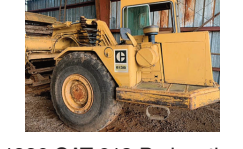
**902 Farm Equip. Parts**

**902 Farm Equip. Parts**

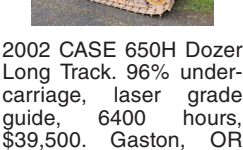
**REPLACEMENT DECAL SETS**  
Construction, Forestry & Ag Equipment, Fast, Knowledgeable, Reliable Service. 215-536-5339 email: info@CustomServicesCompany.com  
Thousands of sets, Old & New, in our digital inventory.  
**www.QuipCal.com**



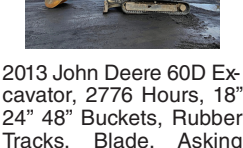
Dynapac roller 152: vibratory 60in drum with sheets foot attachment, 950 hours, \$29,000. Albany, OR 541-740-7239



2005 Komatsu PC270LC-7L Excavator, Hydraulic Thumb, 54" Dig Bucket, Asking \$54,950. Sandy, OR. Call Pepe: 503-544-3232; Call Pat: 503-407-9062



1980 CAT 613-B elevating scraper. Work ready, good condition, \$29,500 Salem, OR. 503-362-3055



2002 CASE 650H Dozer Long Track. 96% undercarriage, laser grade guide, 6400 hours, \$39,500. Gaston, OR 503-789-3726



2013 John Deere 60D Excavator, 2776 Hours, 18" 24" 48" Buckets, Rubber Tracks, Blade, Asking \$62,500. Sandy, OR. Call Pepe: 503-544-3232; Call Pat: 503-407-9062



1975 CAT Excavator E120B Pro Force: new tracks, 3ft bucket, 18in clip on trenching bucket, thumb, protective cage, \$24,500 OBO. Bainbridge Island, WA. 253-691-9891

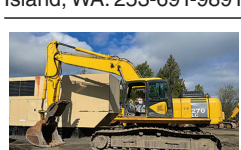
**Case Industrial Parts**  
We sell genuine, after market, and used CASE parts at discount prices nationwide.  
Call For Free Catalog.  
**CENTRAL EQUIPMENT**  
AFTER MARKET & USED PARTS  
Medford, OR  
(888) 593-8749

**902 Farm Equip. Parts**

**902 Farm Equip. Parts**



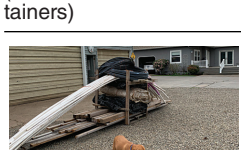
WANTED: John Deere round baler, right hand rake, 30 series John Deere tractor. Port Angeles, WA. 360-808-1484



Freeman 370 Baler: Like new, 27,000 bales, recent \$8,000 overhaul, new paint, hydro. \$20,000 OBO. Junction City, OR. 541-998-2429



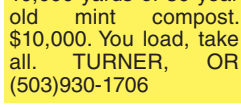
HAY EQUIPMENT: Hay Squeezer/ dozer 4x4 combo, diesel, on tires, \$18,500. Deutz Tedder, \$1,400. Ford Rollover Plow, \$2,800. John Deere Land plane, \$3,700. Single Darf Rake, \$900. John Deere Seeder, \$800. Small Ripper. Disc. Packer. Klamath Falls, Oregon. John 541-892-1948



2005 Krone Baler: under 30,000 bales, 1290HDP, \$50,000. Willing to carry contract. Jefferson, OR. 503-932-0012



1085 Bale Wagon: ready to work. Owned since 1997, \$45,000. (2) 370 Freeman Balers, ready to work, \$15,000 each. Oregon 541-953-3608



Krone Belima F125 Round Baler: twine only, fixed chamber, 4x4 bales, 500 bales since new, \$21,000 OBO. Eatonville, WA. Calls Only 360-832-6313



#1 Balewagons: Buy, Sell, New Holland 2&3 wide self-propelled, pull-type models, parts, tires, manuals. Caldwell, ID. 208-880-2889  
www.balewagon.com

**New And Used Parts:** for all models New Holland bale wagons. Largest Inventory in North America. Sod Busters Sales, Polson, MT. 877-735-2108 or 406-883-2118

**Large Supply of Rebuilt New Holland Bale Wagons:** Also buying New Holland bale wagons. Sod Busters Sales, Polson, MT. 406-883-2118

**10,000 yards of 30 year old mint compost.** \$10,000. You load, take all. TURNER, OR (503)930-1706

**FRESH SAWDUST:** Consistently fair pricing. 9 Unit Loads Now Available Forest-Grove, OR. For pricing call 503-849-0216

**1-800-882-6789**  
CapitalPress.com

**911 Hay Equipment**

Retirement Sale! 2016 New Holland Discbine 313 mower with rubber roller, \$32,000. Roto Grind grain grinder GG10 3 point mount, \$10,000. Alloway 4 row crop cultivator with shields, \$3,000. Four 10x300 bags, \$840 each. John Deere 7200 corn planter, 6 row, \$2,500. Trout Lake, WA. 509-637-4492

**1-800-882-6789**  
CapitalPress.com

**911 Hay Equipment**

Mower Conditioner: Kuhn Model FC352 Gyro, 11.5ft cut steel flails, equivalent to new model FC353, \$10,000 OBO ENUM-CLAW, WA (360)825-6548

(2) New Holland BB900 Balers: 1258 hours, 4 cylinder diesel, chambered, \$13,500. 1814 hours, diesel, chambered, \$13,500. Both in good condition. McArthur, CA. 530-949-0643

1431 New Holland haybine, needs some work. New Holland 169 6 basket tedder rake, field ready, \$5000/ both. TURNER, OR (503)930-1706

**IT'S HAY SEASON!**  
Check This Out!

New Holland BB900 baler. 2700 hours, good condition, new knotters. Asking \$8000. Serious inquiries only. Woodburn, OR. Call or text Greg 503-969-8705.

**IT'S SO EASY TO PLACE CAPITAL PRESS CLASSIFIED ADS... PHONE TOLL FREE 1-800-882-6789**

**RCO Baits**  
Gophers • Squirrels  
Voles • Moles  
Dealer Locator  
1-800-214-2248  
Harrisburg, OR 5272464-1

**887 Irrigation Equip-**

100HP Westinghouse 12ft draw irrigation pump, includes start up equipment, \$3900 OBO. Bellingham, WA. 360-734-2222



2015 Ernst Irrigation 110 Traveler: all components work, MaterMacc electronic control, \$20,000 OBO. Tillamook, OR. 503-812-5775

WANTED: Hose reel with booster pumps, minimum 1400 feet of hose, contact Carl Jensen Farms 503-873-4791



NEW IA Pivot Track Closer. Heavy Duty with adjustable cone discs. From 60" to 12" closing width. Hydraulic Depth Control water fill roller packer, \$5,495. MTC Sales Bend, OR. Scott: 541-815-2953 Visit: www.mtcsales.net \*\*\*Partner Dealers\*\*\*

**Aleman Equipment** Dutchess, Alberta, CAN. Jerry: 403-793-7341

**Equipment Finders** Twin Falls, ID Dave: 208-731-4040

**Vista Equipment** Hazen, NV. Jerry: 775-741-0688



Used T-L Irrigation Circle Parts for sale, in good shape used thru 2021. Includes tower spans, planetary gears, end gun etc. Located in Moses Lake WA. Call 509-669-0054

(40) Used Pivots: New listings coming. Engines, pumps. Garden Valley, ID. Call Mike at 208-420-1480, or see www.pivotsplus.com



REFURBISHED PUMPS AT A FRACTION OF THE COST OF NEW. (6) Cornell Marathon Electric, 15 to 75hp, 1760-3500 RPM's; (3) Berkeley Baldor Industrial Motor, 7.5 to 15hp, 3450 RPM's. Meridian, ID. 208-888-1376

**Farm Seller.com**  
AMERICA'S FARM AND RANCH DATABASE



Specializing in • Drip Irrigation • Filtration • Design  
598 Baseline, Cornelius, OR  
(503) 357-4217  
www.hpspipe.com  
CCB#120254



917 Orchard/Vineyard Equip.

917 Orchard/Vineyard Equip.

917 Orchard/Vineyard Equip.

917 Orchard/Vineyard Equip.

917 Orchard/Vineyard Equip.

917 Orchard/Vineyard Equip.

**GK Greenhouses - All Steel Construction**

**GK Greenhouses & Accessories:**

- Pre-engineered for easy set-up
- All steel siderails & base channel
- Fans, heaters & shutters in-stock!
- Poly covers and shade cloth
- All accessories for your greenhouse growing operation

**GK MACHINE DONALD OREGON 503-678-5525**  
**www.GKGreenhouse.com**