

354 Auction Sales 354 Auction Sales 354 Auction Sales 354 Auction Sales 354 Auction Sales 354 Auction Sales 354 Auction Sales 525 Commercial Prop-

Auction Sales co.

ONLINE AUCTION!

YAMHILL COUNTY HISTORICAL SOCIETY AUCTION
BIDDING OPENS FRIDAY 5/13 AT 5PM

.....

AUCTION STARTS TO CLOSE:
MAY 19TH AT 5PM

www.AUCTIONSALESCO.com | 541.296.1012

UNRESERVED - EVERYTHING SELLS TO THE HIGHEST BIDDER

public auction

COMPLETE VOLUNTARY LIQUIDATION - EVERYTHING MUST GO!

Glenwood Restaurant

BIDDING OPEN NOW - Auction Closes - Wednesday May 18th - 1:00PM

1340 Alder St. Eugene, OR. 97401 - Just off the U of O Campus

Onsite Item Preview Available by Appointment ONLY - May 16-17th 10-5PM

ONLINE ONLY AUCTION - No Live Bidding Available - See Website for Full Details

Standard 10% Buyers Premium Applies to All Purchases - Terms are Cash, Credit Cards or Pre-Approved Checks

PACIFIC INDUSTRIAL AUCTIONS and APPRAISALS

Jake Cheechov CAI, GPPA
Auctioneer / Appraiser

OFFICE: 541-305-7233
CELL: 541-913-7455
34570 Hwy. 58 Eugene OR. 97405

PIAuctioneers.com

ME **May Consignment Auction**
Online Only

Agricultural - Industrial - Construction- Surplus - Shop - More

Meridian Equipment Auction Co
5946 Guide Meridian,
Bellingham, WA 98226

2 Day Online Auction

Featuring- Pickups, Trucks, Tractors, Shop Tools, New Skid Steer Attachments, Containers and Much More

Meridianeq.hibid.com

Sale Conducted By Meridian Equipment
5946 Guide Meridian
Bellingham, WA 98226
WAL#0002165

ONLINE BIDDING Ends May 21&22 2022

MERIDIANEQ.COM 1-800-905-2141

CLASSIFIED ADS SELL!
Advertise Today!
1-800-882-6789 • CapitalPress.com

561 Ranches 561 Ranches 561 Ranches 561 Ranches 561 Ranches 561 Ranches 561 Ranches 561 Ranches

Mike Glenn Construction Retirement Auction

HIS WILL BE AN ONLINE AUCTION
Visit bakerauction.com for sale list and information.

Download the Baker Auction app from the app store

Auction Soft Close:
Thursday May 19th @ 2:00pm (MDT)
Auction Preview: May 17th - May 18th
Auction Location:
3325 Eureka Ave Nyssa OR 97913

1 mile North of Nyssa OR on Hwy 201 to Columbia Ave, then West 1 mile to Clark Blvd, then North 1 mile to Eureka Ave, then 3/4 of a mile West to Echo Rd then North to 3325 Eureka Ave Nyssa OR 97913

TRACTORS JCB Loadall 510-40 Turbo telehandler 10000lb, w/ pallet forks. JD 323E track skid steer loader w/ 7' bucket. Set of pallet forks fits JD skid steer. Premier H019PD post hole auger attachment w/ 12" auger fits JD skid steer.

TRUCKS 1985 FORD LTL 9000 tandem axle truck w/ 3406 B CAT diesel, Henderson MK1 10yard steel gravel box. 1974 Ford F350 2wd dually, 460 V8, w/recent rebuild; 10' all steel flatbed w/ under bed tool boxes.

TRAILER C&B 12'x6' tandem axle utility trailer w/ 31" sides. 1995 Trail Max TD-20-T 24'x102" tandem dual flatbed tilt trailer, w/ Ramsey 12000lb winch. 2008 C&B 20'x82" tandem axle flatbed trailer w/16' tilt, 7000lb axles. 2015 Snake River 18'x8' tandem axle flatbed trailer, 5000lb axles. C&B 12' 78" tandem axle enclosed trailer w/ job site pull-out work station. C&B 10'x6' single axle enclosed trailer.

Also selling Equipment, Shop Equipment, Shop Tools & Construction Equipment.
This is just a partial listing.
See our website for a full listing

Baker Auction Co., LLC
bakerauction.com

208-741-4230 • 800-650-5808 • Sam Baker

CAPITAL PRESS LINE CLASSIFIEDS
Fast Results! Easy to Do!

CALL TOLL-FREE: / ONLINE 24/7/365
1-800-882-6789 / CapitalPress.com

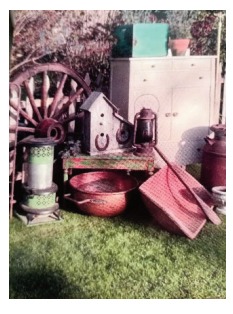
Consign Now!

Farm & Livestock Equipment Consignment Auction: Rowland Auction Service. Saturday, June 4, 2022. Cottonwood, ID

Consign early for website advertising.
Office: 208-962-3284
Dennis Rowland, Owner: cell 208-983-7400
Brent Rowland, Owner: cell 208-451-4415

ADVERTISING IN CAPITAL PRESS IS A CASH COW!

CALL TODAY TO PLACE YOUR AD
1-800-882-6789
FAX (503) 370-4383
CapitalPress.com



Schultz Auction Services. Estate & Trusts Auctions. Estate auction of Dania Nofziger, 40 years of accumulation of antiques and collectibles. 3 miles East of I-5 on highway 20, Albany, OR. Live auction, no buyers premium. Lots of glassware, Pyrex, all kinds of furniture, clawfoot bathtub, clawfoot round oak table, pie safe, lots of vintage kitchen stuff, oil lamps, wagon wheel, Bean pots, figurines, vintage stoves, generators, welders, torch set, 48" Hustler lawn mower, sporting goods, five tree stands, lots of ammo, 170 boxes of 22 lr, for a complete list and pictures go to www.schultzauction.com. May 28th, 9:00

516 Lots & Acreage

(2) Two Acre lots in Christmas Valley, OR. City water and electric close by. \$20,000 per lot 541-297-1451

THIS AD SPACE could be yours!

1-800-882-6789
or FAX 503-370-4383
CapitalPress.com

354 Auction Sales

NATIONAL TENANT, LONG TERM LEASE
AAA Corner Location, Downtown Albany, OR.
Asking \$650,000.
Owner/ Broker
541-754-7314

HOT! SAVINGS at Capital Press
1-800-882-6789
CapitalPress.com

540 Recreational

PUBLISHER'S NOTICE

All real estate advertising in this newspaper is subject to the Fair Housing Act which makes it illegal to advertise "any preference, limitation or discrimination based on race, color, religion, sex, handicap, familial status or national origin, or any intention to make any such preference, limitation or discrimination." Familial status includes children under the age of 18 living with parents or legal custodians, pregnant women and people securing custody of children under 18.

This newspaper will not knowingly accept any advertising for real estate which is in violation of the law. Our readers are hereby informed that all dwellings advertised in this newspaper are available on an equal opportunity basis. To complain of discrimination call HUD toll-free at 1-800-669-9777. The toll-free number for the hearing impaired is 1-800-927-9275.

546 Rentals, Leases

FOR LEASE
Vegetable Processing Facility and 2 Storage Buildings Hermiston Oregon. Processing Facility approximately 58,000 sq. ft. with office, lunch room, receiving area, packing room, two large cold rooms, shop/ parts room, staging room, shipping/ loading dock for three (3) trucks, scales); 2 Storage Facilities (30,000 sq. ft. facility with dehumidification; 60,000 sq. ft. facility with computerized refrigeration and dehumidifiers), private railroad spurs for transportation, water rights (well), septic, electricity, water lagoon for waste water. Will possibly rent processing facility and storage facilities separately. Contact Larry Blunck at 503-656-1654 or larry@bluncklaw.com

Raspberry Acreage for Lease: 23 fenced acres in Sandy, OR. with established raspberry plants, posts and wires. Will need pruning and tying. Lease amount negotiable. All profits to lessee. 360-903-4374, 503-245-3822

540 Recreational

BOOKER AUCTION

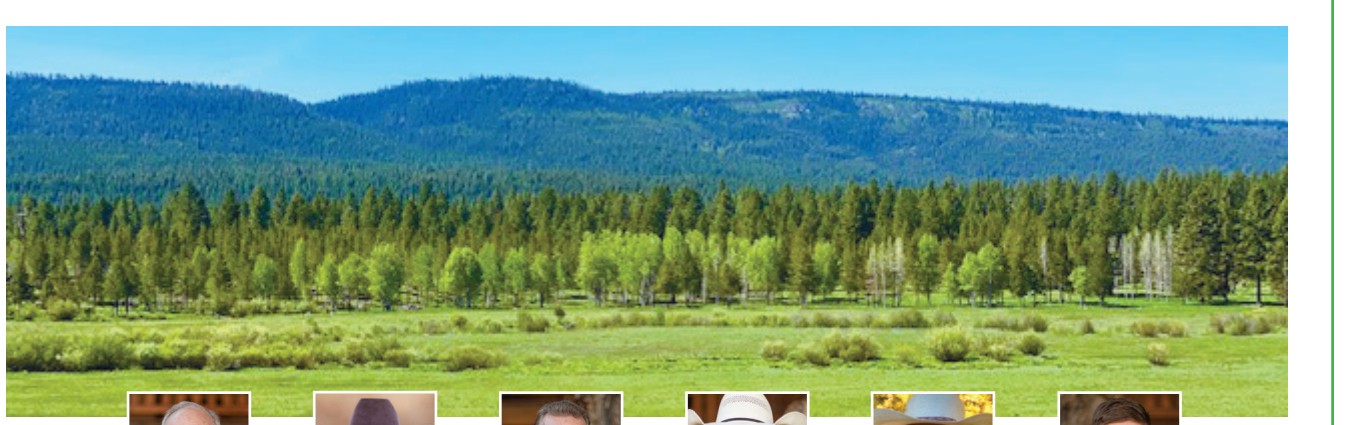
Spring Consignment YOUR PLACE
MAY 18, 2022 | WWW.BOOKERAUCTION.COM

561 Ranches 561 Ranches 561 Ranches 561 Ranches 561 Ranches 561 Ranches 561 Ranches 561 Ranches

THE WHITNEY LAND COMPANY
EST. 1970
Farm, Ranch, & Recreation

541-278-4444

101 S.E. 3rd St., Pendleton, OR 97801
www.whitneylandcompany.com



Jim Whitney CCM/Owner/ Principal Broker Todd Longgood Owner/Broker Gary Jellum Broker Blake Knowles Broker Travis Bloomer Broker Christopher Stuvland Principal Broker

Licensed in the state of Oregon

Circle Bar Ranch -
Harney County, Crane, OR,
8096 +/- acres. **\$5,950,000**
CP#02421

Horseshoe Curve Hunting Property - Umatilla County, Echo, OR - 304 +/- acres
\$3,850,000 CP#02221

Stoney Ridge Ranch -
Klamath County,
Keno, OR, 415 +/- acres.
\$3,200,000 CP#02621

Ukiah Ranch - Umatilla County, Ukiah, OR -
1,494 +/- acres. **\$2,375,000**
CP#02521

Best Road Irrigation Property - Umatilla County, Pendleton, OR, 309 +/- acres.
\$2,200,000 CP#00222

NEW LISTING!
Wallowa River Organic Ranch - Wallowa County, Lostine, OR - 218 +/- acres.
\$1,950,000 CP#00622

NEW LISTING!
High Valley Irrigation Ranch
- Union County, Union, OR,
164 +/- acres. **\$1,800,000**
CP#00422

Pinherio Ranch - Baker County, Unity, OR
1876 +/- acres **\$1,500,000**
CP#01520

NEW LISTING!
Shy Mountain Ranch - Union County, Elgin, OR, 194 +/- acres. **\$1,499,000**
CP#00522

Bensel Road Irrigated Property - Umatilla County, Hermiston, OR, 39 +/- acres
\$1,499,000 CP#01821

LG Riverfront Farm - Union County, Hermiston, OR,
174 +/- acres. **\$1,400,000**
CP#00921

Wetherell Ranch - Del Norte County, Crescent City, CA,
104 +/- acres. **\$1,400,000**
RG#02121

Sutton Creek Pivot Ranch
- Baker County, OR - 5.14 +/- acres **\$970,000**
CP#00521

Keating Pivot Farm -
Baker County, OR,
146 +/- acres. **\$925,000**
CP#01421

Double Bar F Ranch -
Malheur County, Ontario,
OR - 115 acres **\$800,000**
CP#00721

LaRue/Strese Place -
Wheeler County, Condon,
OR, 880 +/- acres.
\$785,000 CP#01721

Timberline Road Property - Union County, Sumner, OR, 10 +/- acres. **\$377,500** CB#01621