

210 Trucks



2000 Kenworth T800 with transfer trailer. C-13 engine, 10 speed transmission, 40,000 lb rears, \$48,000. Call John Lucas 541-968-2239. Eugene, OR



2004 IHC 7400 Digger Derrick with Altec D3050 TR derrick. 50ft. reach, 30,000Lbs. lift . 4 outriggers. 2 tool circuits, Upper and lower controls. 20,000LB. front winch with Capstan. Near new 11/22.5 radials. DT530 Diesel with Allison Automatic trans. PS, AC, CC. Side lock rear differentials. 98,000 ACTUAL HOURS. One owner truck from a large Electrical Utility. Everything on the truck works properly. Clean, well maintained and work ready, \$29,900. Located in Twin Falls ID. Call 208-613-0050

**BEST SELLERS . . .**  
"...The phone rang off the hook."  
VanVeldhuizen Dairy • Turner, OR  
Call and list your BEST SELLER!  
1-800-882-6789

210 Trucks



2005 IHC 5500i with 15 yard dump bed. Barrel bottom with Hi-Lift tailgate. Cummins ISX. 435HP. Jake brake. Fuller 13 speed. 66,000GVW. Hendrickson spring rears. Near new radial tires. PS, AC, CC, PW. Clean and well maintained truck from a State DOT. Work ready! \$44,900. Located in Twin Falls ID. Call 208-613-0050

Does your business need calls, customers and sales? Advertise in Capital Press Line Ad Classifieds. Call 1-800-882-6789

210 Trucks



1989 IHC S1900 tandem axle with 19 foot flatbed. DT466 Diesel. Fuller 13 Speed. PS, AC. 48,000 ACTUAL MILES. 2200 HOURS. Hendrickson rears. 54K GVW. 19 foot double frame back of cab. 80% 11/22.5 radials tires. Spotlessly clean and well maintained truck from the US Bureau of Reclamation. Runs and drives like a new truck. \$24,900. Located in Twin Falls, ID. Call 208-613-0050.

IF YOU HAVE A BEEF - sell it in next week's Capital Press!

210 Trucks



2002 Freightliner FL112 tandem axle dump truck with 15 yard. bed. CAT C12 diesel with 410HP. Fuller 13 speed. PS, AC, CC, Jake Brake. AirLiner rear suspension. 58K GVW. 385/65/22.5 fronts. New 11/22.5 rears. 110K ACTUAL MILES. 6000 Hours. Spotlessly clean and well maintained truck from the US Dept. of Reclamation. It is work ready. \$46,900. Located in Twin Falls ID. Call 208-613-0050

210 Trucks



2007 Freightliner M2, automatic, power windows, power lock, PTO, 33,000gvw spring suspension, box will be removed. \$20,000 SILVERTON, OR 503-932-0766



2000 IHC Tandem axle dump truck. 15 Yard. bed. Cummins N14 Diesel. 410HP. Fuller 13 speed. Jake brake. Hendrickson spring rears. 18K front axle. PS, AC, CC, Differential lock. Good 11/22.5 Radials. 200K. ACTUAL MILES. Clean, well maintained truck from a State DOT. \$29,900. Located in Twin Falls ID. Call 208-613-0050

210 Trucks



2007 Freightliner tandem axle dump truck with 15-18 yard bed and STRONG ARM. MB450 HP Diesel. Eaton ULTRA-SHIFT 10 speed automatic transmission. PS, AC, CC, Jake brake, SIDE LOCK REARS, load tarp, trench gate, Tuf-Trac rear suspension 425/65/22.5 fronts with 11/ 22.5 rears on Alloy wheels. Very clean and well maintained truck from California that is work ready. \$42,000. Twin Falls, ID. Call 208-613-0050

210 Trucks



1993 Ford L9000 tandem axle dump truck with 15 yard. bed. 129,000 ACTUAL MILES. CAT 3406 Diesel. 425HP. 13 speed. Jake brake, PS, AC. 58K GVW. Near new 22.5 radial tires. The truck came from the California DOT and is the cleanest truck they have ever surplussed. It is in near new condition, mechanically and cosmetically. O RUST! Well maintained truck that will outlast 2 brand new trucks. MUST SEE! \$36,900. Located in Twin Falls Id. Call 208 613-0050

211 Pickups



2012 Ford F-250 6.7 Lariat, tow package, backup camera, Bluetooth, navigation system, heated leather and cool seats, hill descent control, memory seat and pedal, power scope trailer heated mirrors, remote start, power sun roof, assisted step tailgate, 20" tires with fuel rims, like new condition, 61,000 miles, \$55,000 OBO. RAYMOND, WA. Call/text (360)208-3128

**Jump Start Your Ads by placing online!** Capital Press Don't wait! Place your ad now! 800-882-6789 • CapitalPress.com

**R & G MACHINING AND ENGINE PARTS**  
COMPLETE DIESEL MACHINE SHOP AND TRUCK REPAIR  
MULINO, OREGON • SHOP: 503-829-6038 • NATIONWIDE: 1-800-823-6038  
We Absolutely, Positively Have The Best Remanufactured Engines Available Anywhere!  
Huge Inventory • Expert Technical Assistance

**ENGINES INSTALLED PRICING**  
Incidentals extra. Exchange 100,000 mile warranty when we install!  
Depending on applications:

GM 6.2 - 6.5T, installed.....	\$7,495
Ford 6.4 P/S, installed.....	\$12,750
Ford 6.4-03 7.3 P/S, installed.....	\$8,600
Cummins 88-02 5.9, installed.....	\$9,400
Cummins 03 & Up, 5.9 C/R, installed.....	\$9,450
Cummins 6.7, installed.....	\$10,250

- We grind and weld crankshafts and camshafts
- We weld blocks & cylinder heads
- Exchange connecting rods or connecting rod kits
- Diesel or Gas engine kits
- Cylinder head or block O-ringing

**All Years & Models:** Turbos, Injectors, High Pressure Oil Pumps, Fuel Injection Pumps, Oil Coolers, Computers - Ford, GM Chrysler

**CUMMINS 5.9 MAGNUM**  
\$5,995 AND CORE \$3,850

**REBUILT DIESEL L/B ENGINES**

CUMMINS		PERKINS & ISUZU	
3.9-4BT.....	\$4,650	Starting at.....	\$5,995
5.9 '88-'02.....	\$4,850	<b>STARTING AT.....</b>	<b>\$5,995</b>
5.9 '03 & up.....	\$5,150	<b>MITSUBISHI &amp; NISSAN</b>	
6.7 C/R.....	\$5,450	Starting at.....	\$5,995
FORD		YANMAR & KUBOTA	
6.0 P/S.....	\$5,845	Starting at.....	\$4,995
6.4 P/S.....	\$6,545	<b>BOBCAT &amp; SHIBAURA</b>	
6.7 P/S.....	\$7,650	Starting at.....	\$3,995
6.9-7.3 IDI.....	\$5,150	<b>DOOSAN &amp; TAKEUCHI</b>	
7.3 P/S.....	\$5,150	Starting at.....	\$5,995
GM		DEUTZ	
6.6 Duramax.....	\$6,550	Starting at.....	\$9,995
6.2-6.5.....	\$4,895	<b>HINO &amp; IVECO</b>	
<b>JOHN DEERE &amp; IH</b>		Starting at.....	\$5,995
Starting at.....	\$5,995	<b>CATERPILLAR &amp; HYUNDAI</b>	
<b>KOBELCO, KOMATSU, HITACHI</b>		Starting at.....	\$5,995
Starting at.....	\$5,995		

We have a large inventory of rebuilt or remanufactured cylinder heads, connecting rods, crankshafts, and blocks on an exchange basis for diesel and gas engines.

Call on other gas or diesel engines. We are a major rebuilder on all diesel brands. All work done in house!

**WANTED**  
Cummins 6.7 and 5.9 - Engine Cores  
R&G Machining 503-829-6038

**IN BUSINESS SINCE 1975.**  
**OVER 250 ENGINES & 450 CYLINDER HEADS IN STOCK!**  
We have a complete line of import diesels and obsolete diesels for your mini excavators or skidsteers. We work and repair all brands!  
**NEED ENGINE PARTS, GAS OR DIESEL - CHECK IT OUT:**  
WWW.EBAY.COM/STR/GRUMPSPERFORMANCECENTER  
GRUMPSPERFORMANCE@GMAIL.COM



2001 International Roll off dump, 3 hydraulic circuits, 20 ton tilt bed dump equipment trailer, 435 Cummins, 13 speed, CA licensed through Oct. 30, \$27,000. Sutter Creek, CA 209-256-1346



2002 Peterbilt 379 Dumptruck C15 Caterpillar Engine, 18 speed manual, 872,664 miles 18ft dump box with lift gate and 2 pea chutes, \$95,000. Roy, WA. 253-405-9520



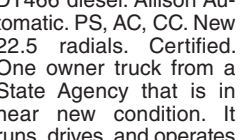
1976 Mack 132,378 miles, high side dump, good tires, new clutch, \$12,500 OBO. Bainbridge Island, WA. 253-691-9891



2004 Freightliner FL70 Service Truck, 250HP 3126 Caterpillar, 9 speed, AC, PS, Locker, 33K GVW. IMT 7500lb crane, wireless remote, hydraulic outriggers, 16' service body, 60% 11r22.5's, 196,000 miles, runs and drives great. \$24,500 J&T Equipment Sales, Stevensville, MT. 406-381-3159

1981 International 5 yard dump: MV404, 5 and 2, air brakes, good condition, \$3500. Brownsville, OR. 541-409-3428

1995 Kenworth E model CAT W900 long hood, walk in sleeper. 1994 Kenworth, 1984 Kenworth W900. Several other trucks and hay trailers. Lakeview, OR 530-473-9161



2000 IHC with Altec 53' Overcenter articulating double bucket man lift with material handler. DT466 diesel. Allison Automatic. PS, AC, CC. New 22.5 radials. Certified. One owner truck from a State Agency that is in near new condition. It runs, drives, and operates like new. WORK READY, \$24,900. Located in Twin Falls ID. Call 208-613-0050

There Are Always Great Deals In Capital Press Classifieds. Call Now And Add Yours! 1-800-882-6789

**WANTED**  
We've Moved to Salem, OR!  
**I BUY TRUCKS**  
Specializing in Running or NOT! In The Pacific Northwest  
503-521-6935  
HAGERMAN INC  
11000 Portland Rd. NE, Salem, OR  
neil@hagermanparts.com

**CLASS 8 TRUCKS**  
509-534-9088



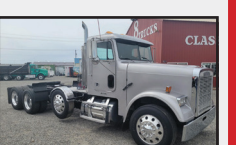
2000 IH 4700 flatbed, T444E diesel, Allison auto., 16' steel flatbed, non CD.....\$26,900



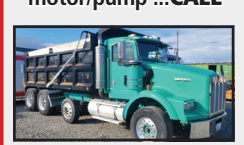
2002 Peterbilt 6x6. CAT C10. RT011909ALL, full lockers 23' CEOF...CALL



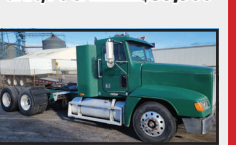
1988 Pete 377 water tender, Cummins 444, 13 spd., 22' bed, 3200 gal. poly tank, Honda motor/pump...CALL



2002 Freightliner Classic, Detroit 12.7, Jakes, 15 speed, drop axle, A/C.....\$39,900



2002 KW T800 dump truck, Cummins N14+ with fresh OH, 18 spd., 46k rears, drop axle, roll tarp...CALL



1999 Freightliner FLD120, Detroit 12.7, 430 hp, 10 spd., 4.11 ratio, 220" WB, wet kit.....CALL

**POWER FLEET & COMMERCIAL SALES**  
MEDIUM DUTY DEALER

2021 Chevrolet Silverado 3500HD 4WD Dump Body  
Stock #24516  
Call for your business preferred price!

Jim Church 503-910-7784  
Delana Johnson 503-769-7100  
Brian Heinrich 503-504-3629  
Ryan Church 503-877-7102

**POWER FLEET - COMMERCIAL**  
WWW.POWERAUTOGROUP.COM  
503-769-7100

**LOVELL Truck Sales**  
53rd Anniversary



(3)2014 Freightliner single axle Cascadia day cab DD-13, Fuller 10 speed, air ride suspension, air slide 5th wheel, dump valve, engine brake, power windows and locks, 155" wheelbase, LOW MILES.....\$49,500each



(2) 2014 freightliner M2 22' reefer truck Cummins 260 hp, Allison auto trans, air ride suspension, 22x102 Morgan reefer box, Carrier supra 960 reefer, ps, ac, cruise control, power windows and locks, 5500lb lift gate. \$49500each



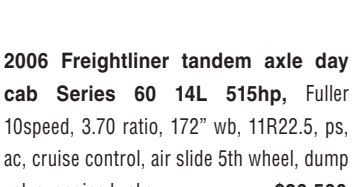
2007 international 4300 cab and chassis. DT-466, Allison automatic will take a PTO, ps, ac, cruise control, Also 2005 & 2010-same specs as above.....\$16,500/ea.



2017 International 4300 18' box Cummins 240hp, Allison auto, 216" wheelbase, ps, ac, cruise control, power windows and locks..... \$36,500



2006 Freightliner tandem axle day cab Series 60 14L 515hp, Fuller 10speed, 3.70 ratio, 172" wb, 11R22.5, ps, ac, cruise control, air slide 5th wheel, dump valve, engine brake..... \$26,500



2006 Freightliner tandem axle day cab Series 60 14L 515hp, Fuller 10speed, 3.70 ratio, 172" wb, 11R22.5, ps, ac, cruise control, air slide 5th wheel, dump valve, engine brake..... \$26,500

1-800-451-0012 (503) 266-5886 FAX (503) 266-6903  
LOVELLTRUCKSALES.COM  
LovellTruck@canby.com  
680 SW 1st Ave (Hwy 99 E) Canby, OR



1995 Ford L8000 tandem dump truck with Ditchmaster 300 ditch cleaning auger with conveyor loading. 14Ft. bed. Cummins 8.3 Diesel. Allison Automatic. PS, AC. 62,000 ACTUAL MILES. 60% 11/22.5 radials. NO RUST! Very clean and well maintained machine from a Public Utility CO. Runs drives and operates like new. \$34,900. Located in Twin Falls ID. Call 208-613-005

IT'S SO EASY TO PLACE CAPITAL PRESS CLASSIFIED ADS... PHONE TOLL FREE 1-800-882-6789

222 Truck/ Auto Parts & Accessories

Your ad here! Call 800-882-6789

AMPS TOMS SPIRE  
DEAN IBET PERIL  
ALSO TONE ATOMS  
PETROLEUM RINSE  
TEETHE NET  
MSG PODIUMS  
HAPPY EELS OHIO  
ISEE STRAY NUMB  
TART HORN ASHES  
SPURSON BMW  
ICE IRONIC  
SWEDE PETTYCASH  
HIDIN EXIT TILE  
ARISE SAME EVES  
MYTHS OMEN TEST

222 Truck/ Auto Parts & Accessories

222 Truck/ Auto Parts & Accessories

**FLATBEDS**  
Pro-Line all steel flatbeds are complete, installed, wired, and ready to work!



- Powder coated
- Colors available
- Mud flaps
- Treated T&G wood deck
- Backup, clearance & work lights
- Trailer plug
- Gooseneck access with cover
- Stop & turn lights on cab guard

Call Today  
Dean 541-419-4170  
Shop 541-447-4555  
www.prolinefab.com  
1440 SW Tom McCall Road • Prineville, OR  
dean@prolinefab.com

216 Vans



2012 Ford Econoline E-450, we have 5 used buses to choose from, great for a tour bus or maybe a weekend / overnighter, these are airport style, 1 has wheelchair lift, \$19,995. Portland, OR. 503-777-4445

219 ATV's/Motorcycle

Honda Pioneer 500: side by side, \$9500. MADRAS, OR. 541-419-7334

Honda Trail 90 -110. Want to buy Honda trail 90 / 110 running or parts. Philomath, OR. 541-929-5993

222 Truck/Auto Parts & Accessories



8x19 foot diamond plate all steel truck bed, with ratchet strap tie downs, nice condition, \$3200 OBO, closed Sunday. Albany, OR. 541-990-9319

24ft all steel truck bed, no racks, heavy built, \$1900. 20ft steel bed with hoist and 4ft racks, \$1600. TURNER, OR (503)930-1706

10ft Boss snow plow: model RT3 Power V, good condition, \$5000. Brownsville, OR. 541-409-3428

228 Tires & Wheels

**LOOK!**  
Nissan NV200 Cargo Van - set of 4 Tires with rims plus 2 sets of new Konig CS-9 065 chains. \$1500 value. Will deliver within 50 miles of Yakima. \$600. Yakima, WA. 206-719-4979

8 tires and wheels to fit 9000 series John Deere. Size 900/50R46 90% thread! 2 1100/45R46 and 2 1000/40R32 tires and wheels to fit John Deere 8 series tractor. Chowchilla, CA. Call 209-246-3309

**Flotation Tires: New-Used**  
42x25x20, 48x25x20  
48x31x20, 44x41x20  
54x37x25, 67x34x25  
66x43x25, 66x44x25  
73x44x32, most metric sizes and rims for all of the above. Chowchilla, CA. 209-246-3309

Goodyear 19.5L-24, set of Contractor-T, 12.5-80-18, work great on a backhoe. 70% rubber, \$1500 OBO for all 4. FOREST GROVE, OR (503)593-6668

2 sets of Duals for McDon Windrowers: 13.5x16.1, \$200 per tire and wheel. CORVALLIS, OR 541-740-2134

**USED FLOTATION TIRES**  
66x43.00 - 25  
18.4 - 16.1  
16.5L - 16.1  
18.4 - 16A  
48x31.00 - 20  
21.5L - 16.1SL  
13.6 - 28  
16.0 - 24  
18.4 - 34

Meridian, ID 208-888-1376

301 RV's & Travel

2009 Salem 5th Wheel Travel Trailer: very good condition, air, heated tanks, stereo, composite siding, \$22,000 Buhl, ID. 208-308-1950

28ft Montana 5th wheel with slides. Excellent condition. Stored under cover. \$15,000. PENDLETON, OR 541-276-4849

310 Campers & Can-

WANTED: Canopy for a Dodge Ram 2015, 1500, quad cab. Please text 541-227-4330

CLASSIFIED LINE ADS GET RESULTS  
1-800-882-6789  
CapitalPress.com

Stay up to date on the latest agricultural news in the west.

ANYTIME ANYWHERE

- State & Federal Laws
- Regulations
- Breaking News
- Varieties of Crops
- Conservation Issues
- Politics
- And More

Call today to subscribe.  
Capital Press  
800-781-3214  
CapitalPress.com