

**899 Heavy & Industrial Equipment**

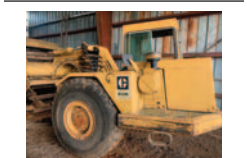
**1971 82-30 Terex:** excellent undercarriage and blade, bare backed, needs paint and minor repairs. \$18,500. REED-SPORT, OR (541)599-2204



1995 Case 9020B Excavator, Hydraulic Thumb, Wedge Coupler, Muck Bucket, 10,000 hour Machine, Runs Great, Asking \$44,950. Sandy, OR. Call Pepe: 503-544-3232; Call Pat: 503-407-9062

**REPLACEMENT DECAL SETS**

Construction, Forestry & Ag Equipment. Fast, Knowledgeable, Reliable Service. 215-536-5339 email: info@CustomServicesCompany.com Thousands of sets, Old & New, in our digital inventory. [www.QuipCal.com](http://www.QuipCal.com)



1980 CAT 613-B elevating scraper. Work ready, good condition, \$29,500 Salem, OR. 503-362-3055



2013 John Deere 60D Excavator, 2776 Hours, 18" 24" 48" Buckets, Rubber Tracks, Blade, Asking \$67,500. Sandy, OR. Call Pepe: 503-544-3232; Call Pat: 503-407-9062



2017 Prime Tech 175 forestry mulcher: 1100 hours, \$165,000. Jefferson, OR. 503-932-1149, 503-930-7834



D65E Komatsu crawler: good condition, extra clearing blade, \$35,000 Rainier, OR. 503-556-4079

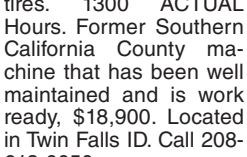


Free to Good Home: My dad's road grader used in the 1950s. Used when he purchased. You Haul. Boring, OR (503)702-7634

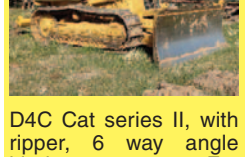
International 4500B Forklift, diesel engine, \$4500. Salem, OR. 503-559-7980



2009 CimLine CRACK PATCHER. Tandem axle. 230 gallon, 18ft. heated hose and wand. Isuzu 3 cylinder diesel. Near new tires. 1300 ACTUAL Hours. Former Southern California County machine that has been well maintained and is work ready, \$18,900. Located in Twin Falls ID. Call 208-613-0050



D4C Cat series II, with ripper, 6 way angle blade, runs great. For more info call only, \$30,000. Terrebonne, OR. 541-480-2881



Vermeer 604 Super J Round Baler: 4ft wide, good condition, new accumulator, \$3000. Albany, OR 541-248-7279



1972 CAT 966C Wheel Loader, CAT 3306 Engine showing 11,100 Hours, 4 Yard Bucket, Runs Great, \$26,500. Woodburn, OR. 503-260-0303



1994 CAT Challenger 75C Rubber Track Tractor, 325 HP, Enclosed Cab, Runs Great, \$39,500. Woodburn, OR. 503-260-0303

"...Sold both bulls second week. Thanks!" Tiara Farm Port Townsend, Wash. You sell too at 1-800-882-6789.

**905 Antique Farm Equipment & Parts**

1995 Model 55 John Deere Hillside Combine: 1 owner, shedded always, excellent shape, needs new owner, \$12,000 OBO TURNER, OR (503)930-1706

**907 Nursery Equipment & Supplies**

**USED NURSERY CONTAINERS:** Used, but reusable nursery containers. All sizes. Inventory changes daily. Call for current availability and prices. Sawyer Farms, Scio OR. 503-769-3417, juddsfarm@wvi.com (also wanted: used containers)

**FRESH SAWDUST:** Consistently fair pricing. **9 Unit Loads Now Available** Forest-Grove, OR. For pricing call 503-849-0216



Nursery stakes: 1/4"x6" on metal pallets. Used 4 years. Great condition, \$1/ stake. Lafayette, OR. 503-437-4833

**908 Garden, Turf Yard Equipment**

Gibson Tractor, tiller steering, front blade, not running, implements included, \$250. Anderson, CA, 530-357-2890

Cyclone Rake Grass Catcher model XL: low hours, 415 gallon capacity, loaded. Call for details. WOODLAND, WA (360)798-0383

**911 Hay Equipment**

2011 New Holland H8080 Swather, runs great, 2400 hrs, Trimble GPS, Quick change knives, 416 header, \$60,000. Redmond, OR. (541)891-4087

**New And Used Parts:** for all models New Holland bale wagons. **Largest Inventory in North America.** Sod Busters Sales, Polson, MT. 877-735-2108 or 406-883-2118

**Large Supply of Rebuilt New Holland Bale Wagons:** Also buying New Holland bale wagons. Sod Busters Sales, Polson, MT. 406-883-2118

**#1 Balewagons:** Buy, Sell, New Holland 2&3 wide self-propelled, pull-type models, parts, tires, manuals. Caldwell, ID. 208-880-2889 [www.balewagon.com](http://www.balewagon.com)

Case International Swather 8830 -year unknown; between 1995-97. Cummins Diesel engine, Hours 2333. Header needs conditioner rollers replaced. Has been well taken care of and stored in shed. \$5,500. Lakeview, OR. (530)908-4000

New Holland, H7450 Disc Mower, 13 foot cut, in good condition, \$20,000 OBO. Centerville, WA 360-609-7743

**Retiring Due to Health:** Hay Equipment: New Holland 489 Haybine with extra parts. New Holland 570 Baler, good baler. New Holland 256 side delivery rake, ground driven. Newer Tedder rake (hay bob) BETR300. (2) 5ft brushhogs, Massey Ferguson 135 gas, 3 cylinder Perkins. Eddyville, OR (541)438-4112

**Hesston Mower Conditioner,** \$9750. Like new, stored inside. Photos available. Estacada, OR. 503-313-2681



Vermeer 604 Super J Round Baler: 4ft wide, good condition, new accumulator, \$3000. Albany, OR 541-248-7279



2001 Case IH 8880: Hesston Built, rotary swather, 15.25ft cutting width, steel roller conditioner header, hydraulic tilt cutter bar, healthy 5.9 12 valve Cummins, AC blows cold, 5886 hours, \$32,000 OBO. Mt. Vernon, WA. 360-661-3231

**Krone BiG Pack 1270 Multi Baler:** 13,700 bales, 250 hours, makes up to 9 bales per bale, very nice machine. Always stored under cover, \$80,000 OBO Rickreall, OR. 503-580-8943

**BEST SELLERS . . .** "The phone rang off the hook." VanVeldhuizen Dairy - Turner, OR Call and list your BEST SELLER! 1-800-882-6789

**911 Hay Equipment**

330 Freeman Baler: 3 string, Wisconsin gas, excellent condition, barn stored, \$6500. JACKSONVILLE, OR (541)951-1913

2015 FITREX Hay Maker Rake, Model HM300, \$3000. 1999 John Deere Mower Conditioner, Model 710, \$2500. 2008 John Deere Baler, small square bales, Model 328, very good condition, \$12,900. Washougal, WA, 360-834-5626, leave a message.

Round Bale Squeeze attachments for loader. \$1500 and \$750. SCIO, OR 503-509-0369



Allen LMC Rake Model 8803: stored inside, \$8500. Echo, OR (541)561-6803



CASE IH 8585 Baler: 3x4 bales, yearly maintenance, shedded, 95,000 bales, \$10,000 OBO. Echo, OR 541-561-6803

Retirement Sale! 2016 New Holland Discbine 313 mower with rubber roller, \$32,000. Roto Grind grain grinder GG10 3 point mount, \$10,000. Alloway 4 row crop cultivator with shields, \$3,000. Four 10x300 bags, \$840 each. John Deere 7200 corn planter, 6 row, \$2,500. Trout Lake, WA. 509-637-4492

Call 1-800-882-6789 to Place your line ad TODAY!

**Freeman 370 Baler:** Like new, 27,000 bales, recent \$8,000 overhaul, new paint, hydro, \$20,000 OBO. Junction City, OR. 541-998-2429

**RCO Baits** Gophers • Squirrels Voles • Moles Ask for your Capital Press Discount Dealer Locator 1-800-214-2248 Harrisburg, OR 52724641

**917 Orchard/Vineyard Equipment**



2015 ORXL 1 Owner, Low Hour Machine. 667 Hours. This machine was used for cleanup picks after hand harvest, Very good condition, \$178,000. Silverton, OR. Contact 503-932-1948.



2018 John Deere 5100GN: orchard cab, 3000 hours, warranty to 4000 hours, \$42,500. Albany, OR. 503-510-7779



Orchard sprayer Isuzu minitruck 4x4 with raven 330 controller, 3 boom manifolds, flow meter, centrifugal pump, 150 gallon tank, hydraulic folding booms, fully automated, \$17,000. Dayton, OR. 503-437-4833

**920 Tractors**

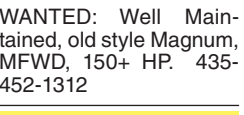
**917 Orchard/Vineyard Equipment**

**NEW 14 gauge trellising wire,** 1800lb rolls, \$1.25 per pound. 20,000 pounds available. SHERIDAN, OR (971)241-0344

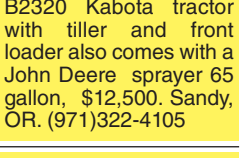
**7655 Flory Sweeper** 1880 hours, \$30,000. Silverton, OR. 503-932-0766

**920 Tractors**

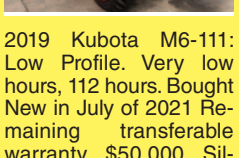
**WANTED:** Well Maintained, old style Magnum, MFWD, 150+ HP. 435-452-1312



B2320 Kubota tractor with tiller and front loader also comes with a John Deere sprayer 65 gallon, \$12,500. Sandy, OR. (971)322-4105



2019 Kubota M6-111: Low Profile. Very low hours, 112 hours. Bought New in July of 2021 Remaining transferable warranty, \$50,000. Silverton, OR. Contact 503-932-1948



2019 Kubota M6-141 DTC, 4WD, 141HP, 588 hours, \$72,900. Lebanon, OR. 541-905-3850



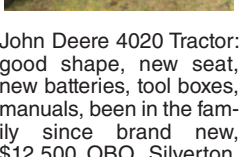
**CAT Challenger 65E:** 3300 hours, \$60,000. IHC TD9 Ag Special, \$6000. Independence, OR. 503-851-9601



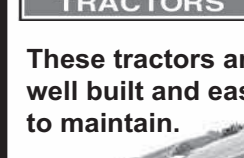
John Deere 4440: 4x4, new factory rebuilt engine and transmission, clean cab, new drive tires, stored inside, \$35,000. COTTAGE GROVE, OR 541-953-7990



John Deere 4020 Tractor: good shape, new seat, new batteries, tool boxes, manuals, been in the family since brand new, \$12,500 OBO. Silverton, OR 503-931-0044



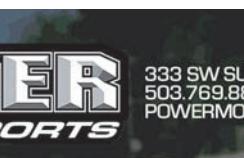
485K QuadTrac, 2010, deluxe cab, 4300 hours, excellent condition, \$140,000. Salem, OR. 503-917-1401



2014 JOHN DEERE Model 5115m Orchard Canby, OR Call (503) 969-9545



2012 Case Magnum 180 Tractor: 1200 hours, duals, suspension cab, GPS and auto steer, front and rear weights, 480 tires. Really Nice Tractor, \$110,000 OBO Sheridan, OR. 971-600-6106



2012 Case Magnum 180 Tractor: 1200 hours, duals, suspension cab, GPS and auto steer, front and rear weights, 480 tires. Really Nice Tractor, \$110,000 OBO Sheridan, OR. 971-600-6106



2012 Case Magnum 180 Tractor: 1200 hours, duals, suspension cab, GPS and auto steer, front and rear weights, 480 tires. Really Nice Tractor, \$110,000 OBO Sheridan, OR. 971-600-6106



2012 Case Magnum 180 Tractor: 1200 hours, duals, suspension cab, GPS and auto steer, front and rear weights, 480 tires. Really Nice Tractor, \$110,000 OBO Sheridan, OR. 971-600-6106

\*Price does not include taxes and applicable fees. Vehicle in image may have accessories not included in price. Color may vary.

**920 Tractors**



3020 John Deere diesel: 4 new tires. John Deere loader with bucket and forks, \$10,800 OBO. Moses Lake, WA. 206-459-8925

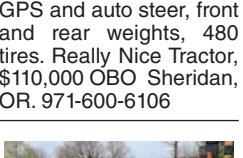
2010 John Deere 5055D, 543 hours, stick shift, 2WD, excellent condition, \$16,900. Washougal, WA. 360-834-5626, leave a message.



2005 Kubota 9000 Tractor: 2 remotes, radio, AC, 1445 hours, excellent condition. \$38,850 Yamhill, OR. 503-550-0050



2012 Case Magnum 180 Tractor: 1200 hours, duals, suspension cab, GPS and auto steer, front and rear weights, 480 tires. Really Nice Tractor, \$110,000 OBO Sheridan, OR. 971-600-6106



2019 Kubota M6-141 DTC, 4WD, 141HP, 588 hours, \$72,900. Lebanon, OR. 541-905-3850

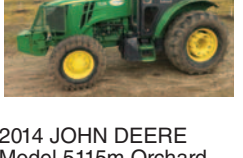
**John Deere Tractor #3025 with bucket, rotary cutter, forklift blades,** \$17,500. Salem, OR. 503-931-5624

Satoh Beaver 4WD Tractor, 13HP diesel, hydraulic blade and rotavator, \$2800. St. Helens, OR. 503-349-6037

3020 John Deere gas with powershift, 18 4 tires on the back, 1100 tires on the front, with John Deere loader, bucket and forks, \$8900. 541-501-1446

530 Case diesel, nice tractor, good rubber and paint, \$5500. 541-501-1446

485K QuadTrac, 2010, deluxe cab, 4300 hours, excellent condition, \$140,000. Salem, OR. 503-917-1401



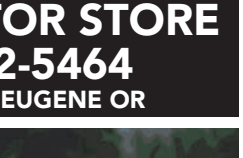
2014 JOHN DEERE Model 5115m Orchard Canby, OR Call (503) 969-9545



2014 JOHN DEERE Model 5115m Orchard Canby, OR Call (503) 969-9545



2014 JOHN DEERE Model 5115m Orchard Canby, OR Call (503) 969-9545



2014 JOHN DEERE Model 5115m Orchard Canby, OR Call (503) 969-9545



2014 JOHN DEERE Model 5115m Orchard Canby, OR Call (503) 969-9545



2014 JOHN DEERE Model 5115m Orchard Canby, OR Call (503) 969-9545



2014 JOHN DEERE Model 5115m Orchard Canby, OR Call (503) 969-9545

**923 Farm Equipment**

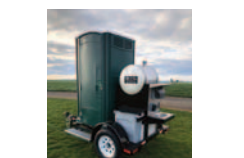


3 silage trailer. 20, 22 and 24ft, \$5000, \$8000 and \$10,000 MOSES LAKE, WA (509)855-1036

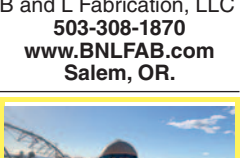
**Case International Combine** 1680 Axial flow, 2 rotors, set up for specialty seeds, Radish, etc. 1015 pickup head, 25' ft grain head with cart. \$12,500 OBO.

**Case International Combine** 1460 Axial flow with specialty rotor 810 pickup head, recently replace rubber concaves, good in interplanted crops in Hazel nut orchards. \$8000 OBO. Tom: 503-437-2299 or Sam 503-864-2442

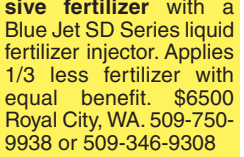
8 foot flail mower, good shape, \$2000. 8 foot brush rake, like new, \$1000. Salem, OR 503-990-1219



**Portable Toilet Trailers** **GGAP Compliant** Single or Double Trailers B and L Fabrication, LLC 503-308-1870 [www.BNFLFAB.com](http://www.BNFLFAB.com) Salem, OR.



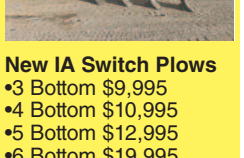
Save Money on expensive fertilizer with a Blue Jet SD Series liquid fertilizer injector. Applies 1/3 less fertilizer with equal benefit. \$6500 Royal City, WA. 509-750-9938 or 509-346-9308



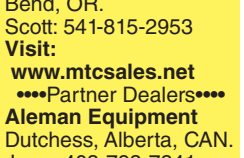
Allis-Chalmers Air Corn Planter: 12 row, 15in spacing, \$3000. Royal City, WA. 509-750-9938 or 509-346-9308



**New IA Switch Plows** \*3 Bottom \$9,995 \*4 Bottom \$10,995 \*5 Bottom \$12,995 \*6 Bottom \$19,995 \*7 Bottom \$21,995 Poly Wear Armor HD Components Trip Bottoms **MTC Sales** Bend, OR. Scott: 541-815-2953 Visit: [www.mtcsales.net](http://www.mtcsales.net) \*\*\*\*Partner Dealers\*\*\*\* **Aleman Equipment** Dutchess, Alberta, CAN. Jerry: 403-793-7341 **Equipment Finders** Twin Falls, ID Dave: 208-731-4040 **Vista Equipment** Hazen, NV. Jerry: 775-741-0688



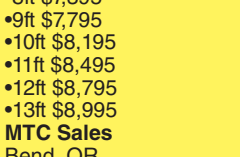
**NEW IA Tandem and Offset Wheel Discs.** \*7ft \$6,995 \*8ft \$7,395 \*9ft \$7,795 \*10ft \$8,195 \*11ft \$8,495 \*12ft \$8,795 \*13ft \$8,995 **MTC Sales** Bend, OR. Scott: 541-815-2953 Visit: [www.mtcsales.net](http://www.mtcsales.net) \*\*\*\*Partner Dealers\*\*\*\* **Aleman Equipment** Dutchess, Alberta, CAN. Jerry: 403-793-7341 **Equipment Finders** Twin Falls, ID Dave: 208-731-4040 **Vista Equipment** Hazen, NV. Jerry: 775-741-0688



**NEW IA Hydraulic Box Scrapers with hydraulic tilt** \*LD 7ft. \$2,395 \*LD 8ft. \$2,595 \*LD 10ft. \$2,795 \*LD 12ft. \$2,995 \*HD 8ft. \$3,995 \*HD 10ft. \$4,495 \*HD 12ft. \$4,995 \*HD 14ft. \$5,395 **MTC Sales** Bend, OR. Scott: 541-815-2953 Visit: [www.mtcsales.net](http://www.mtcsales.net) \*\*\*\*Partner Dealers\*\*\*\* **Aleman Equipment** Dutchess, Alberta, CAN. Jerry: 403-793-7341 **Equipment Finders** Twin Falls, ID Dave: 208-731-4040 **Vista Equipment** Hazen, NV. Jerry: 775-741-0688



**NEW IA Hydraulic Box Scrapers with hydraulic tilt** \*LD 7ft. \$2,395 \*LD 8ft. \$2,595 \*LD 10ft. \$2,795 \*LD 12ft. \$2,995 \*HD 8ft. \$3,995 \*HD 10ft. \$4,495 \*HD 12ft. \$4,995 \*HD 14ft. \$5,395 **MTC Sales** Bend, OR. Scott: 541-815-2953 Visit: [www.mtcsales.net](http://www.mtcsales.net) \*\*\*\*Partner Dealers\*\*\*\* **Aleman Equipment** Dutchess, Alberta, CAN. Jerry: 403-793-7341 **Equipment Finders** Twin Falls, ID Dave: 208-731-4040 **Vista Equipment** Hazen, NV. Jerry: 775-741-0688



**NEW IA Hydraulic Box Scrapers with hydraulic tilt** \*LD 7ft. \$2,395 \*LD 8ft. \$2,595 \*LD 10ft. \$2,795 \*LD 12ft. \$2,995 \*HD 8ft. \$3,995 \*HD 10ft. \$4,495 \*HD 12ft. \$4,995 \*HD 14ft. \$5,395 **MTC Sales** Bend, OR. Scott: 541-815-2953 Visit: [www.mtcsales.net](http://www.mtcsales.net) \*\*\*\*Partner Dealers\*\*\*\* **Aleman Equipment** Dutchess, Alberta, CAN. Jerry: 403-793-7341 **Equipment Finders** Twin Falls, ID Dave: 208-731-4040 **Vista Equipment** Hazen, NV. Jerry: 775-741-0688



**NEW IA Hydraulic Box Scrapers with hydraulic tilt** \*LD 7ft. \$2,395 \*LD 8ft. \$2,595 \*LD 10ft. \$2,795 \*LD 12ft. \$2,995 \*HD 8ft. \$3,995 \*HD 10ft. \$4,495 \*HD 12ft. \$4,995 \*HD 14ft. \$5,395 **MTC Sales** Bend, OR. Scott: 541-815-2953 Visit: [www.mtcsales](http://www.mtcsales.net)