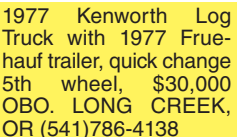


210 Trucks



2020 Dodge Ram 3500, Fully Loaded Laramie, Automatic, \$72,000 Miles, Bradford Flatbed, Stock Wheels, Goose Neck, Tool Boxes, Asking \$79,950.00 Call Pepe: 503-544-3232; Call Pat: 503-407-9062 Sandy, OR. (503)668-5024

210 Trucks



1977 Kenworth Log Truck with 1977 Fruehauf trailer, quick change 5th wheel, \$30,000 OBO. LONG CREEK, OR (541)786-4138

210 Trucks



2008 Ford F-450 Dually: 4X4 Flatbed, gooseneck hitch, Extended cab, 62,600 miles, 6.4L Turbo Diesel. \*\*Not CA Compliant. \$32,000. Cloverdale, CA. (707)272-4476

210 Trucks



1996 GMC TopKick Single Axle Dump Truck. 12ft. dump bed with 4ft. removable sides and swing out rear gate. Scissor hoist. CAT 3116 Diesel. Allison Automatic. PS, AC, CC. 26,000GVW. Very clean well maintained truck from a California State agency. Runs, drives, and operates well. WORK READY. \$17,900 Located in Twin Falls, ID. Call 208-613-0050

210 Trucks



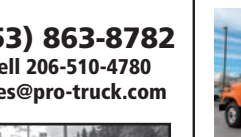
2007 IHC 4400 with 12K. Lb. folding crane 25ft. reach and Hydraulic cable winch and outriggers. 15ft. flatbed with tool boxes and torch compartment and 3500lb. lift gate. DT466 Diesel with Fuller 10 speed transmission. Low Miles PS, AC, CC. 80% 22.5 radials tires. Spotlessly clean and well maintained truck from the California DOT. RUST FREE! Runs, drives and operates like new. WORK READY, \$29,900. Located in Twin Falls ID. Call 208-613-0050

210 Trucks



2006 International 8600 Tandem Axle Day Cab Tractor Truck, 167" WB, 500 HP, 10-spd. transmission, steel frame.....\$19,500

210 Trucks



2005 Sterling C&C 2 axle, 24 foot cab and chassis, MBE-900, 330 HP 6-spd. Automatic, 179,428 miles.....\$18,500

210 Trucks



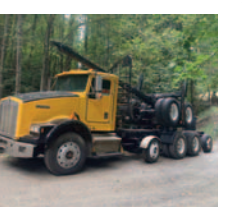
2001 IHC 2574 tandem axle dump truck. 15 yard bed with HiLift tailgate. Cummins N14 Diesel with 425 HP. 13 Speed transmission. Jake Brake, PS, AC, CC. 90% 22.5 Radial Tires. Spotlessly clean and well maintained, one owner truck from a large State DOT. RUST FREE! \$39,000. Located in Twin Falls, ID. Call 208-613-0050



1995 Ford L8000 tandem dump truck with Ditchmaster 300 ditch cleaning auger with conveyor loading. 14ft. bed. Cummins 8.3 Diesel. Allison Automatic. PS, AC. 62,000 ACTUAL MILES. 60% 11/22.5 radials. NO RUST! Very clean and well maintained machine from a Public Utility CO. Runs drives and operates like new, \$34,900. Located in Twin Falls ID. Call 208-613-005

2001 Freightliner tandem axle dump truck.

2001 Freightliner tandem axle dump truck. 16 yard round bottom bed with HiLift tailgate and load tarp. CAT C12 Diesel 410HP. RTLO 13 SPEED. Jake brake, PS, AC, CC. Hendrickson rears. 70% 11/22.5 radials. 170,000 ACTUAL MILES. Very clean one owner former Municipal truck that has been well maintained and is work ready, \$46,900. Located in Twin Falls ID. Call 208-613-0050



1996 KW Log Truck and trailer, N14 cummins, 13 speed, \$40,000. Deer Island, OR. 503-438-5361



2012 Dodge Ram 2500 SLT Pickup: 4 door, 6-1/3ft, 129,000 miles, automatic, pre DEF, 6.7 Cummins diesel, 4x4, Skaug utility box, turnover ball, rolling shelves, clean title \$36,000. Caldwell, ID. 208-366-9679

Capital Press CLASSIFIEDS 1-800-882-6789 CapitalPress.com

TRY CAPITAL PRESS CLASSIFIEDS CALL TODAY! 1-800-882-6789 FAX (503) 370-4383 • CapitalPress.com



1986 IHC 2564 S/A dump truck. 8 yard bed. Cummins L10 Diesel. Fuller 13 speed transmission. PS, AC, Jake brake. 33K. GVW. Plumbed for trailer. Near new 11/22.5 radial tires. 200K ACTUAL MILES. Extremely clean and well maintained former State DOT truck that is work ready. \$18,900. Located in Twin Falls ID. Call 208-613-0050



1986 Ford F700 Wildland Fire Tender. 1700 gallon aluminum tank. Has suction, draft and outlets on both sides and rear for 2" and 3" hose. Nozzles included and 100ft. of hose. Rear dump valve. 7L gas with 5&2 transmission. PS, AC. 26,000 GVW. No CDL! Near new 11/22.5 Radial tires. All emergency equipment included. Lights, sirens etc. Truck came from a small County Fire Dept. and has been meticulously maintained. It is nearly as clean as new inside and out. Runs drives and operates as NEW. \$14,900. Located in Twin Falls ID. Call 208-613-0050



1986 Ford F700 Wildland Fire Tender. 1700 gallon aluminum tank. Has suction, draft and outlets on both sides and rear for 2" and 3" hose. Nozzles included and 100ft. of hose. Rear dump valve. 7L gas with 5&2 transmission. PS, AC. 26,000 GVW. No CDL! Near new 11/22.5 Radial tires. All emergency equipment included. Lights, sirens etc. Truck came from a small County Fire Dept. and has been meticulously maintained. It is nearly as clean as new inside and out. Runs drives and operates as NEW. \$14,900. Located in Twin Falls ID. Call 208-613-0050

**The West's BEST Ag News!**  
1st Place  
newspaper  
e-paper  
facebook  
twitter  
web  
CapitalPress.com

IT'S SO EASY TO PLACE CAPITAL PRESS CLASSIFIED ADS... PHONE TOLL FREE 1-800-882-6789

**WANTED**  
We've Moved to Salem, OR!  
"Fairly Honest Neil"  
**I BUY TRUCKS**  
Specializing in Running or NOT!  
In The Pacific Northwest  
503-521-6935  
HAGERMAN INC  
11000 Portland Rd. NE, Salem, OR  
neil@hagermanparts.com

**R & G MACHINING AND ENGINE PARTS**  
COMPLETE DIESEL MACHINE SHOP AND TRUCK REPAIR  
MULINO, OREGON • SHOP: 503-829-6038 • NATIONWIDE: 1-800-823-6038  
We Absolutely, Positively Have The Best Remanufactured Engines Available Anywhere!  
Huge Inventory • Expert Technical Assistance

**ENGINES INSTALLED PRICING**  
Incidentals extra. Exchange 100,000 mile warranty when we install! Depending on applications.

GM 6.2 - 6.5T, installed.....	\$7,495
Ford 6.4 P/S, installed.....	\$12,750
Ford 94-03 7.3 P/S, installed.....	\$8,600
Cummins 88-02 5.9, installed.....	\$8,400
Cummins 03 & Up, 5.9 C/R, installed.....	\$9,450
Cummins 6.7, installed.....	\$10,250

- We grind and weld crankshafts and camshafts
- We weld blocks & cylinder heads
- Exchange connecting rods or connecting rod kits
- Diesel or Gas engine kits
- Cylinder head or block O-ringing

**All Years & Models:** Turbos, Injectors, High Pressure Oil Pumps, Fuel Injection Pumps, Oil Coolers, Computers - Ford, GM Chrysler

**CUMMINS 5.9 MAGNUM**  
\$5,995 AND CORE \$3,850

**REBUILT DIESEL L/B ENGINES**

CUMMINS		PERKINS & ISUZU	
3.9-4BT.....	\$4,650	Starting at.....	\$5,995
5.9 '88-'02.....	\$4,850	MITSUBISHI & NISSAN	
5.9 '03 & up.....	\$5,150	Starting at.....	\$5,995
6.7 C/R.....	\$5,450	YANMAR & KUBOTA	
FORD		Starting at.....	\$4,495
6.0 P/S.....	\$5,845	BOBCAT & SHIBAURA	
6.4 P/S.....	\$6,545	Starting at.....	\$3,995
6.7 P/S.....	\$7,650	DOOSAN & TAKEUCHI	
6.9-7.3 IDI.....	\$5,150	Starting at.....	\$5,995
7.3 P/S.....	\$5,150	DEUTZ	
GM		Starting at.....	\$9,995
6.6 Duramax.....	\$6,550	HINO & IVECO	
6.2-6.5.....	\$4,895	Starting at.....	\$5,995
JOHN DEERE & IH		Starting at.....	\$5,995
Starting at.....	\$5,995	CATERPILLAR & HYUNDAI	
KOBELCO, KOMATSU, HITACHI		Starting at.....	\$5,995
Starting at.....	\$5,995	<b>WANTED</b>	
Cummins 6.7 and 5.9 - Engine Cores			
R&G Machining 503-829-6038			

We have a large inventory of rebuilt or remanufactured cylinder heads, connecting rods, crankshafts, and blocks on an exchange basis for diesel and gas engines.  
Call on other gas or diesel engines. We are a major rebuilder on all diesel brands. All work done in house!



1999 IHC with Altec 53' articulating double bucket man lift with material handler. DT466 diesel. Allison Automatic. PS, AC, CC. New 22.5 radials. Certified. One owner truck from a State Agency that is in near new condition. It runs, drives, and operates like new. WORK READY, \$24,900. Located in Twin Falls ID. Call 208-613-0050



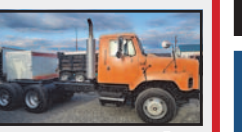
**Fire District 3 CLARK COUNTY WASHINGTON CALL FOR BID Fire Engine**  
Sealed bid proposals will be received by Clark County Fire District 3 on or before 5:30 p.m. on May 9, 2022 at 17718 NE 159 St., Brush Prairie, WA 98606, for the sale of the following:  
1993 Pierce Arrow VIN 4PICA02G7PA000464, 4PICA02G7PA000464, Detroit 8V92 425 HP - 96210 miles, 5605 hours, Allison Transmission w/Retarder (needs repair), 750 Gallon tank, Waterous 1500 GPM Fire Pump. The transmission is out of the chassis, does not drive. Vehicle sold is as is. Needs to be removed by June 1, 2022 Original owner, we have all records.  
**Minimum Bid: \$3,000.00**  
Information: Fire District 3 17718 NE 159 St. Brush Prairie, WA 98606 360-892-2331 Fire Chief Scott Sorenson scott@fire3.org

**DO TODAY!**  
Call Capital Press 1-800-882-6789 to place an ad and renew my subscription!

**CLASS 8 TRUCKS 509-534-9088**



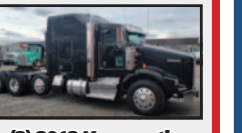
2006 International 7500, DT570 350 hp, 15 spd., Jakes, lockers, drop axle, 24' FB...CALL



2002 IH 2674 Cab Chassis, Cummins ISM w/Jakes, Allison 4560 automatic, double frame, Hendrickson HN, 77,000 miles .....CALL



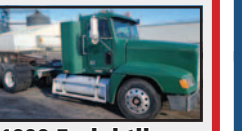
1988 Pete 377 water tender, Cummins 444, 13 spd., 22' bed, 3200 gal. poly tank, Honda motor/pump ...CALL



(2) 2012 Kenworth T800's, Cummins ISX, 400k miles, lockers, drop axles.....CALL



2002 KW T800 dump truck, Cummins N14+ with fresh OH, 18 spd., 46k rears, drop axle, roll tarp...CALL



1999 Freightliner FLD120, Detroit 12.7, 430 hp, 10 spd., 4.11 ratio, 220" WB, wet kit.....CALL

**OVER 250 ENGINES & 450 CYLINDER HEADS IN STOCK!**  
We have a complete line of import diesels and obsolete diesels for your mini excavators or skidsteers. We work and repair all brands!

**NEED ENGINE PARTS, GAS OR DIESEL - CHECK IT OUT:**  
WWW.EBAY.COM/STR/GRUMPYSPERFORMANCECENTER  
GRUMPYSPERFORMANCE@GMAIL.COM

**POWER FLEET & COMMERCIAL SALES**  
MEDIUM DUTY DEALER

2022 Chevy Silverado 3500 Reg Cab Flat Bed Stock #24923

Call for your business preferred price!

Jim Church 503-910-7784 jim@powerautogroup.com	Delana Johnson 503-769-7100 delana@powerautogroup.com	Brian Heinrich 503-504-3629 brian@powerautogroup.com	Ryan Church 503-877-7102 ryan@powerautogroup.com
--	---	--	--

**CHEVROLET BUSINESS ELITE** **CHEVROLET BUSINESS ELITE**

**POWER FLEET - COMMERCIAL**  
WWW.POWERAUTOGROUP.COM  
503-769-7100

Hood for Freightliner FLD, set back axle, \$1000 MERRILL, OR (541)281-3941



8x19 foot diamond plate all steel truck bed, with ratchet strap tie downs, nice condition, \$3200 OBO, closed Sunday. Albany, OR. 541-990-9319

**CUSTOM FABRICATION**  
We can meet your needs!  
541-447-4555  
**PRO-LINE FABRICATION**  
Prineville, OR

**228 Tires & Wheels**  
**USED FLOTATION TIRES**  
66x43.00 - 25  
18.4 - 16.1  
16.5L - 16.1  
18.4 - 16A  
48x31.00 - 20  
21.5L - 16.1SL  
13.6 - 28  
16.0 - 24  
18.4 - 34  
Meridian, ID 208-888-1376

**Print and online Ag News for ranchers, farmers, vintners, nursery people and more!**

**ANYTIME ANYWHERE**

**Capital Press**  
1-800-882-6789  
CapitalPress.com

**LOVELL Truck Sales** 53rd ANNIVERSARY

2006 International 4300 24' box truck DT-466 220 hp, allison auto, 254"wb, rail gate, non CDL. ....\$24,500

(2) 2014 freightliner M2 22' reefer truck Cummins 260 hp, Allison auto trans, air ride suspension, 22x102 Morgan reefer box, Carrier supra 960 reefer, ps, ac, cruise control, power windows and locks, 5500lb lift gate. \$49500each

(3)2014 Freightliner single axle Cascadia day cab DD-13, Fuller 10 speed, air ride suspension, air slide 5th wheel, dump valve, engine brake, power windows and locks. 155" wheelbase, LOW MILES .....\$49,500each

2007 international 4300 cab and chassis. DT-466, Allison automatic will take a PTO, ps, ac, cruise control,... \$16,500

1997 16' Columbia 4 axle pup.... \$14,500

Coming this week:  
1989 Freightliner 3-axle 24 bed and hoist cabover

LOVELLTRUCKSALES.COM  
LovellTruck@canby.com  
680 SW 1st Ave (Hwy 99 E)  
Canby, OR

**LOOK!**  
Nissan NV200 Cargo Van - set of 4 Tires with rims plus 2 sets of new Konig CS-9 065 chains. \$1500 value. Will deliver within 50 miles of Yakima.  
\$600. Yakima, WA. 206-719-4979

8 tires and wheels to fit 9000 series John Deere. Size 900/50R46 90% tread! 2 1100/45R46 and 2 1000/40R32 tires and wheels to fit John Deere 8 series tractor. Chowchilla, CA. Call 209-246-3309

**Flotation Tires: New-Used**  
42x25x20, 48x25x20  
48x31x20, 44x41x20  
54x37x25, 67x34x25  
66x43x25, 66x44x25  
73x44x32, most metric sizes and rims for all of the above. Chowchilla, CA. 209-246-3309

**301 RV's & Travel**

2016 Keystone Passport RV trailer, 26 ft long, barely used. Asking \$18,900 OBO. Salem, OR. 503-378-9179

**310 Campers & Can-**  
WANTED: Canopy for a Dodge Ram 2015. 1500, quad cab. Please text 541-227-4330