

# Don't Miss Another Issue of Capital Press

Stay up to date on the latest agricultural and natural resources news.

ANYTIME ANYWHERE



1 year \$65  
2 years \$115  
EZ Pay Digital \$4/month  
Digital + Print \$5/month  
1-800-781-3214  
CapitalPress.com

**822 Nursery Stock -**  
Hazelnut Trees: Sacajawea, 5 years old, \$6-\$8.  
Blueberries: Duke, 4 year old plants, \$3.00 each. Albany, OR. 503-871-9114

Organic blueberry plants, 14 years old, 4 varieties. \$40 each, \$35 each for 10 or more. Pine ID, Call Dan 208-866-3653



Hazelnut Trees: McDonald, Jefferson, Yamhill, Wepster, York, Eta, Theta, Felix, Dayton, OR. 503-864-4422

**824 Seed**  
Oats \$13/ bag; Wheat \$7/ bag. Pasture Seed \$1.20/ lb. Lawn Seed \$1.80/ lb. Wheat Straw \$120/ ton. Grass Hay \$180/ ton. Rickreall, OR. 503-623-6922

Emmer Seed & Karma Purple Barley Seed. Cleaned and bagged. 2,000lb totes. Will Ship. Wisall, MT. 406-220-2142

Diva Soft White Spring Wheat. Bulk. Forest Grove, OR. 503-310-2524

**826 Organic Farming**  
AVAILABLE: 30 acres of certified organic irrigated ground for rent, or will grow crops for you. Ready to plant, excellent growing season. Looking for options, let's talk. Rufus, OR. 541-980-5979

**835 Hemp**  
The Oregon Hemp Farmer is looking to buy hemp biomass. Office 503-873-6774; Cell 503-551-5809

Capital Press Ag Weekly  
*It works!*

"I ran an A-I Bred Heifer ad under Dairy Cattle in Capital Press and got excellent results."  
Ray Williams  
Milton-Freewater, OR

Call to place your ad!

**AD DEADLINES:**  
Classified Display Ads  
Wednesday at 10AM  
Classified Line Ads  
Wednesday at Noon

Capital Press  
Place your ad today!  
800-882-6789  
CapitalPress.com

**824 Seed**

**Why Pay More?**  
Selam  
**TEFF GRASS SEED**  
• Excellent Quality Selam Teff Grass Seed  
Directly from our farm.  
• Excellent Germination  
• Hay production, pasture  
• Fast growing for multiple cut  
• \$1.99lbs or \$99 for 50lbs coated, uncoated

Money Back Guarantee  
**650-485-9100**  
Email: tesfa@selamfoods.com

**905 Antique Farm Eq. & Parts**

**869 Livestock Equipment & Supplies**



New IA Portable Hay Feeder:  
•8 hole wheels  
•Swing up tongue  
•Inner bunk  
•35 stations  
\$6,395  
2 or more \$6,195 each.  
**MTC Sales**  
Bend, OR.  
Scott: 541-815-2953  
Visit:  
[www.mtcsales.net](http://www.mtcsales.net)  
\*\*\*\*Partner Dealers\*\*\*\*

**Aleam Equipment**  
Dutchess, Alberta, CAN. Jerry: 403-793-7341  
**Equipment Finders**  
Twin Falls, ID  
Dave: 208-731-4040  
**Vista Equipment**  
Hazen, NV.  
Jerry: 775-741-0688

**Hay Bonnet Horse Feeders in Stock:** NW Farm Supply, Hermiston, OR. 800-801-5650 or Mike 541-561-6047

**872 Dairy Equip. &**  
**Kiln Dried Shavings:** Smaller truck loads now available. Hogfuel also available. Call for details. Forest Grove, OR. 503-849-0216

Capital Press CLASSIFIEDS  
1-800-882-6789  
CapitalPress.com

**NEW MANURE SPREADER**  
400 bu. • BUY OR RENT  
Call Scott at Barr-Tech  
Compost/Organics Recycling  
Authorized Dealer of PIK RITE Spreaders  
509-590-0437  
[www.Barr-Tech.net](http://www.Barr-Tech.net)  
Sprague, WA 528560-1

**878 Generators**



1996 Spectrum 350 KW GenSet. Detroit 8V92, 568 HP. 260 ACTUAL HOURS. 480v.240v. 120v. 1 and 3 PH. Mounted on an HD tandem axle trailer with 350 gal. fuel tank. New 14 ply radial tires. Former City unit from Southern Arizona. Like New Cond. WORK READY! \$25,000 Located in Twin Falls Id. Call 208-613-0050 . Twin Falls, ID.

**GENERATORS:** Used, low hour takeouts, 20kW to 2000kW, diesel, propane, & natural gas. Cooperstown, ND. We ship nationwide. 701-371-9526 or 701-367-4305  
[abrahamindustrial.com](http://abrahamindustrial.com)

**REFURBISHED PUMPS AT A FRACTION OF THE COST OF NEW.** (6) Cornell Marathon Electric, 15 to 75hp, 1760-3500 RPM's; (3) Berkeley Baldor Industrial Motor, 7.5 to 15hp, 3450 RPM's. Meridian, ID. 208-888-1376

**824 Seed**

**887 Irrigation Equip-**  
Used Valley 600 circle, 7 stands, 6-5/8" pipe, newer select control panel, new pipe on corner, 1000 8' system, 174' corner, 82' overhang, REDUCED to \$10,000 for quick sale. Near Pasco, WA. 509-727-1919



Berkeley Irrigation Pump. 6 cylinder Deutsch Diesel. 140HP. 1200 GPM. 75 PSI. 400+ gallon fuel tank. 411 ACTUAL HOURS. One owner, like new condition. \$18,900. Located in Twin Falls ID. Call 208-613-0050

100 Plus 3inx40ft A&M, Pierce, Western, aluminum hand line pipe, \$67,00 each. La Grande, OR. 541-786-1128



(30) 2 inch x 40 foot and (3) 3 inch x 40 foot. Hand lines plus fittings for several different configurations. Pipes located in Irrigon, OR \$3,000. 503-753-3404

4in & 5in used irrigation pipe. \$4 per foot. SAINT PAUL, OR. 503-633-2191



**NEW IA Pivot Track Closer.** Heavy Duty with adjustable cone discs. From 60" to 12" closing width. Hydraulic Depth Control water fill roller packer. \$5,495.  
MTC Sales  
Bend, OR.  
Scott: 541-815-2953  
Visit:  
[www.mtcsales.net](http://www.mtcsales.net)  
\*\*\*\*Partner Dealers\*\*\*\*

**Aleam Equipment**  
Dutchess, Alberta, CAN. Jerry: 403-793-7341  
**Equipment Finders**  
Twin Falls, ID  
Dave: 208-731-4040  
**Vista Equipment**  
Hazen, NV.  
Jerry: 775-741-0688

**(40) Used Pivots: New listings coming.** Engines, pumps, Garden Valley, ID. Call Mike at 208-420-1480, or see [www.pivotsplus.com](http://www.pivotsplus.com)

**REFURBISHED PUMPS AT A FRACTION OF THE COST OF NEW.** (6) Cornell Marathon Electric, 15 to 75hp, 1760-3500 RPM's; (3) Berkeley Baldor Industrial Motor, 7.5 to 15hp, 3450 RPM's. Meridian, ID. 208-888-1376

Drip Irrigation Trailer, with 2 new 24" sand filters and valves on 6' x 10' utility trailer. \$10,000. Quincy, WA. (360)202-0665

**THIS AD SPACE could be yours!**  
1-800-882-6789  
or FAX 503-370-4383  
CapitalPress.com

1975 CAT Excavator E120B Pro Force: new tracks, 3ft bucket, 18in clip on trenching bucket, thumb, protective cage, \$29,500. Bainbridge Island, WA. 253-691-9891

**905 Antique Farm Eq. & Parts**

**887 Irrigation Equip-**  
400 PLUS 4in. Wade Rain aluminum pipe complete with sprinklers and risers, \$80 each, choice or \$60 each, all. Including miscellaneous fittings, all 4in. Independence, OR. 503-851-9601

**Wade Rain Wheel Lines:** (1) 5ft and (3) 7ft wheels, quarter mile. \$2,000 to \$5,000. FOREST GROVE, OR (503)310-2524



2004 Gorman Rupp 4 inch self priming pump. Deutz 3 cylinder. Diesel, towable with 1242 ACTUAL HOURS. Former Municipal machine that is in like new condition. \$9900. Twin Falls, ID. Call 208-613-0050

**H<sub>2</sub>O Pipe & Supply**  
Specializing in  
• Drip Irrigation  
• Filtration • Design  
598 Baseline, Cornelius, OR  
**(503) 357-4217**  
[www.hpspipe.com](http://www.hpspipe.com)  
CCB#120254

**WaterTec IRRIGATION**  
**USED DIESEL PUMP**  
John Deere 80HP  
400 gpm @ 140 psi  
165 gal fuel tank  
**\$25,600 USD**

360-393-4923  
Lynden, WA  
[www.watertecna.com](http://www.watertecna.com)

**893 Logging Equip-**  
1977 Kenworth Log Truck with 1977 Fruehauf trailer, quick change 5th wheel, \$30,000 OBO. LONG CREEK, OR (541)786-4138



John Deere 310B Backhoe: good rubber, new overhauled injector pump, new fuel pump, new alternator. Runs great, 18in and 24in bucket, new cutting edge for front bucket, very straight machine. Ready for work, \$13,750. Prineville, OR. 970-846-4898



1975 CAT Excavator E120B Pro Force: new tracks, 3ft bucket, 18in clip on trenching bucket, thumb, protective cage, \$29,500. Bainbridge Island, WA. 253-691-9891



1975 CAT Wheel loader 920. 8ft bucket, clearing blade with ripper teeth attachment, tires fair, \$19,500. Bainbridge Island, WA. 253-691-9891

**905 Antique Farm Eq. & Parts**

**899 Heavy & Industrial Equipment**



2009 CimLine CRACK PATCHER. Tandem axle. 230 gallon, 18ft. heated hose and wand. Isuzu 3 cylinder diesel. Near new tires. 1300 ACTUAL Hours. Former Southern California County machine that has been well maintained and is work ready, \$18,900. Located in Twin Falls ID. Call 208-613-0050

950 CAT Bucket: 9K86.58 3-1/2 yard bucket, good condition, \$2,000 Merrill, OR. 541-281-3941



WANTED: 1/4in x 12in diameter stainless steel pipe. Any length. 20ft or 40ft preferred. ASHLAND, OR. (541)821-3778



2012 Komatsu PC350LC-8 Excavator, Hydraulic Thumb, Hydraulic Q/C, 7170 Hours, Asking \$129,950. Sandy, OR. Call Pepe: 503-544-3232; Call Pat: 503-407-9062



2015 Case CX130C Excavator, Hydraulic Thumb, Hydraulic Coupler, Isuzu Diesel, Dig Bucket, 4728 Hours, Asking \$89,500. Sandy, OR. Call Pepe: 503-544-3232; Call Pat: 503-407-9062



2002 Deere 200C LC Excavator, 9700 hours, Hydraulic Q/C, Hydraulic Thumb, 40" Dig Bucket, Asking \$59,950.00. Sandy, OR. Call Pepe: 503-544-3232; Call Pat: 503-407-9062



1995 Case 9020B Excavator, Hydraulic Thumb, Wedge Coupler, Muck Bucket, 10,000 hour Machine, Runs Great, Asking \$44,950. Sandy, OR. Call Pepe: 503-544-3232; Call Pat: 503-407-9062

**HOT! SAVINGS**  
at Capital Press  
1-800-882-6789  
CapitalPress.com

**902 Farm Equip. Parts**

**BIG TRACTOR PARTS, INC.**  
~ GEARED FOR THE FUTURE ~

**STEIGER TRACTOR SPECIALIST**

- 1. We are your source for new & used Steiger drivetrain parts Series 1-9300 Series.
- 2. We rebuild Spicer manual transmissions, Fugi power shift transmissions, dropboxes & axle with ONE YEAR WARRANTY!
- 3. We now rebuild computer control boxes for Steiger tractors 1982-1999.

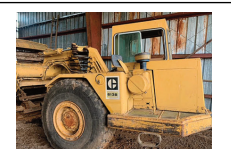
**800-982-1769**  
[www.bigtractorparts.com](http://www.bigtractorparts.com)

**905 Antique Farm Eq. & Parts**

**899 Heavy & Industrial Equipment**

1971 82-30 Terex: excellent undercarriage and blade, bare backed, needs paint and minor repairs, \$18,500. REED-SPORT, OR (541)599-2204

**REPLACEMENT DECAL SETS**  
Construction, Forestry & Ag Equipment. Fast, Knowledgeable, Reliable Service. 215-536-5339 email: info@CustomServicesCompany.com  
Thousands of sets, Old & New, in our digital inventory. [www.QuipCal.com](http://www.QuipCal.com)



1980 CAT 613-B elevating scraper. Work ready, good condition, \$29,500 Salem, OR. 503-362-3055



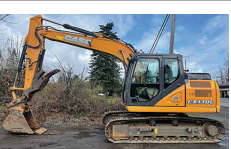
2013 John Deere 60D Excavator, 2776 Hours, 18" 24" 48" Buckets, Rubber Tracks, Blade, Asking \$67,500. Sandy, OR. Call Pepe: 503-544-3232; Call Pat: 503-407-9062



2017 Prime Tech 175 forestry mulcher: 1100 hours, \$165,000. Jefferson, OR. 503-932-1149, 503-930-7834



D65E Komatsu crawler: good condition, extra clearing blade, \$35,000 Rainier, OR. 503-556-4079



2015 Case CX130C Excavator, Hydraulic Thumb, Hydraulic Coupler, Isuzu Diesel, Dig Bucket, 4728 Hours, Asking \$89,500. Sandy, OR. Call Pepe: 503-544-3232; Call Pat: 503-407-9062

**CASE INDUSTRIAL PARTS**  
We sell genuine, after market, and used CASE parts at discount prices nationwide.  
Call For Free Catalog.  
**CENTRAL CATALOG**  
AFTER MARKET & USED PARTS  
Medford, OR  
**(888) 593-8749**

**905 Antique Farm Equipment & Parts**

1995 Model 55 John Deere Hillside Combine: 1 owner, shedded always, excellent shape, needs new owner, \$12,000 OBO TURNER, OR (503)930-1706

**GK Greenhouses - All Steel Construction**

**GK Greenhouses & Accessories:**

- Pre-engineered for easy set-up
- All steel siderails & base channel
- Fans, heaters & shutters in-stock!
- Poly covers and shade cloth
- All accessories for your greenhouse growing operation

**GK MACHINE DONALD OREGON 503-678-5525**  
**www.GKGreenhouse.com**