

210 Trucks



1997 IHC 4900 with 12ft. 7 to 8 yard dump bed with trench gate. DT466 diesel with Allison 6 speed automatic with retarder. PS, AC, CC. Near new 22.5 radials. Very clean and well maintained truck from a State DOT. Work ready, \$18,900. Located in Twin Falls ID. Call 208-613-0050



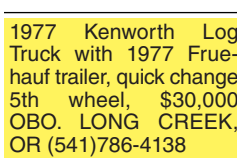
2005 IHC 5500i with 15 yard dump bed. Barrel bottom with Hi-Lift tailgate. Cummins ISX, 435HP. Jake brake. Fuller 13 speed. 66,000GVW. Hendrickson spring rears. Near new radial tires. PS, AC, CC, PW. Clean and well maintained truck from a State DOT. Work ready! \$44,900. Located in Twin Falls ID. Call 208-613-0050



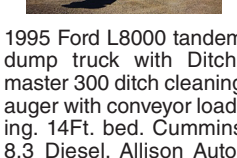
1985 AutoCar-Volvo 6X6 tandem axle truck with 20 Ft. steel flatbed. Cummins Diesel L-10 325 HP. Fuller 10 speed. transmission. Switch controlled transfer and front drive. 22,000 ACTUAL MILES. 2200 HOURS. 60% rubber. 325/85-22.5 fronts. 66,000 GVW. Spotlessly clean and well maintained truck from the US Bureau of Reclamation. Runs and drives like new Work Ready. Needs nothing, \$34,900. Located in Twin Falls ID. Call 208-613-0050



1989 IHC S1900 tandem axle with 19 foot flatbed. DT466 Diesel. Fuller 13 Speed. PS, AC. 48,000 ACTUAL MILES. 2200 HOURS. Hendrickson rears. 54K GVW. 19 foot double frame back of cab. 80% 11/22.5 radial tires. Spotlessly clean and well maintained truck from the US Bureau of Reclamation. Runs and drives like a new truck. \$24,900. Located in Twin Falls, ID. Call 208-613-0050.



1977 Kenworth Log Truck with 1977 Fruehauf trailer, quick change 5th wheel, \$30,000 OBO. LONG CREEK, OR (541)786-4138



1995 Ford L8000 tandem dump truck with Ditchmaster 300 ditch cleaning auger with conveyor loading. 14ft. bed. Cummins 8.3 Diesel. Allison Automatic. PS, AC. 62,000 ACTUAL MILES. 60% 11/22.5 radials. NO RUST! Very clean and well maintained machine from a Public Utility CO. Runs drives and operates like new, \$34,900. Located in Twin Falls ID. Call 208-613-005



2007 Freightliner tandem axle dump truck with 15-18 yard bed and STRONG ARM. MB450 HP Diesel. Eaton ULTRA-SHIFT 10 speed automatic transmission. PS, AC, CC, Jake brake, SIDE LOCK REARS, load tarp, trench gate, Tuf-Trac rear suspension 425/65/22.5 fronts with 11/22.5 rears on Alloy wheels. Very clean and well maintained truck from California that is work ready. \$44,900. Twin Falls, ID. Call 208-613-0050



1999 IHC with Lift-All 53' Overcenter articulating double bucket man lift with material handler. DT466 diesel. Allison Automatic. PS, AC, CC. New 22.5 radials. Certified. One owner truck from a State Agency that is in near new condition. It runs, drives, and operates like new. WORK READY, \$24,900. Located in Twin Falls ID. Call 208-613-0050

**HOT! Savings at Capital Press**  
1-800-882-6789  
CapitalPress.com

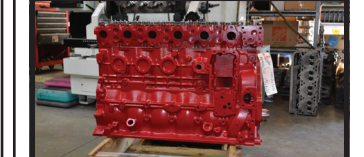
210 Trucks

**R & G MACHINING AND ENGINE PARTS**  
COMPLETE DIESEL MACHINE SHOP AND TRUCK REPAIR  
MULINO, OREGON • SHOP: 503-829-6038 • NATIONWIDE: 1-800-823-6038  
We Absolutely, Positively Have The Best Remanufactured Engines Available Anywhere!  
Huge Inventory • Expert Technical Assistance

**ENGINES INSTALLED PRICING**  
Incidentals extra, Exchange 100,000 mile warranty when we install!  
Depending on applications:  
GM 6.2 - 6.5T, installed.....\$7,495  
Ford 6.4 P/S, installed.....\$12,750  
Ford 94-03 7.3 P/S, installed.....\$9,600  
Cummins 88-02 5.9, installed.....\$9,400  
Cummins 03 & Up, 5.9 C/R, installed.....\$9,450  
Cummins 6.7, installed.....\$10,250

- We grind and weld crankshafts and camshafts
- We weld blocks & cylinder heads
- Exchange connecting rods or connecting rod kits
- Diesel or Gas engine kits
- Cylinder head or block O-ringing

**All Years & Models:** Turbos, Injectors, High Pressure Oil Pumps, Fuel Injection Pumps, Oil Coolers, Computers - Ford, GM Chrysler



**CUMMINS 5.9 MAGNUM**  
\$5,995 AND CORE \$3,850

**IN BUSINESS SINCE 1975.**

**OVER 250 ENGINES & 450 CYLINDER HEADS IN STOCK!**  
We have a complete line of import diesels and obsolete diesels for your mini excavators or skidsteers. We work and repair all brands!

**NEED ENGINE PARTS, GAS OR DIESEL - CHECK IT OUT:**  
WWW.EBAY.COM/STR/GRUMPYPSPERFORMANCECENTER  
GRUMPYPSPERFORMANCE@GMAIL.COM

**REBUILT DIESEL L/B ENGINES**

CUMMINS	PERKINS & ISUZU
3.9-4BT.....\$4,650	Starting at.....\$5,995
5.9 '88-02.....\$4,850	
5.9 '03 & up.....\$5,150	
6.7 C/R.....\$5,450	
FORD	YANMAR & KUBOTA
6.0 P/S.....\$5,845	Starting at.....\$4,495
6.4 P/S.....\$6,545	
6.7 P/S.....\$7,650	
6.9-7.3 IDI.....\$5,150	
7.3 P/S.....\$5,150	Starting at.....\$5,995
GM	DEUTZ
6.6 Duramax.....\$6,550	Starting at.....\$9,995
6.2-6.5.....\$4,895	
JOHN DEERE & IH	HINO & IVECO
Starting at.....\$5,995	Starting at.....\$5,995
KOBELCO, KOMATSU, HITACHI	CATERPILLAR & HYUNDAI
Starting at.....\$5,995	Starting at.....\$5,995

We have a large inventory of rebuilt or remanufactured cylinder heads, connecting rods, crankshafts, and blocks on an exchange basis for diesel and gas engines.

Call on other gas or diesel engines. We are a major rebuilder on all diesel brands. All work done in house!

**WANTED**  
Cummins 6.7 and 5.9 - Engine Cores  
R&G Machining 503-829-6038

**POWER FLEET & COMMERCIAL SALES**  
MEDIUM DUTY DEALER

<b>Jim Church</b> 503-910-7784 jimc@powerautogroup.com	<b>Delana Johnson</b> 503-769-7100 delana@powerautogroup.com	<b>Brian Heinrich</b> 503-504-3629 brian@powerautogroup.com	<b>Ryan Church</b> 503-877-7102 ryan@powerautogroup.com

 <b>Silverado Med Duty Trucks</b> Ranging from 4500-6500 Call for your business preferred price	 <b>2020 Chevy 5500XD LCF Diesel</b> Call for your business preferred price
--	---

**CHEVROLET BUSINESS ELITE** **POWER FLEET - COMMERCIAL** **CHEVROLET BUSINESS ELITE**

WWW.POWERAUTOGROUP.COM  
503-769-7100

**LOVELL Truck Sales**  
53rd Anniversary

 <b>2006 International 4300 24' box truck</b> DT-466 220 hp, Allison auto, 254" wb, rail gate, non CDL.....\$24,500	 <b>(2) 2014 Freightliner M2 22' reefer truck</b> Cummins 260 hp, Allison auto trans, air ride suspension, 22x102 Morgan reefer box, Carrier supra 960 reefer, ps, ac, cruise control, power windows and locks, 5500lb lift gate, \$49500each
---	---

 <b>(3) 2014 Freightliner single axle Cascadia day cab DD-13</b> , Fuller 10 speed, air ride suspension, air slide 5th wheel, dump valve, engine brake, power windows and locks, 155" wheelbase, LOW MILES.....\$49,500each	 <b>2000 Freightliner FLD 120SD 4axle Dump truck</b> , Cat 430 hp, Fuller 10 speed, 2 speed rear axle, set up to pull a pup, Hendrickson suspension, 16' box, 210" wheelbase.....\$34,500
--	--

 <b>2007 International 4300 20' flatbed</b> DT-466 225 hp, Allison RDS 2100, spring suspension, 221" wheelbase, ps, ac, cruise control, non cdl..... \$22,500	 <b>2017 International 4300 18' box</b> Cummins 240hp, Allison auto, 216" wheelbase, ps, ac, cruise control, power windows and locks..... \$36,500
---	---

Coming this week:  
1989 Freightliner 3-axle 24 bed and hoist cabover

**1-800-451-0012**  
**(503) 266-5886**  
**FAX (503) 266-6903**

**LOVELLTRUCKSALES.COM**  
LovellTruck@canby.com  
680 SW 1st Ave (Hwy 99 E)  
Canby, OR

**1-800-882-6789**  
Classified Line Ads Get Results - CapitalPress.com

222 Truck/ Auto Parts & Accessories	222 Truck/ Auto Parts & Accessories	222 Truck/ Auto Parts & Accessories
-------------------------------------	-------------------------------------	-------------------------------------

**FLATBEDS**  
Pro-Line all steel flatbeds are complete, installed, wired, and ready to work!

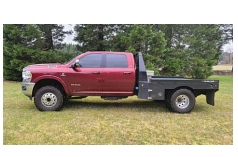
- Powder coated
- Colors available
- Mud flaps
- Treated T&G wood deck
- Backup, clearance & work lights
- Trailer plug
- Gooseneck access with cover
- Stop & turn lights on cab guard

Also, check out our Economy Flatbed!  
All steel, wired, ready to work. You install.

Call Today  
Dean 541-419-4170  
Shop 541-447-4555  
www.prolinefab.com  
dean@prolinefab.com

**PRO-LINE FABRICATION**  
1440 SW Tom McCall Road • Prineville, OR

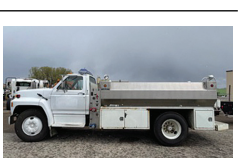
210 Trucks



2020 Dodge Ram 3500, Fully Loaded Laramie, Automatic, \$72,000 Miles, Bradford Flatbed, Stock Wheels, Goose Neck, Tool Boxes, Asking \$79,950.00 Call Pepe: 503-544-3232; Call Pat: 503-407-9062 Sandy, OR. (503)668-5024



2001 Freightliner tandem axle dump truck. 16 yard round bottom bed with HiLift tailgate and load tarp. CAT C12 Diesel 410HP. RTLO 13 SPEED. Jake brake. PS, AC, CC. Hendrickson rears. 70% 11/22.5 radials. 170,000 ACTUAL MILES. Very clean one owner former Municipal truck that has been well maintained and is work ready, \$42,000. Located in Twin Falls ID. Call 208-613-0050



1986 Ford F700 Wildland Fire Tender. 1700 gallon aluminum tank. Has suction, draft and outlets on both sides and rear for 2" and 3" hose. Nozzles included and 100ft. of hose. Rear dump valve. 7L. gas with 5&2 transmission. PS, AC. 26,000 GVW. No CDL! Near new 11/22.5 Radial tires. All emergency equipment included. Lights, sirens etc. Truck came from a small County Fire Dept. and has been meticulously maintained. It is nearly as clean as new inside and out. Runs drives and operates as NEW. \$14,900. Located in Twin Falls ID. Call 208-613-0050

**TJ EQUIPMENT LLC**  
Ferdale, WA  
(360) 815-1597

**2005 NH TS115A w/ loader 4WD**, 115 hp, 7940 hours, powershift w/ hydr. reverser, 2 remotes, 540/1000 PTO...\$36,500

**2003 NH TV140 w/ loader bidirectional**, 4WD, 140 hp, 8203 hours, 3 range hydro, front 540 PTO, rear 540/1000 PTO...\$34,000

**2007 NH T6030 4WD**, 115 hp, 9823 hours, partial powershift, 540 PTO, 2 remotes.....\$36,000

**1983 Ford 6710 2WD**, 78 hp, 6556 hours, 3 remotes, 540 PTO.....\$13,250

Find lots more equipment at:  
www.TJEquipmentLLC.com

**222 Truck/Auto Parts & Accessories**



Hendricks lift axle. Complete with fenders, \$5000. Hydraulic wet kit, tank, hoses, valves, pumps, \$4000. Kimberly, OR. 541-792-0151

Hood for Freightliner FLD, set back axle, \$1000 MERRILL, OR (541)281-3941

316 Trailers Misc.

228 Tires & Wheels

**USED FLOTATION TIRES**  
66x43.00 - 25  
18.4 - 16.1  
16.5L - 16.1  
18.4 - 16A  
48x31.00 - 20  
21.5L - 16.1SL  
13.6 - 28  
16.0 - 24  
18.4 - 34  
Meridian, ID  
208-888-1376

301 RV's & Travel



2016 Keystone Passport RV trailer, 26 ft long, barely used. Asking \$18,900. Salem, OR. 503-378-9179

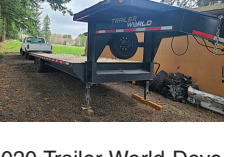
**Capital Press CLASSIFIEDS**  
1-800-882-6789  
CapitalPress.com

354 Auction Sales

316 Trailers Misc.



1972 Hyster Equipment trailer, 30ft, 20 ton, excellent tires, \$7500. Bainbridge Island, WA. 253-691-9891



2020 Trailer World Dove-tail trailer, 32', Jacks, Ramps, Work Ready, Asking \$11,950. Sandy, OR. Call Pepe: 503-544-3232; Call Pat: 503-407-9062

**Line Classifieds Call Toll-Free 1-800-882-6789**  
FAX: (503) 370-4383  
CapitalPress.com

354 Auction Sales

316 Trailers Misc.

245 Flatbed Trailers, 1995 Raven and 1996 USLTB. Good Condition, \$20,000 both. \$11,00 each Merrill, OR. 541-281-3941

(3) 2005 Great Dane 53ft vans: with electric tailgate. Good shape. \$24,500 each OBO. Forest Grove, OR. (503)341-4289

45ft Wilson Roadbrute, full aluminum trailer in good condition, \$14,500. RUFUS, OR (541)993-5979



2015 Talbert 48' mechanical double drop RGN. 2 axles, 29' well, tire inflation system, new deck, and scales. 8'6" wide, \$35,000. Brooks, OR. 503-580-4261

354 Auction Sales

**Winmill Construction Auction**

Live & Online - Rupert, ID  
Tuesday, April 19th, 2022  
10AM MDT

Construction Equipment - Cement Forms & Tools - Tractor - Hay Equipment - Enclosed Trailers

\*\*Lots of misc. with large section of power tools. The misc. items are only sold live and not available for online bidding, please be there early.\*\*



**BIG MOUNTAIN AUCTIONS**  
Keith Couch  
Owner/Auctioneer  
208.431.9300

Give us a call to consign today.  
Go to our website to see all available items and to bid!  
**www.bigmountainauctions.com**

316 Trailers Misc.

**NEW CATTLE/LIVESTOCK TRAILER - 2022 GR 6'8"X24' 14K GOOSENECK STOCK TRAILER**



**\$18,850** Cash/Check Price + Tax & Doc Fee

- 2022 GR 14K Gooseneck Stock Trailer
- 48" wide escape door \*
- SIZE: 6'8"X24' 14K
- Slide gate in both cut gates
- Gooseneck Stock Trailer with Nose Metal Roof
- (2) Dome Lights
- Closed Sides
- 12" high spray in liner
- (2) 7,000 Lbs.
- Full swing with half slide tail gate
- Torsion Brake Axles Tare
- Color SILVER
- Weight: 5,536 Lbs.
- VIN # 3BZGP2427NC003044
- Wood Floor

Your All Service Dealer • Halsey, OR  
541-369-2755 • 541-740-5135  
**ORDER YOUR TRAILER NOW!**  
View our inventory: diamondksales.com

**Diamond Trailer Sales**