

561 Ranches

KNIFE LAND

Lostine Timber Tract - OR
9,772± acres with 2.5 miles of frontage on Bear Creek, USFS frontage, and the potential for 41± home sites at 240± acres each. **\$9,319,000.** 1,198± acres with creek frontage available separately. **\$1,438,260**

Salmon River Pasture Ranch - ID
100± acres with over 1 mile of river frontage, home, and shop/storage. Great hunting and fishing! **\$1,750,000**

208.345.3163 knipeland.com

561 Ranches

720 acres – Hay ranch located in Northeastern CA. Great water, 560 acres under production, 8 pivots with flood irrigated corners. A very efficient and productive ranch. In Williamson Act, lower taxes. Mule deer and Antelope. Two landowner deer tags a year. Very nice home and improvements. Shasta Land Services, Inc. Ben Urricelqui DRE#02108958 530-221-8100 www.ranch-lands.com

The West's BEST Ag News!

- newspaper
- e-paper
- facebook
- twitter
- web

CapitalPress.com

A picture is worth a 1,000 words

Add a full color photo to your print and online ad today.

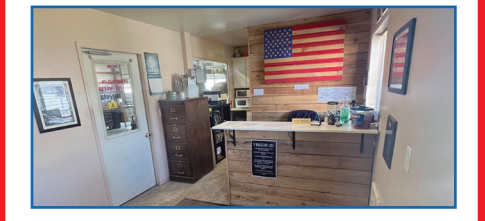
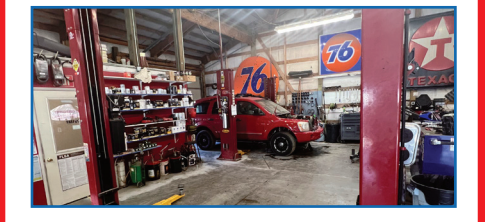
Capital Press
800-882-6789
CapitalPress.com

561 Ranches

BUSINESS OPPORTUNITY IN LAKEVIEW, OR

- .46 acres commercial real estate
- 3000 sf Shop w/ 2 double bays & 1 Singe Bay, 3 Lifts,
- Fully gated yard, 3- phase power

\$495,000 MLS #220137140



Andra Campbell, Broker
541-281-2180

Crater Lake Realty
Chiloquin, Oregon
andraleighcampbell@gmail.com • craterlakerealtyinc.com

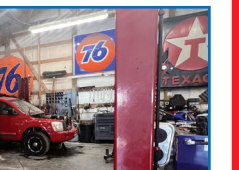
561 Ranches

564 Farms

HORSEPOWER REAL ESTATE
Price Reduction

Ayres Lane Farm Junction City, OR
1512 Sq. Ft. Home
34.5 acres with Willamette River Frontage, irrigation rights, 3 Phase power & Class 2 Newberg soils. 72x120 ag building, 72x72 converted breezeway barn, and (2) 30x100 green houses.
\$899,000

Lisa Johnson, Principal Broker, ALC
541-510-4601
CountryProperty@gmail.com
WesternOregonFarmsAndRanches.com
Licensed in Oregon 5285961-1



527717-1

564 Farms

AGPROfessionals
DEVELOPERS OF AGRICULTURE

1,350-head dairy with beautiful home

Buhl, Idaho \$7,500,000

- 160 acres +/-
- Commodity barn
- Farmhouse & double wide mobile home
- Maternity barn
- 80,000 lbs. milk silo
- 1,766 Hatfield lock-ups
- 2,500 gal Mueller milk storage tank
- Milking pens
- Diesel generator
- 7-tower pivot
- 110 ft Truck scale
- Water Rights
- Plentiful feed inventories
- Automatic interior foot baths
- Update lagoons
- Office & shop

RYAN HOSTETLER
Accredited Land Consultant
303.883.7080
Ryan@Agpros.com

www.agpros.com
213 Canyon Crest Dr., # 100
Twin Falls, ID
208.595.5301



Up-to-date agricultural and natural resource news.

ANY TIME. ANY WHERE.

Don't miss another issue! Subscribe today.

CAPITAL PRESS
1-800-781-3214
CapitalPress.com

567 Dairy Farms

Capital Press Ag Weekly
It works!

We cover all your crop needs!

Capital Press is an important part of my information toolbox. With vegetable seed crops spread out from Junction City to Basin City, we need accurate and timely information about current events and pending legislation that affects our business. The Capital Press delivers a sledgehammer's worth of news every week!

Tyler C. Clark
Sedro-Woolley, WA

Capital Press
EMPOWERING PRODUCERS OF FOOD & FIBER
800-882-6789 • CapitalPress.com



579 Acreage

CHEHALIS, WA

20 Acs. of land and timber. Subdivided in (4) 5-acre tracts with building sites after timber is removed. Close in Chehalis. Adna or Chehalis schools. **\$275,000.** By owner. **(360)736-0836**

570 Orchard & Vineyard Property

4 acre berry farm/ winery, home, tasting room, shop, barn, solar, greenhouses
MLS 2110986 Fred Braun \$629,000. Soldotna, AK. 9 0 7 - 2 5 2 - 8 3 7 5
https://www.jackwhite.com/details.php?mls=97&mlsid=2110986.
brauncom@ptialaska.net.

BUYERS BEWARE

- If the deal sounds too good to be true, it probably is.
- Know who you are dealing with – independently confirm your buyer's name, street address, and telephone number.
- Don't send payment for an expensive item you haven't inspected.
- Consider how you pay. Credit cards have significant fraud protection built in, but some payment methods don't. Wiring money through services such as Western Union or MoneyGram is risky because it's nearly impossible to get your money back. That's also true for reloadable cards and gift cards. Honest companies won't require you to use these payment methods.
- Never use a bank-to-bank transfer in a transaction.

579 Acreage

BSG BAILEY SEED & GRAIN LLC

Contracted Production acreage wanted.

Radishes, Peas, Oat, Wheat, Barley, Triticale

Michael R. 541-928-1923 michael@corvallisfs.com
Ed S. 503-580-8950 ed@baileysseed.com
Troy R. 503-362-9700 trodowski@baileysseed.com
Troy R. 503-362-9700 troy@baileysseed.com
Terry R. 503-278-2912 tross@integratedseed.com
Ken P. 503-932-8165 kpietrok@integratedseed.com
Jim P. 503-580-9425 jparsons@integratedseed.com
Frank P. 541-570-9579 fprantl@integratedseed.com

564 Farms

564 Farms

564 Farms

564 Farms

564 Farms

564 Farms

564 Farms

564 Farms

FarmSeller FARMSELLER.COM Find the land, farms, and ranches you're looking for

DIRECTORY OF PREMIUM AGENCY MEMBERS

 Brook Havens Cascade Sotheby's International Realty 541-604-0788	 Pam Mayo-Phillips Cascade Sotheby's International Realty 541-480-1513	 Linda Long Crater Lake Realty Chiloquin, OR 541-783-2759	 Jerry Franklin Eastern Oregon Realty John Day, OR 541-575-2121
 Curt Blackburn Jett Blackburn Real Estate Burns, OR 541-573-7206	 Tim Cobb Farmland Company Spokane, WA 509-624-4408	 Robert Bacon Fischer Nicholso Realty Klamath, OR 541-545-1510	 Stacey Moyles Century 21 Showcase Realtors, Inc. Klamath Falls, OR 541-882-2121
 Lisa Johnson Horsepower Real Estate Junction City, OR 541-510-4601	 Julie Mansfield-Smith Mossy Oak Properties Cupper Creek Land Company Kimberly, OR 541-519-6891	 John Lee Lee Real Estate Aumsville, OR 503-245-9090	 Paul Terjeson Oregon Farm Brokers Corvallis, OR 503-999-6777
 Steve Helms Keller Williams Farm & Ranch Albany, OR 541-979-0118	 Curtis Hitchcock Knipe Land Company Boise, ID 208-866-2825	 Janey Knipe Knipe Land Company Boise, ID 208-345-3163	 John Knipe Knipe Land Company Boise, ID 208-345-3163
 Tom Gill Knipe Land Company Mountain Home, ID 208-860-0776	 Jake Polvi POLVI Bend, OR 541-410-3050	 John Collins Ranch-N-Home Realty La Grande, OR 541-963-5450	 Judy Willis Real Estate Associates Joseph, OR 541-432-4060
 Ken Wick Real Estate Associates Joseph, OR 541-432-4060	 Mark Jones Robert Jones Realty Twin Falls, ID 208-733-0404	 Kirk Makin Ruby Peak Realty Joseph, OR 541-432-3131	 Claressa O'Connor Timberline Realty Joseph, OR 541-432-1234
 Jim Whitney Whitney Land Company Pendleton, OR 541-278-4444	 Todd Longgood Whitney Land Company Pendleton, OR 541-278-4444	 Robert Carnahan Artisan Real Estate Associates Dufur, OR 503-313-0419	 Paul Bottari Bottari & Associates Realty Inc. Wells, NV 775-752-3040

IDAHO

BOISE KNIPE LAND 208-345-3163
POCATELLO INTERMOUNTAIN LAND EXCHANGE, INC. 208-232-8306
STAR FLINDERS REALTY & EXCHANGE 208-334-3840
TWIN FALLS ROBERT JONES REALTY INC. 208-733-0404

MONTANA

BILLINGS ROCKY MTN. RANCH REAL ESTATE 406-259-6666

NEVADA

WELLS BOTTARI & ASSOCIATES REALTY INC. 775-752-3040

OREGON

ALBANY KELLER WILLIAMS FARM & RANCH 541-979-0118
AUMSVILLE LEE REAL ESTATE 503-245-9090
BAKER CITY AGRILANDS REAL ESTATE 541-853-1212
INTERMOUNTAIN REALTY 541-523-4434
BEND CASCADE SOTHEBY'S INTERNATIONAL REALTY (PAM MAYO AND BROOK HAVENS) 541-923-1376
COLDWELL BANKER BAIN 541-280-4372
FAY RANCHES 541-419-0770
POLVI 541-410-3050
BONANZA FISHER NICHOLSON REALTY, LLC 541-545-1510
BURNS JETT BLACKBURN REAL ESTATE 541-573-7206
CHILOQUIN CRATER LAKE REALTY 541-783-2759
CORVALLIS OREGON FARM BROKERS 503-999-6777
DAYVILLE DUKE WARNER REALTY 541-987-2363
DUFUR ARTISAN REAL ESTATE ASSOCIATES 503-313-0419
JEFFERSON TERI MCKENZIE REAL ESTATE 503-302-9901
JOHN DAY EASTERN OREGON REALTY 541-575-2121
JOSEPH REAL ESTATE ASSOCIATES 541-432-4060
TIMBERLINE REALTY 541-432-1234
RUBY PEAK REALTY 541-432-3131
JUNCTION CITY HORSEPOWER REAL ESTATE 541-510-4601
KIMBERLY MOSSY OAK PROPERTIES CUPPER CREEK LAND COMPANY 541-519-6891
KLAMATH FALLS CENTURY 21 SHOWCASE REALTORS, INC. 541-882-2121
LA GRANDE RANCH-N-HOME REALTY 541-963-5450
LAKEVIEW HIGH COUNTRY REAL ESTATE 541-417-0250
MEDICAL SPRINGS AGRILANDS REAL ESTATE 541-853-1212
NORTH BEND CADWELL REALTY GROUP 541-740-9854
RE/MAX SOUTH COAST 541-290-1850
ONTARIO TOM PHILLIPS AGENCY 541-889-8401
PENDLETON WHITNEY LAND CO. 541-278-4444
SALEM AGRI-BUSINESS REAL ESTATE 503-371-6409
WILSONVILLE WOLF PROPERTIES NW 503-682-1789

TEXAS

DIMITT SCOTT LAND CO. 800-933-9698

WASHINGTON

BURLINGTON RE/MAX TERRITORY NW 360-755-9494
CHEHALIS CENTURY 21 LUND REALTORS 360-748-8619
SPOKANE FARMLAND COMPANY 509-624-4408
TOLEDO RE/MAX PREMIER GROUP 360-520-4810