

WE COVER A LOT OF GROUND!

Let us deliver your message to the West's Ag Audience, wherever they are.

- Newspaper
- E-Editions
- Mobile
- Websites
- Flyers
- Custom Publications

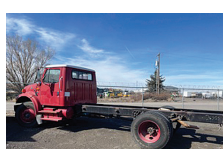
Call us today to see how we can help your business grow.



Capital Press
EMPOWERING PRODUCERS OF FOOD & FIBER

800-882-6789
CapitalPress.com

210 Trucks



1996 IHC 4900 cab and chassis. DT466 Diesel, Allison 6 SPEED Automatic, PTO capable, PS, AC, CC, Retarder. Will take a 16ft. bed. Double frame. 33,000GVW. Near new 11/22.5 radials. One owner, well maintained former State Forestry truck. Bed and work ready, \$13,900. Located in Twin Falls ID. Call 208-613-0050



1997 Ford 2000 gallon water truck. 8.3 Cummins motor, Allison transmission, AC, 2 fronts, 2 rears, 1 side spray. Like new condition, \$30,000. Atwater, CA. 209-604-1342



2010 Mitsubishi Fuso roofing or grain truck. Dump bed with 20ft scissor lift. Swing out tailgate and 4ft. sides. 7.5L Turbo Diesel, 274HP. Allison 6 speed automatic. PS, AC, CC. 33,000GVW. Double ram hoist with rear stabilizer outriggers. Spotlessly clean truck that shows very little use, \$29,900. Located in Twin Falls ID. Call 208-613-0050



1997 IHC 4900 with 12ft. 7 to 8 yard dump bed with trench gate. DT466 diesel with Allison 6 speed automatic with retarder. PS, AC, CC. Near new 22.5 radials. Very clean and well maintained truck from a State DOT. Work ready, \$18,900. Located in Twin Falls ID. Call 208-613-0050



2005 IHC 5500i with 15 yard dump bed. Barrel bottom with Hi-Lift tailgate. Cummins ISX, 435HP. Jake brake. Fuller 13 speed. 66,000GVW. Hendrickson spring rears. Near new radial tires. PS, AC, CC, PW. Clean and well maintained truck from a State DOT. Work ready! \$44,900. Located in Twin Falls ID. Call 208-613-0050



2002 International 4900 Firetruck \$26,500
4x2 DT 466 Diesel. Retarder. 6 speed Allison auto. Very good tires. 8,317 hours. Mileage on the truck is 248,327 miles. Always garaged. Runs and drives like new. PS, AC, CC. Poly water tank gallon is 2,635G. Foam system with 30G foam tank. 37HP Darley. Main pump and HP AUXILIARY pump. 1.5" + 1" discharges. Deck (gun) monitor. 300-foot hose. Near Reno, NV. Kevin: 360-852-7133

210 Trucks



Like NEW Dodge HD 3500 Flat bed, 6.7L Cummins. 4WD NO bells/whistles. 21K miles. 18MPG. 6 speed manual. Lots of extras added. \$51K. Kettle Falls, WA. mikes8262@gmail.com



1966 Ford F-600 Truck with hoist. Can be used as is or salvage, \$5500 OBO Caldwell, ID. 208-989-3015



2012 Ford F-550, 6.7L, 156,000 miles, solid, strong running truck, \$29,500. Clayton WA. 509-262-8037



2007 Freightliner tandem axle dump truck with 15- 18 yard bed and STRONG ARM. MB450 HP Diesel. Eaton UL-TRASHIFT 10 speed automatic transmission. PS, AC, CC, Jake brake, SIDE LOCK REARS, load tarp, trench gate, Tuf- Trac rear suspension 425/65/22.5 fronts with 11/ 22.5 rears on Alloy wheels. Very clean and well maintained truck from California that is work ready. \$44,900. Twin Falls, ID. Call 208-613-0050



1999 IHC with Lift-All 53' Overcenter articulating double bucket man lift with material handler. DT466 diesel. Allison Automatic. PS, AC, CC. New 22.5 radials. Certified. One owner truck from a State Agency that is in near new condition. It runs, drives, and operates like new. WORK READY, \$24,900. Located in Twin Falls ID. Call 208-613-0050

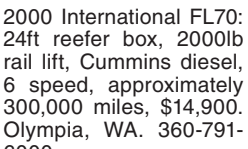


2001 Freightliner tandem axle dump truck. 16 yard round bottom bed with HiLift tailgate and load tarp. CAT C12 Diesel 410HP. RTLO 13 SPEED. Jake brake. PS, AC, CC. Hendrickson rears. 70% 11/22.5 radials. 170,000 ACTUAL MILES. Very clean one owner former Municipal truck that has been well maintained and is work ready, \$42,000. Located in Twin Falls ID. Call 208-613-0050

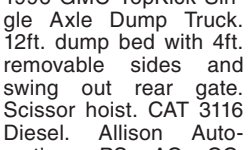


1995 Ford L8000 tandem dump truck with Ditchmaster 300 ditch cleaning auger with conveyor loading. 14Ft. bed. Cummins 8.3 Diesel. Allison Automatic. PS, AC. 62,000 ACTUAL MILES. 60% 11/22.5 radials. NO RUST! Very clean and well maintained machine from a Public Utility CO. Runs drives and operates like new, \$34,900. Located in Twin Falls ID. Call 208-613-005

210 Trucks



2000 International FL70: 24ft reefer box, 2000lb rail lift, Cummins diesel, 6 speed, approximately 300,000 miles, \$14,900. Olympia, WA. 360-791-6000



1996 GMC TopKick Single Axle Dump Truck. 12ft. dump bed with 4ft. removable sides and swing out rear gate. Scissor hoist. CAT 3116 Diesel. Allison Automatic. PS, AC, CC. 26,000GVW. Very clean well maintained truck from a California State agency. Runs, drives, and operates well. WORK READY. \$17,900 Located in Twin Falls, ID. Call 208-613-0050



2006 Freightliner 33 pass bus with 9,000 ACTUAL MILES. 5.9L ISB Cummins Diesel. Allison 6 speed. Automatic. Front and rear AC. Wheel Chair Lift. 22.5 radial tires. Former State University bus that has been well maintained and is in like new condition. \$14,900. Located in Twin Falls ID. Call 208-613-0050



2001 Freightliner Classic tandem axle dump truck with 18 yard bed with STRONG ARM. Cummins Diesel, 325 HP. 10 speed. PS, AC, Jake brake. 70% radials on 22.5 Alloy wheels. 180K. ACTUAL MILES. Exceptionally clean and well maintained truck that has been well maintained. WORK READY. RUST FREE. \$44,900. Located in Twin Falls ID. 208-613-0050

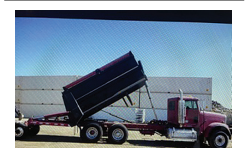
210 Trucks



1982 Ford LN9000, Cummins, 13 speed, 21ft silage and manure box, \$7000. Buhl, ID. 208-280-6595



2007 IHC 4400 with 12K. Lb. folding crane 25ft. reach and Hydraulic cable winch and outriggers. 15ft. flatbed with tool boxes and torch compartment and 3500lb. lift gate. DT466 Diesel with Fuller 10 speed transmission. Low Miles PS, AC, CC. 80% 22.5 radial tires. Spotlessly clean and well maintained truck from the California DOT. RUST FREE! Runs, drives and operates like new. WORK READY. \$29,900. Located in Twin Falls ID. Call 208-613-0050

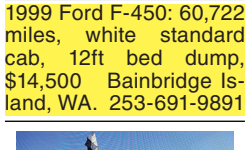


2001 Freightliner Classic tandem axle dump truck with 18 yard bed with STRONG ARM. Cummins Diesel, 325 HP. 10 speed. PS, AC, Jake brake. 70% radials on 22.5 Alloy wheels. 180K. ACTUAL MILES. Exceptionally clean and well maintained truck that has been well maintained. WORK READY. RUST FREE. \$44,900. Located in Twin Falls ID. 208-613-0050

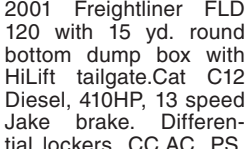
210 Trucks



1976 Mack 132,378 miles, high side dump, good tires, new clutch, \$14,900. Bainbridge Island, WA. 253-691-9891



1999 Ford F-450: 60,722 miles, white standard cab, 12ft bed dump, \$14,500 Bainbridge Island, WA. 253-691-9891



2001 Freightliner FLD 120 with 15 yd. round bottom dump box with HiLift tailgate. Cat C12 Diesel, 410HP, 13 speed Jake brake. Differential lockers. CC, AC, PS. 54K GVW. 60% 11/22.5 radials. 170K. ACTUAL MILES. RUST FREE. One owner Municipal truck that has been well maintained and runs drives and operates like new. WORK READY! \$44,000. Located in Twin Falls Id. Call 208-613-0050 Twin Falls, ID. (208)613-0050



2020 Dodge Ram 3500, Fully Loaded Laramie, Automatic, \$72,000 Miles, Bradford Flatbed, Stock Wheels, Goose Neck, Tool Boxes, Asking \$79,950.00 Call Pepe: 503-544-3232; Call Pat: 503-407-9062 Sandy, OR. (503)668-5024

Buying or Selling
Capital Press is here to help you!
1-800-882-6789 or FAX 503-370-4383
CapitalPress.com

LOVELL Truck Sales
53rd Anniversary

2006 International 4300 24' box truck DT-466 220 hp, allison auto, 254"wb, rail gate, non CDL. \$24,500

(2) 2015 Peterbilt 579 63" sleeper truck 455hp paccar, fuller 10spd, 3.42 ratio, air ride, 237" wb, auto chains, very nice truck, ... \$65,500 each

New Arrivals:
(3) 2015 Freightliner single axle DD13, 10spd, air ride, low miles.
(2) 2014 Freightliner reefer box truck Cummins, auto, lift gate.

1-800-451-0012 (503) 266-5886 FAX (503) 266-6903

LOVELLTRUCKSALES.COM
LovellTruck@canby.com
680 SW 1st Ave (Hwy 99 E) Canby, OR

R & G MACHINING AND ENGINE PARTS
COMPLETE DIESEL MACHINE SHOP AND TRUCK REPAIR
MULINO, OREGON • SHOP: 503-829-6038 • NATIONWIDE: 1-800-823-6038
We Absolutely, Positively Have The Best Remanufactured Engines Available Anywhere!
Huge Inventory • Expert Technical Assistance

ENGINES INSTALLED PRICING	REBUILT DIESEL L/B ENGINES
Incidentals extra. Exchange 100,000 mile warranty when we install! Depending on applications:	CUMMINS
GM 6.2 - 6.5 T, installed.....\$7,495	3.9-4BT.....\$4,650 Starting at.....\$5,995
Ford 6.4 P/S, installed.....\$12,750	5.9 '88-'02.....\$4,850
Ford 94-03 7.3 P/S, installed.....\$8,600	5.9 '03 & up.....\$5,150
Cummins 88-02 5.9, installed.....\$8,400	6.7 C/R.....\$5,450
Cummins 03 & Up, 5.9 C/R, installed.....\$9,450	FORD
Cummins 6.7, installed.....\$10,250	6.0 P/S.....\$5,845 Starting at.....\$4,495
• We grind and weld crankshafts and camshafts	6.4 P/S.....\$6,545
• We weld blocks & cylinder heads	6.7 P/S.....\$7,650
• Exchange connecting rods or connecting rod kits	6.9-7.3 IDI.....\$5,150
• Diesel or Gas engine kits	7.3 P/S.....\$5,150
• Cylinder head or block O-ringing	GM
All Years & Models: Turbos, Injectors, High Pressure Oil Pumps, Fuel Injection Pumps, Oil Coolers, Computers - Ford, GM Chrysler	6.6 Duramax.....\$6,550
	6.2-6.5.....\$4,895
	JOHN DEERE & IH
	Starting at.....\$5,995
	KOBELCO, KOMATSU, HITACHI
	Starting at.....\$5,995
	CATERPILLAR & HYUNDAI
	Starting at.....\$5,995
	PERKINS & ISUZU
	Starting at.....\$5,995
	MITSUBISHI & NISSAN
	Starting at.....\$5,995
	YANMAR & KUBOTA
	Starting at.....\$4,495
	BOBCAT & SHIBAURA
	Starting at.....\$3,995
	DOOSAN & TAKEUCHI
	Starting at.....\$5,995
	DEUTZ
	Starting at.....\$9,995
	HINO & IVECO
	Starting at.....\$5,995
	WE HAVE A LARGE INVENTORY OF REBUILT OR REMANUFACTURED CYLINDER HEADS, CONNECTING RODS, CRANKSHAFTS, AND BLOCKS ON AN EXCHANGE BASIS FOR DIESEL AND GAS ENGINES.
	Call on other gas or diesel engines. We are a major rebuilder on all diesel brands. All work done in house!
	WANTED
	Cummins 6.7 and 5.9 - Engine Cores
	R&G Machining 503-829-6038

IN BUSINESS SINCE 1975.

OVER 250 ENGINES & 450 CYLINDER HEADS IN STOCK!
We have a complete line of import diesels and obsolete diesels for your mini excavators or skidsteers. We work and repair all brands!

NEED ENGINE PARTS, GAS OR DIESEL - CHECK IT OUT:
WWW.EBAY.COM/STR/GRUMPSPERFORMANCECENTER
GRUMPSPERFORMANCE@GMAIL.COM

A name you can count on.

Benefit today from the strength of Capital Press newspaper and multimedia products and services.

- Newspaper
- E-Editions
- Websites
- Mobile
- Flyers
- Custom Publications

1-800-882-6789 • FAX 503-370-4383 • www.CapitalPress.com

POWER FLEET & COMMERCIAL SALES
MEDIUM DUTY DEALER

2021 Chevy Med Duty 5500 2WD Service Body
Stock #24237

Call for your business preferred price!

Jim Church 503-910-7784
Delana Johnson 503-769-7100
Brian Heinrich 503-504-3629
Ryan Church 503-877-7102

www.POWERAUTOGROUP.COM
503-769-7100