



Access Capital Press any where, any way you want it.

Print
Capital Press AG Weekly is written for the Northwest region's Ag Community

E-edition
An exact pixel copy of Capital Press. Easy to use - easy to share articles.

E-mail Newsletters
The latest top ag stories weekly.

Website
CapitalPress.com news and ads updated 5 days a week.



SUBSCRIBE TODAY!

869 Livestock Equip. & Supplies

Hay Bonnet Horse Feeders In Stock: NW Farm Supply, Hermiston, OR. 800-801-5650 or Mike 541-561-6047



8ft x 16' Heavy Duty Cattle Guard, constructed from 16" I-Beam and RxB iron, removable grates, removable wings, \$3950 Prineville, OR. Contact Logan 541-420-6652



New IA Portable Hay Feeder:
• 8 hole wheels
• Swing up tongue
• Inner bunk
• 35 stations
\$6,395
2 or more \$6,195 each.

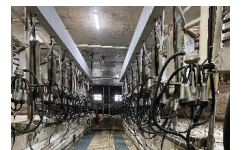
MTC Sales
Bend, OR.
Scott: 541-548-7185
Visit: www.mtcsales.net
Partner Dealers
Aleman Equipment
Dutchess, Alberta, CAN.
Jerry: 403-793-7341
Equipment Finders
Twin Falls, ID
Dave: 208-731-4040
Vista Equipment
Hazen, NV.
Jerry: 775-741-0688

872 Dairy Eq. & Supplies

Mueller 6000 gallon milk tank, \$30,000 Lynden, WA. 360-815-0218



4,000 Gallon DeLaval. In excellent Condition, \$15,000. Elk, WA. 509-991-1333



Rapid Exit Herringbone. Complete with DeLaval automatic take offs. Working condition. Includes milk pumps and pipelines. Make offer. Elk, WA. 509-991-1333

Kiln Dried Shavings: Smaller truck loads now available. Hogfuel also available. Call for details. Forest Grove, OR. 503-849-0216

878 Generators



1996 Spectrum 350 KW GenSet. Detroit 8V92, 568 HP. 260 ACTUAL HOURS. 480v, 240v, 120v, 1 and 3 PH. Mounted on an HD tandem axle trailer with 350 gal. fuel tank. New 14 ply radial tires. Former City unit from Southern Arizona. Like New Cond. WORK READY! \$25,000 Located in Twin Falls ID. Call 208-613-0050. Twin Falls, ID. (208)613-0050



GENERATORS: Used, low hour takeouts, 20KW to 2000kW, diesel, propane, & natural gas. Cooperstown, ND. We ship nationwide. 701-371-9526 or 701-367-4305 abrahamindustrial.com



640KW Mobile Genset: Two 320KW generators operated single or in tandem. Switch gears. All modern digital controls. Silenced exhaust. 1000 gallon fuel. 40ft. Utility van enclosure. 50 hours and 54 hours on the generators. 8 near new 11/22.5 radials. Former Municipal in new condition throughout, \$49,900. Located in Twin Falls ID. Call 208-613-0050

Don't look any further! Sell or buy what you need in Capital Press!
1-800-882-6789
FAX (503) 370-4383
AD DEADLINES:
Classified Display Ads, Weds. @ 10AM
Classified Line Ads, Weds. @ Noon
CapitalPress.com

887 Irrigation Equip.

PASSION IN IRRIGATION

T-L Pivots
Drip Tape & Supplies
Drip Equipment
Drip Tape Recycling

AquaTech
IRRIGATION SUPPLY LLC
PASCO, WA

509-547-3800

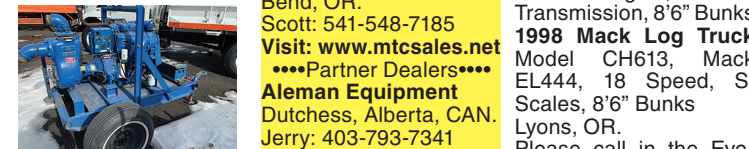
887 Irrigation Equip.

NEW!
10" PVC Pipe 1300' Class 125 Gasketed, \$15.96/ft. 6" PVC Pipe 3500' class 125 Gasketed \$6.30/ft. AquaTech Irrigation Supply. Pasco, WA. 509-619-9256

100HP Westinghouse 12ft draw irrigation pump, includes start up equipment, \$3900 OBO. Bellingham, WA. 360-734-2222



Used T&L Irrigation Circle, includes (11) 126ft tower spans with planetary gears, pump and pivot point. Used thru 2021 Season. \$11000 OBO Moses Lake, WA. Call 509-669-0054



NEW IA Pivot Track Closer. Heavy Duty with adjustable cone discs. From 60" to 12" closing width. Hydraulic Depth Control water fill roller packer, \$5,495.

MTC Sales
Bend, OR.
Scott: 541-548-7185
Visit: www.mtcsales.net
Partner Dealers
Aleman Equipment
Dutchess, Alberta, CAN.
Jerry: 403-793-7341
Equipment Finders
Twin Falls, ID
Dave: 208-731-4040
Vista Equipment
Hazen, NV.
Jerry: 775-741-0688



REFURBISHED PUMPS AT A FRACTION OF NEW.
(6) Cornell Marathon Electric, 15 to 75hp, 1760-3500 RPM's; (3) Berkeley Baldor Industrial Motor, 7.5 to 15hp, 3450 RPM's. Meridian, ID. 208-888-1376

CAPITAL PRESS CLASSIFIEDS
1-800-882-6789
CapitalPress.com

Call Us Today for Bulk Pricing!
360.393.4923
Lynden, WA
watertecnca.com

Frost Protection

HPS Pipe & Supply

Authorized Factory Dealer of **Orchard-Rite** Wind Machines

598 Baseline
Cornelius, OR
Office: 503-357-4217
info@hpspipe.com

WATER MASTER SERIES AND EVERGREEN

SUPERIOR SERVICE & DESIGN

- All your needs for irrigation parts service
- We build custom equipment for your special needs
- Hose replacements & fusion repairs
- Transport Tanks • Rental Returns & Used Equipment
- Structural and steel available for purchase

VALLEY WORKMAN

Truck Equipment

- Full Service
- Alterations
- Dump Bodies • Hoists
- Farmbeds • Flatbeds

VALLEY FAB CORP

10910 Portland Rd. NE • Brooks, OR
Call: 503-792-3739 • Fax: 503-792-3738

ERNST
Irrigation • Electrical • Tractor

"We understand your water needs. Let our experienced staff assist you with all your water quality and quantity needs."

PRODUCTS:

- T and C 1/2" - 6"
- Filtration
- Valves
- Sprinklers
- Water Meters
- Chemical Injection
- Bandit Clamps
- Aluminum Irrigation Fittings & Pipe 2" - 10"
- Wheelines & Wheeline Fittings
- Hard Hose Travelers
- Linears
- Water Pumps
- Steel Pipe & Fittings 1/2" - 12"
- PVC Fittings & Pipe 1/2" - 18"
- Low Volume/Micro Irrigation Drip Hose 1/2" - 2"
- Angus Drag Hose 2 1/2" - 5" Suction & Discharge Hose
- T-Bolt Clamps
- Motor Bearings
- Pump Packing
- Controllers
- Fish Friendly Screens
- Victaulic Fittings
- Camlock Fittings
- Hard Hose 2" - 5 1/2"
- K-Line POD Irrigation
- Manure Pumps

SERVICES:

Design & Consultation • Pumps & Panels, including Variable Frequency Drives • Traveler Repair, all makes & models • Field Fabrication • Big Gun Rebuilding • Water Testing / Flow & Quality

www.ErnstIrrigation.com

20179 Main St., St. Paul, OR 97137
(503) 633-1111

899 Heavy & Indust. Eq.



2009 CimLine CRACK PATCHER. Tandem axle. 230 gallon, 18ft. heated hose and wand. Isuzu 3 cylinder diesel. Near new tires. 1300 ACTUAL Hours. Former Southern California County machine that has been well maintained and is work ready, \$18,900. Located in Twin Falls ID. Call 208-613-0050



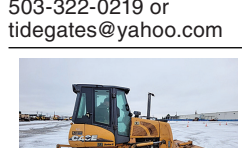
2017 Prime Tech 175 forestry mulcher: 1100 hours, \$175,000. Jefferison, OR. 503-932-1149, 503-930-7834



REPLACEMENT DECAL SETS
Construction, Forestry & Ag Equipment. Fast, Knowledgeable, Reliable Service. 215-536-5339 email: info@CustomServicesCompany.com
Thousands of sets, Old & New, in our digital inventory.
www.QuipCal.com



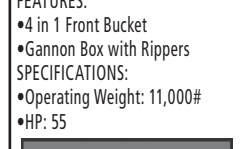
EX200LC-3 Hitachi Excavator with thumb, 3 buckets, 4000 hours, \$60,000. Brookings, OR. 541-661-0008



NWTL Inc Heavy Haul & Trucking
Travis Dispatch 503-849-6867
Services:
• Multi-Axle Lowboy
• Heavy Haul
• Heavy Equipment Recovery
• Equipment Transport
• Agriculture Equipment
• Construction Equipment
• Forestry Equipment
• All Lower 48 States
Hourly and Mileage Rates Available, Sandy, OR.



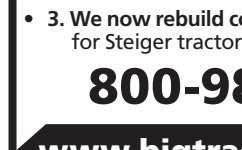
Morooka MST2000 Track Carrier/ Dumper. Rumble Gate. Approximately 6-7 yard Capacity. \$28,995 Or Trade for CAT with winch and canopy. Nehalem, OR. 503-322-0219 or tidegates@yahoo.com



2016 Hyster H230HD. 12,500 hours, 8ft. forks, hydraulic fork positioners. Side Shift, 2 stage 212" upright. Cummins power, \$45,000. Gaston, OR. 503-789-3726



Case 850K Dozer, 6 way Blade, enclosed ROPS, Multi Shank Ripper, 4840 Hours, Asking \$69,950.00. Sandy, OR. Call Pepe: 503-544-3232; Call Pat: 503-407-9062



Call Cameron Noble or Eric Hunt
CENTRAL POINT, OR
855-423-1200
www.amtractor.com

902 Farm Equip. Parts

BIG TRACTOR PARTS, INC.
~ GEARED FOR THE FUTURE ~

STEIGER TRACTOR SPECIALIST

- 1. We are your source for new & used Steiger drivetrain parts Series 1-9300 Series.
- 2. We rebuild Spicer manual transmissions, Fugi power shift transmissions, dropboxes & axle with ONE YEAR WARRANTY!
- 3. We now rebuild computer control boxes for Steiger tractors 1982-1999.

800-982-1769
www.bigtractorparts.com

907 Nursery Equip. & Supplies

USED NURSERY CONTAINERS:
Used, but reusable nursery containers. All sizes. Inventory changes daily. Call for current availability and prices. Sawyer Farms, Scio OR. 503-769-3417, juddsfarm@wvi.com (also wanted: used containers)



Nursery stakes: 1/4"x6" on metal pallets. Used 4 years. Great condition, \$1/ stake. Lafayette, OR. 503-437-4833

899 Heavy & Indust. Eq.



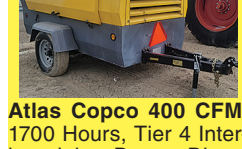
Atlas Copco 400 CFM, 1700 Hours, Tier 4 Interim, John Deere Diesel Engine. \$17,500. Nyssa, OR. 833-372-4020



Towable Diesel Air Compressors. Many 185s and (4) HP375. Hours range from 130 to 2400. Prices from \$9,500 to \$27,500. Overtime Equipment, LLC. 21338 Hwy 30, Filer ID. 83328. 208-734-3434



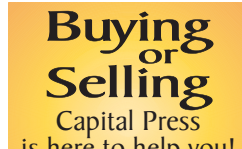
2019 John Deere 835 Center Pivot MoCo, new cutter Bar 11'6" cut, chevron rollers, small 1000 PTO. Ready to work, \$22500 OBO. Yamhill, OR. 503- 537-4821



Freeman 370 Baler: Like new, 27,000 bales, recent \$8,000 overhaul, new paint, hydro. \$20,000 OBO. Junction City, OR. 541-998-2429



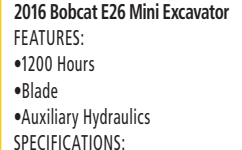
Hay squeeze built on a 2001 4400 DT466 International truck. New squeeze head, hydraulic system, new power steering pump and gear box. New air seats, LED work lights. Lifts 176", 98"WB, 19,740lb. \$95,000 Paragonah, UT. Call 435-590-5446



Buying or Selling
Capital Press is here to help you!
1-800-882-6789
or **FAX 503-370-4383**
CapitalPress.com



CASE INDUSTRIAL PARTS
We sell genuine, after market, and used CASE parts at discount prices nationwide.
Call For Free Catalog.
CENTRAL EQUIPMENT
AFTER MARKET & USED PARTS
Medford, OR
(888) 593-8749



1993 John Deere 210C Skip Loader - \$17,500
FEATURES:
• 4 in 1 Front Bucket
• Gannon Box with Rippers
SPECIFICATIONS:
• Operating Weight: 11,000#
• HP: 55



2016 Bobcat E26 Mini Excavator
FEATURES:
• 1200 Hours
• Blade
• Auxiliary Hydraulics
SPECIFICATIONS:
• Operating Weight: 5666 lbs.
• HP: 25



Capital Press Ag Weekly
It works!

It's a small world!
"A student in Vancouver, BC bought my Leyland 272 tractor to ship to his Dad in South Africa! His Dad already had one and wanted another, so he purchased the one I listed in Capital Press!"
Tony Windermere
Nut Grove
Chilliwack, BC

Classified Advertising Works!

Capital Press
EMPORING PRODUCERS OF FOOD & FIBER

Place your ad today!
800-882-6789
CapitalPress.com

www.GKGreenhouses.com

- GREENHOUSE KITS
- END WALL & DOOR KITS
- FANS & HEATERS
- POLY COVERS
- WIRE LOCK
- SHADE CLOTH
- GROUND COVERS
- ALL STEEL RAILS & BASE

GK MACHINE, INC * Donald Oregon * 503-678-5525