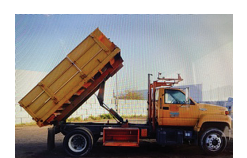


210 Trucks



1996 GMC TopKick Single Axle Dump Truck. 12ft. dump bed with 4ft. removable sides and swing out rear gate. Scissor hoist. CAT 3116 Diesel. Allison Automatic. PS, AC, CC. 26,000GVW. Very clean well maintained truck from a California State agency. Runs, drives, and operates well. WORK READY. \$17,900 Located in Twin Falls, ID. Call 208-613-0050

210 Trucks



2005 IHC Paystar 5500i tandem dump truck. 14ft. Stainless Steel dump bed with 28in. live chain floor with removable conveyor cover and regular tailgate with metered gate discharge. Cummins ISX 435HP Diesel. Eaton 13 speed. PS, AC, CC, Jake. Brand new 11/22.5 radials. Bed alone is \$70K new. One owner former State truck that is in like new condition. Well maintained! \$44,900. Located in Twin Falls ID. Call 208-613-0050

210 Trucks



1992 Ford F800 SEWER JETTER TRUCK. 2003 model Sewer Equipment of America Jetter system. 2000 gallon water tank. 43,000 ACTUAL MILES on truck. 6 cylinder Diesel. Allison transmission. Near new radials. Exceptionally clean one owner former City truck that runs drives and operate like new, \$12,900. Located in Twin Falls ID. Call 208-613-0050

210 Trucks



2004 IHC 7400 Digger Derrick with Altec D3050 TR derrick. 50ft. reach. 30,000Lbs. lift. 4 outriggers. 2 tool circuits, Upper and lower controls. 20,000LB. front winch with Capstan. Near new 11/22.5 radials. DT530 Diesel with Allison Automatic trans. PS, AC, CC. Side lock rear differentials. 98,000 ACTUAL HOURS. One owner truck from a large Electrical Utility. Everything on the truck works properly. Clean, well maintained and work ready, \$29,900. Located in Twin Falls ID. Call 208-613-0050

210 Trucks



2001 IHC 2674 tandem axle dump truck. 15 yard. Cummins N14 Diesel. 410HP. Allison 4560, 6 speed Automatic. PS, AC, CC, PW, Jake brake. Side locker rears. 18K front axle. Hendrickson spring rears. 120K ACTUAL MILES. 4400 hours. Former State DOT truck. Well maintained, very clean and work ready, \$44,000. Located in Twin Falls ID. Call 208-613-0050



2007 IHC 4400 with 12K. Lb. folding crane 25ft. reach and Hydraulic cable winch and outriggers. 15ft. flatbed with tool boxes and torch compartment and 3500lb. lift gate. DT466 Diesel with Fuller 10 speed transmission. Low Miles PS, AC, CC. 80% 22.5 radial tires. Spotlessly clean and well maintained truck from the California DOT. RUST FREE! Runs, drives and operates like new. WORK READY. \$29,900. Located in Twin Falls ID. Call 208-613-0050



2007 IHC 7400 single axle dump truck. 7 to 8 yard bed. DT570 Diesel. 300HP, plumbed for a pup. Fuller 10 speed transmission. 37,000GVW. 75% 11/22.5 radials. PS, AC, CC. Very clean and well maintained truck from the California DOT. 198,000 miles. NO RUST! WORK READY. \$27,900. Located in Twin Falls ID. Call 208-613-0050



1996 GMC TOPKICK: single axle flat bed dump truck. 12ft bed. 26,000GVW. NO CDL. 3116 CAT Diesel. Allison Automatic. PS, AC. 60,000 ACTUAL MILES. Pintle hitch. Former California DOT truck that has been well maintained and is very clean. NO RUST! WORK READY. \$18,900. Located in Twin Falls ID. Call 208-613-0050



1995 GMC TopKick with Copma 12000LB. knuckle crane with 26FT. reach, Bobcat 250D welder and 2500LB. liftgate. 14FT. bed with compartments and auger head with 10" auger. CAT 6 cylinder Diesel. Allison 6 speed. transmission. PS, AC. 80% 11/22.5 radials. Very clean and well maintained truck from the California DOT. Work ready, \$19,900. Located in Twin Falls ID. Call 208-613-0050



1996 IHC 4900 cab and chassis. DT466 Diesel, Allison 6 SPEED Automatic. PTO capable. PS, AC, CC, Retarder. Will take a 16ft. bed. Double frame. 33,000GVW. Near new 11/22.5 radial tires. One owner, well maintained former State Forestry truck. Bed and work ready, \$13,900. Located in Twin Falls ID. Call 208-613-0050



WANTED: Older Kenworth or Peterbilt Tractor in nice condition to be used for farm truck. Shelbyville, IL. 217-273-9111



2006 Freightliner 33 pass bus with 9,000 ACTUAL MILES. 5.9L ISB Cummins Diesel. Allison 6 speed. Automatic. Front and rear AC. Wheel Chair Lift. 22.5 radial tires. Former State University bus that has been well maintained and is in like new condition. \$14,900. Located in Twin Falls ID. Call 208-613-0050



2006 GMC C8500 Single Axle dump truck. 7-8 yard bed. Electric load tarp. 70,000 ACTUAL MILES. CAT C7 Diesel with 330 HP. Allison 6 speed automatic. PS, AC, CC. Near new 22.5 radials. 33,000 GVW. One owner, well maintained California County truck that is RUST FREE and in excellent condition. Runs, drives, and operates like new. \$28,900. Located in Twin Falls, ID. Call 208-613-0050

IT'S SO EASY TO PLACE CAPITAL PRESS CLASSIFIED ADS... PHONE TOLL FREE 1-800-882-6789

PLACE LINE CLASSIFIED ADS TOLL-FREE FROM ANYWHERE! 1-800-882-6789

WANTED

A picture is worth a 1,000 words

Add a full color photo to your print and online ad.

Capital Press
800-882-6789
CapitalPress.com

210 Trucks

KENWORTH T800 4-AXLE CHASSIS

6 TRUCKS @ \$80,000 California Certified for Emissions

Cummins ISX engines, 18-spd. trans., single spd. Eaton rear-ends 4:10 or 4:11 gears w/locker, HENDRICKSON HAUL-MAX WALKING BEAM SUSP.

- #22 DR363691 2013, D46-170HP rears, 262" WB, 485hp.....\$80,000
- #27 CJ32487 2012, D46-170HP rears, 262" WB, 485hp.....\$80,000
- #33 DR363687 2013, D46-170HP rears, 262" WB, 485hp.....\$80,000
- #48 DR363689 2013, D46-170HP rears, 262" WB, 485hp.....\$80,000
- #52 DR363690 2013, D46-170HP rears, 262" WB, 485hp.....\$80,000
- #54 DR363692 2013, D46-170HP rears, 262" WB, 485hp.....\$80,000

CLEAN AND IN EXCELLENT SHAPE! MAINTENANCE RECORDS - REGULAR OIL SAMPLES

Thomas H. Ireland More info: www.irelandtrucking.com
Call Charles Ireland 541-863-1501 Myrtle Creek, OR

210 Trucks

R & G MACHINING AND ENGINE PARTS
COMPLETE DIESEL MACHINE SHOP AND TRUCK REPAIR
MULINO, OREGON • SHOP: 503-829-6038 • NATIONWIDE: 1-800-823-6038
We Absolutely, Positively Have The Best Remanufactured Engines Available Anywhere!
Huge Inventory • Expert Technical Assistance

ENGINES INSTALLED PRICING
Incidentals extra, Exchange 100,000 mile warranty when we install!
Depending on applications:

GM 6.2 - 6.5T, installed.....	\$7,495
Ford 6.4 P/S, installed.....	\$12,750
Ford 94-03 7.3 P/S, installed.....	\$6,600
Cummins 88-02 5.9, installed.....	\$8,400
Cummins 03 & Up, 5.9 C/R, installed.....	\$9,450
Cummins 6.7, installed.....	\$10,250

• We grind and weld crankshafts and camshafts
• We weld blocks & cylinder heads
• Exchange connecting rods or connecting rod kits
• Diesel or Gas engine kits
• Cylinder head or block O-ringing

All Years & Models: Turbos, Injectors, High Pressure Oil Pumps, Fuel Injection Pumps, Oil Coolers, Computers - Ford, GM Chrysler

CUMMINS 5.9 MAGNUM
\$5,995 AND CORE \$3,850

REBUILT DIESEL L/B ENGINES

CUMMINS		PERKINS & ISUZU	
3.9-4BT.....	\$4,650	Starting at.....	\$5,995
5.9 '88-'02.....	\$4,850	MITSUBISHI & NISSAN	
5.9 '03 & up.....	\$5,150	Starting at.....	\$5,995
6.7 C/R.....	\$5,450	YANMAR & KUBOTA	
		Starting at.....	\$4,495
6.0 P/S.....	\$5,845	BOBCAT & SHIBAURA	
6.4 P/S.....	\$6,545	Starting at.....	\$3,995
6.7 P/S.....	\$7,650	DOOSAN & TAKEUCHI	
6.9-7.3 ID1.....	\$5,150	Starting at.....	\$5,995
7.3 P/S.....	\$5,150	DEUTZ	
		Starting at.....	\$9,995
6.6 Duramax.....	\$6,550	HINO & IVECO	
6.2-6.5.....	\$4,895	Starting at.....	\$5,995
		JOHN DEERE & IH	
		Starting at.....	\$5,995
		KOBELCO, KOMATSU, HITACHI	
		Starting at.....	\$5,995
		CATERPILLAR & HYUNDAI	
		Starting at.....	\$5,995

We have a large inventory of rebuilt or remanufactured cylinder heads, connecting rods, crankshafts, and blocks on an exchange basis for diesel and gas engines.

Call on other gas or diesel engines. We are a major rebuilder on all diesel brands. All work done in house!

WANTED
Cummins 6.7 and 5.9 - Engine Cores
R&G Machining 503-829-6038

OVER 250 ENGINES & 450 CYLINDER HEADS IN STOCK!
We have a complete line of import diesels and obsolete diesels for your mini excavators or skidsteers. We work and repair all brands!

NEED ENGINE PARTS, GAS OR DIESEL - CHECK IT OUT:
WWW.EBAY.COM/STR/GRUMPYSPERFORMANCECENTER
GRUMPYSPERFORMANCE@GMAIL.COM

CapitalPress.com

VIEW ALL CLASSIFIED ADS ABSOLUTELY FREE!

1-800-882-6789

INSTANT EXCLUSIVE UNLIMITED

NEWSPAPER • EPAPER • MOBILE
• WEBSITE • E-MAIL UPDATES

We deliver your message to the West's Ag Audience, wherever they are!

- Newspaper
- E-Editions
- Mobile
- Websites
- Flyers
- Custom Publications

Call today to advertise.

Capital Press
EMPOWERING PRODUCERS OF FOOD & FIBER

800-882-6789
or go to
CapitalPress.com

210 Trucks

IRELAND INCORPORATED

More info: www.irelandtrucking.com
Call Charles Ireland 541-863-1501 Myrtle Creek, OR

Pro Truck!

(253) 863-8782
Cell 206-510-4780
sales@pro-truck.com

2000 Kenworth T300 Tandem axle, Day Cab Tractor Truck 164" WB, Cummins ISC Engine, 275 HP, 10-spd. transmission... \$14,950

2001 Great Dane Roll Top Trailer 2 axle, air ride susp, Aluminum floors with wood nailers, overall good condition...\$14,500

2005 Isuzu FVR Cab and Chassis 2 axle, 19 ft., 186" WB, Isuzu 6HK1x, 304 HP, 4-spd. automatic, steel frame.....\$9,950

1999 GMC 18' Flatbed Dump Truck and Forklift 242" WB, 5-spd. manual, air ride susp, steel frame, power steering, Caterpillar engine.....\$22,500

www.pro-truck.com 5284545-1

CLASS 8 TRUCKS
509-534-9088

2002 Freightliner Classic, Detroit 12.7 500hp, 15 spd., 3.90 ratio, 243" WB, pusher axle...CALL

2012 Volvo VNL780, D13, 13 spd., APU, 78" stand-up sleeper with dinette option...CALL

2004 KW T800 FB w/ hoist, CAT C12, 10 spd., double lockers 22' bed with hoist.....CALL

2012 International ProStar, 475 Hp, 13 spd., 3.55 ratio, Clean Truck!.....CALL

2006 IH Workstar, Cummins W/OH, 350 hp, Jakes, Recon 10-speed, rear locker, 21' bed and hoist, Moffet mount.....\$49,900

2003 Sterling LT9500, Cat C-12/8LL, Tuffrac susp., double lockers, double frame, CEOF 24', low miles 240,096, crane can come off...\$39,900

1995 Freightliner COE, Detroit S60, 12.7, 430 hp, 9 speed, 4.10 ratio, 200" WB, 2 line wet kit, Low Miles.

POWER FLEET & COMMERCIAL SALES
MEDIUM DUTY DEALER

Jim Church 503-910-7784
Delana Johnson 503-769-7100
Brian Heinrich 503-504-3629
Ryan Church 503-877-1102

Silverado Med Duty Trucks Ranging from 4500-6500
2020 Chevy 5500XD LCF Diesel

CHEVROLET BUSINESS ELITE
WWW.POWERAUTOGROUP.COM
503-769-7100

LOVELL Truck Sales
53rd ANNIVERSARY

2000 Ford F-750 22' flatbed Diesel 7.3 210hp, Fuller 6speed, 22' flatbed with lift gate, ps, ac, 242" wb, 163k miles...\$12,500

2) 2004 International 9200I40" sleeper trucks Cummins ISX 400 and 450hp, Fuller 10 speed, engine brake, air slide 5th wheel, dump valve, 205"wb, nice trucks with engine history..... \$25,500 each

2002 Peterbilt 3 axle daycab Cummins N-14 435hp, Fuller 10 speed, engine brake, 4-SPRING suspension, 170" c/t, 212" wheelbase, pintle hitch with air, ps, ac, cruise control, \$18500

2006 Freightliner three axle day cab cabover Series 60 14L Detroit 455hp, Fuller 10speed, 3.73 ratio, air ride, engine brake, 255" wb, 14,600lb front axle, \$19,500

1-800-451-0012 (503) 266-5886 FAX (503) 266-6903

LOVELLTRUCKSALES.COM
LovellTruck@canby.com
680 SW 1st Ave (Hwy 99 E) Canby, OR

You can benefit today from the strength of our newspaper and multimedia products and services.

Stay up to date on the latest agricultural news.

Advertise to buy or sell to our large northwest subscriber base.

Don't miss another issue!
Call 1-800-781-3214 to subscribe.

Capital Press
EMPOWERING PRODUCERS OF FOOD & FIBER

CapitalPress.com